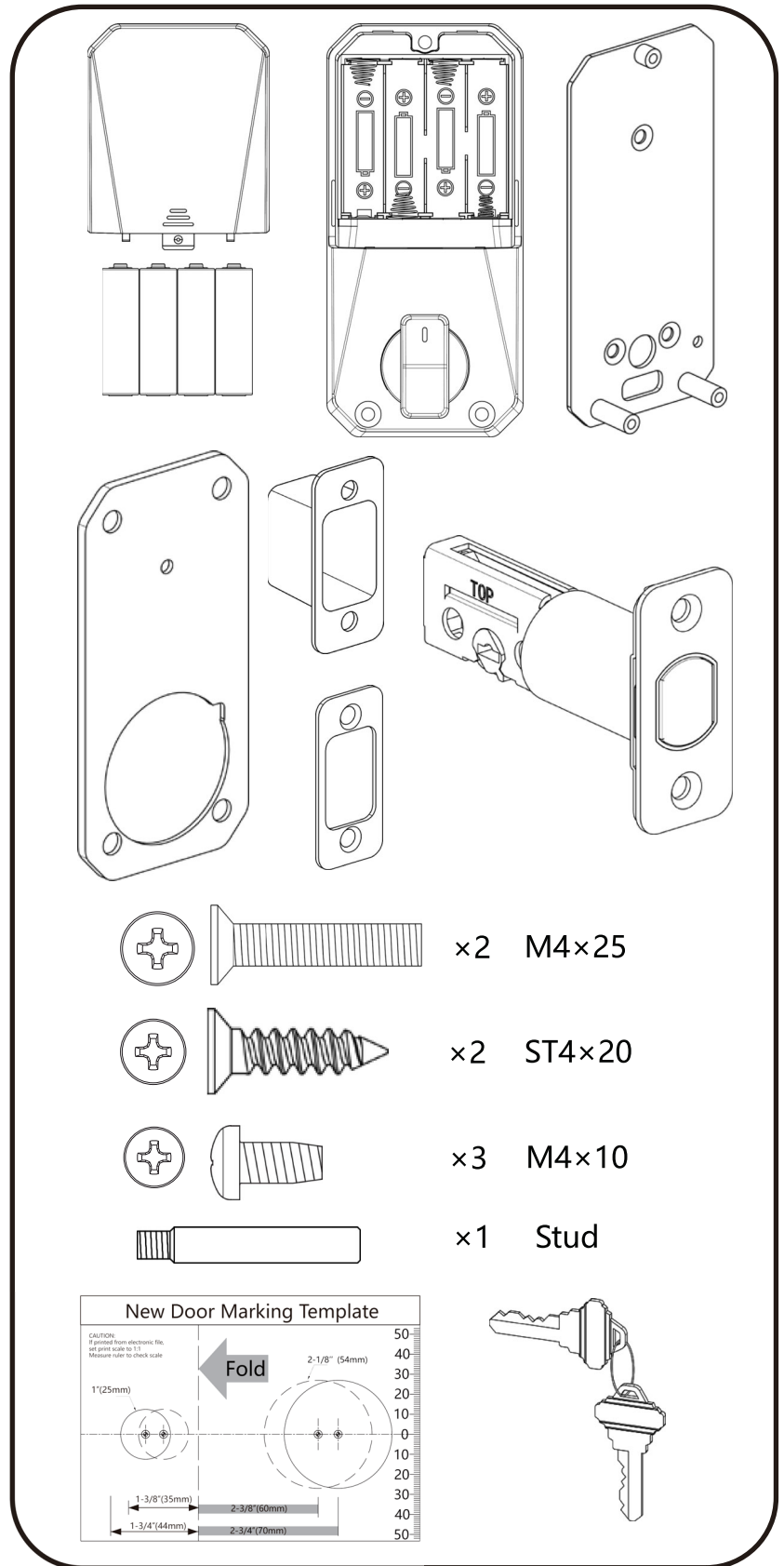
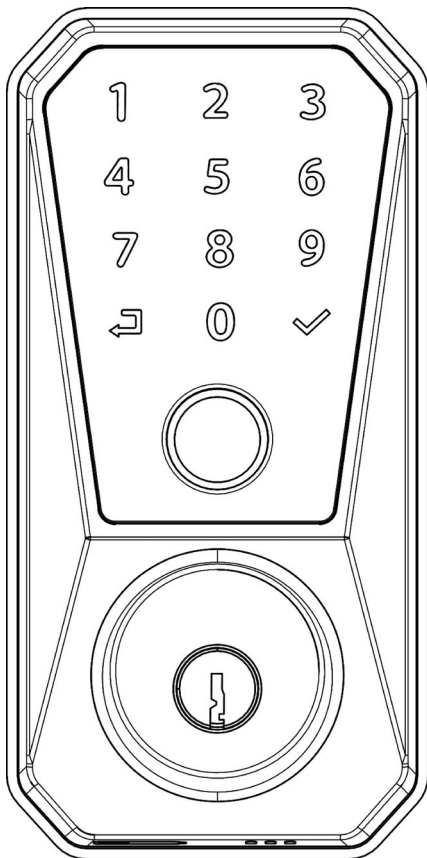


Cyber Lock™

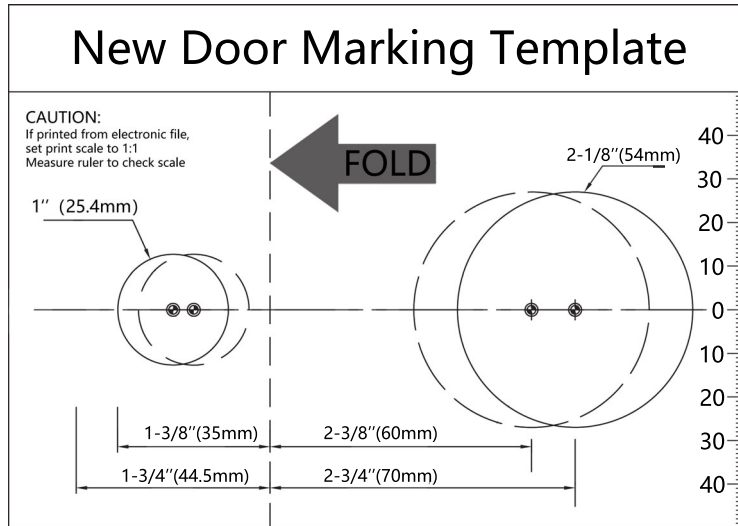
Installation and Programming Instructions



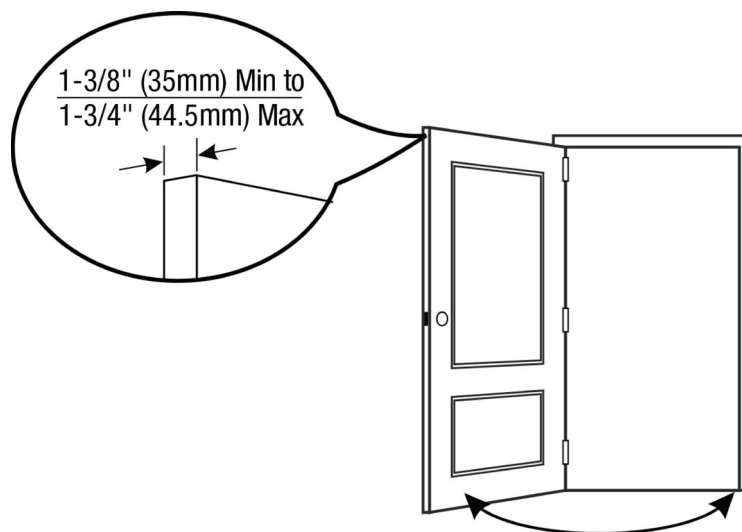
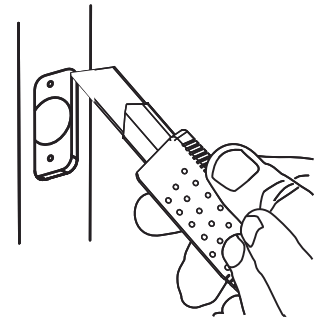
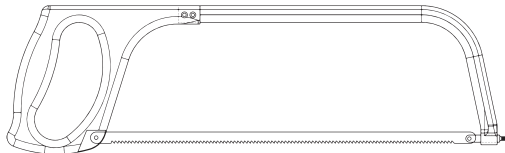
FAILURE TO FOLLOW THESE INSTRUCTIONS COULD RESULT IN DAMAGE TO THE PRODUCT AND VOID THE FACTORY WARRANTY



Preparing Door

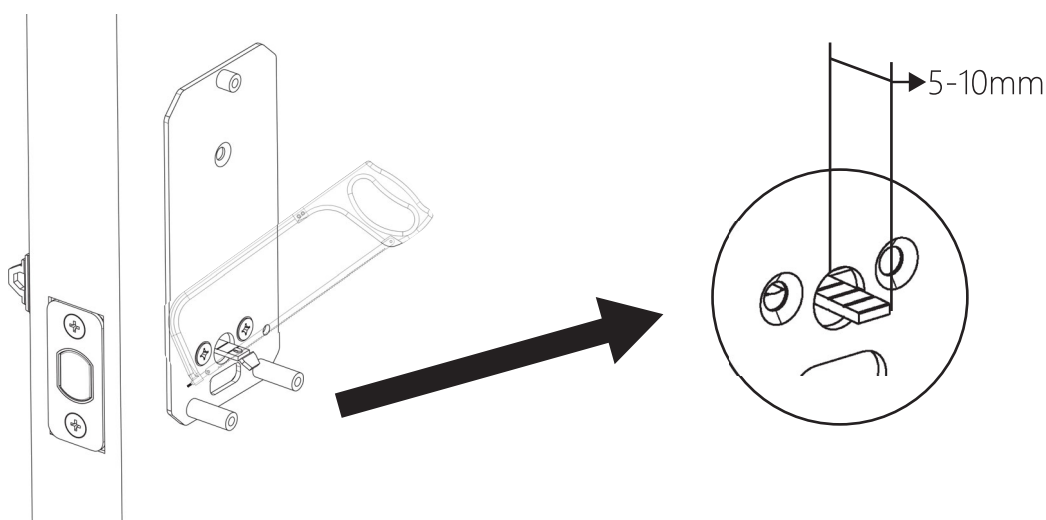
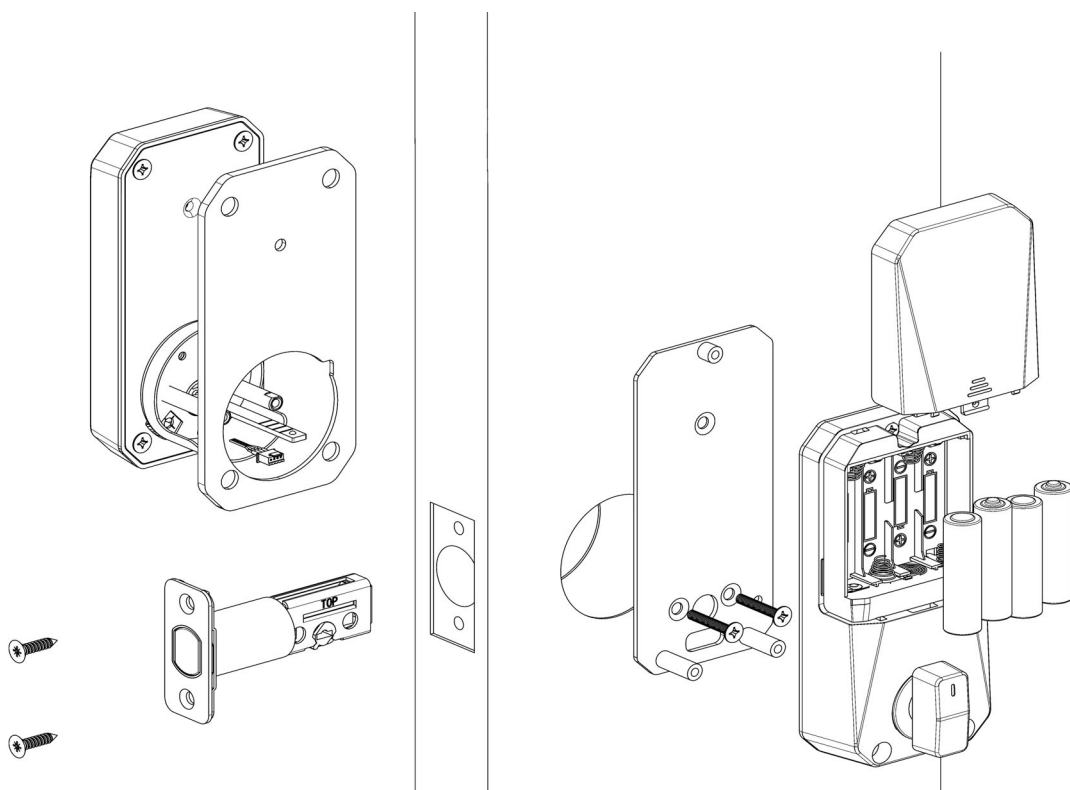


Refer to template for
correct door prep





Preparing Door

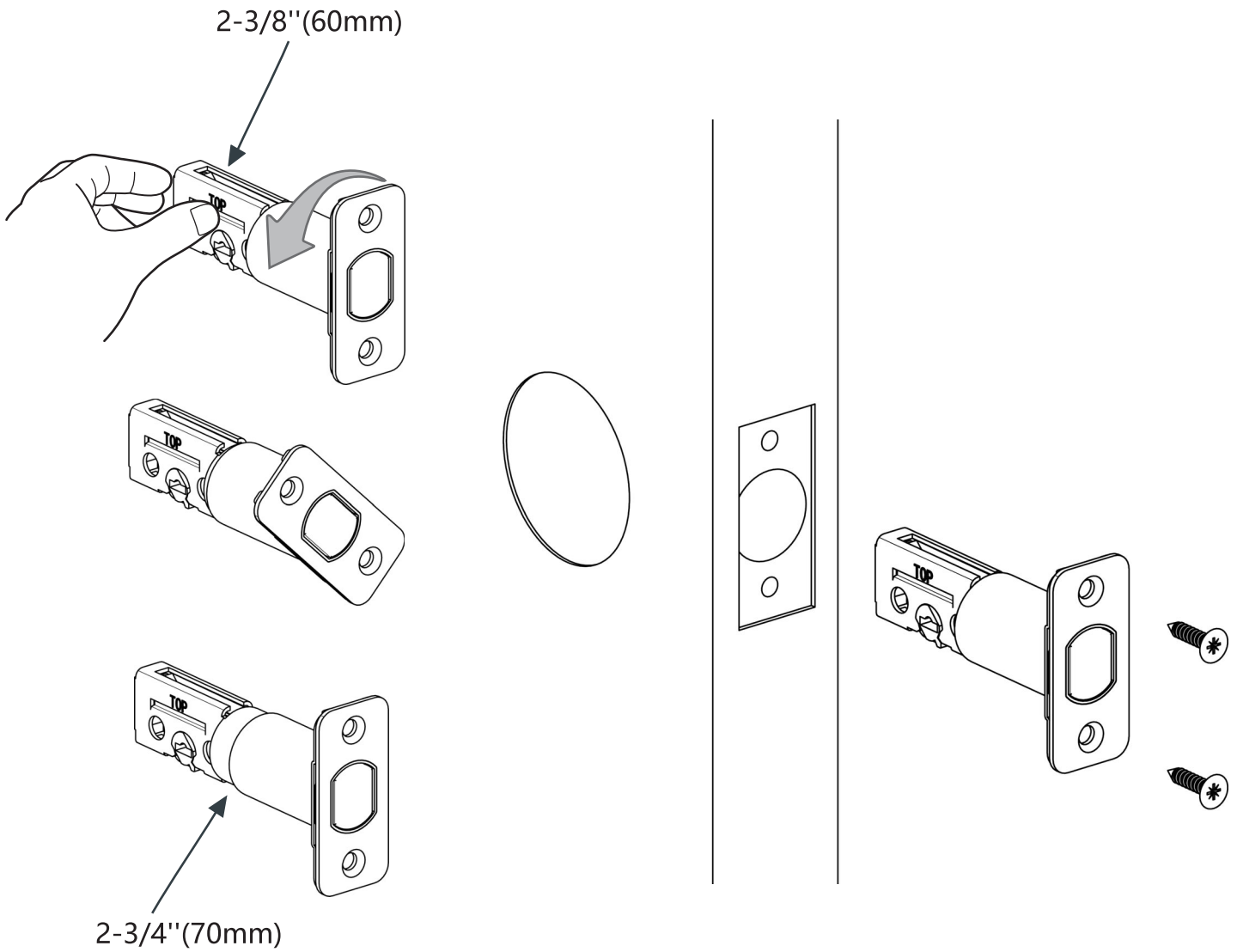


Extend the flat bar to a position where it is 5 - 10mm away from the mounting plate.



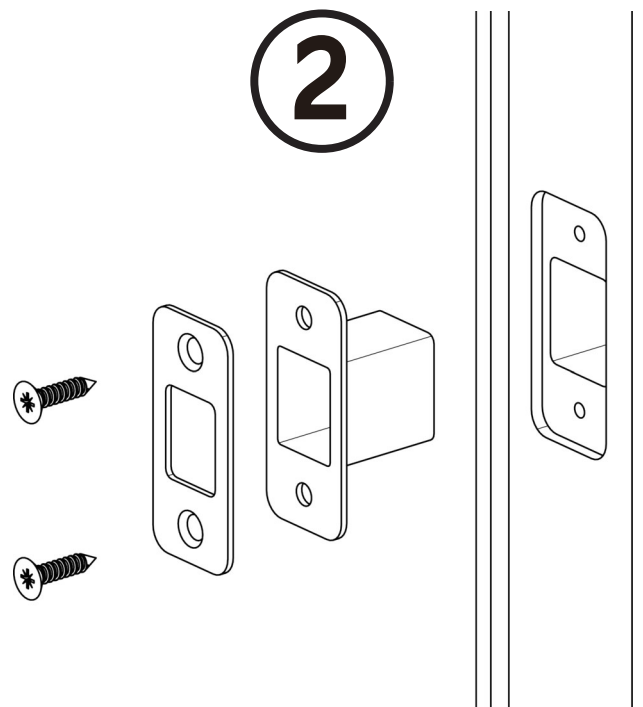
An excessive length may lead to lock malfunctions.

1

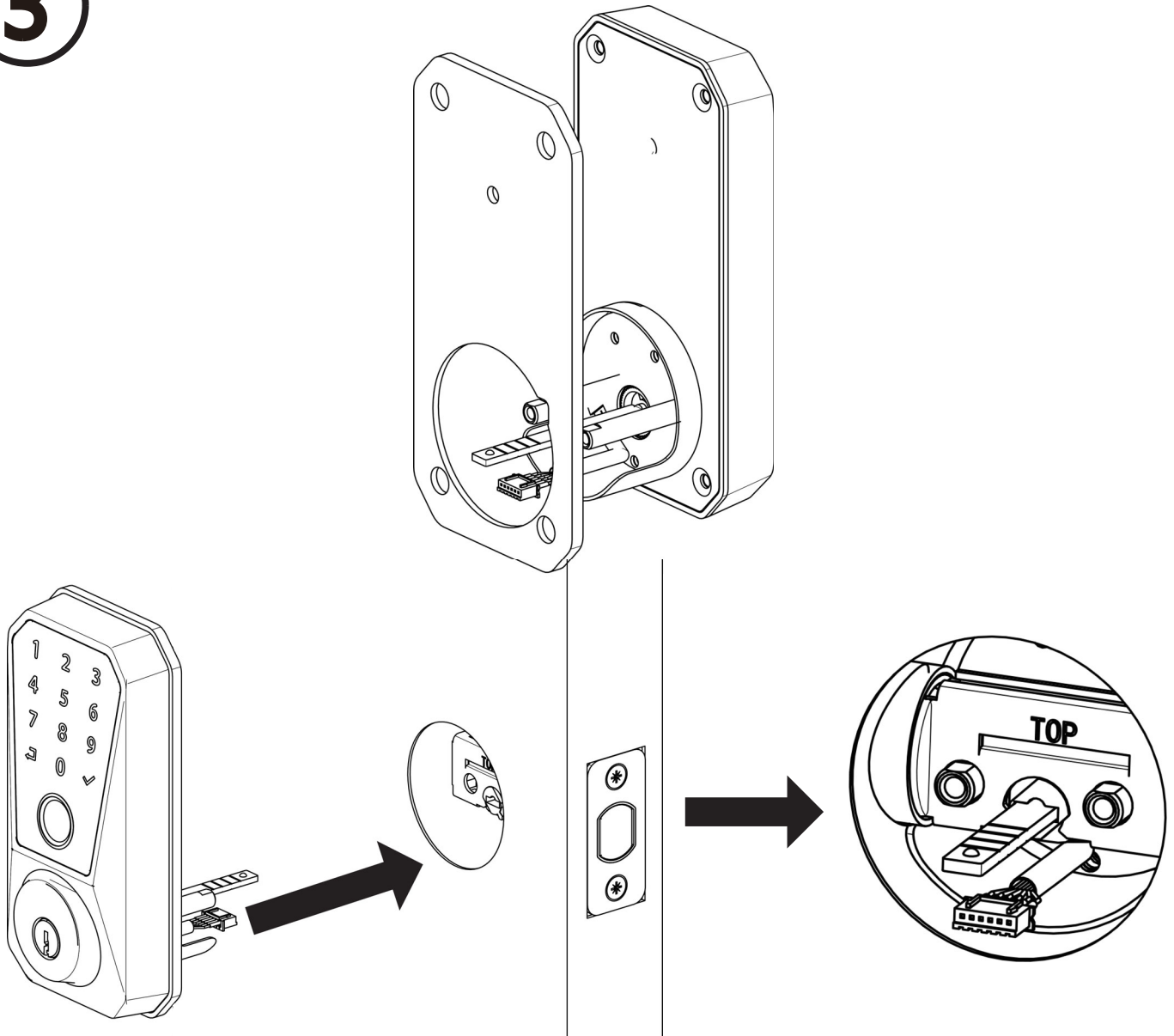


Bolt must be in retracted (unlocked) position. Note horizontal orientation of mechanism.

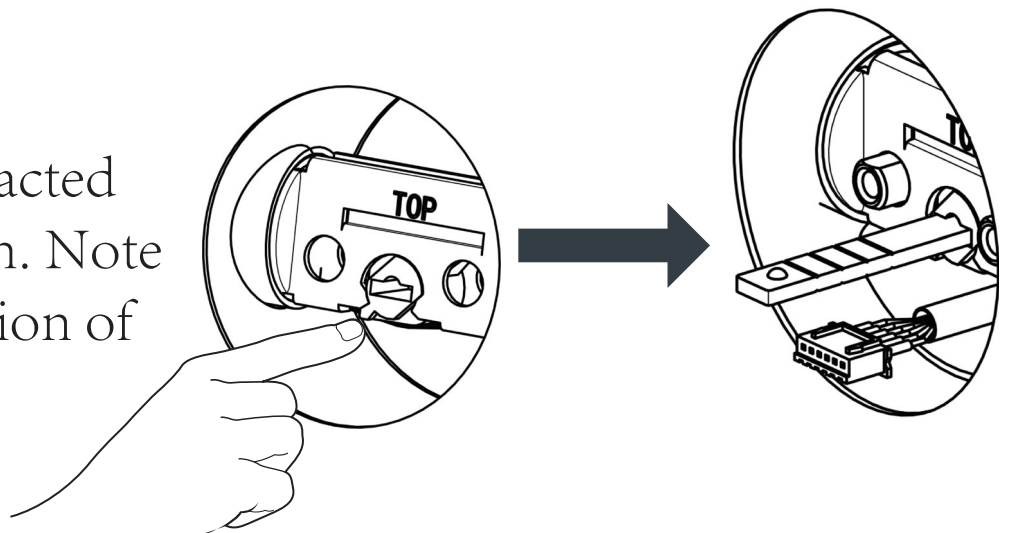
2



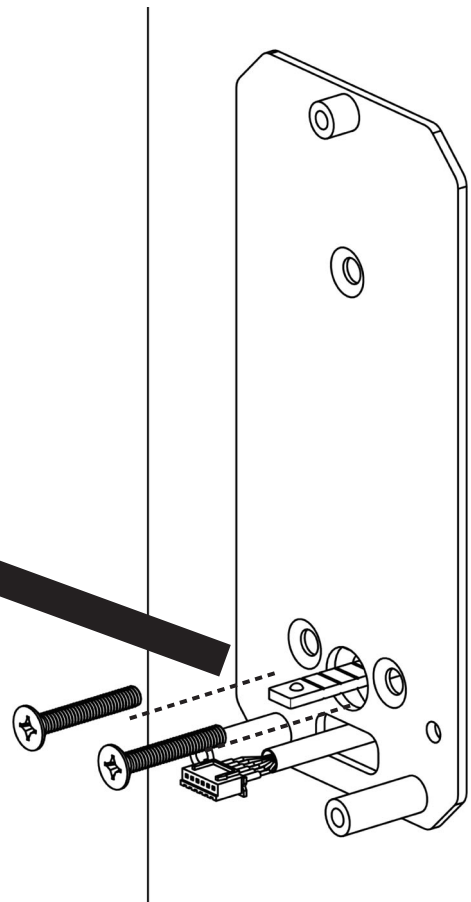
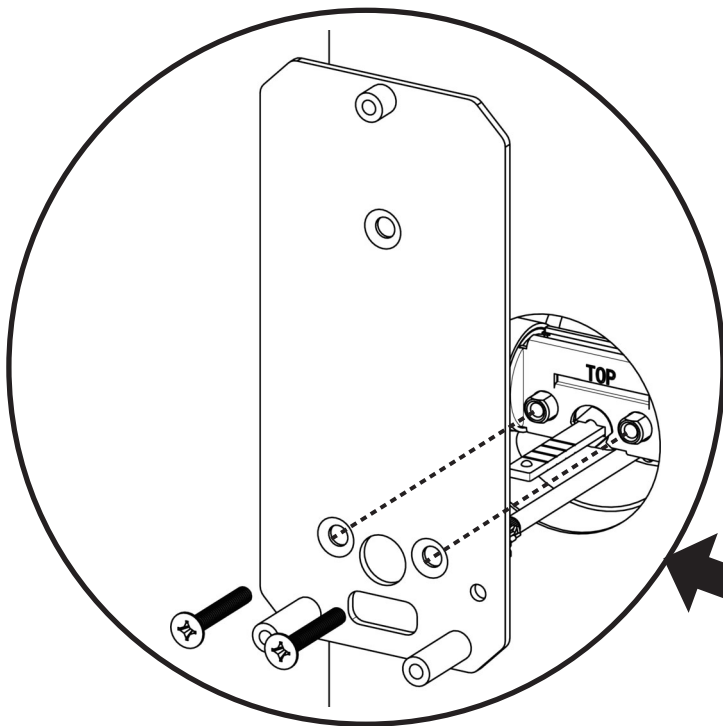
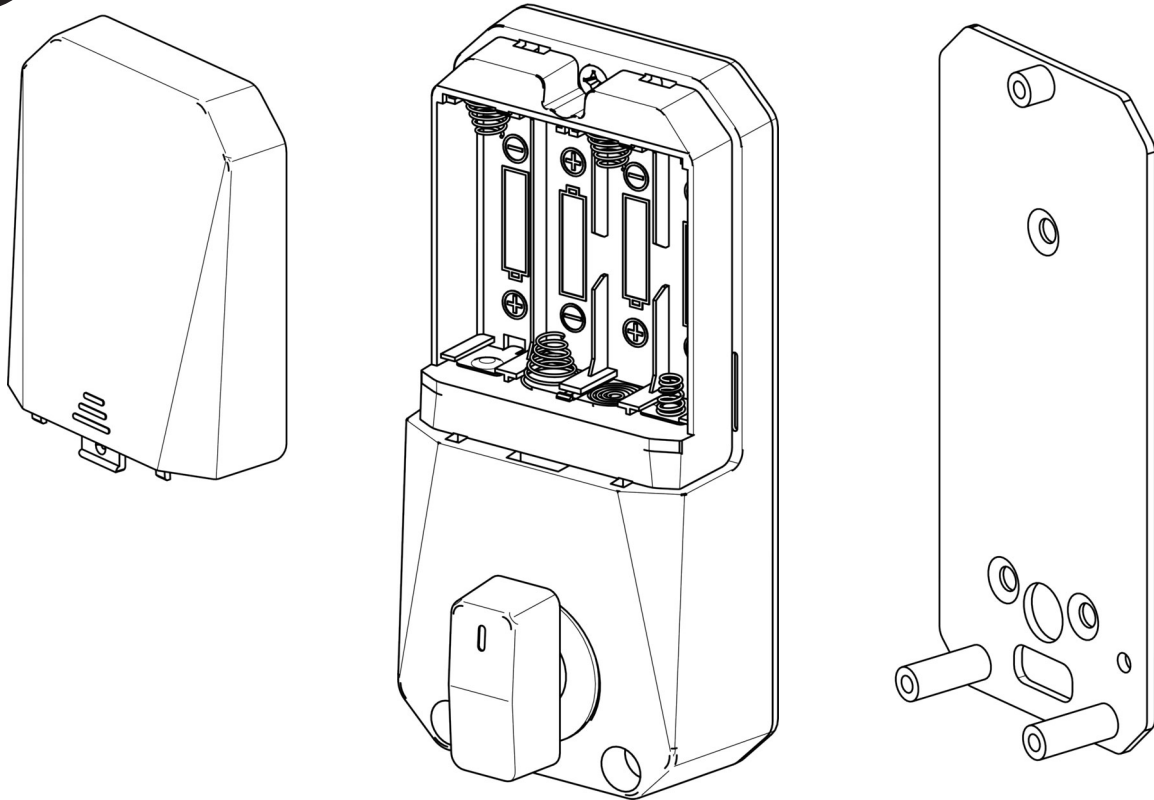
3



Bolt must be in retracted (unlocked) position. Note horizontal orientation of mechanism.

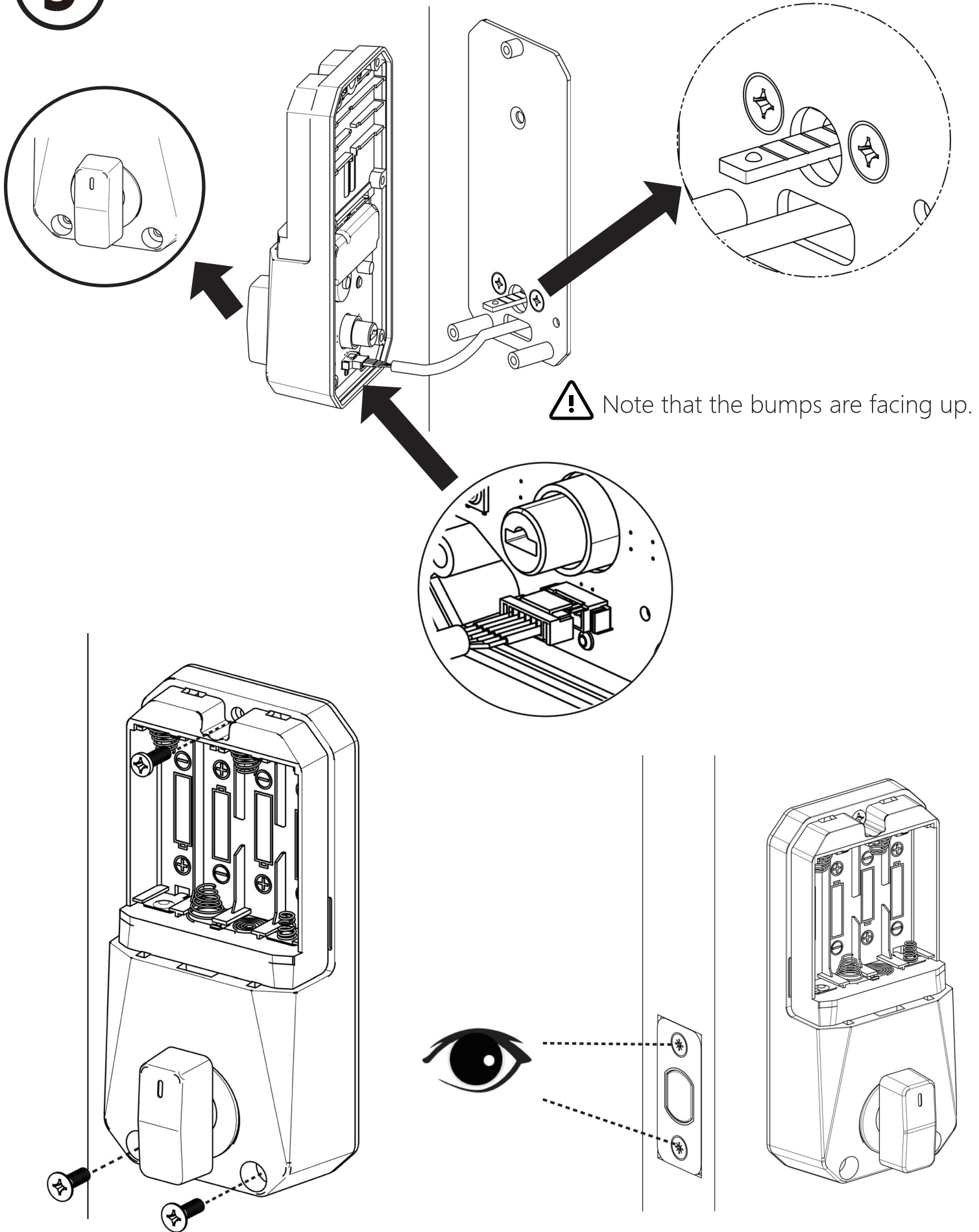


4



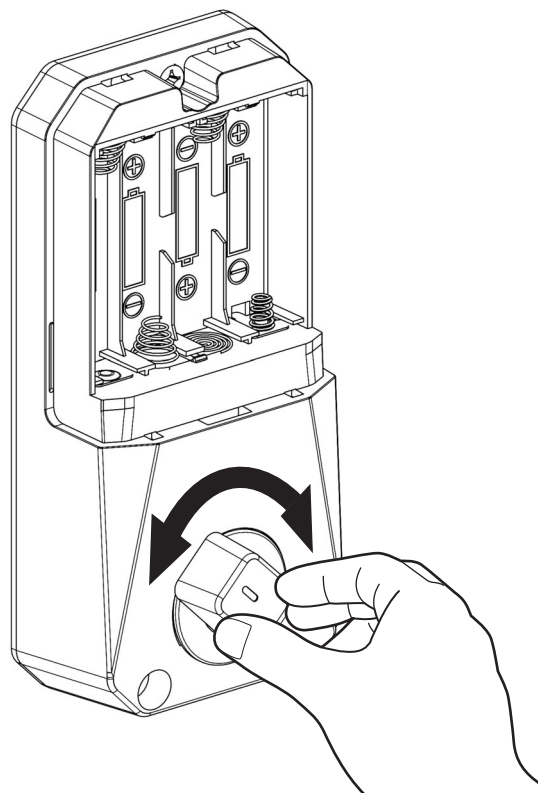
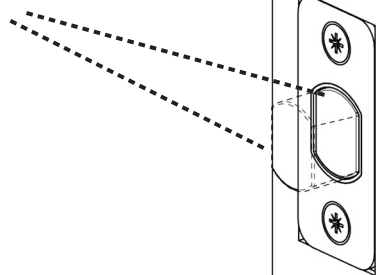
Pay attention to the alignment of the screw posts.

5

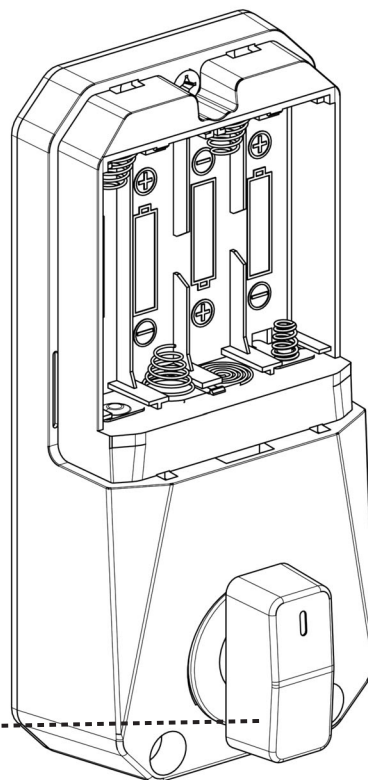
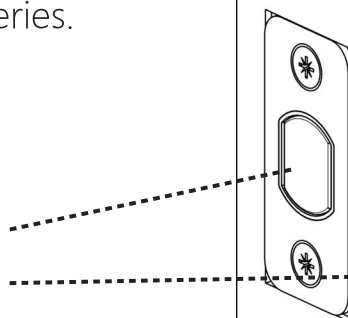




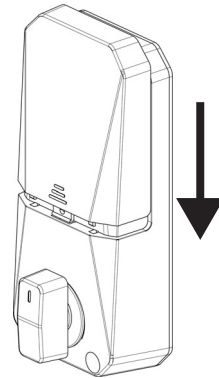
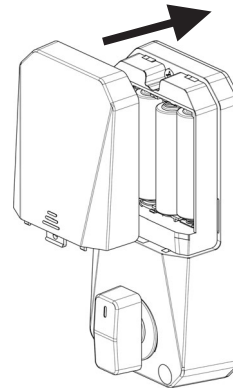
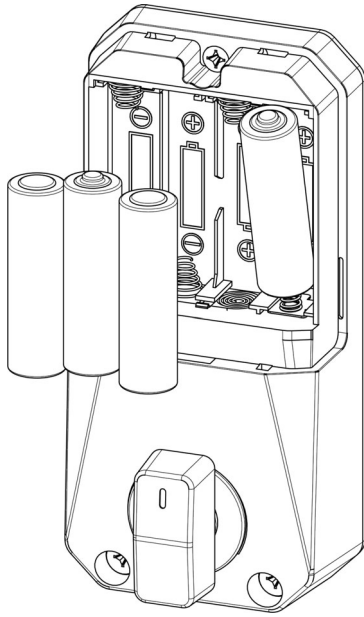
Testing Operation



Bolt must be in retracted (unlocked) position before installing batteries.

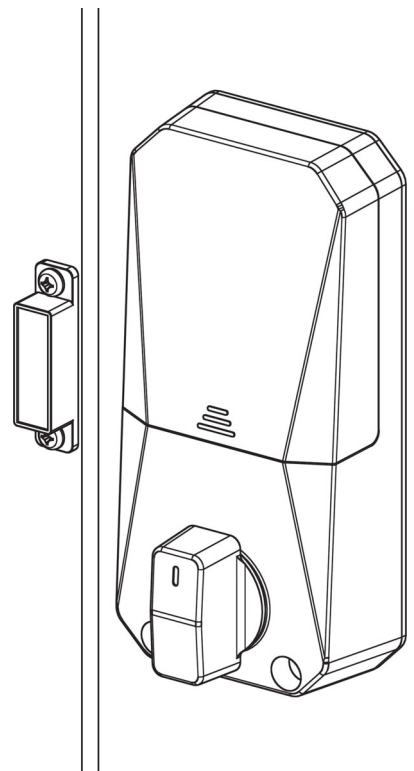
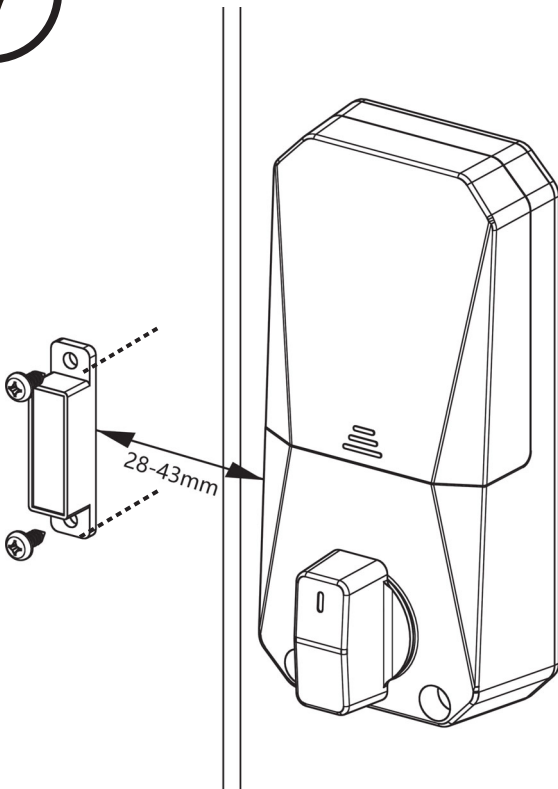


6



Lock automatically adjusts for proper handing.

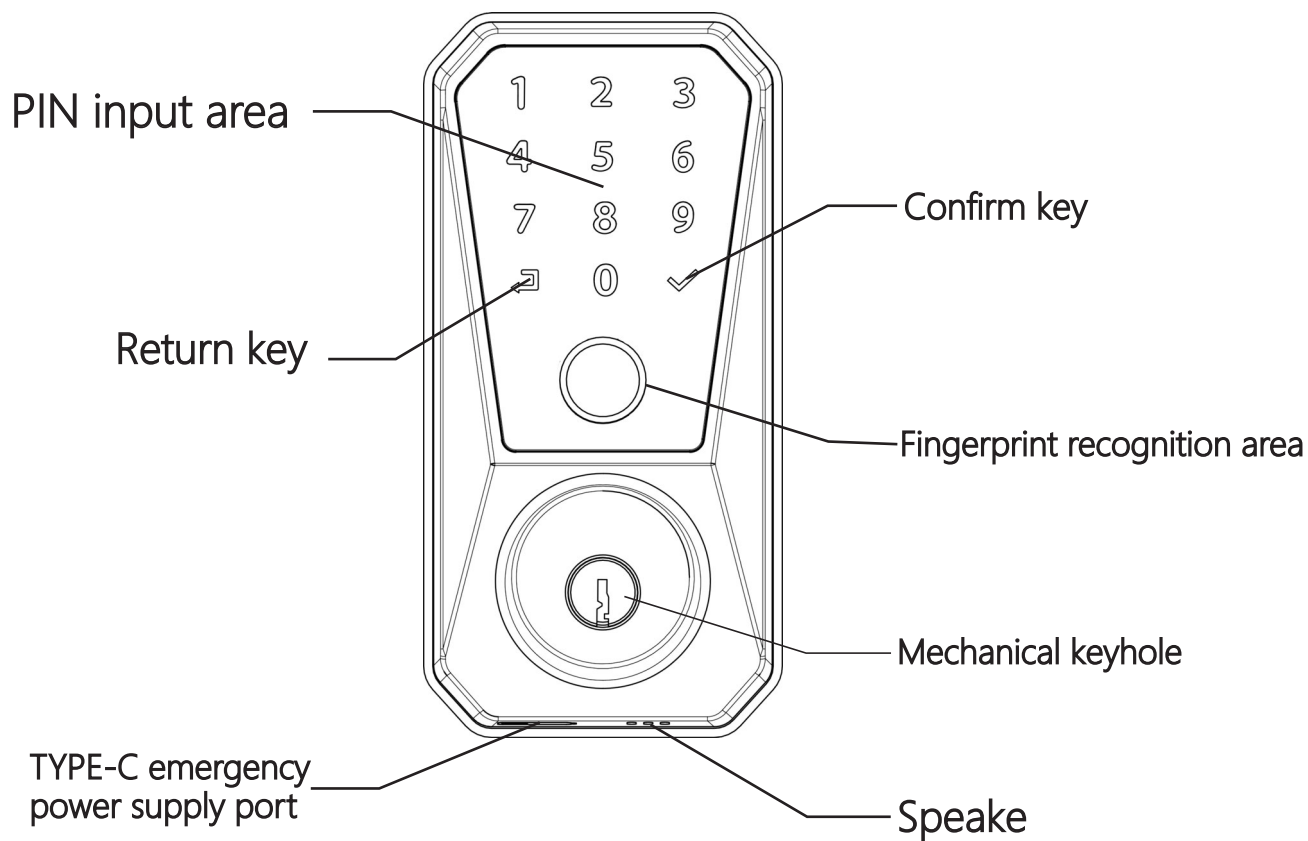
7



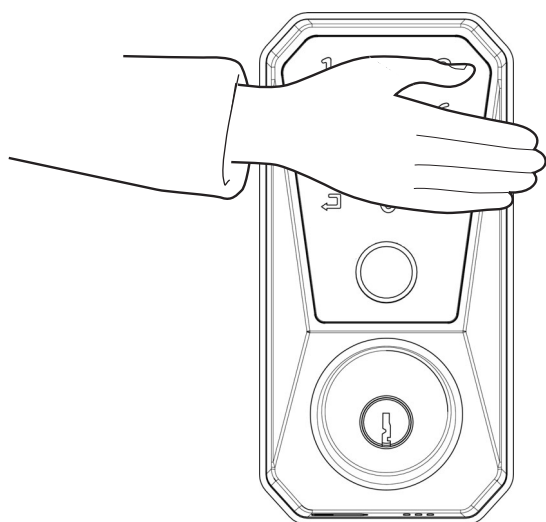
The magnet is 28-43mm away from the door lock.



Programming Instructions



Lock Activation



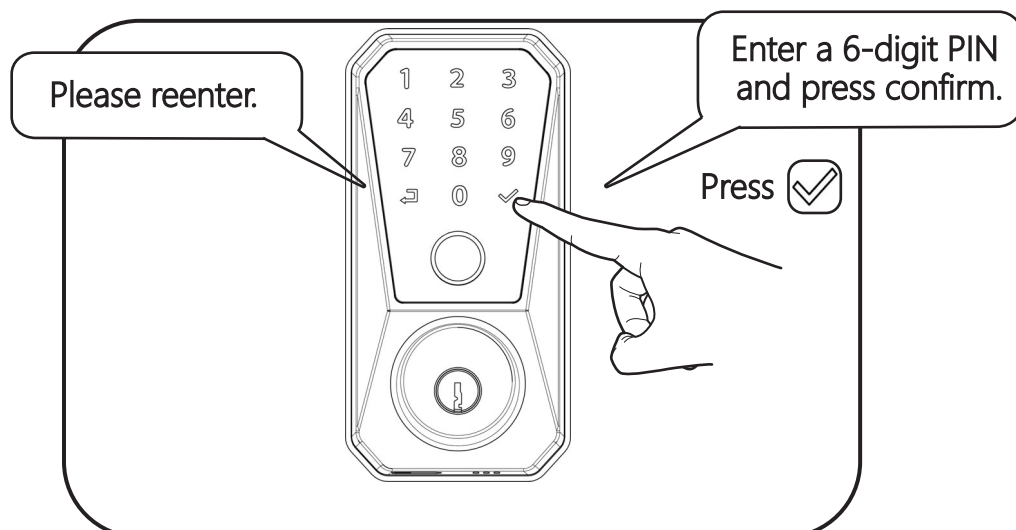
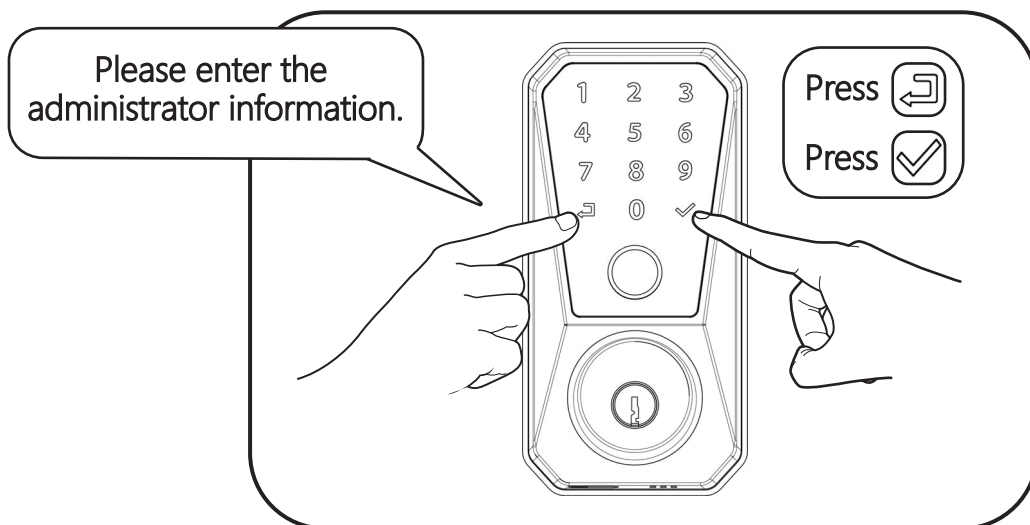
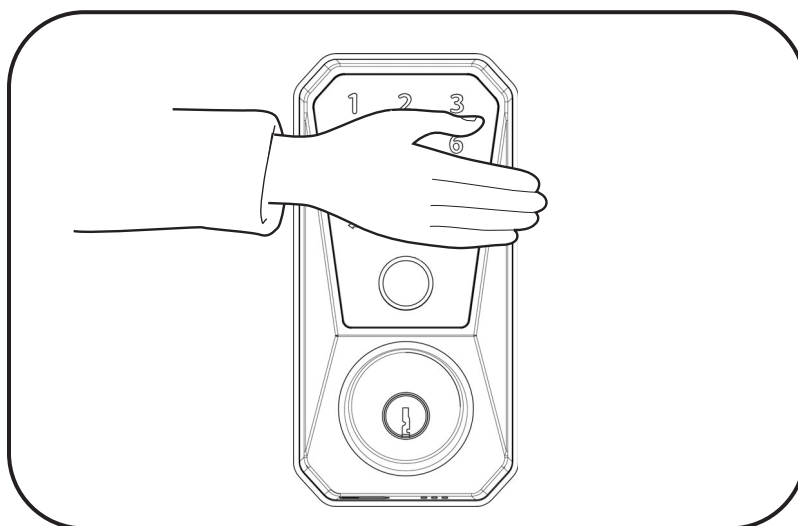
Max admin PIN codes = 5 (0 ~ 4)

Max normal user PIN codes = 92 (5 ~ 96)

Max temporary user PIN codes = 3 (97 ~ 99)

1 Creating Master PIN Code

Creating the master code should be done when installing or after resetting the lock to factory defaults. Lock programming and use are impossible until this step is completed.

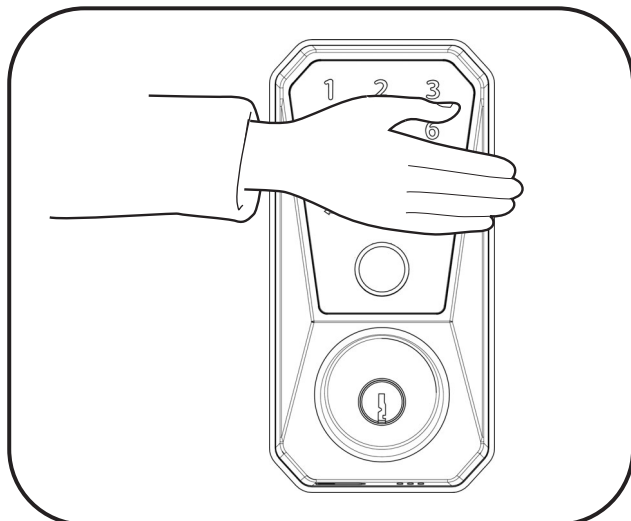


② Creating User PIN Code

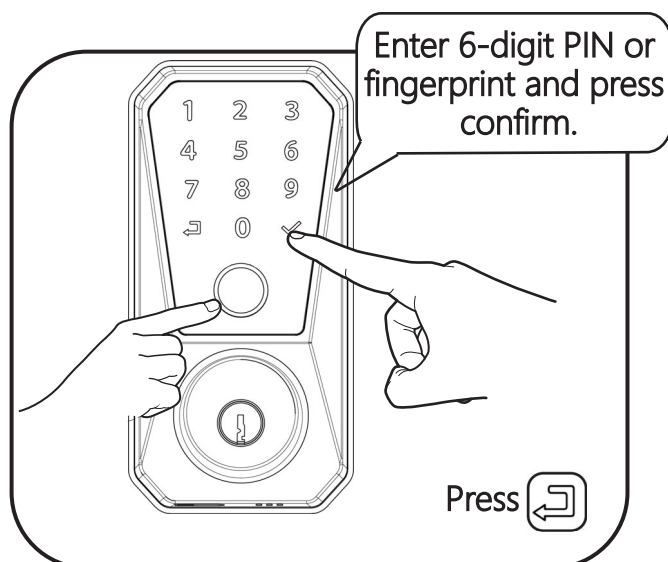
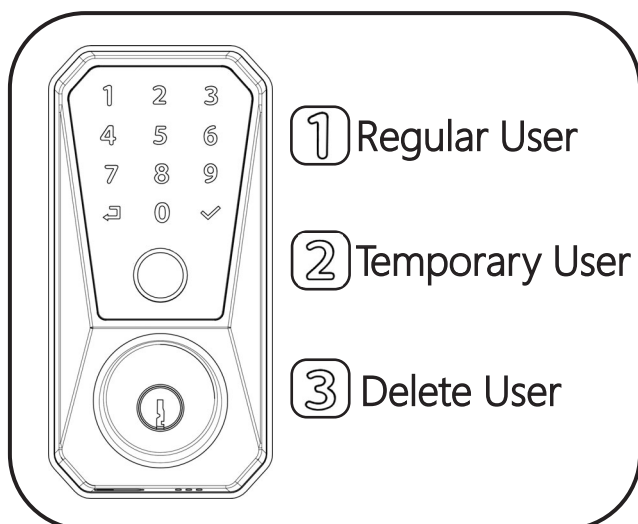
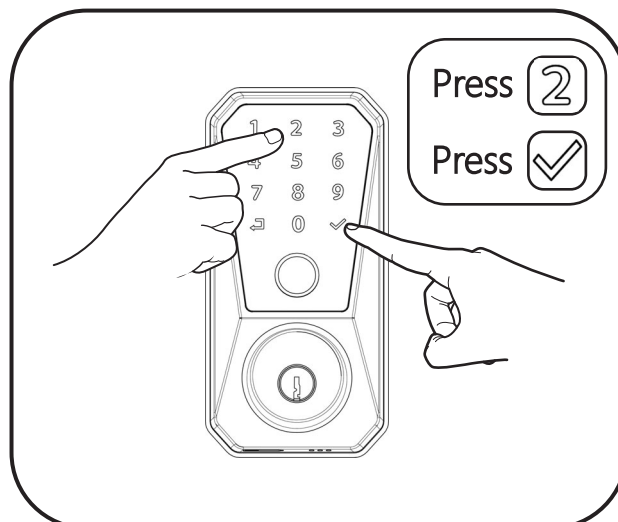
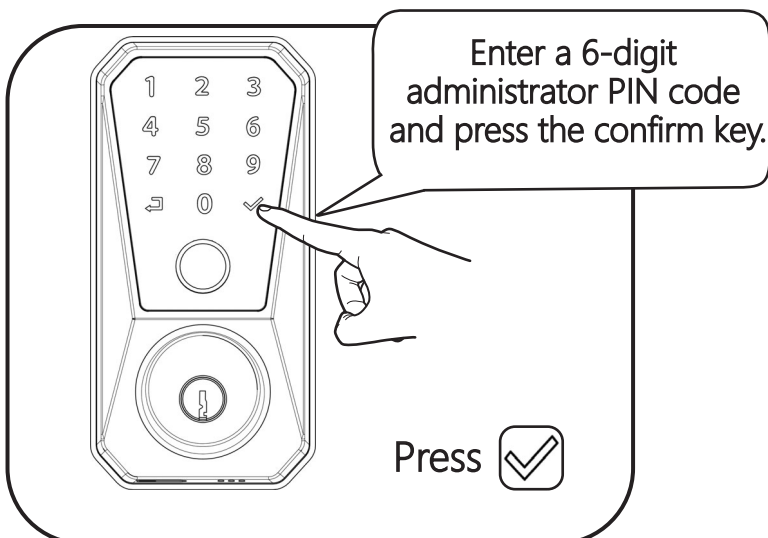
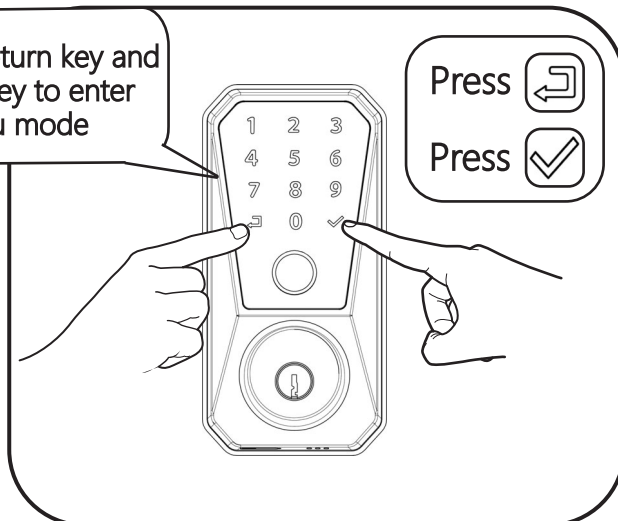
Master PIN code must be created first.

Regular users: max 92 PIN codes (5 to 96).

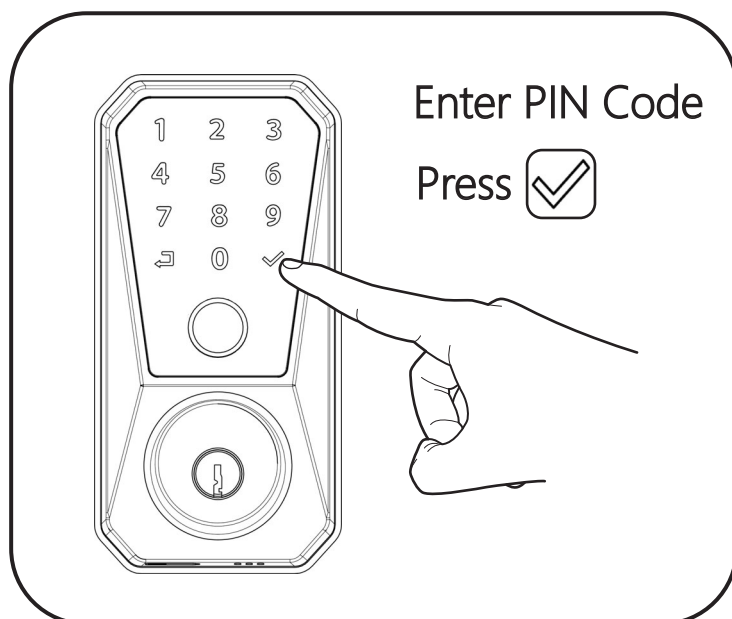
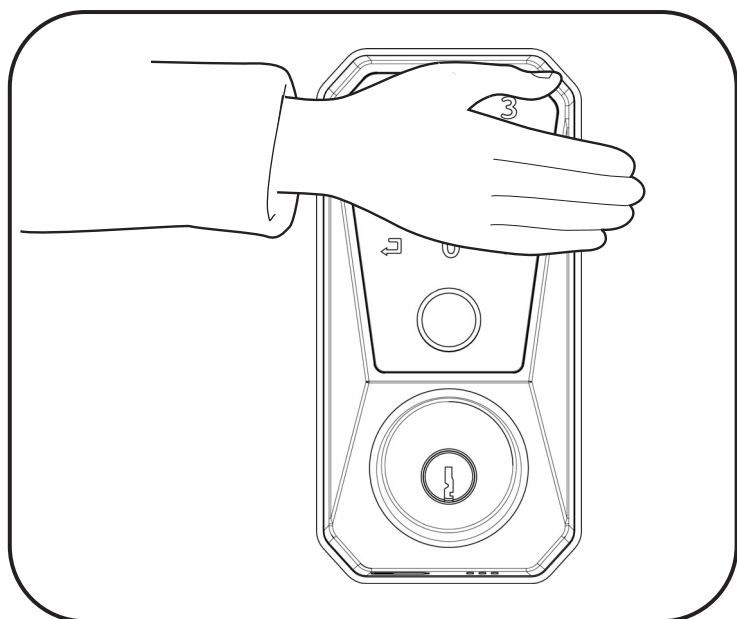
Temporary users: max 3 PIN codes (97 to 99).



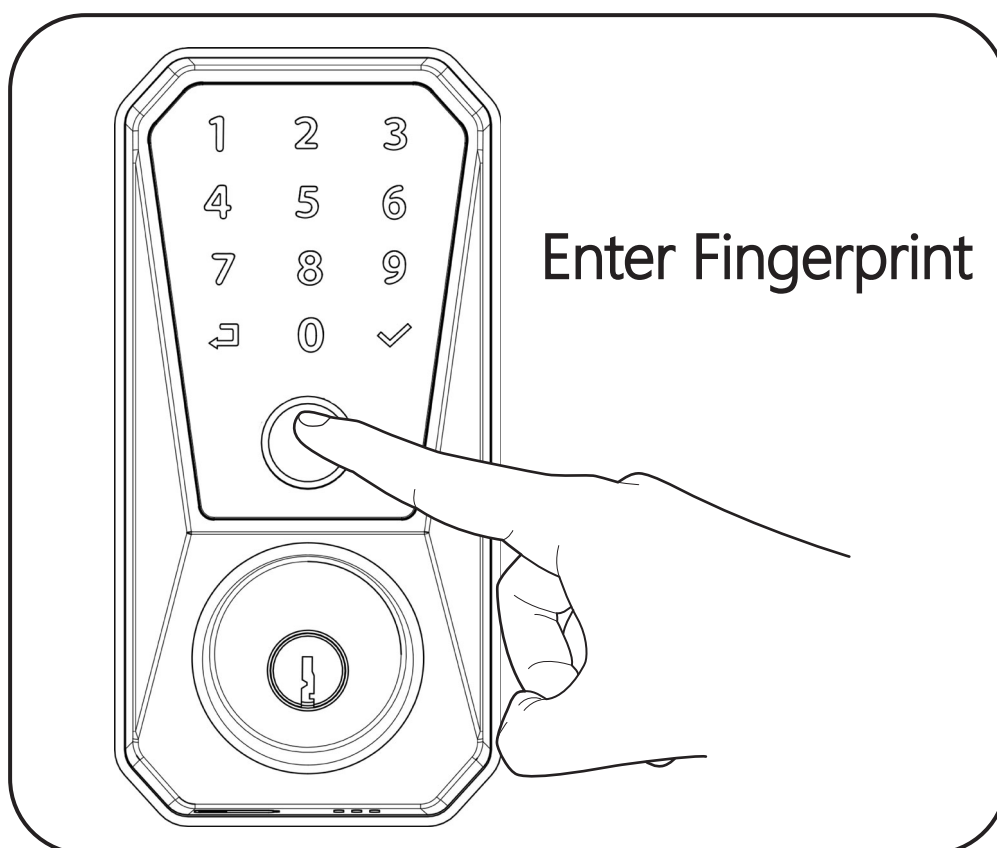
Press the return key and confirm key to enter menu mode



③ Unlocking Door with PIN Code



OR



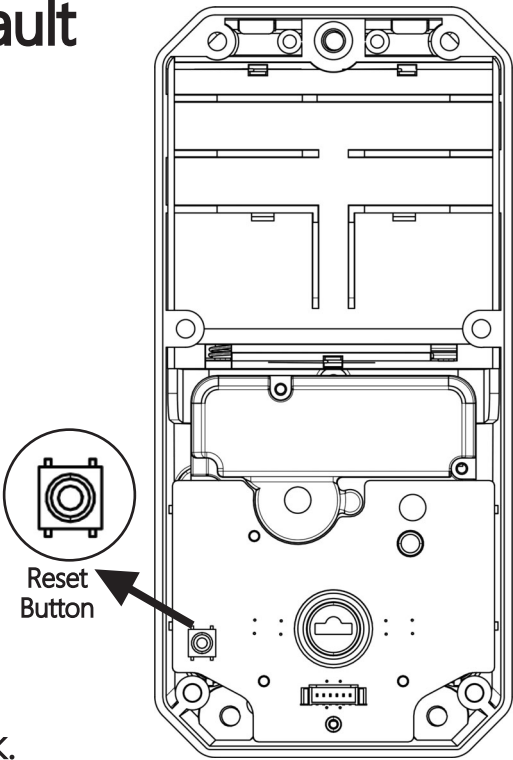
4

Resetting Lock to Factory Default

When the lock is reset to factory defaults, all user passwords (including the administrator PIN) will be deleted, and all PIN code programming functions will be restored to the original default settings (as shown below).

1. Remove the battery cover.
2. Take off the rear lock case.
3. Reset button (see the picture on the right).
4. Press and hold the reset button for at least 5 seconds.
Release the reset button.
5. Install the battery cover.

After resetting, creating the master password is the only available option and must be performed before any other programming of the lock.



Interior Escutcheon



Factory Settings

* The Master PIN code must be registered prior to any other programming of the lock.

Settings	Factory Setting
Master PIN Code	* Needs Registration
Automatic Re-locking	Off
Automatic Re-locking Time	5(Seconds)
Dual Verification Mode	Off
Silent Mode	Off
Vacation Mode	Off
Volume Setting	Off
Language Setting	English
Error Code Entry Limit	5 Times

Usage Instructions

I. Administrator User Management (0 - 4)

1. When entering the system for the first time, user number 0 needs to be registered.
After entering the main menu again, four administrator users can be continuously registered.
2. To delete an administrator: After verifying the administrator password, enter the corresponding number (such as 003) to delete the user with the corresponding number.
Note that the last administrator user cannot be deleted.

II. Ordinary User Management (5 - 96)

1. To add an ordinary user: Fingerprints or passwords can be directly registered.
2. To add a temporary user: Fingerprints or passwords can be registered. This user can only be used once and becomes invalid after use.
3. To delete a user: After verifying the user password, enter the user number (such as 005) to delete the corresponding ordinary user. Note that if there are no registered users, this menu cannot be entered.

III. Door Lock Settings



1. Function settings:

- 1.1. Automatic locking setting: After enabling this function, the door will automatically lock at a fixed time after being opened. The default time is 5 seconds.
- 1.2. Automatic locking time setting: The automatic locking time can be set within the range of 5 - 95 seconds. Adjust by pressing 2 and 5.
- 1.3. Dual verification mode setting: After enabling it, two ordinary users need to be verified before the door can be opened. Administrators are not subject to this restriction.
- 1.4. Silent mode setting: After enabling it, there will be no sound prompt when unlocking.
- 1.5. Vacation mode setting: After enabling it, administrators can open the door, but ordinary users cannot.

Usage Instructions

2. Volume adjustment: Press 2 and 5 to select the volume. The default is medium volume.
3. Language setting: Chinese or English can be selected.
4. Unlocking direction setting: After clicking, the motor will automatically determine the unlocking direction.
5. Wireless function setting: Click to connect to the APP. (If there is no wireless module, this menu will not be broadcast).

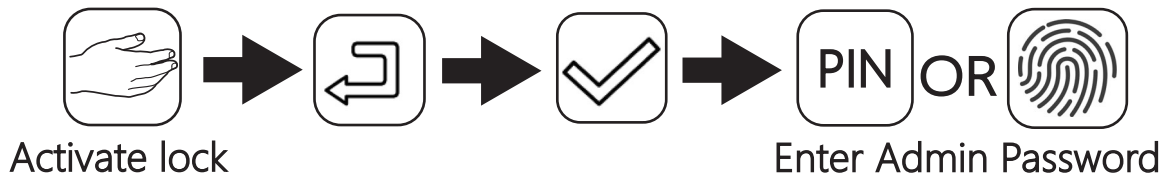
IV. Usage Instructions

1. System power supply: Four AA batteries provide 6V power.
2. User capacity: There are 5 administrator users (0 - 4), 92 ordinary users (5 - 96), and 3 temporary users (97 - 99).
3. To enter the management menu: Press  and then .
4. Initialization state: Enter 123456 and confirm to unlock. Note that during initialization, any fingerprint can unlock the door.
5. System lockout: If there are five consecutive verification failures, the system will flash three red lights and be locked for three minutes.
6. Low battery warning: When the battery power is lower than 4.8V, a warning will be prompted.



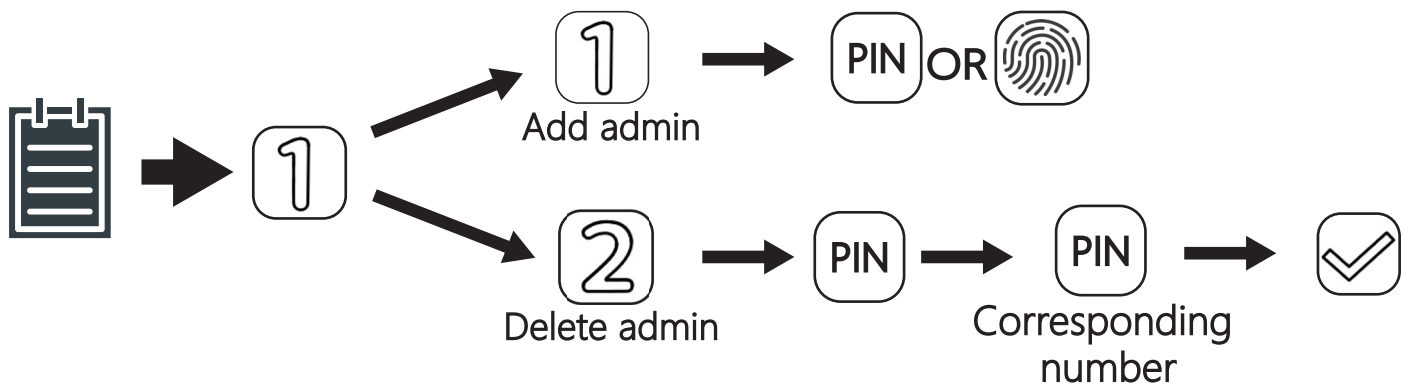
Door Lock Menu Options

Access Menu Mode

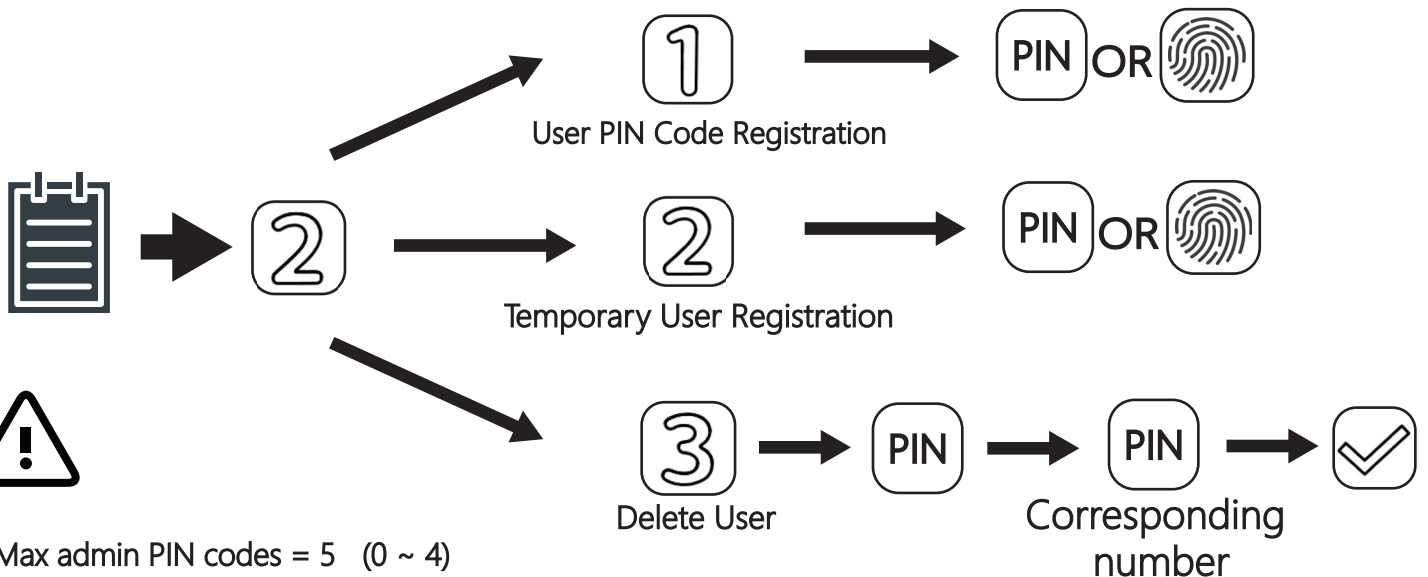


The administrator password for factory settings is 123456. In factory settings state, all fingerprints can unlock the lock.

Admin PIN Code Setting



User PIN Code Setting



Max admin PIN codes = 5 (0 ~ 4)
Max normal user PIN codes = 92 (5 ~ 96)
Max temporary user PIN codes = 3(5 ~ 96)



Door Lock Menu Options

Door Lock Settings



3

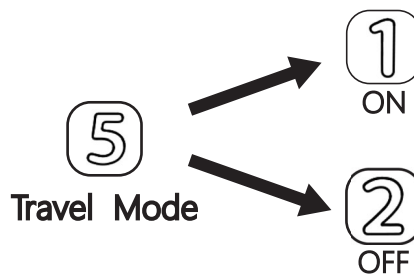
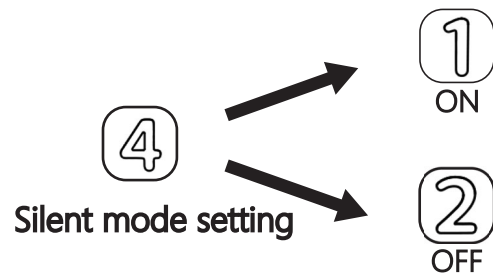
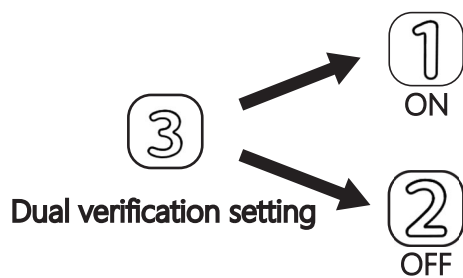
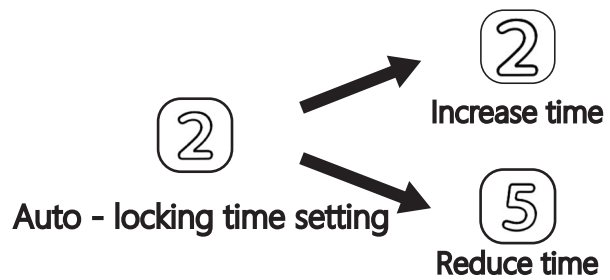
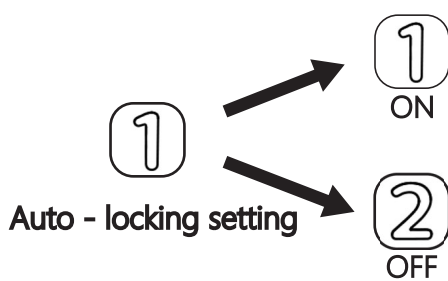
Door Lock Settings



1

Function settings

① Function settings

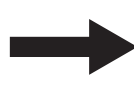


② Volume control



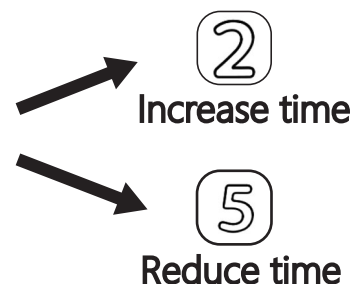
3

Door Lock Settings



2

Volume control





Door Lock Menu Options

Door Lock Settings



3



1

Door Lock Settings

Function settings

③ Language setting



3



3



1

English



2

Chinese

Door Lock Settings

Language setting

④ Unlock direction setting



3



4

Unlock direction settings

Operation Success

⑤ APP Connect



3



5



1



Door Lock Settings

Wireless setting

Connect with
wireless device

Factory Reset



4



PIN

OR



Enter Admin Password



Add a Smart Lock in the App



3



5



1



Door Lock Settings

Wireless setting

Connect with
wireless device

1

Download the app by scanning the QR code or search for "Smart Life" in the App Store/Google Play. Create a new account or log in with an existing one.



2



Add Device

Start the APP, Select "Add Device".

3

Select "Auto Scan", after you find the device, then click "Next".



816

Added successfully

4

After the device is added, click "Done".

NOTE

If you find that the rotation is opposite to the direction of the door lock, you can click the set icon and set the rotation direction to "anticlockwise unlock".

The first time you open the door with APP, the device will calibrate the lock position. Please ensure that the device has been properly installed on the door lock.



Connect the lock to the gateway



3



5



1



Door Lock Settings

Wireless setting

Connect with
wireless device

1

Download the app by scanning the QR code or search for "Smart Life" in the App Store/Google Play. Create a new account or log in with an existing one.



2



Add Device

Start the APP, Select "Add Device".

3

Select "Auto Scan", after you find the device, then click "Next".



Devices to be added: 1



Wireless
Bluetooth Gate...

Add

4

After the device is added, click "Done".

5

Enter the Wi-Fi name and password

Enter Wi-Fi Information

Choose Wi-Fi and enter password



Wi-Fi Name

Select Wi-Fi



Password

FCC Warning:

This equipment has been tested and found to comply with the limits for a Class B digital device, pursuant to part 15 of the FCC Rules. These limits are designed to provide reasonable protection against harmful interference in a residential installation. This equipment generates, uses and can radiate radio frequency energy and, if not installed and used in accordance with the instructions, may cause harmful interference to radio communications. However, there is no guarantee that interference will not occur in a particular installation. If this equipment does cause harmful interference to radio or television reception, which can be determined by turning the equipment off and on, the user is encouraged to try to correct the interference by one or more of the following measures:

- Reorient or relocate the receiving antenna.
- Increase the separation between the equipment and receiver.
- Connect the equipment into an outlet on a circuit different from that to which the receiver is connected.
- Consult the dealer or an experienced radio/TV technician for help.

Caution: Any changes or modifications to this device not explicitly approved by manufacturer could void your authority to operate this equipment.

This device complies with part 15 of the FCC Rules. Operation is subject to the following two conditions:

(1) This device may not cause harmful interference, and (2) this device must accept any interference received, including interference that may cause undesired operation.

This equipment complies with FCC radiation exposure limits set forth for an uncontrolled environment. This equipment should be installed and operated with minimum distance 0cm between the radiator and your body.