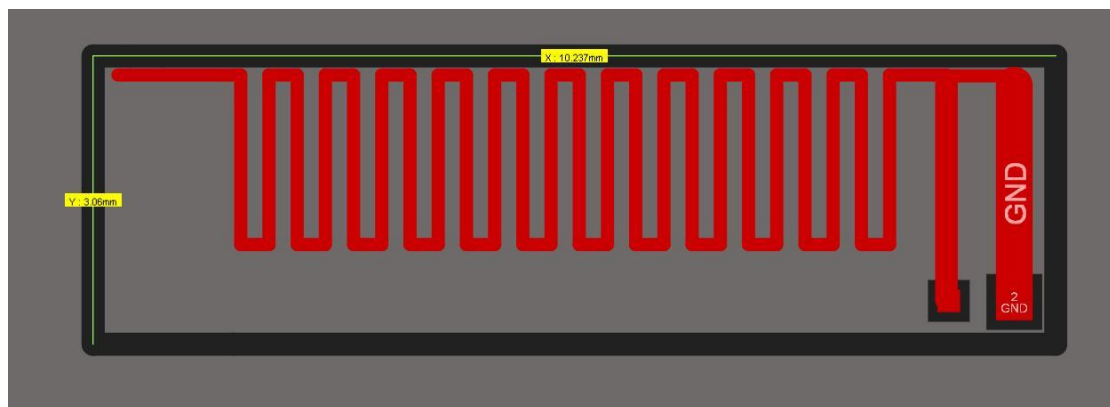


## 1. Antenna Description:

Antenna type	PCB antenna
Model	W6-2
Frequency range	2400-2500MHz
Manufacturer	Polymath Technology Development CO.,LTD.
Address	N. Side, 4/F, Building #1, 8 Xiyang Rd., Xinyang Industrial Zone, Haicang District, Xiamen 361026, China
ANT Peak Gain	1.50 dBi

## 2. Antenna Photo:



## 3. Test Equipment & Conditions

### 3.1 Test instrument

VSWR is tested using Agilent E5071B connected to a hand mechanism, and the status is free space.

### 3.2 Test environment and methods

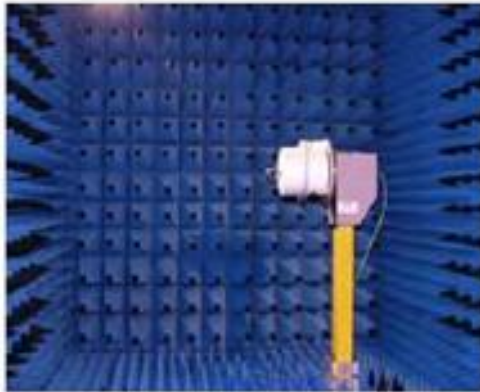
Dark room specifications: ETS-743

TD-SCDMA test equipment: StarPoint SP6010/Agilent 8960

LTE-TDD/FDD-SCDMA test equipment: StarPoint SP8011/CMW500

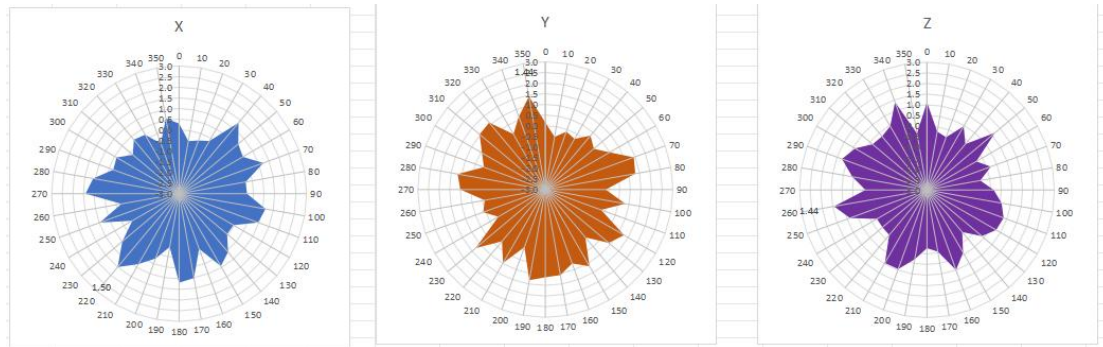
WCDMA/GSM/CDMA test equipment: Agilent 8960

Passive efficiency testing equipment: Agilent Technologies E5071B

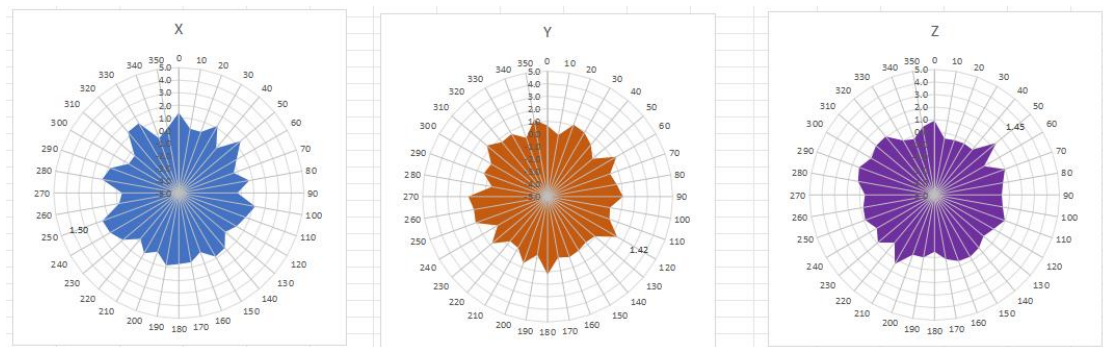


### 4 . Antenna Radiation Pattern

## 2400MHz



## 2450MHz



## 2500MHz

