

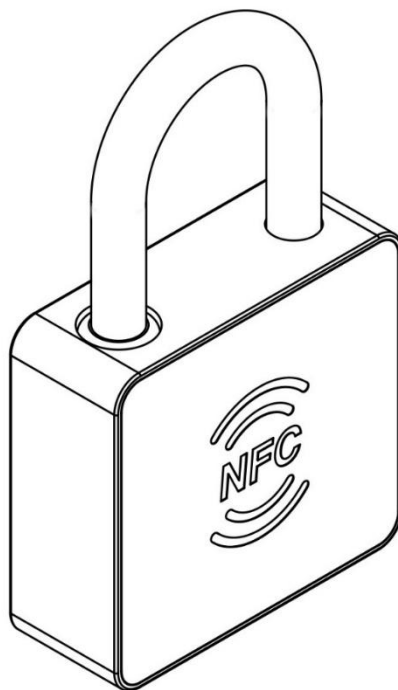
Mbowel

NFC Power-Free Padlock

Manual

v1.0.0

Model : NFL-01



Introduction

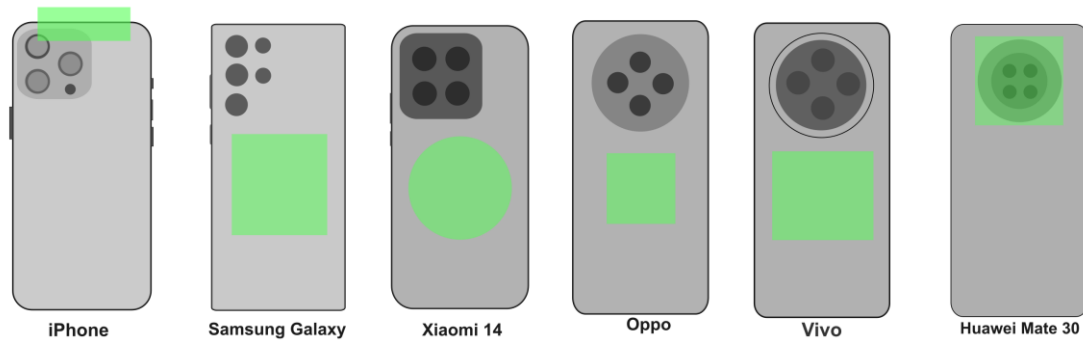
NFL-01, NFC Power-free Padlock is a smart, secure padlock that requires no battery and can be unlocked using the NFC function of a smartphone.

Features:

- **NFC** : The lock contains no internal battery; it is powered via NFC induction from a smartphone to complete the unlocking process.
- **Compatibility**: Supports smartphones with NFC function, including Android and iOS devices.
- **Secure Encryption**: Utilizes a high-security encrypted communication protocol to prevent unauthorized copying or hacking.
- **Waterproof and Dustproof**: Rated IP67 for protection, suitable for both indoor and outdoor environments.

Instructions

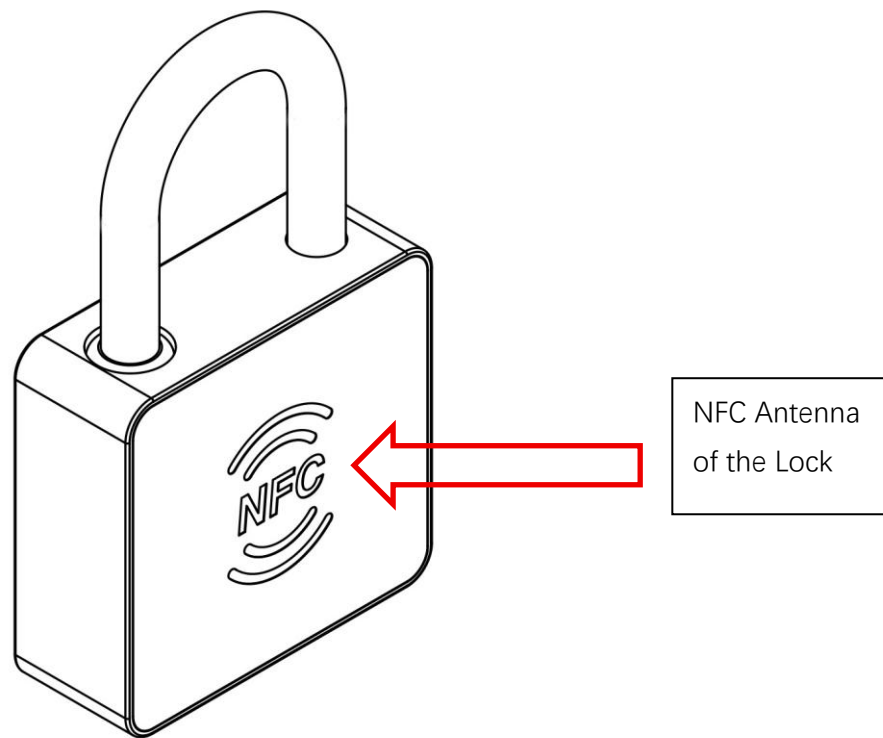
Locate the Position of your Smartphone's NFC Antenna



Example of Smartphone NFC Antenna Locations

please confirm the location of your smartphone's NFC antenna.

Refer to your phone's user manual or search online for the NFC antenna position for your device model.



The lock's NFC antenna is located in the center of the lock body.

Mbowel


App Download


Please scan the QR code to install the application (available for Android / iOS).





For first-time use, please register your user information first.


Register





 Please enter nickname

 Please enter phone number or e...

 Please enter password



 Please confirm password





Already have an account? [Log in](#)


Register


☒ I have read and agree to the [《User Agreement》](#)

Login



 Please enter phone number or e...

 Please enter password

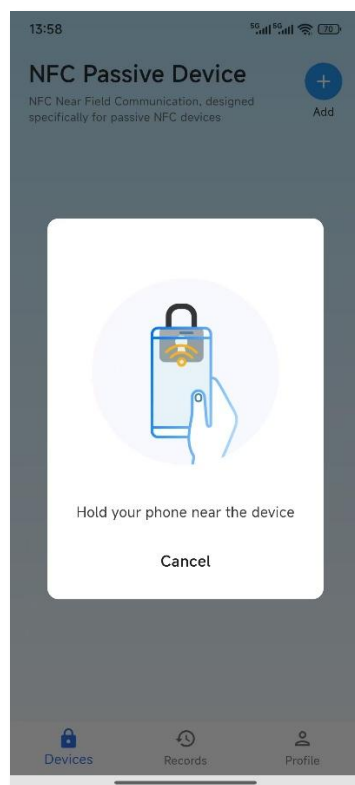
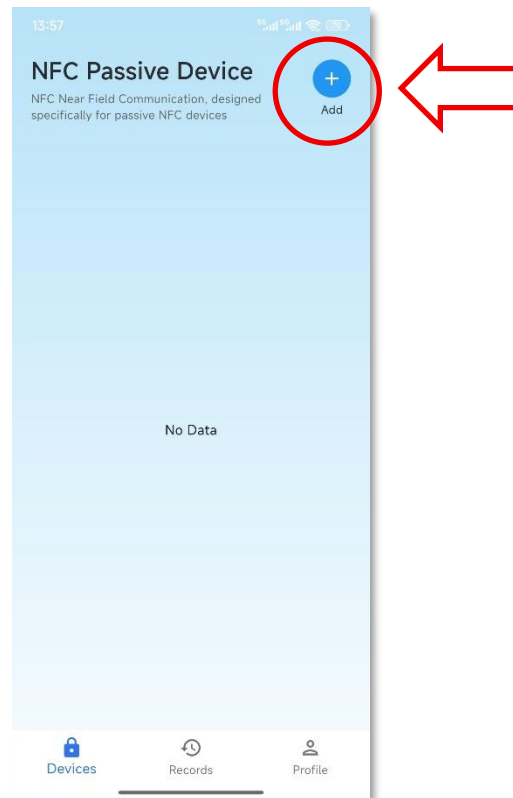


[Go to Register](#)

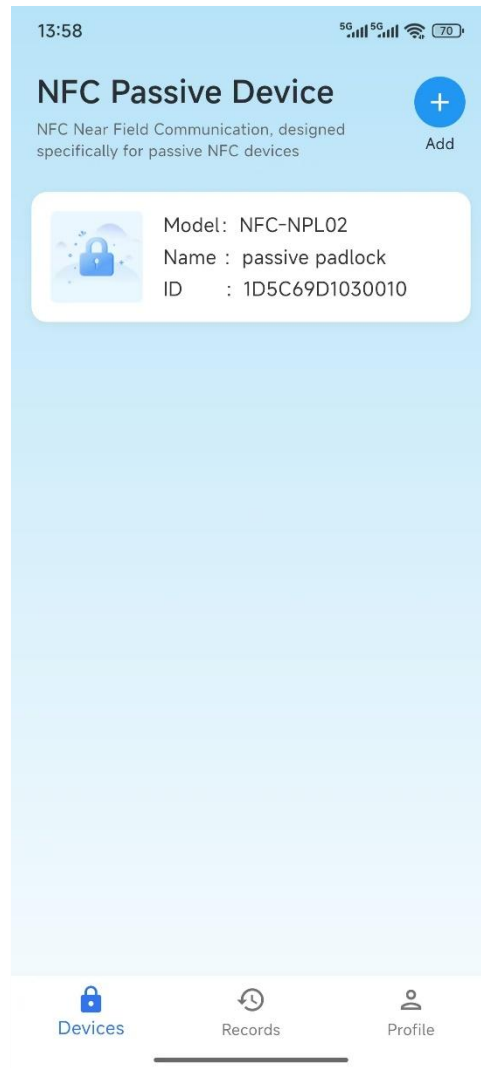
Login

☒ I have read and agree to the [«User Agreement»](#)

Add Lock

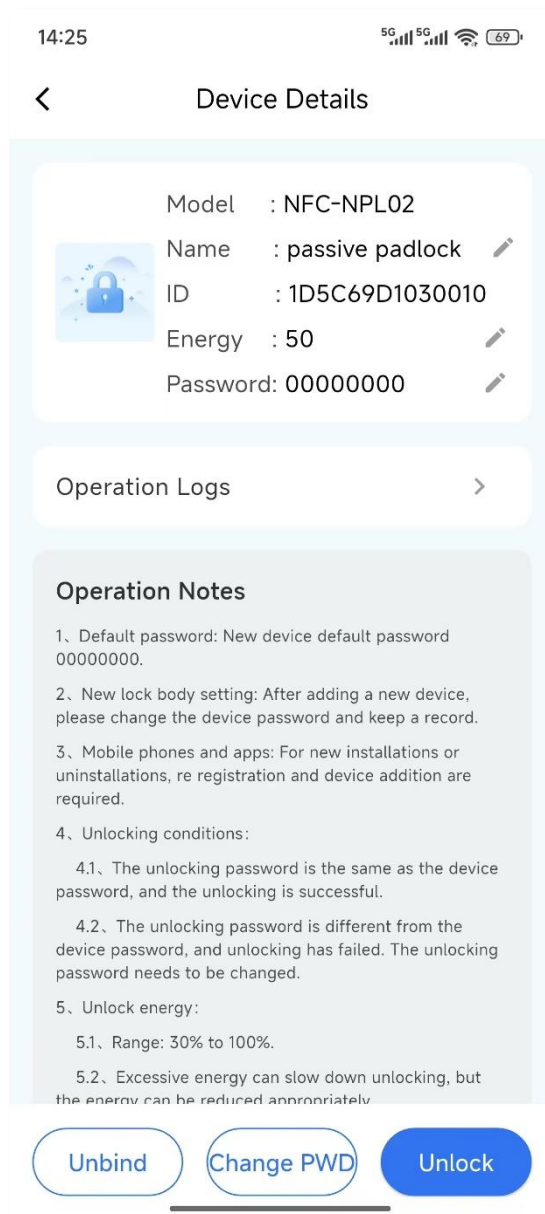


Please bring your phone close to the lock body (distance less than 10 mm), and ensure the phone's NFC antenna is aligned with the lock's NFC antenna.



NFC Lock added successfully.

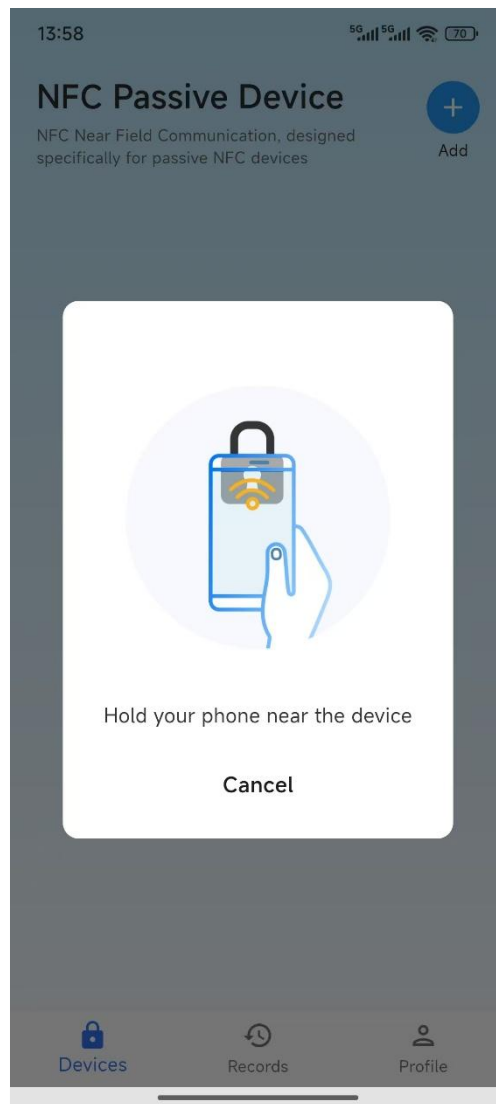
Tap the 'Lock ID'



You can change the Name and the Password (Note: **It's is crucial!**)

Please remember or write down this password. It's your Lock's Key!

Tap 'Unlock' to open the lock



Tap "Unlock" and bring your phone close to the lock (within 10 mm), making sure to align your phone's NFC antenna with the lock's NFC antenna.

Frequently Asked Questions (FAQ)

Q1: Why doesn't the lock respond when my phone is near it?

A: Please check the following:

- Whether the App is installed and running on your phone;
- Whether NFC function is enabled on your phone;
- Whether your phone is close enough to the lock (within 10 mm), and whether the phone's NFC antenna is properly aligned with the lock's NFC antenna;
- Whether your phone model supports NFC functionality.

Q2: Does the lock require charging or battery replacement?

A: This NFC padlock is designed to be NFC and requires no charging or battery replacement.

Q3: Can multiple users share the same NFC lock?

A: Yes. You can share the unlock password for the lock with other

Mbowel

users. Each user can use their own phone to unlock the lock via NFC using the shared password.

Note: For security, if you no longer wish a user to have access, promptly change the unlock password and update it on the lock to ensure only authorized users can unlock it.

Q4: What should I do if my phone is lost?

A: We recommend immediately logging into the NFC lock app from another phone, binding the lock using the original password, and then changing the unlock password to protect your security.

Specification

Item	Description
Power	No battery; NFC power supply form smartphone
Comm standard	ISO/IEC 14443 Type A/B
IP Rate	IP67
Weight	120g
Dimension	99.2 x 58.2 x 22 mm
Supported Device	Android / iOS

FCC Caution.

This device complies with part 15 of the FCC Rules. Operation is subject to the following two conditions:

- (1) This device may not cause harmful interference, and
- (2) this device must accept any interference received, including interference that may cause undesired operation.

Any Changes or modifications not expressly approved by the party responsible for compliance could void the user's authority to operate the equipment.

Note: This equipment has been tested and found to comply with the limits for a Class B digital device, pursuant to part 15 of the FCC Rules. These limits are designed to provide reasonable protection against harmful interference in a residential installation. This equipment generates uses and can radiate radio frequency energy and, if not installed and used in accordance with the instructions, may cause harmful interference to radio communications. However, there is no guarantee that interference will not occur in a particular installation. If this equipment does cause harmful interference to radio or television reception, which can be determined by turning the equipment off and on, the user is encouraged to try to correct the interference by one or more of the following measures:

- Reorient or relocate the receiving antenna.
- Increase the separation between the equipment and receiver.
- Connect the equipment into an outlet on a circuit different from that to which the receiver is connected.
- Consult the dealer or an experienced radio/TV technician for help.

FCC Radiation Exposure Statement:

This equipment complies with FCC radiation exposure limits set forth for an uncontrolled environment. This equipment should be installed and operated with minimum distance 20 cm between the radiator & your body.