

# 1. Antenna Description:

Antenna type	Ceramic antenna
Model	SC01-WIFI
Frequency range	5180-5240MHz
Manufacturer	Dingxin Electrical Appliance (Shenzhen) Co., Ltd
Address	Room 1301-6, Building A, Phase II, Sunshine Innovation Center, 1024 Nanxin Road, Nanshan District, Shenzhen, Guangdong 518000, China
ANT Peak Gain	1.75 dBi

# 2. Antenna Photo:

Length:3.21mm  
Width:1.48mm



### 3. Test Equipment & Conditions

#### 3.1 Test instrument

VSWR is tested using Agilent E5071B connected to a hand mechanism, and the status is free space.

#### 3.2 Test environment and methods

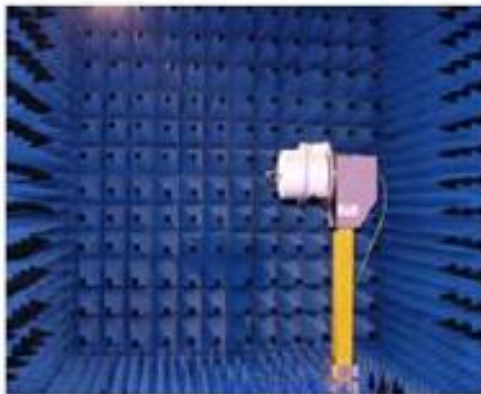
Dark room specifications: ETS-743

TD-SCDMA test equipment: StarPoint SP6010/Agilent 8960

LTE-TDD/FDD-SCDMA test equipment: StarPoint SP8011/CMW500

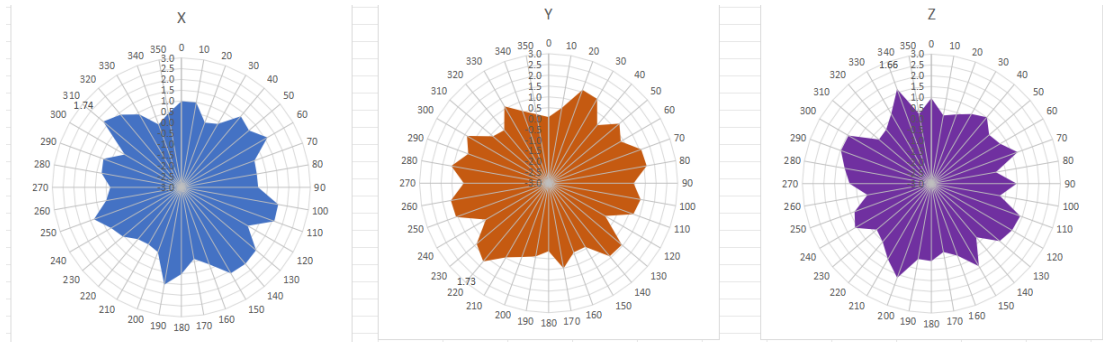
WCDMA/GSM/CDMA test equipment: Agilent 8960

Passive efficiency testing equipment: Agilent Technologies E5071B

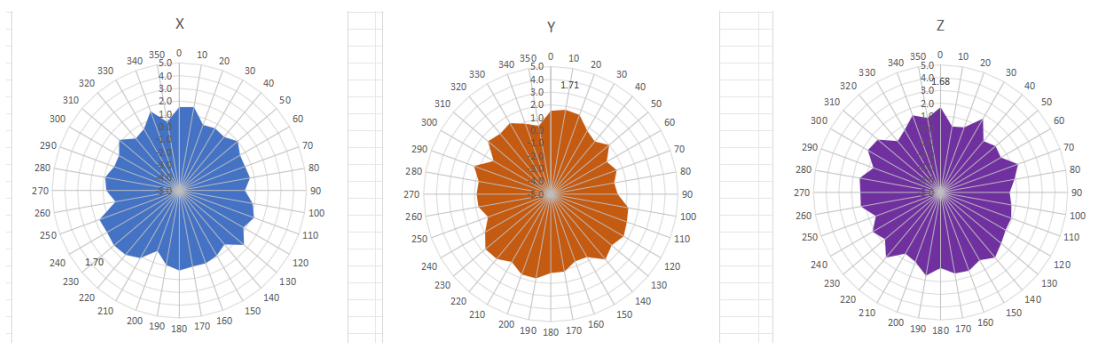


## 4 . Antenna Radiation Pattern

5180MHz



5220MHz



5240MHz

