

Smart Fabric Lamp
(Instruction Manual)



<The picture is for reference only, please refer to the actual product!>

Bluetooth APP

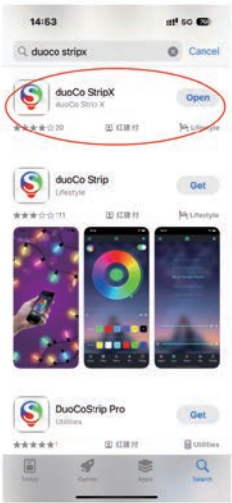
1. Three ways to download the app
1).Scan the QR code(here or on the back of the Mini Controller)



- 2).Use iphone to search for"duoCo StripX" in the AppStore



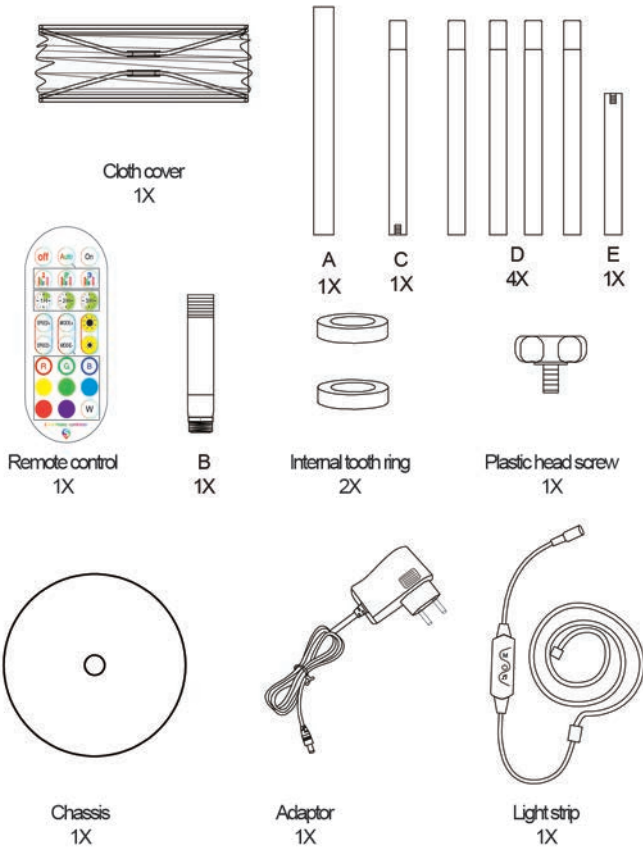
- 3).Use your phone to search for"duoCo StripX" in Google Play



2. Bluetooth connection steps

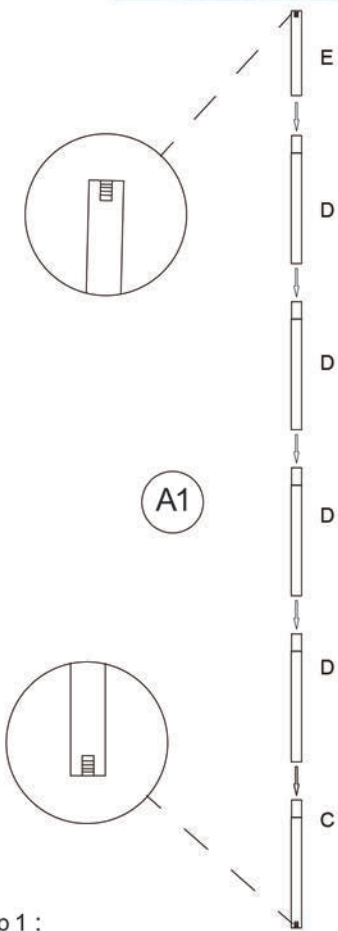
- 1). Turn on Bluetooth, and make sure that your phone's Bluetooth allows this app to be used.
2). Open the APP "duoCo StripX", wait for a few seconds, the light strip will automatically connect to the app.

Packing List



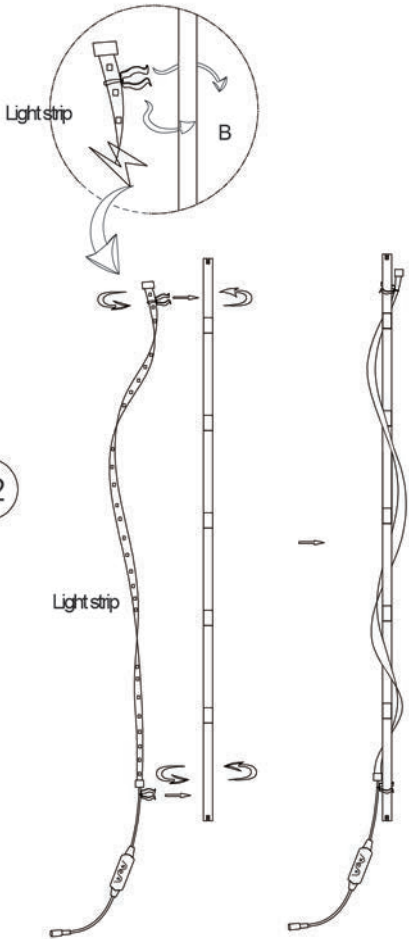
Note: The chassis style is only for demonstration, please refer to the actual product.

Installation Steps



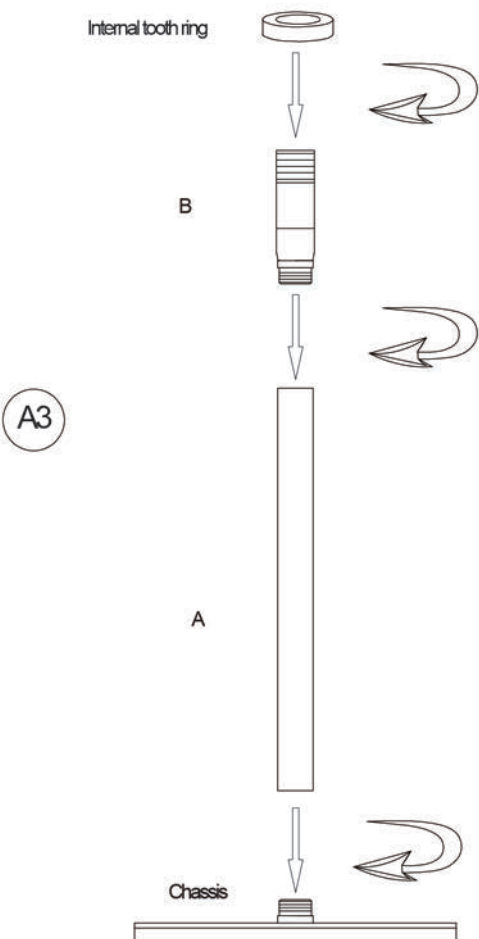
Step 1 :
Each section of the round pipe is connected in turn, as shown in the figure.

3



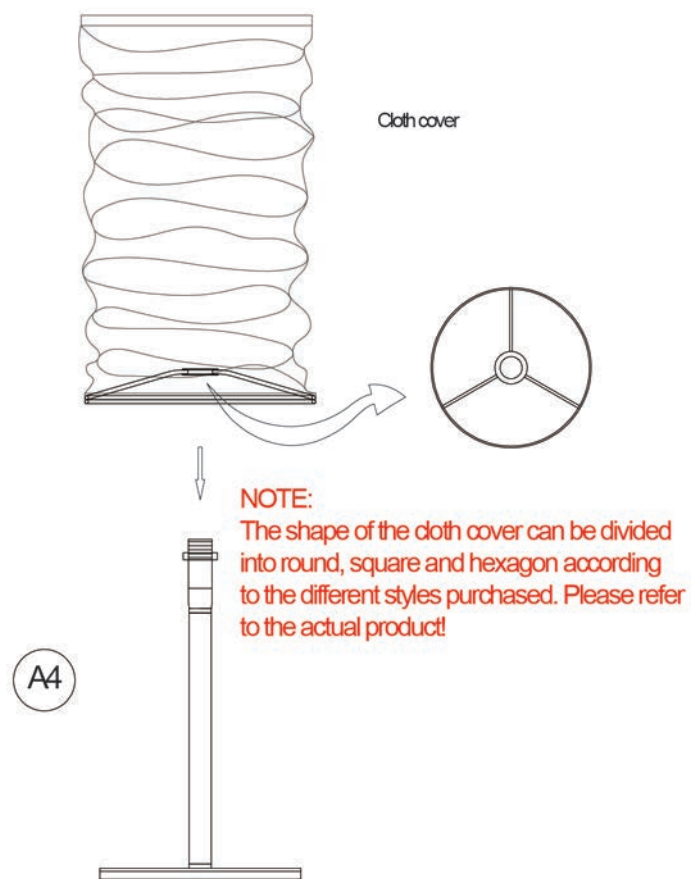
Step 2 :
After wrapping the light strip around the circular tube into a serpentine shape, buckle both ends of the light strip to the circular tube, as shown in the figure.

4



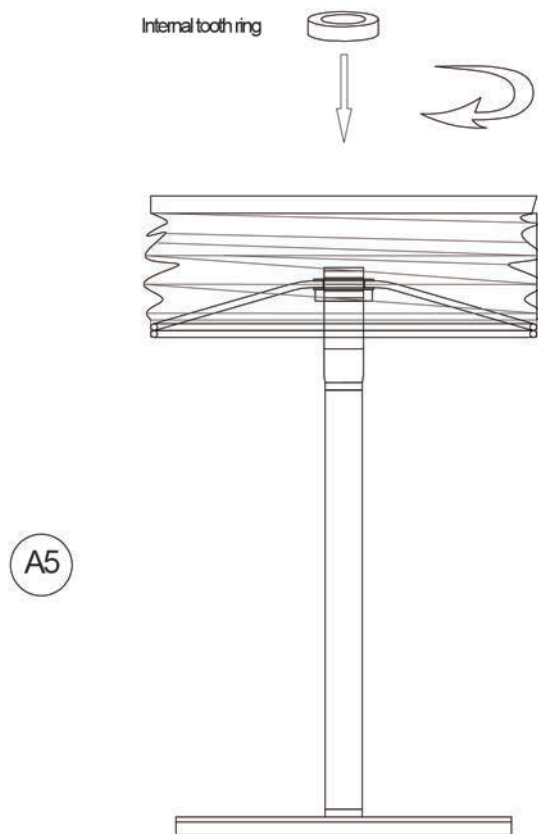
Step 3 :
From bottom to top, install parts one by one, as shown in the figure.

5



Step 4 :
A round hole of the cloth cover is inserted into the thread of the round pipe.

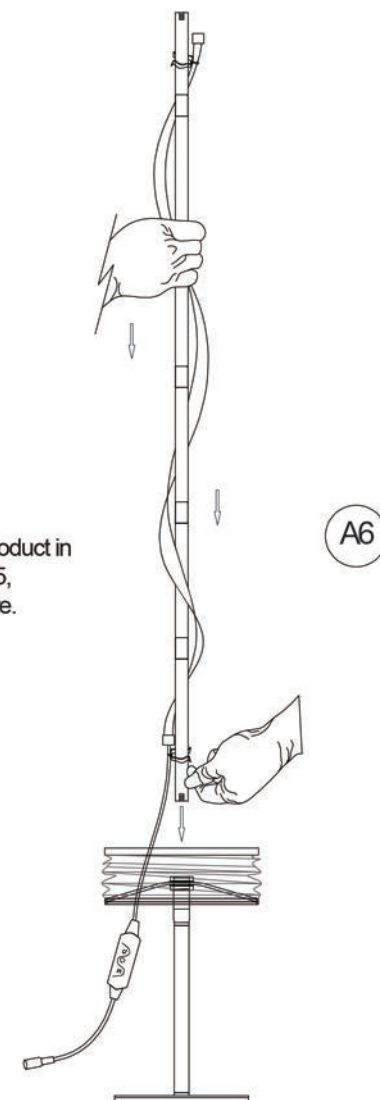
6



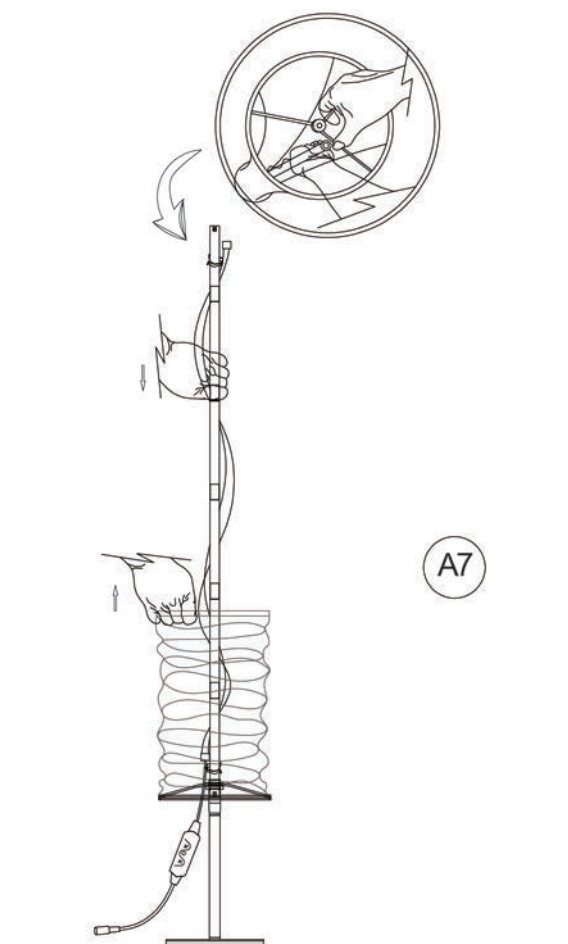
Step 5 :
Using the Internal tooth ring, screw in the 1 B to clamp the bottom of the cloth cover, as shown in the figure.

7

Step 6 :
Install the finished product in step A2 on the of A5, as shown in the figure.



8

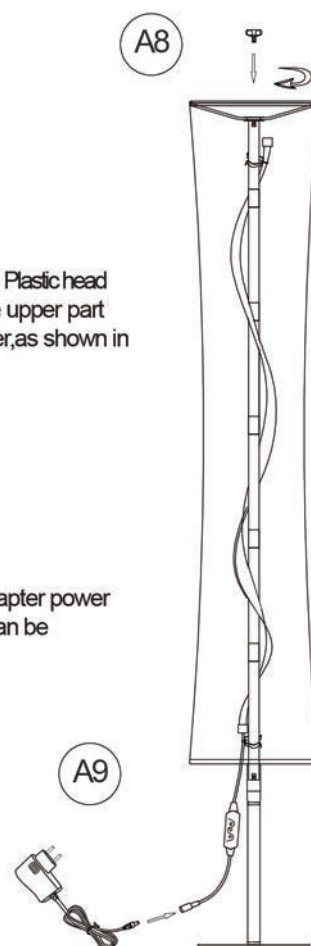


Step 7 :
Pull up the cloth cover until the cloth cover is topped on E.

9

Step 8 :
On the 1 E, use Plastic head screw to lock the upper part of the cloth cover, as shown in the figure.

Step 9 :
Connect the adapter power supply, then it can be powered on.



Note: The adapter style is only for demonstration, please refer to the actual product.

10

FCC Warning

This device complies with Part 15 of the FCC Rules. Operation is subject to the following two conditions:

(1) This device may not cause harmful interference, and (2) this device must accept any interference received, including interference that may cause undesired operation.

NOTE 1: This equipment has been tested and found to comply with the limits for a Class B digital device, pursuant to part 15 of the FCC Rules. These limits are designed to provide reasonable protection against harmful interference in a residential installation. This equipment generates, uses and can radiate radio frequency energy and, if not installed and used in accordance with the instructions, may cause harmful interference to radio communications. However, there is no guarantee that interference will not occur in a particular installation. If this equipment does cause harmful interference to radio or television reception, which can be determined by turning the equipment off and on, the user is encouraged to try to correct the interference by one or more of the following measures:

- Reorient or relocate the receiving antenna.
- Increase the separation between the equipment and receiver.
- Connect the equipment into an outlet on a circuit different from that to which the receiver is connected.
- Consult the dealer or an experienced radio/TV technician for help.

NOTE 2: Any changes or modifications to this unit not expressly approved by the party responsible for compliance could void the user's authority to operate the equipment.

RF Exposure Statement

To maintain compliance with FCC'S RF Exposure guidelines, This equipment should be installed and operated with minimum 20cm between the radiator and your body. This device and its antenna(s) must not be co-located or operation in conjunction with any other antenna or transmitter.