

# User Manual

## Wireless CarPlay Android Auto Adapter 2 in 1



Mobile Phone

Please read the manual carefully before use  
Recommend keeping this manual for future reference

## Compatibility Note

- Please make sure your car supports wired carplay/Android Auto
- Required iPhone6 or later iPhone models with IOS 10 or above for wireless carplay function
- Required an Android smartphone that support latest Android Auto function and with Android 11 or higher of the Android operating system for wireless Android Auto function.

How to confirm if your car has Apple wired CarPlay or Android Auto function

### Method 1:

Connect your iPhone or Android smartphone to your car by USB data cable and see carplay or android auto logo on your car display



### Method 2:

Check the compatible list below or check with your car manufacturer to see if your car has this capability.

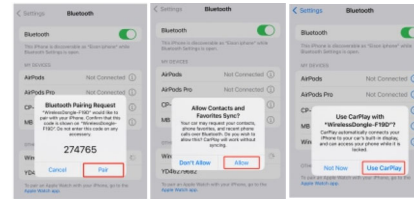
Check out the website for supported car models



1

## How to use

1. Start the car and wait for the car head until system to be loaded
2. Connect the Wireless Carplay Android auto adapter to the USB\_A or USB\_C port in your car please be sure plug the adapter into the port that is for wired apple carplay or android auto.
3. Open WIFI and Bluetooth on your iPhone/Android smartphone and find the BT named "WirelessDongle\_\*\*\*\*". Click on Pair; Click on 'Allow'; Click on 'Use Carplay' or 'Use Android Auto'.



1. Pair Bluetooth
2. Allow contacts and favorites Sync
3. Use CarPlay

4. You are ready to enjoy wireless carplay or wireless Android Auto.

2

## LED Light Description

- Cyan status/Power on indicator
- Green status:  
1/Carplay connecting(green light fast flashing)  
2/Carplay connected(green light slow flashing)
- Blue status:  
1/Android connecting(Blue light fast flashing)  
2/Android connected(Blue light slow flashing)

### Please note

- 1.The wireless Carplay/Android Auto adapter working principle is uses BT to establish a pairing between the iPhone/ Android smartphone and the vehicle, then switches to using WIFI to maintain the wireless connection. After the BT pairing is successful, the iPhone/Android smartphone WIFI will automatically connect to the adapter's WIFI, and then disconnect the Adapter BT connection by default for carplay and automatically connect to your vehicle BT by default for Android auto.
2. Please ensure wireless Carplay/Android auto Adapter power indicates blue light is on.
3. Please ensure that your car models supports wired carplay/Android auto

### Package list

- 1xWireless Adapter
- 1xUser Manual

3

## FQA

### 1.What is the WIFI password for the Wireless Carplay Adapter?

We need to connect the Bluetooth if not WIFI. After BT matching is successful, WIFI will automatically connect, so no need WIFI password. Make sure your WIFI is turned on and unoccupied when pairing.

### 2. After pairing Android Auto adapter, can not start Android Auto function or compatible/ can not recognize the USB...

If your car has used the android auto function for the first time, please use your data cable to connect your phone to activate android auto through a wired method.

2/ Please make sure that android auto on your android phone is the latest version. If not, please log in to your google play account to update to the latest version.

3/ Please turn off the BT of your phone and enter the mobile application management to search auto to clear the auto cache. After the clearing is completed, restart the adapter and reconnect to BT.

### 3.Audio input or output issues : calls rejected or forwarded to voicemail/ no play sound /microphone not working/music playback interrupted or paused /voice functioning abnormally..

1/ Please check if the iPhone/Android smartphone's BT connect to other devices such as EarPhone, watch... If so, please disconnect other autoconnected BT devices or turn off the BT directly for carplay and connect to your vehicle Bluetooth for android auto.

2/ When on a call, check that your "Audio" output option is Carplay/Android Auto.

4

### 4.When use the wireless carplay Android Auto Adapter whether Mobile Phone can use other Internet wifi

When enjoying the wireless android auto adapter function, the phone's WIFI will be occupied by the adapter, so you can not use other Internet at the same time. You only can use your phone 5G/4G card Internet.

### 5.Unable to automatically reconnect

1/ Please make sure that the BT and WIFI functions of your mobile phone are turned on and the Bluetooth is not occupied when you get in the car.

2/ Clear the pairing record, restart the phone and repair the Adapter.

### 6.Can the adapter be paired with multiple phones

The adapter can be paired with maximum five phones, but only one device can be connected at a time. If you would like to pair it with a new phone, please cancel the current connection first. Please note: by BT function default, the adapter's system will only autoconnect back to the last used phone.

### 7.Can't find the bluetooth and Wi-Fi of the wireless Carplay Android Auto Adapter ?

Please make sure wireless Carplay/Android auto adapter power indicates blue light is on and the same plug the adapter into the port that is for wired carplay/ Android auto.

If convenient, Please test it with another Phone. If only a specific phone cannot find the BT or Wi-Fi of the adapter, please try to reset the network and Bluetooth settings of this Phone and then restart the phone once. If the same problem happens on other Phone, it will be defective. Please let us know.

### 8.Whether Wireless Carplay Android auto Adapter support Youtube Video

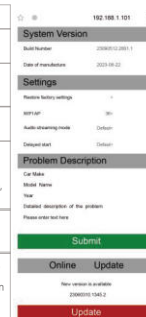
For driving safety, CarPlay and Android Auto do not allow the use of video playback.

5

## Online update

- the adapter works properly, it means the current version is suitable for your car. It is not recommended to update the firmware
- Only try this solution when the problem you cannot solve from the "FQA"

- 1.Power up the adapter
- 2.Connect the adapter's WIFI the password is "12345678"
- 3.Open web browser and enter "192.168.1101" to enter the setting page and click "Online Update" for Car-play function
4. For Android auto, Please Click "Switch P2P" Then Click "OK"
- 5.Return to WIFI Connect, Find Wi-Fi Direct\* option. Then connect the Available devices (Smart Adapter\*\*\*\*) (This step is for reference only for Android phone users. If the phone users use phone update the firmware, please ignore "Wi-Fi Direct step")
- 6.Return to the browser's page Click "Update" (PS: the signal light of will flash when it reached 70%, and it will return to normal after successful)
- 7.On the same page, you could also fill in the car brand, model, years, and more details, next tap "Submit to report the issue. Our engineers will record your problem and research possible solutions



6

MADE IN CHINA

## FCC Statement

This equipment has been tested and found to comply with the limits for a Class B digital device, pursuant to part 15 of the FCC Rules. These limits are designed to provide reasonable protection against harmful interference in a residential installation. This equipment generates, uses and can radiate radio frequency energy and, if not installed and used in accordance with the instructions, may cause harmful interference to radio communications. However, there is no guarantee that interference will not occur in a particular installation. If this equipment does cause harmful interference to radio or television reception, which can be determined by turning the equipment off and on, the user is encouraged to try to correct the interference by one or more of the following measures:

- Reorient or relocate the receiving antenna.
- Increase the separation between the equipment and receiver.
- Connect the equipment into an outlet on a circuit different from that to which the receiver is connected.
- Consult the dealer or an experienced radio/TV technician for help.

Caution: Any changes or modifications to this device not explicitly approved by manufacturer could void your authority to operate this equipment.

This device complies with part 15 of the FCC Rules. Operation is subject to the following two conditions: (1) This device may not cause harmful interference, and (2) this device must accept any interference received, including interference that may cause undesired operation.

### RF Exposure Information

This equipment complies with FCC radiation exposure limits set forth for an uncontrolled environment. This equipment should be installed and operated with minimum distance 20cm between the radiator and your body.

This transmitter must not be co-located or operating in conjunction with any other antenna or transmitter.