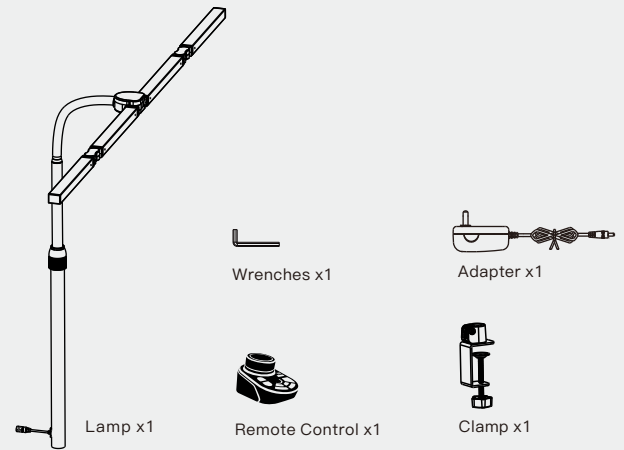


# LED Desk Lamp

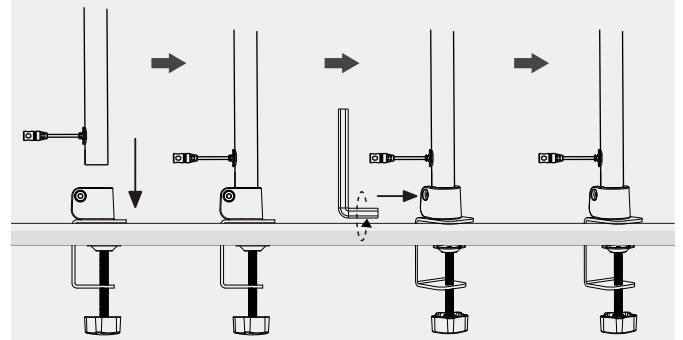
CLED-6103C



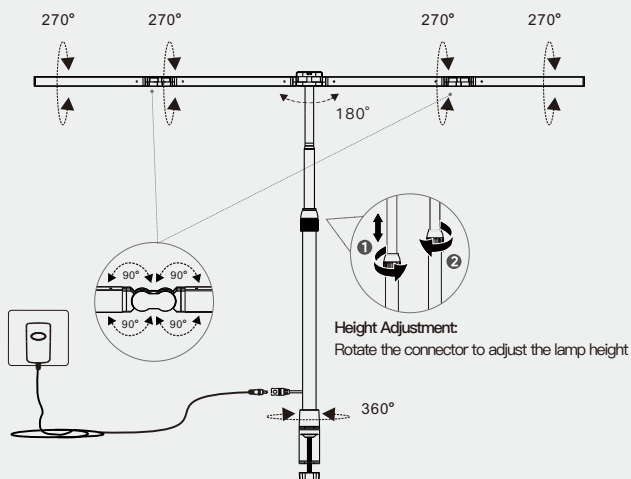
## Product Accessories



## Clamp Installation Steps



## Getting To Know Desk Lamp

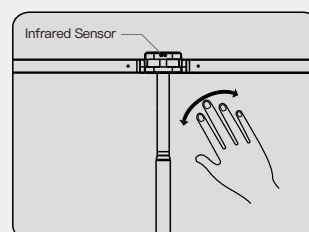
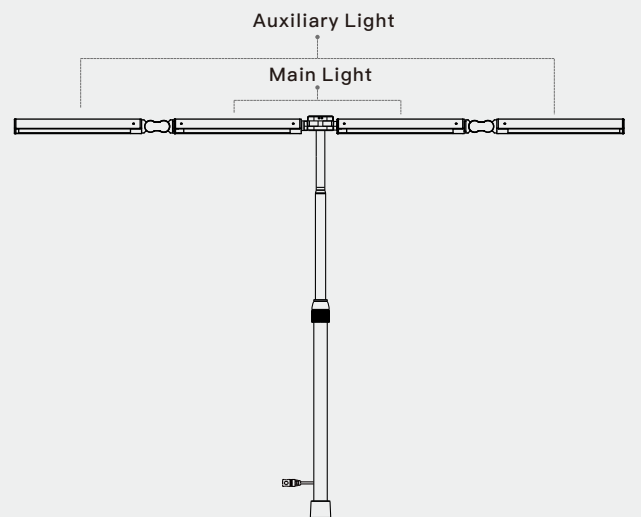


## Specification

Lamp Power :	24W Max
Input :	AC 100V-240V 50/60Hz
Output :	DC 24V $\equiv$ 1A
Color temperature :	3000K $\pm$ 10% - 6500K $\pm$ 10%
Lumens:	1100 lm $\pm$ 5%
Lifespan :	6000-50000Hours

## Using Your Desk Lamp

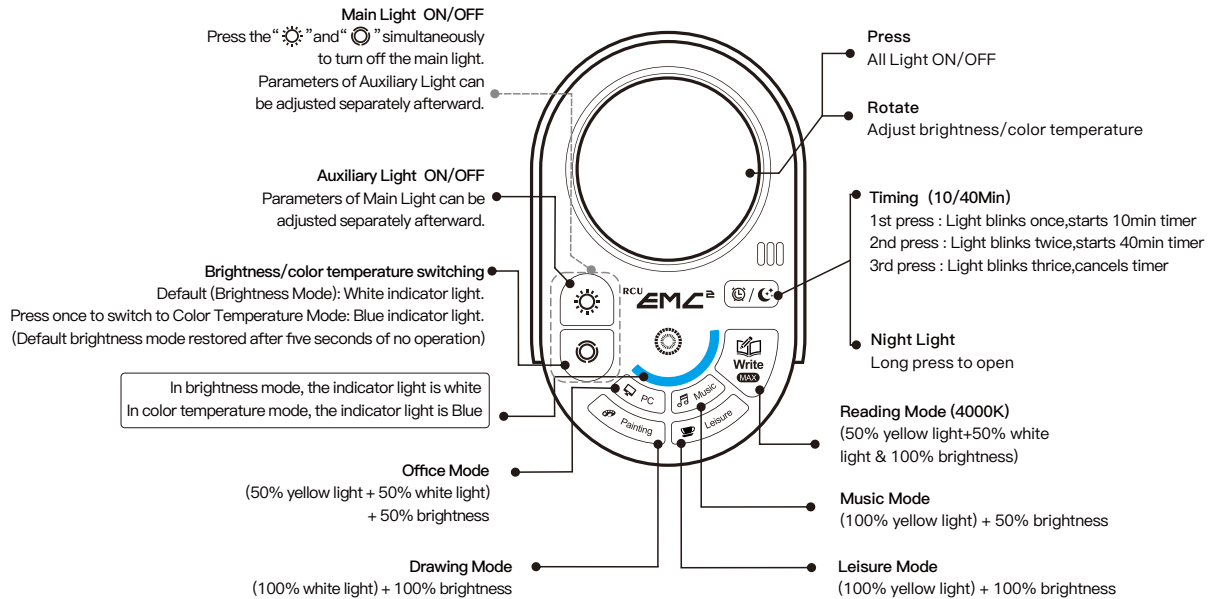
This lamp is designed with memory function. It will always remember your last settings (brightness & color temperature) once you turn it on again.



### Gesture Control

Wave hand to turn on/off the light.  
(Note: Too fast or too slow hand movements may affect sensor performance.)

# Using Your Remote Control



## Remote control pairing:

If the remote control does not work properly, unplug it from the power source and reconnect it to the power source. Press both buttons ☀️ + 🌙 on the remote control at the same time within 15 seconds. If you see the light blinking, the remote control is matched successfully.

# Troubleshooting Guide

The troubleshooting guide addresses the most common problems. If problems persist, Please feel free to contact us

Problem	Solution
My Lamp does not light up or turn off suddenly.	<ul style="list-style-type: none"><li>• Make sure the lamp is properly connected to the electrical outlet with the included power adapter.</li><li>• If problem persists, please contact Customer Support for Help.</li></ul>
Wireless remote control does not work.	<ul style="list-style-type: none"><li>• Check if the battery is installed led correctly.</li><li>• Replace the battery with a new one.</li><li>• To re-pair the remote control, unplug the power and then plug it back in. Press both buttons "☀️" + "🌙" on the remote control at the same time within 15s after powered on until the lamp flashes, indicating a successful pairing.</li></ul>
LED failure or bad smell.	<ul style="list-style-type: none"><li>• Please contact Customer Support for Help.</li></ul>

## Questions or Concerns?

sandroy189@163.com

Manufacturer: Jiangsu Yuandao Network Technology Co., Ltd  
Address: No.1, Feilong Road, Zhonglou District, Changzhou City, Jiangsu Province, China

IP 20



Made in China



To ensure correct installation and function, always follow these instructions.



Use ONLY the provided power adapter.



DO NOT dismantle or modify by yourself. Always ask authorized person for repair.



DO NOT place or operate near extreme heat sources, moisture, or corrosive substances.



DO NOT operate with a damaged cord or after malfunction occurs, or damaged in any manner.



DO NOT remove the power plug with wet hands as it may cause electrical shock.



Always unplug the lamp prior to installation, maintenance or carrying out any repair activities.



Follow local regulations regarding disposal or recycling of the device and components.



Any other problems during use, contact our Customer Support for help.

## IMPORTANT SAFETY INSTRUCTIONS

Read All Instructions Before Use And Save For Future Reference

This is an electric lamp – not a toy. To avoid risk of fire, burns, personal injury and electric shock it should not be played with or placed where small children can reach it.

### FCC STATEMENT

This device complies with Part 15 of the FCC Rules. Operation is subject to the following two conditions:

(1) This device may not cause harmful interference, and (2) This device must accept any interference received, including interference that may cause undesired operation.

Changes or modifications not expressly approved by the party responsible for compliance could void the user's authority to operate the equipment.