

Operating Instructions



Please read all operating instructions before installing and operating the system.

Keep the manual for future reference.

Parameter

Product Information

● Operating Temperature:-40°C~65°C

Lamp function	SMD	LED Q'TY (pcs)	Input Voltage	LED color
Tail Lamp	2835	48	12V-24V	●
Stop/Brake	2835	22	12V-24V	●
Direction Indicator Lamp	2835	22	12V-24V	●
Reversing Lamp	2835	7	12V-24V	○
Warning Light	2835	7	12V-24V	●

Charging interface: TYPE-C

Electric core: Single section 18650 lithium ion

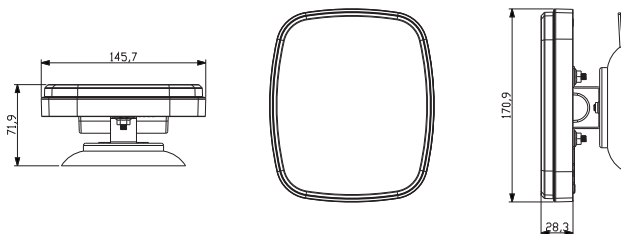
Capacity: 3.7-4.2V 2600mAh

Charging voltage: 5V

Charging current: 2200mA

Overcharge, over discharge, over temperature protection

[mm]



Installation



WARNING LAMP SWITCH BUTTON

TURN ON: Short press one time, warning lamp is on.

MODE SWITCHING: After turning on the device, each short press to the next flashing mode.

TURN OFF: Long press three seconds warning lamp off.



SIGNAL LAMP SWITCH BUTTON

TURN ON: Short press one time; switch on indicator is on, means it's working now, meanwhile power indicator will be light up, then off after 40 seconds. lamp is on.

TURN OFF: Short press again. The switch on indicator turn off, means stop working, meanwhile power indicator will be light up, then off after 40 seconds.

SIGNAL LAMP SWITCH ON INDICATOR (WHITE)

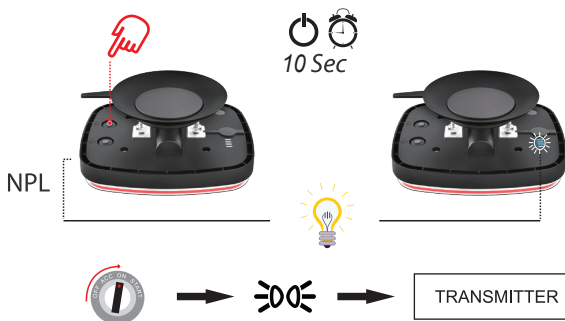
THREE LEVEL POWER INDICATOR (BLUE)



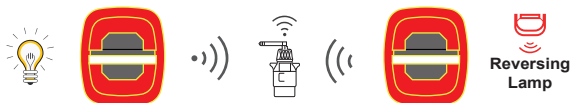
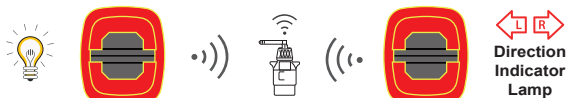
TYPE-C



Pairing



Text



Charging

1.5 hours



Battery  100%

 3%

Battery Life

Model	Battery Capacity	Working Hours
All Lamp On	2200mAh	1 hour 30 minutes
Tail Lamp On	2200mAh	12 hours
Warning Lamp On	2200mAh	12 hours
Tail Lamp+Stop/Brake On	2200mAh	3 hours



1. Fully charge battery before using
2. Check the battery before using
3. Check lights if work correctly before using
4. Charge the battery every 6 months if not in using
5. Charge lights regularly when use for long term

When use the lights on the road, please ensure to connect them to vehicle power supply.
When run on battery only, it applies for cases of emergency.

Mount



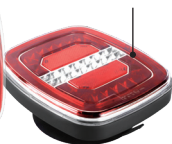
MAGNETIC MOUNT

Contents

Left lamp



Right lamp



Packing box



Charging cord



USB adaptor



Transmitters

Packing box x 1
Left lamp x 1
Right lamp x 1
USB adaptor x 1
Charging cord x 1
Transmitters x1

This device complies with Part 15 of the FCC Rules. Operation is subject to the following two conditions: (1) this device may not cause harmful interference, and (2) this device must accept any interference received, including interference that may cause undesired operation.

Changes or modifications to this unit not expressly approved by the party responsible for compliance could void the user's authority to operate the equipment.

NOTE: This equipment has been tested and found to comply with the limits for a Class B digital device, pursuant to Part 15 of the FCC Rules. These limits are designed to provide reasonable protection against harmful interference in a residential installation. This equipment generates uses and can radiate radio frequency energy and, if not installed and used in accordance with the instructions, may cause harmful interference to radio communications. However, there is no guarantee that interference will not occur in a particular installation. If this equipment does cause harmful interference to radio or television reception, which can be determined by turning the equipment off and on, the user is encouraged to try to correct the interference by one or more of the following measures:

- Reorient or relocate the receiving antenna.
- Increase the separation between the equipment and receiver.
- Connect the equipment into an outlet on a circuit different from that to which the receiver is connected.
- Consult the dealer or an experienced radio/TV technician for help.

This device and its antenna(s) must not be co-located or operation in conjunction with any other antenna or transmitter.

Radiation Exposure Statement

To maintain compliance with FCC's RF Exposure guidelines, This equipment should be installed and operated with minimum distance of 20cm from your body.