

SPECIFICATION

Shenzhen Guandetong Electronic Limited

*Shenzhen Guandetong Electronic Co., Ltd.*

4G white antenna L=250MM with IPEX connector (waterproof ring wire diameter
1.0MM)

Product Specification

connection		frequency range	690-960MHz 1710-2690MHZ
Frequency band wire name		edition	A1
Customer part number		Guandetong part number	
Guandetong No			
R F design	肖彬	RF Manager	刘亮
Structural design	王栋	Structure Manager	王华
Technical Director	叶定坤	Date	2025-3-26

Customer confirmation:

Does the assembly meet your company's requirements: ☐OK ☐NG

Confidentiality requirements of Shenzhen Guande tong Electronic Co. , Ltd. . The company has proprietary technology to provide the information, which should be strictly confidential, it shall not be disclosed to any person or company without the prior written consent of Shenzhen Guande tong Electronic Co. , Ltd. .

catalogue

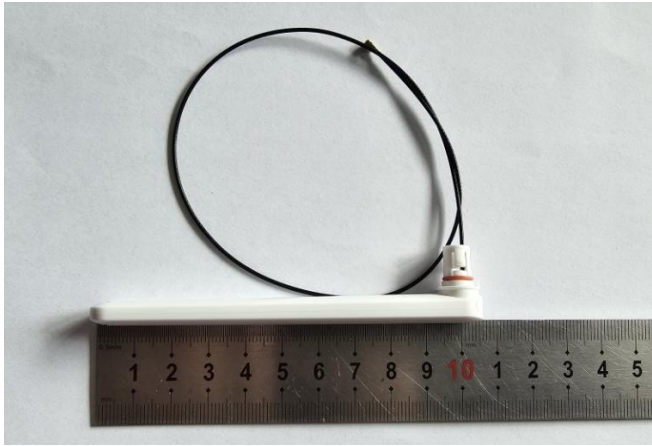
Cover	1
catalogue.....	2
一、 Product pictures	3
二、 Product parameters	3
三、 S11(VSWR、 Return、 Smith)	4
四、 Structural drawings.....	4
五、 Antenna gain and efficiency.....	5
六、 2D&3D images.....	6-7
七、 Environmental performance test.....	7

Address: 3/F, Tower D, Huanguan Nanmaoyuan Industrial Park, Guanhu Street, Longhua District, Shenzhen. Tel: 0755-88298396 fax: 0755-89733896

<http://www.szgdtrf.com>

Confidentiality requirements of Shenzhen Guande tong Electronic Co. , Ltd. . The company has proprietary technology to provide the information, which should be strictly confidential, it shall not be disclosed to any person or company without the prior written consent of Shenzhen Guande tong Electronic Co. , Ltd. .

一、 Product pictures



二、 Product parameters

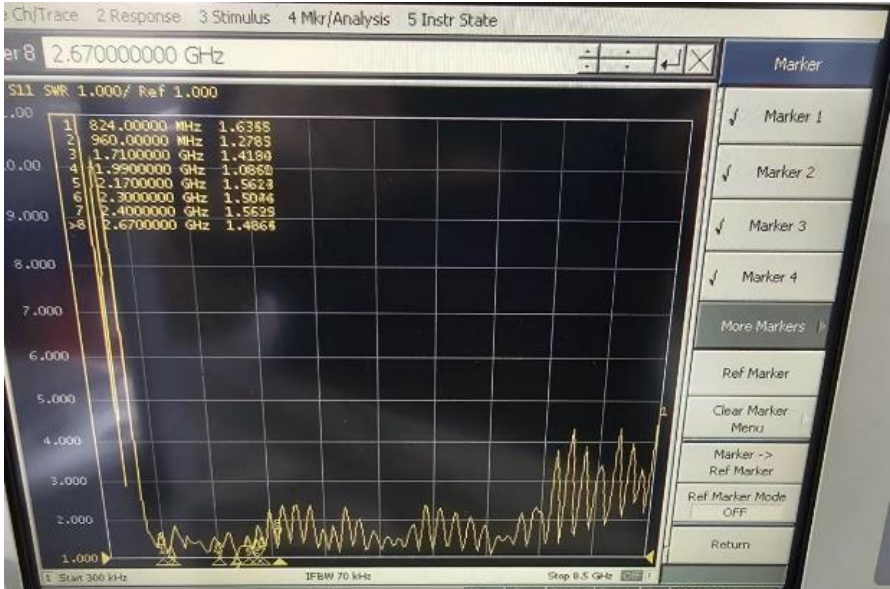
Product testing parameters			
Product name	4G antenna	(Model Type)	
(Electrical Specifications)			
(Frenquency Range)	690-960MHZ 1710-2690MHZ	(Polarization)	perpendicular
(Impedance)	50Ω	Radiation	QXCOMM
(VSWR)	≦3.0	(Power)	50W
(Gain)	3dBi	(Bandwidth	136/980MHZ
(Mechanical Specifications)			
(Dimensions)	104.7*12.8-+0.3mm	(Chassis Color)	White
(Connector)	IPEX	(Cable Length)	250±3MM
(Chassis Material)	ABS	Wire color	1.13 Black
(Working Temperature)	-40℃ -+85℃	(Limit Temperature)	-40℃ -+85℃

Address: 3/F, Tower D, Huanguan Nanmaoyuan Industrial Park, Guanhu Street, Longhua District, Shenzhen. Tel: 0755-88298396 fax: 0755-89733896

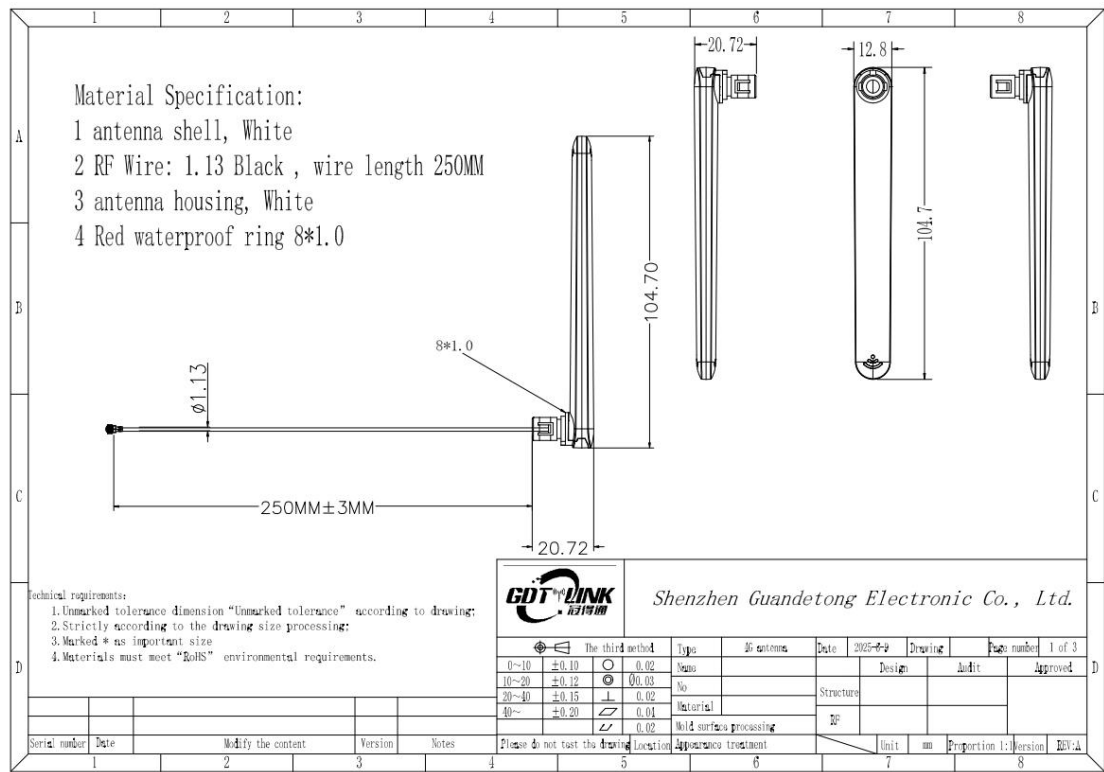
<http://www.szgdtrf.com>

Confidentiality requirements of Shenzhen Guande tong Electronic Co. , Ltd. . The company has proprietary technology to provide the information, which should be strictly confidential, it shall not be disclosed to any person or company without the prior written consent of Shenzhen Guande tong Electronic Co. , Ltd. .

三、S11(VSWR、Return、Smith)



四、Structural drawings



Address: 3/F, Tower D, Huanguan Nanmaoyuan Industrial Park, Guanhu Street, Longhua District, Shenzhen. Tel: 0755-88298396 fax: 0755-89733896

<http://www.szgdt rf.com>

Confidentiality requirements of Shenzhen Guande tong Electronic Co. , Ltd. . The company has proprietary technology to provide the information, which should be strictly confidential, it shall not be disclosed to any person or company without the prior written consent of Shenzhen Guande tong Electronic Co. , Ltd. .

五、Antenna gain and efficiency

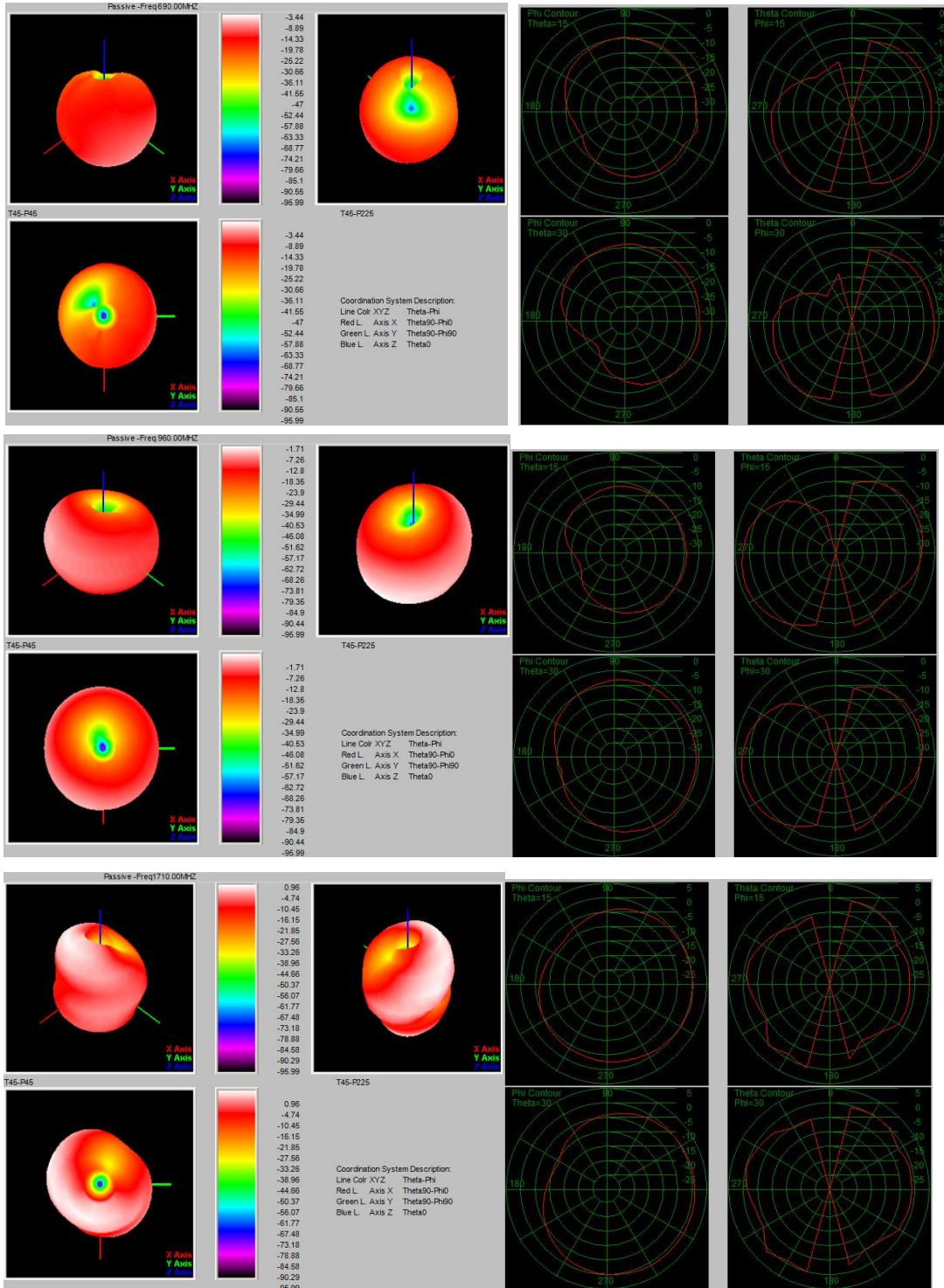
Test Point ID	Freq. (MHz)	TRP (dBm)	Gain (dBi)	Directivity (dBi)	Efficiency (%)	Efficiency (dB)	Max (dBm)	Theta of Max	Phi of Max	Min (dBm)	Theta of Min	Phi of Min	AVG (dBm)	Max/Min (dB)	Max/AVG (dB)	Min/AVG (dB)
1	690.0	690.00	-3.44	5.87	11.7%	-9.32	-3.44	150	135	-95.99	0	0	-8.13	92.54	4.69	-87.86
2	720.0	720.00	-4.29	4.57	13.0%	-8.87	-4.29	150	120	-95.99	0	0	-8.45	91.70	4.15	-87.54
3	740.0	740.00	-5.24	4.20	11.4%	-9.43	-5.24	135	135	-95.99	0	0	-8.90	90.75	3.67	-87.09
4	760.0	760.00	-5.29	4.09	11.5%	-9.37	-5.29	105	180	-95.99	0	0	-9.26	90.70	3.97	-86.73
5	780.0	780.00	-4.86	3.79	13.7%	-8.65	-4.86	105	180	-95.99	0	0	-9.20	91.13	4.34	-86.79
6	800.0	800.00	-3.40	4.06	18.0%	-7.46	-3.40	105	180	-95.99	0	0	-7.98	92.59	4.58	-88.01
7	820.0	820.00	-2.38	4.10	22.5%	-6.48	-2.38	105	180	-95.99	0	0	-6.91	93.61	4.53	-89.08
8	840.0	840.00	-1.89	4.17	24.8%	-6.06	-1.89	105	180	-95.99	0	0	-6.68	94.10	4.80	-89.31
9	860.0	860.00	-1.78	3.91	26.9%	-5.70	-1.78	105	180	-95.99	0	0	-6.45	94.21	4.67	-89.54
10	880.0	880.00	-1.55	3.54	31.0%	-5.09	-1.55	105	180	-95.99	0	0	-6.26	94.44	4.71	-89.73
11	900.0	900.00	-1.08	3.91	31.7%	-5.00	-1.08	105	180	-95.99	0	0	-5.85	94.91	4.77	-90.14
12	920.0	920.00	-1.32	3.89	30.1%	-5.21	-1.32	105	180	-95.99	0	0	-5.88	94.67	4.56	-90.11
13	940.0	940.00	-1.44	3.99	28.7%	-5.42	-1.44	105	180	-95.99	0	0	-5.92	94.55	4.49	-90.07
14	960.0	960.00	-1.71	4.19	25.7%	-5.90	-1.71	105	195	-95.99	0	0	-6.36	94.28	4.64	-89.63
15	1710.0	1710.00	0.96	4.35	45.8%	-3.39	0.96	135	225	-95.99	0	0	-2.96	96.95	3.91	-93.03
16	1730.0	1730.00	1.27	4.45	48.0%	-3.18	1.27	135	225	-95.99	0	0	-2.71	97.25	3.97	-93.28
17	1750.0	1750.00	1.14	4.28	48.5%	-3.14	1.14	30	345	-95.99	0	0	-2.95	97.13	4.09	-93.03
18	1770.0	1770.00	2.07	4.94	51.6%	-2.87	2.07	30	345	-95.99	0	0	-2.44	98.06	4.51	-93.55
19	1790.0	1790.00	2.77	5.43	54.2%	-2.66	2.77	30	345	-95.99	0	0	-1.99	98.76	4.77	-93.99
20	1810.0	1810.00	2.55	4.86	58.7%	-2.31	2.55	30	345	-95.99	0	0	-2.16	98.54	4.71	-93.83
21	1830.0	1830.00	2.19	4.78	55.1%	-2.59	2.19	30	345	-95.99	0	0	-2.54	98.18	4.73	-93.45
22	1850.0	1850.00	2.23	4.86	54.5%	-2.63	2.23	30	0	-95.99	0	0	-2.52	98.22	4.75	-93.47
23	1870.0	1870.00	2.58	5.25	54.1%	-2.67	2.58	30	0	-95.99	0	0	-2.17	98.57	4.75	-93.82
24	1890.0	1890.00	2.33	5.03	53.6%	-2.71	2.33	30	345	-95.99	0	0	-2.30	98.32	4.63	-93.69
25	1910.0	1910.00	2.07	4.75	54.0%	-2.68	2.07	30	15	-95.99	0	0	-2.29	98.06	4.36	-93.70
26	1930.0	1930.00	2.30	4.87	55.3%	-2.57	2.30	60	255	-95.99	0	0	-2.26	98.29	4.56	-93.73
27	1950.0	1950.00	2.02	4.72	53.7%	-2.70	2.02	60	255	-95.99	0	0	-2.48	98.01	4.51	-93.51
28	1970.0	1970.00	1.87	4.79	51.1%	-2.92	1.87	30	345	-95.99	0	0	-2.58	97.86	4.45	-93.41
29	1990.0	1990.00	2.12	4.79	54.0%	-2.68	2.12	30	345	-95.99	0	0	-2.27	98.11	4.38	-93.72
30	2010.0	2010.00	1.40	4.55	48.5%	-3.14	1.40	60	255	-95.99	0	0	-2.88	97.39	4.29	-93.11
31	2030.0	2030.00	0.85	4.44	43.7%	-3.59	0.85	60	255	-95.99	0	0	-3.64	96.84	4.49	-92.35
32	2050.0	2050.00	0.60	4.60	39.8%	-4.00	0.60	60	255	-95.99	0	0	-3.80	96.59	4.40	-92.19
33	2070.0	2070.00	1.11	4.80	42.8%	-3.69	1.11	60	240	-95.99	0	0	-3.21	97.10	4.32	-92.78
34	2090.0	2090.00	1.03	4.71	42.9%	-3.67	1.03	60	240	-95.99	0	0	-3.43	97.02	4.47	-92.55
35	2110.0	2110.00	0.75	4.28	44.4%	-3.53	0.75	60	240	-95.99	0	0	-3.64	96.74	4.39	-92.35
36	2130.0	2130.00	0.79	4.28	44.8%	-3.49	0.79	60	240	-95.99	0	0	-3.55	96.78	4.34	-92.44
37	2150.0	2150.00	1.18	4.55	46.1%	-3.36	1.18	60	240	-95.99	0	0	-3.32	97.17	4.51	-92.66
38	2170.0	2170.00	1.15	4.52	46.0%	-3.37	1.15	60	240	-95.99	0	0	-3.53	97.14	4.68	-92.46
39	2190.0	2190.00	1.09	4.44	46.2%	-3.35	1.09	60	240	-95.99	0	0	-3.59	97.08	4.68	-92.40
40	2210.0	2210.00	1.14	4.65	44.6%	-3.51	1.14	60	240	-95.99	0	0	-3.47	97.13	4.61	-92.52
41	2230.0	2230.00	0.92	4.76	41.4%	-3.83	0.92	60	240	-95.99	0	0	-3.68	96.91	4.60	-92.31
42	2250.0	2250.00	0.00	4.51	35.4%	-4.51	0.00	60	255	-95.99	0	0	-4.56	95.99	4.56	-91.43
43	2270.0	2270.00	0.17	4.78	34.6%	-4.61	0.17	60	255	-95.99	0	0	-4.43	96.16	4.59	-91.56
44	2290.0	2290.00	-0.26	4.27	35.2%	-4.53	-0.26	60	255	-95.99	0	0	-4.97	95.73	4.72	-91.02
45	2310.0	2310.00	-0.85	4.26	30.9%	-5.10	-0.85	60	255	-95.99	0	0	-5.77	95.14	4.92	-90.22
46	2330.0	2330.00	0.03	4.80	33.3%	-4.77	0.03	60	255	-95.99	0	0	-5.19	96.02	5.22	-90.80
47	2350.0	2350.00	1.01	5.41	36.3%	-4.40	1.01	60	255	-95.99	0	0	-4.52	97.00	5.53	-91.47
48	2370.0	2370.00	0.93	5.35	36.2%	-4.42	0.93	60	255	-95.99	0	0	-4.72	96.92	5.66	-91.26
49	2390.0	2390.00	1.03	5.51	35.7%	-4.48	1.03	60	255	-95.99	0	0	-4.61	97.02	5.64	-91.38
50	2410.0	2410.00	1.64	5.87	37.7%	-4.23	1.64	60	255	-95.99	0	0	-3.91	97.63	5.55	-92.08
51	2430.0	2430.00	2.46	6.18	42.4%	-3.72	2.46	60	240	-95.99	0	0	-2.96	98.45	5.42	-93.03
52	2450.0	2450.00	2.11	5.89	41.9%	-3.78	2.11	60	240	-95.99	0	0	-3.08	98.10	5.19	-92.91
53	2470.0	2470.00	1.97	5.38	45.5%	-3.42	1.97	60	240	-95.99	0	0	-2.94	97.96	4.91	-93.05
54	2490.0	2490.00	1.41	4.71	46.7%	-3.30	1.41	60	240	-95.99	0	0	-3.28	97.40	4.69	-92.71
55	2510.0	2510.00	1.71	4.59	51.5%	-2.88	1.71	30	315	-95.99	0	0	-2.84	97.70	4.55	-93.15
56	2530.0	2530.00	2.17	5.04	51.6%	-2.87	2.17	30	300	-95.99	0	0	-2.55	98.16	4.72	-93.44
57	2550.0	2550.00	2.84	5.46	54.7%	-2.62	2.84	30	300	-95.99	0	0	-2.08	98.83	4.92	-93.91
58	2570.0	2570.00	2.67	5.53	51.8%	-2.86	2.67	30	300	-95.99	0	0	-2.33	98.66	5.00	-93.66
59	2590.0	2590.00	1.87	4.78	51.2%	-2.91	1.87	30	300	-95.99	0	0	-3.07	97.86	4.94	-92.92
60	2610.0	2610.00	2.15	5.13	50.3%	-2.98	2.15	30	285	-95.99	0	0	-2.72	98.14	4.87	-93.27
61	2630.0	2630.00	1.45	4.92	45.0%	-3.46	1.45	30	285	-95.99	0	0	-3.46	97.44	4.91	-92.53
62	2650.0	2650.00	1.12	4.89	41.9%	-3.77	1.12	30	285	-95.99	0	0	-3.72	97.11	4.84	-92.27
63	2670.0	2670.00	0.98	4.77	41.8%	-3.79	0.98	30	300	-95.99	0	0	-3.84	96.97	4.82	-92.15
64	2690.0	2690.00	1.05	4.64	43.8%	-3.59	1.05	30	285	-95.99	0	0	-3.76	97.04	4.82	-92.23

Address: 3/F, Tower D, Huanguan Nanmaoyuan Industrial Park, Guanhu Street, Longhua District, Shenzhen. Tel: 0755-88298396 fax: 0755-89733896

<http://www.szgdtrf.com>

Confidentiality requirements of Shenzhen Guande tong Electronic Co. , Ltd. . The company has proprietary technology to provide the information, which should be strictly confidential, it shall not be disclosed to any person or company without the prior written consent of Shenzhen Guande tong Electronic Co. , Ltd. .

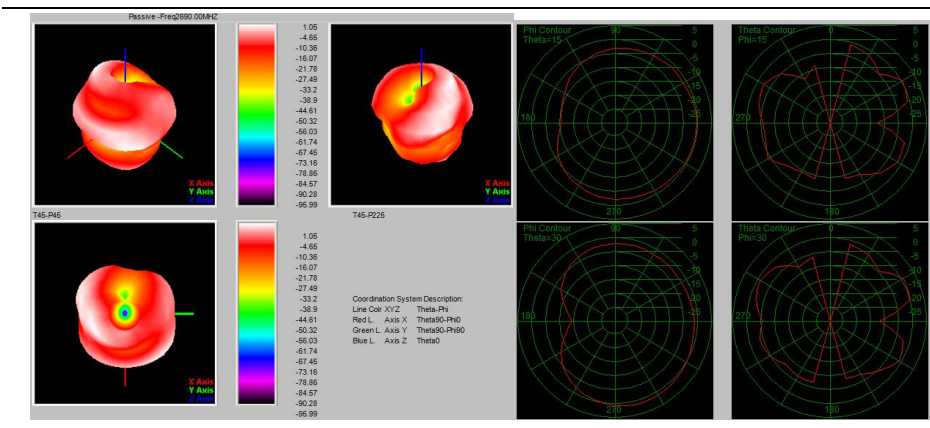
六、2D&3D images



Address: 3/F, Tower D, Huanguan Nanmaoyuan Industrial Park, Guanhu Street, Longhua District, Shenzhen. Tel: 0755-88298396 fax: 0755-89733896

<http://www.szgdtrf.com>

Confidentiality requirements of Shenzhen Guande tong Electronic Co. , Ltd. . The company has proprietary technology to provide the information, which should be strictly confidential, it shall not be disclosed to any person or company without the prior written consent of Shenzhen Guande tong Electronic Co. , Ltd. .



七、 Environmental performance test

project	Project test conditions	Specificat ions
Storage environment	<p>The test temperature, humidity and air pressure are as follows when there is no specific condition:</p> <ol style="list-style-type: none">1. The temperature is - 30 ℃~+80 ℃2. Relative humidity: 45% - 85%3. The air pressure is 86kpa-106kpa	Normal electrical and mechanical performance
High and low temperature test	<p>5 cycles between 70 ° C and 40 ° C, then under normal conditions1-2H, check the appearance quality.</p>	<p>The size shall meet the requirements and</p> <p>Mechanical and electrical performance</p>
Constant damp heat resistance test	<p>Relative humidity: 95 ± 3%, test temperature: 40 ℃. After lasting for 2h,</p> <p>The electrical performance shall be measured within 5 minutes after the test object is taken out, and the test object shall be within the normal range</p> <p>Part 1-2H, check the appearance quality</p>	<p>The size shall meet the requirements and</p> <p>Mechanical and electrical performance</p>
vibration test	<p>Vibration frequency range: 10-55HZ, displacement amplitude: 0.35MM, acceleration amplitude: 50.0M/s, frequency sweep cycles: 30 times</p>	Normal electrical and mechanical performance
Drop test	<p>Free fall for 3 times in the direction of mutually perpendicular axes at a height of 1M</p>	Normal electrical and mechanical performance

Address: 3/F, Tower D, Huanguan Nanmaoyuan Industrial Park, Guanhu Street, Longhua District, Shenzhen. Tel: 0755-88298396 fax: 0755-89733896

<http://www.szgdtrf.com>