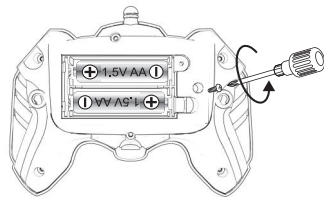


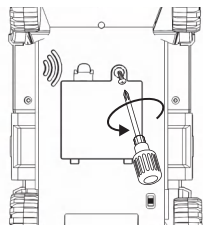
《《 MILITARY TRUCK INSTRUCTIONS 》》

REMOTE CONTROL INSTRUCTIONS

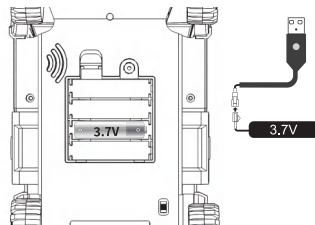


Unscrew the remote control battery compartment cover with a screwdriver and use two 1.5V "AA" non-rechargeable batteries (not supplied).

ASSEMBLE THE BATTERY

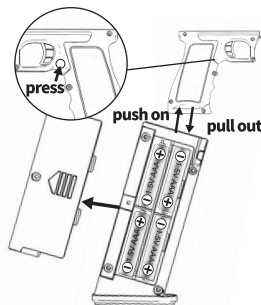


Use a screwdriver to unscrew the battery cover screws on the back of the RC car and open the battery compartment cover.



Built-in 3.7V rechargeable lithium battery.

BATTERY ASSEMBLY & TWO MODES



Press the button to push out the battery case, pull down the battery compartment on the handle of the gun, unscrew the battery compartment cover with a screwdriver, and put the battery in the correct position.

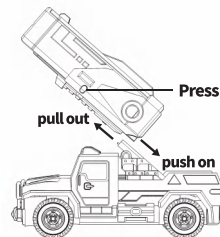
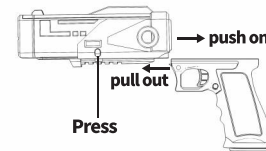


Open the lid at the top upwards



Put the batteries into the box and then close the lid

Playing I:



Playing II:

BATTERY SAFETY USAGE INSTRUCTIONS

1. Battery type: The body uses 1 x 3.7V rechargeable lithium battery, the remote control uses 2 x 1.5V AA non-rechargeable batteries, and the handle uses 4 x 1.5V AAA non-rechargeable batteries.
2. Remove and put the battery in the correct way
3. Non-rechargeable batteries cannot be charged.
4. Different types of batteries or new and old batteries cannot be mixed.
5. Used batteries should be removed from the toy.
6. Place the batteries with the correct polarity.
7. Only batteries of the same model or equivalent to the recommended model can be used.
8. Charging batteries can only be charged under adult supervision.
9. Charging batteries should be removed from the toy before charging.
10. The power terminals must not be short-circuited.
11. USB charging cable is not a toy. During use, the toy charger should be regularly checked for damage to its wires, plugs, housing, and other parts, and if damaged, it should be stopped until it is repaired.

PRECAUTIONS

1. Detachable small parts should be placed well, and must not be swallowed by children.
2. Please do not discard the dismantled packaging anywhere to avoid polluting the environment.
3. Do not store near fire, high temperature and humidity.
4. The battery must be removed after each use.

MAINTENANCE

Wipe the surface of the toy with a clean, soft, dry cloth.

This device complies with Part 15 of the FCC Rules. Operation is subject to the following two conditions: (1) this device may not cause harmful interference, and (2) this device must accept any interference received, including interference that may cause undesired operation

NOTE: This equipment has been tested and found to comply with the limits for a Class B digital device, pursuant to Part 15 of the FCC Rules. These limits are designed to provide reasonable protection against harmful interference in a residential installation. This equipment generates, uses and can radiate radio frequency energy and, if not installed and used in accordance with the instructions, may cause harmful interference to radio communications. However, there is no guarantee that interference will not occur in a particular installation. If this equipment does cause harmful interference to radio or television reception, which can be determined by turning the equipment off and on, the user is encouraged to try to correct the interference by one or more of the following measures:

- Reorient or relocate the receiving antenna.
- Increase the separation between the equipment and receiver.
- Connect the equipment into an outlet on a circuit different from that to which the receiver is connected.
- Consult the dealer or an experienced radio/TV technician for help.

Warning: changes or modifications not expressly approved by the party responsible for compliance could void the user's authority to operate the equipment

The device has been evaluated to meet general RF exposure requirement, the device can be used in portable exposure condition without restriction