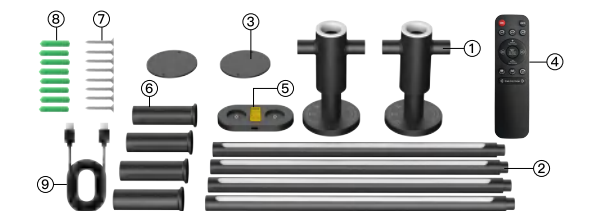


95MM

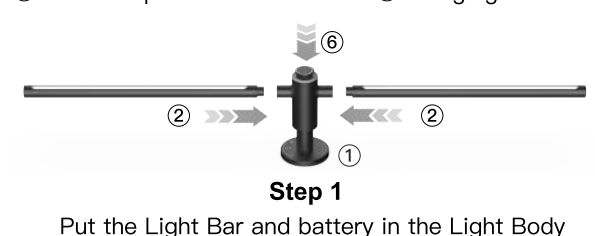
User's Manual of Wall Sconces



How to Install the Light



- ① Light Body *2 ② Light Bar *4 ③ Metal Plate *2
④ Remote-Controller *1 ⑤ Battery Charger Stand *1
⑥ Replaceable Battery *4 ⑦ Screws *8
⑧ Plastic Expansion Tube *8 ⑨ Charging Cable *1



Step 1

Put the Light Bar and battery in the Light Body

Step 2

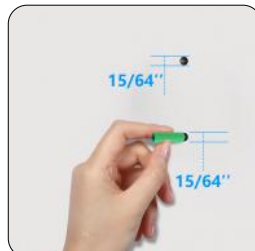
Install the Metal Plate on the wall



1. Mark the holes



2. Drill the holes



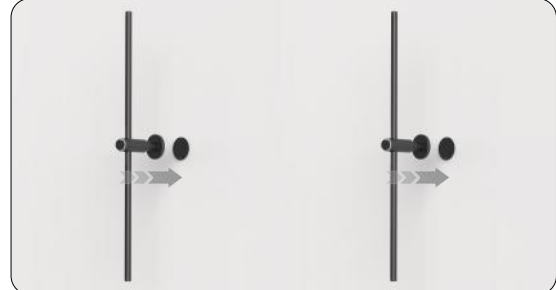
3. Install the plastic expansion tube



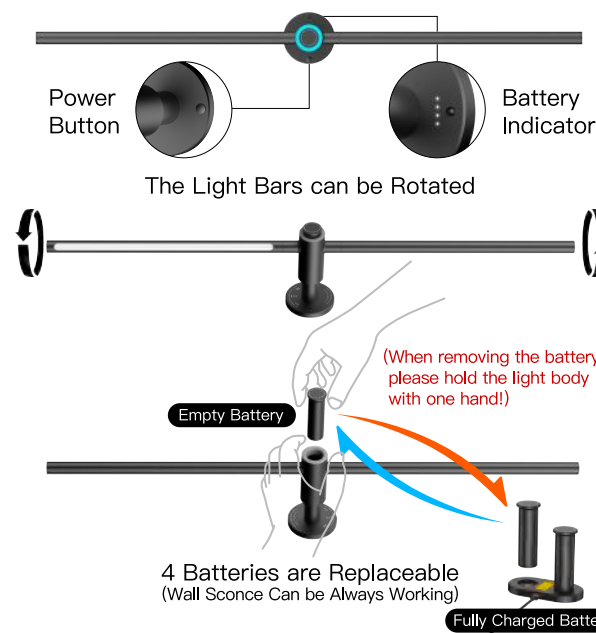
4. Install screws

Step 3

Attach the Light Body to the Metal Plate(Magnetic)



Details of the Wall Sconces



The Function of Remote-Controller



1 Light ON
Turn light ON

2 OFF
Turn light OFF

3 • 30 Minutes Timer
The Light will turn off in 30 minutes

• 60 Minutes Timer
The Light will turn off in 60 minutes

• 90 Minutes Timer
The Light will turn off in 90 minutes

4 •Timer OFF
Disable the timing function

5 Turn up the brightness of the light/
Speed up the gradient of the lights

6 Turn down the brightness of the light/
Speed down the gradient of the lights

7 Change the color mode to the previous one

8 Change the color mode to the next one

9 Change light color temperature to the cool/white/warm

10 Sound Control
The light changes with sound
(In this mode, the performance effect of one light is better)

11 Color Gradient
Change different light color gradients

12 Change light single color to the previous one

13 Change light single color to the next one

App Control the Wall Sconces



Scan the QR code with phone camera to down load the "Raingel" App.(You can also search for "Raingel" through the App Store/Play Store to down the App.)

Scan the QR code with phone camera to down load the "Raingel" App.



Wall Sconces Specification

Product Name: Wall Sconces
Product Model: WL98
Single Battery Capacity: 4500mAh
Battery Output: 3.7V
Light Body Rated Power: 3W
Charger Stand Input: 9V-2.5A
Single Battery Working Time: 5H
Single Light Size: 31.5*3*5.9 inch
Single Light Weight: 1.3 lb
FCC ID:
Made in China



Frequently Asked Questions

① Q:What specification of adapter should be used to charge the stand?

A: Recommend to use the charging cable that matches this device and a adapter that supports PD fast charging of 30W or above.

② Q:Why the remote controller can not work on the wall sconces?

A: 1.Please check the battery power of the remote controller .
2.remove the battery from the light body to cut off the power and restart it.

③ Q:Why can't the APP control the wall sconces?

A: 1.Please check whether the bluetooth on your phone is turned on.
2.Exit the APP and open it again and check whether the APP shows that the light is connected.

④ Q:Why can't the APP connect to the wall sconces?

A: Please check whether the wall sconces have been automatically connected to other mobile phones.

⑤ Q:Why can't the light be turned on after not being used for a long time?

A: Please replace the fully charged battery and try to turn on the light again.

⑥ Q:Why can't the APP be installed after being downloaded?

A: If you encounter a prompt asking for authorization during the installation process, please select "Allow".

⑦ Q:Why can't the APP remotely control the lights?

A: The working range of the phone's bluetooth is only 49 feet. Please perform the bluetooth connection operation with your mobile phone within the 49 feet range of the lights.

⑧ Q:Why can't the light be turned on after a fully charged battery is put into it?

A: Please check if there are any foreign objects in the battery compartment of the light body. The magnets in the battery compartment are prone to attracting some iron filings, which may affect the connection between the battery and the light body.

Something Need Attention

- Please read this user manual carefully before use and keep it properly.
- For the first use, please fully charge the battery of this product.
- It is necessary to choose a adpter that has safety certification to charge the product.
- If the wall sconces are not used for a long time, please be sure to charge them once within one month to maintain the battery performance of the product.
- This product is not waterproof. Please do not pour liquid onto it, otherwise it may cause damage to the product.
- Please make sure to place the battery out of the reach of children to avoid any danger to them.
- Do not use this product in extremely cold or hot environments (temperatures outside the range of 5 to 35°C)
- Storage environment temperature :-5 to 35°C
RH < 70% (20°C±5 is recommended)

Safety Instructions

- Do not disassemble, assemble or repair this product without permission, otherwise it may cause damage to the product or personal injury.
- Do not use the lights in dusty, damp or high-temperature environments.
- Do not place this product near heat sources, or in areas exposed to direct sunlight, excessive dust or mechanical vibration.
- To reduce the risk during charging or use, please do not cover this product with flammable items such as newspapers, tablecloths, and curtains during use.
- When the product battery is fully charged, do not keep it connected to the charger for a long time.
- Please make sure to place the product battery out of the reach of children to avoid any danger to them.
- Do not throw the battery of this product into fire.
- The maximum ambient temperature should not exceed 40°C.

FCC Statement

This device complies with part 15 of the FCC rules. Operation is subject to the following two conditions: (1) this device may not cause harmful interference, and (2) this device must accept any interference received, including interference that may cause undesired operation.

Changes or modifications not expressly approved by the party responsible for compliance could void the user's authority to operate the equipment.

NOTE: This equipment has been tested and found to comply with the limits for a Class B digital device, pursuant to part 15 of the FCC Rules. These limits are designed to provide reasonable protection against harmful interference in a residential installation. This equipment generates uses and can radiate radio frequency energy and, if not installed and used in accordance with the instructions, may cause harmful interference to radio communications. However, there is no guarantee that interference will not occur in a particular installation. If this equipment does cause harmful interference to radio or television reception, which can be determined by turning the equipment off and on, the user is encouraged to try to correct the interference by one or more of the following measures:

- Reorient or relocate the receiving antenna.
- Increase the separation between the equipment and receiver.
- Connect the equipment into an outlet on a circuit different from that to which the receiver is connected.
- Consult the dealer or an experienced radio/TV technician for help.

The device has been evaluated to meet general RF exposure requirement. The device can be used in portable exposure condition without restriction.