

User Manual

S29

This is a smart tag with a multi-color e-ink screen, paired with the exclusive Aura Pad APP. Connect via Bluetooth in the APP to bind the smart tag. Open the Aura Pad APP, select images from the app's provided gallery or your iPhone's album, and cast them onto the e-ink screen of the smart tag.

Apple, Apple Find My, Apple Watch, Find My, iPhone, iPad, iPadOS, Mac, macOS and watchOS are trademarks of Apple Inc., registered in the U.S. and other countries, iOS is a trademark or registered trademark of Cisco in the U.S. and other countries and is used under license.



Shenzhen Hivat Display Technology Co., Ltd

Smart Tag's Appearance and Functions



① Magnetic Charging Port

Provides magnetic charging function
Use a regular charger (5V1A)
It can be fully charged in about 40 minutes

② Button

- 2.1, Pair Mode: Press and hold the button for two seconds, A confirmation beep will sound.
2.2, Serial Number lookup: Press and hold the button for four seconds, Two confirmation beeps will sound.
2.3, Disable Mode: Press and hold the button for six seconds, Three confirmation beeps will sound.
2.4, Factory Reset: Press the button three times and then long press for 2 seconds, A long confirmation beep will sound.

Learn More:

Locate the button on the front of the S29.
Press and hold the button for four seconds. One beep will sound, and then two beeps.

How to Disable:

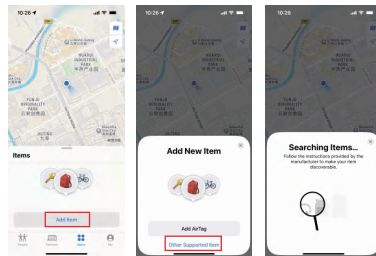
Locate the button on the front of the S29.
Press and hold the button for six seconds. One beep will sound, then two beeps, and then three beeps.

Find My-Smart Tag

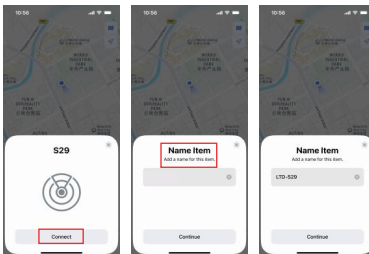
Find My offers a simple and secure way to locate items registered to your Apple ID via the Find My app on iPhone, iPad, Mac, or the Find Items app on Apple Watch.

Operation Instructions:

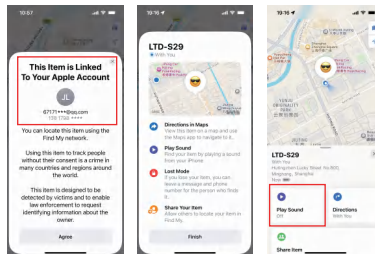
1. Turn on the network, Bluetooth, and location services on your iPhone.
2. Tap the "Find My" icon on your iPhone.
3. Tap "Add Item", then tap "Other Supported Item".



4. After searching for the smart tag, tap "Connect".
5. Customize the name and emoji of the smart tag according to your personal preferences.



6. The item has been linked to your Apple account.
7. Then you can view the location of the smart tag, tap "Play Sound" to confirm if the smart tag is successfully connected.



Product Usage Guide

1. Download the APP

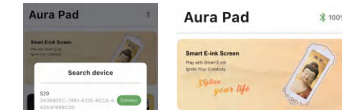
Method 1: Scan the QR code to download and install the Aura Pad APP.



Method 2: Download and install the Aura Pad APP in the App Store.

2. Connect the smart tag via Bluetooth

- 2.1 Make sure the Bluetooth function on your iPhone is turned on.
- 2.2 Open the Aura Pad APP. On the home page, tap the gray Bluetooth icon in the upper-right corner, select the smart tag device to connect. After successful connection, the gray Bluetooth icon will turn green and display the device's current battery level.

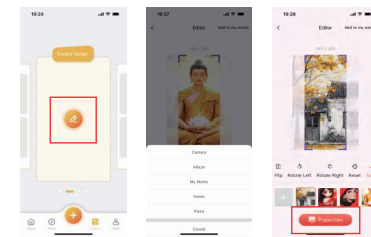


Aura Pad APP Introduction

1. Use the Aura Pad APP to cast images to the e-ink screen of the smart tag

Method 1:

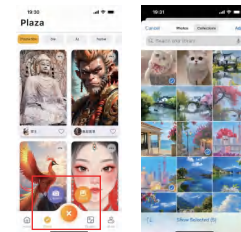
Tap the edit icon and enter the editor interface. You can select up to 10 images, preview them, and cast them to the e-ink screen of the smart tag.



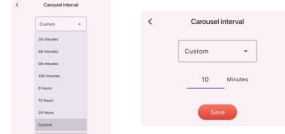
Method 2:

Tap the plus icon, take photos with your phone's camera, or import images from your phone's album, then cast them to the e-ink screen of the smart tag.

Method 3:
Tap any built-in image of the app, enter the editor interface, and then cast it to the e-ink screen of the smart tag.



Set the rotation frequency of images on the smart tag's e-ink screen



FCC Statement

FCC Statement

This equipment has been tested and found to comply with the limits for a Class B digital device, pursuant to part 15 of the FCC Rules. These limits are designed to provide reasonable protection against harmful interference in a residential installation. This equipment generates, uses and can radiate radio frequency energy and, if not installed and used in accordance with the instructions, may cause harmful interference to radio communications. However, there is no guarantee that interference will not occur in a particular installation. If this equipment does cause harmful interference to radio or television reception, which can be determined by turning the equipment off and on, the user is encouraged to try to correct the interference by one or more of the following measures:

- Reorient or relocate the receiving antenna.
- Increase the separation between the equipment and receiver.
- Connect the equipment into an outlet on a circuit different from that to which the receiver is connected.
- Consult the dealer or an experienced radio/TV technician for help.

Caution: Any changes or modifications to this device not explicitly approved by manufacturer could void your authority to operate this equipment. This device complies with part 15 of the FCC Rules. Operation is subject to the following two conditions: (1) This device may not cause harmful interference, and (2) this device must accept any interference received, including interference that may cause undesired operation.

RF Exposure Information

The device has been evaluated to meet general RF exposure requirement. The device can be used in portable exposure condition, compliance with exposure requirements. This equipment should be installed and operated with minimum distance 0 mm between the radiator & your body.

Attachment List

Smart Tag, Charging Cable, User Manual

Safety Precautions

Before using this product, please read the following safety precautions:

1. Do not charge with a damaged or untested charger to avoid fire, explosion, or other hazards.
2. Keep the device and all accessories out of children's reach to prevent choking or other risks from accidental ingestion.
3. The device is not waterproof – stay away from any liquids.
4. Avoid dropping, burning, or crushing the product to prevent damage.

Warranty Card

Dear User:

Thank you for choosing our company's products. To provide you with warranty services, please fill out this card carefully, which will facilitate future repairs. This certificate serves as an important basis for the product's Three Guarantees policy. Please keep it properly.

Your Name : _____
Telephone Number : _____
Product Model : _____
Purchase Date : _____
Serial Number : _____

Warranty Instructions

1. If the product fails within one year from the purchase date under normal use as per the instruction manual, it is eligible for free repair.
2. The following situations are not covered by free repair, but paid repair services are available.
 - 2.1 Failure to present the warranty card and purchase records.
 - 2.2 Damage caused by accidental factors or improper use.
 - 2.3 Damage caused by self-repair without our company's permission.
 - 2.4 Products that exceed the validity period of the Three Guarantees are not covered by free repair.

For products beyond the warranty period, our company will continue to provide paid services.