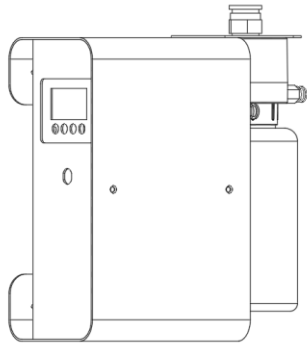


# Scent Diffuser User Manual

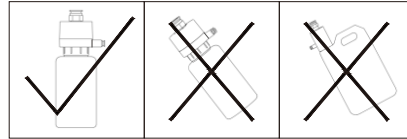


Android / IOS

## ⚠️ Attentions

Please read this manual in detail before using the device and keep it carefully.

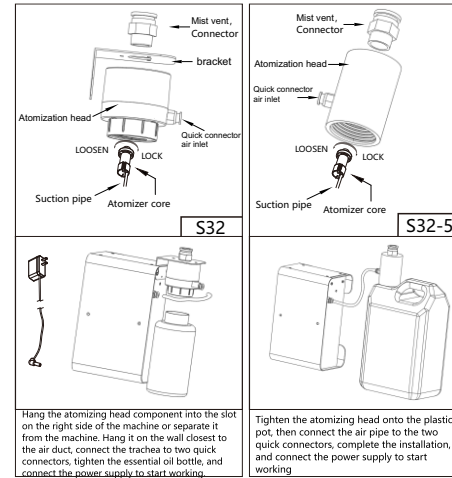
1. Please do not use overloaded power socket, broken wire and charger. It may endanger your safety and cause a fire, please replace in time if it happens;
2. Please do not try to open the shell of the device. Please contact seller timely if any abnormality.
3. Please do not invert the device after filling oil in case of leaking and causing damage.



## Parameters (Two types capacity machines to choose from)

Model	S32	S32-5L
Size	L150*W110*H233(mm)	
Capacity	600mL	5000mL
N.W	2.8kg	3.05kg
Coverage	2000M <sup>3</sup>	
Voltage	DC12V	
Power	14W	
Noise	<42dba	

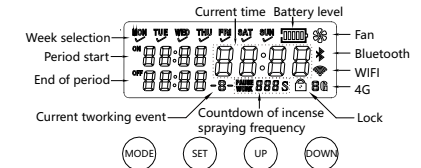
## Installation



## Accessories

Power adapter		Large air tube (Used when importing fresh air ducts)	
Spare atomizer core		Mini air tube (Connect the host and atomizer)	
Spare cotton ring			

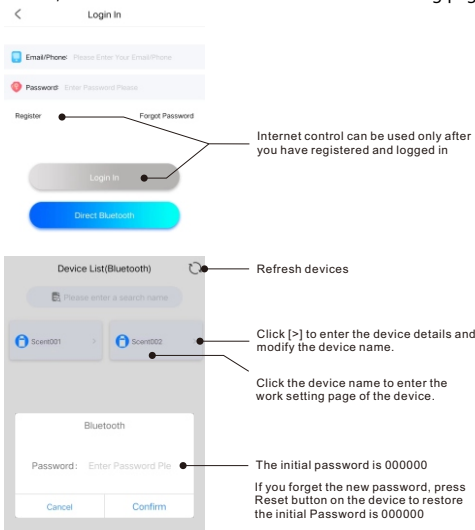
## Setting



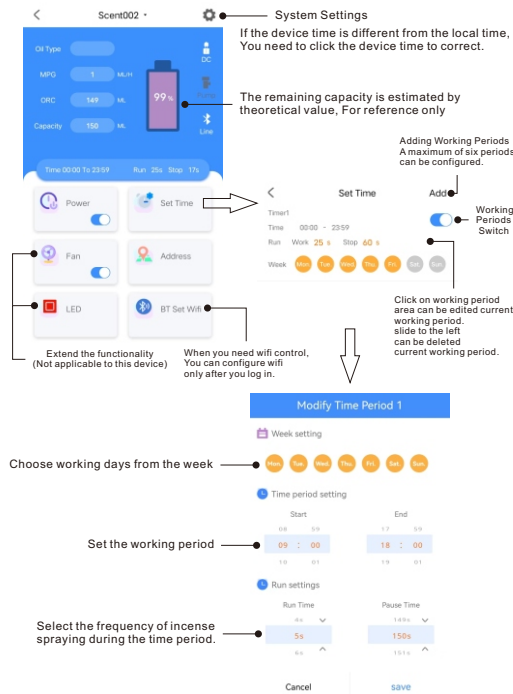
1. Turn power on. The LCD displays the current hour, minute, week, and the start and end of the current time period time. And then the current working status is displayed as follows: in the countdown area of incense spraying frequency, "WORK" (means incense spraying), "PAUSE" (means incense spraying is suspended), and no display (Not in working period). (Battery level, fan, Bluetooth, WIFI, 4G) These ICONS are displayed selectively according to the model.
2. Press **SET** for 5 seconds to activate the current time setting interface, then press **UP** or **DOWN** to adjust the hour, minute, or work days setting.
3. Press **MODE** to set device's work period and WORK/PAUSE time.
  - A. Press **MODE** for first time, that shows to adjust ON time of first work period. Then press **SET UP DOWN**, to adjust the hour, minute and work days respectively.
  - B. Press **MODE** for second time, that shows to adjust OFF time of first work period. Then press **SET UP DOWN**, to adjust the hour, minute and work days respectively.
  - C. Press **MODE** for third time, set incense spraying time (WORK), press **UP** and **DOWN** to set.
  - D. Press **MODE** for fourth time, set incense spraying is suspended time (PAUSE), press **UP** and **DOWN** to set.
4. Same as Step 3, set the parameters of 2nd/3rd/4th/5th/6th working periods in sequence.
5. Press the **UP** for 5 seconds to turn off the fan, and the icon disappears. Press the **UP** for 5 seconds to turn on the fan and display the icon (No fan model, this feature is invalid).
6. Press **DOWN** for 5 seconds to lock the device, display the icon , and then press the **DOWN** for 5 seconds to unlock the device. Icon disappears.

## Setting

1. Scan the QR code on the cover or search for "Air Aroma" in the App store Download and Install.
2. Open the "Air Aroma" APP and click [Direct Bluetooth]. If you need to connect to the Internet to use the device, You have to register with your cell phone number and click [Login In].
3. Click the device that is found. In the password input dialog box, enter Initial Password to access the work setting page.



## Set the working period and fragrance concentration



## Malfunction Debugging

Please try to solve the problem as below before fixing the machine.

Reset the default setting by pressing **MODE** for 5 seconds.  
Default Setting: The ON time of 1ST work period is 8:00, OFF time is 22:00. WORK time is 60 seconds, PAUSE time is 60 seconds. The 2nd / 3rd / 4th / 5th/6th work periods stay in blank.

Breakdown	Solution
No spray	<ul style="list-style-type: none"><li>- Check if power supply is energized.</li><li>- Check if the system time is consistent with the local time.</li><li>- Check if device is not in work period.</li><li>- Check if the air pump is working and if there is pressure at the outlet of the main engine.</li><li>- Check if the suction pipe is blocked or detached.</li></ul>
Spray gets weak	<ul style="list-style-type: none"><li>- Check the sealing ring of atomizing head for damage.</li><li>- Check if the spray outlet is blocked.</li><li>- Check if the atomizing core in the atomizing head is loose or blocked.</li></ul>
Oil leakage	<ul style="list-style-type: none"><li>- Check if atomizer head is damaged.</li><li>- Check the cotton gasket at the mouth of the atomizing head bottle for damage or removal.</li><li>- Check if oil bottle connects to atomizer head closely.</li></ul>
Abnormal noise	<ul style="list-style-type: none"><li>- Air pump is loose, please fix it correctly.</li><li>- Air pump is damaged, please replace it with a new one.</li></ul>

## Maintenance

In order to ensure the best diffusing effect, please check and maintain the device regularly as the following steps.

1. Unlock the door and take out oil canister which is spent.
2. Fill some alcohol into the canister and clean it.
3. Install the canister on the device filling with alcohol and make the device stay in working status for 5-10 minutes.
4. When the amount of atomization is weakened after aging and long service time, the spare cotton ring or replace atomizing core in atomizing head (Diagram of atomizing core replacement)

## After-sales Service

The warranty is 1 year from the date of sale, not including device shell, electric wires, outer pipe and the other vulnerable parts, as well as the damage caused by human or accident. Permanent maintaining for value will be provided if the machine exceed the warranty.  
If there is any issue of after-sales, please contact authorized sales service in corresponding area, or contact Sales Center directly.

## Warranty Card

Start Date of Warranty Period	Malfunction Description	Maintenance Result	Maintainer's Signature

**FCC Warning:**

This equipment has been tested and found to comply with the limits for a Class B digital device, pursuant to part 15 of the FCC Rules. These limits are designed to provide reasonable protection against harmful interference in a residential installation. This equipment generates, uses and can radiate radio frequency energy and, if not installed and used in accordance with the instructions, may cause harmful interference to radio communications. However, there is no guarantee that interference will not occur in a particular installation. If this equipment does cause harmful interference to radio or television reception, which can be determined by turning the equipment off and on, the user is encouraged to try to correct the interference by one or more of the following measures:

- Reorient or relocate the receiving antenna.
- Increase the separation between the equipment and receiver.
- Connect the equipment into an outlet on a circuit different from that to which the receiver is connected.
- Consult the dealer or an experienced radio/TV technician for help.

**Caution:** Any changes or modifications to this device not explicitly approved by manufacturer could void your authority to operate this equipment.

This device complies with part 15 of the FCC Rules. Operation is subject to the following two conditions:

(1) This device may not cause harmful interference, and (2) this device must accept any interference received, including interference that may cause undesired operation.

This equipment complies with FCC radiation exposure limits set forth for an uncontrolled environment. This equipment should be installed and operated with minimum distance 20cm between the radiator and your body.