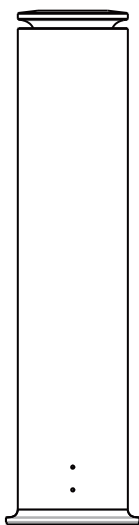


App control by Wifi / Bluetooth

Aroma Diffuser

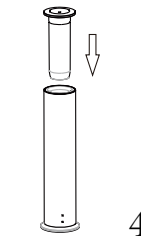
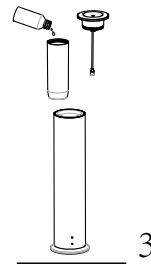
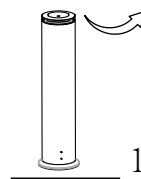
Product instruction manual



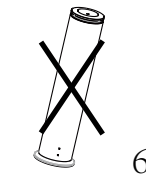
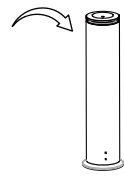
Android / IOS

Installation Notes

Anticlockwise Loosen



Clockwise Tighten



1. Rotate and open the top of the machine ;
2. Take out the oil bottle and atomizer head ;
3. Fill the bottle with essential oil ;
4. Insert the oil bottle and atomizer head into the main body, rotate then tighten ;
5. Connect to the power supply press the power button, and the device starts to work ;
6. **Do not turn the device upside down after loading the essential oil, so as to avoid essential oil leakage.**

Product Parameter

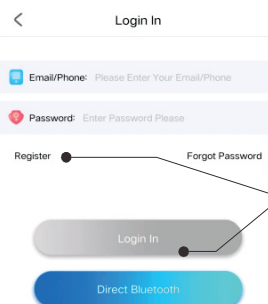
Size	Φ70*Φ85*H325(mm)	Coverage	300m ³
Oil Capacity	100ml	Power Source	DC5V
Net Weight	1kg	Rated Power	2W

Accessories

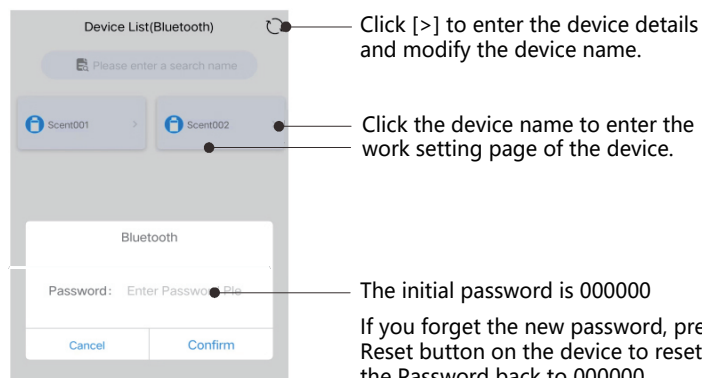
Name	Picture
Adapter (optional)	
Cable	
User Manual	

Setting

1. Scan the QR code on the cover or search for "scentway" in the App store Download and Install.
2. Open the "scentway" APP and click the device found directly. If you need to connect to the Internet to use the device, You have to register with your cell phone number and click[Login in]
3. Click the device that is found. Enter Initial Password (000000) to access the work setting page.



Internet control can be used only after you have registered and logged in



Set the working period and fragrance concentration

Oil Type

MPG

ORC

Capacity

3

229

501

ML

ML

ML

45%

2023-06-25 Sun 15:54:24

Time 11:00 To 21:00

Run 30s

Stop 54s

Power

Set Time

Fan

BT Set Wifi

System Settings

If the device time is different from the local time, You need to click the device time to correct.

The remaining oil capacity is an theoretical value caculated by system, For reference only

Adding Working Periods. A maximum of six periods can be set.

Working Periods Switch

Click detail data to edit Slide to left to delete current working period line.

Open/close the fan (Not applicable to this device)

When you need wifi control, You can access wifi after login.

Modify Time Period 1

Week setting

Choose working days from the week

Set the working period of machine

Set the scent spraying on/pause time to adjust scent concentration

Problems Self-Checking

Before sending machine to repair, please try to solve the problems by following below the steps.

Problems	Checking points and solutions
No mist or just little mist	1. Check whether the power supply is powered on, if no, connect the power supply correctly. 2. Check whether the PE-gasket/Rubber Ring of the atomizing head/oil Suction Pipe is damaged or fallen off
oil Leakage	1. Check whether the atomizing head is damaged,if yes, contact supplier 2. Check whether the essential oil bottle and the atomizing head are tightened,if not, tighten it correctly
Unnorma INoise	1. Check whether the air pump is loose, if yes fix the air pump correctly 2. Check whether the air pump is damaged, contact supplier to replace a new one.

Device Maintenances

To ensure the best aroma effect customers need to regularly inspect and maintain the equipment as follows

- Unscrew the atomizing head and take out the essential oil bottle;
- Pour an appropriate amount of alcohol into the essential oil bottle and clean it;
- After cleaning, pour a small amount of alcohol, install the oil bottle on the atomizing head, Insert the main body, rotate and tighten, and turn on the device for 5 to 10 minutes;
- After the equipment is cleaned, turn off the power;

⚠️ Precautions

Please read this instruction manual carefully before using the device and keep it in a safe place.

- Do not use overloaded power sockets,damaged power cords and plugs, which may endanger your safety and may cause a fire. please use correct ones in time.
- Please do not try to open the case of the device. If the device is abnormal, please contact the seller in time;
- Do not turn the device upside down after loading the essential oil, so as to avoid essential oil leakage.

Warranty Period:

One year from the date of sale

Warranty scope:

Covers the equipment itself,
Excludes shells, wires and external pipes,
Excludes man-made or accidental damage,
Excludes maintenances beyond the free warranty period.
If you encounter any after-sales problemsyou can contact the authorized sales and service providers in each regionor contact our sales center.

Warranty Card

This warranty card is a quality guarantee and must be filled in truthfully

Warranty card #1	
Warranty Date	
Fault Description	
Calibration Date	
Repair Results	
Repairer Signature	
Warranty card #2	
Warranty Date	
Fault Description	
Calibration Date	
Repair Results	
Repairer Signature	

FCC Warning:

This equipment has been tested and found to comply with the limits for a Class B digital device, pursuant to part 15 of the FCC Rules. These limits are designed to provide reasonable protection against harmful interference in a residential installation. This equipment generates, uses and can radiate radio frequency energy and, if not installed and used in accordance with the instructions, may cause harmful interference to radio communications. However, there is no guarantee that interference will not occur in a particular installation. If this equipment does cause harmful interference to radio or television reception, which can be determined by turning the equipment off and on, the user is encouraged to try to correct the interference by one or more of the following measures:

- Reorient or relocate the receiving antenna.
- Increase the separation between the equipment and receiver.
- Connect the equipment into an outlet on a circuit different from that to which the receiver is connected.
- Consult the dealer or an experienced radio/TV technician for help.

Caution: Any changes or modifications to this device not explicitly approved by manufacturer could void your authority to operate this equipment.

This device complies with part 15 of the FCC Rules. Operation is subject to the following two conditions:

(1) This device may not cause harmful interference, and (2) this device must accept any interference received, including interference that may cause undesired operation.

This equipment complies with FCC radiation exposure limits set forth for an uncontrolled environment. This equipment should be installed and operated with minimum distance 20cm between the radiator and your body.