

承 认 书

客户确认 CUSTOMER APPROVED BY

批准 Approved by	审核 Checked by	制表 Prepared by

供方确认 SUPPLIER APPROVED BY

批准 Approved by	审核 Checked by	制表 Prepared by

Address: No. 50, Tiezai Road, Gongle Community, Xixiang Subdistrict, Bao'an District,
Shenzhen City. Floor 14, Building B, Fenghuang Zhigu.

天线测试报告

antenna testing

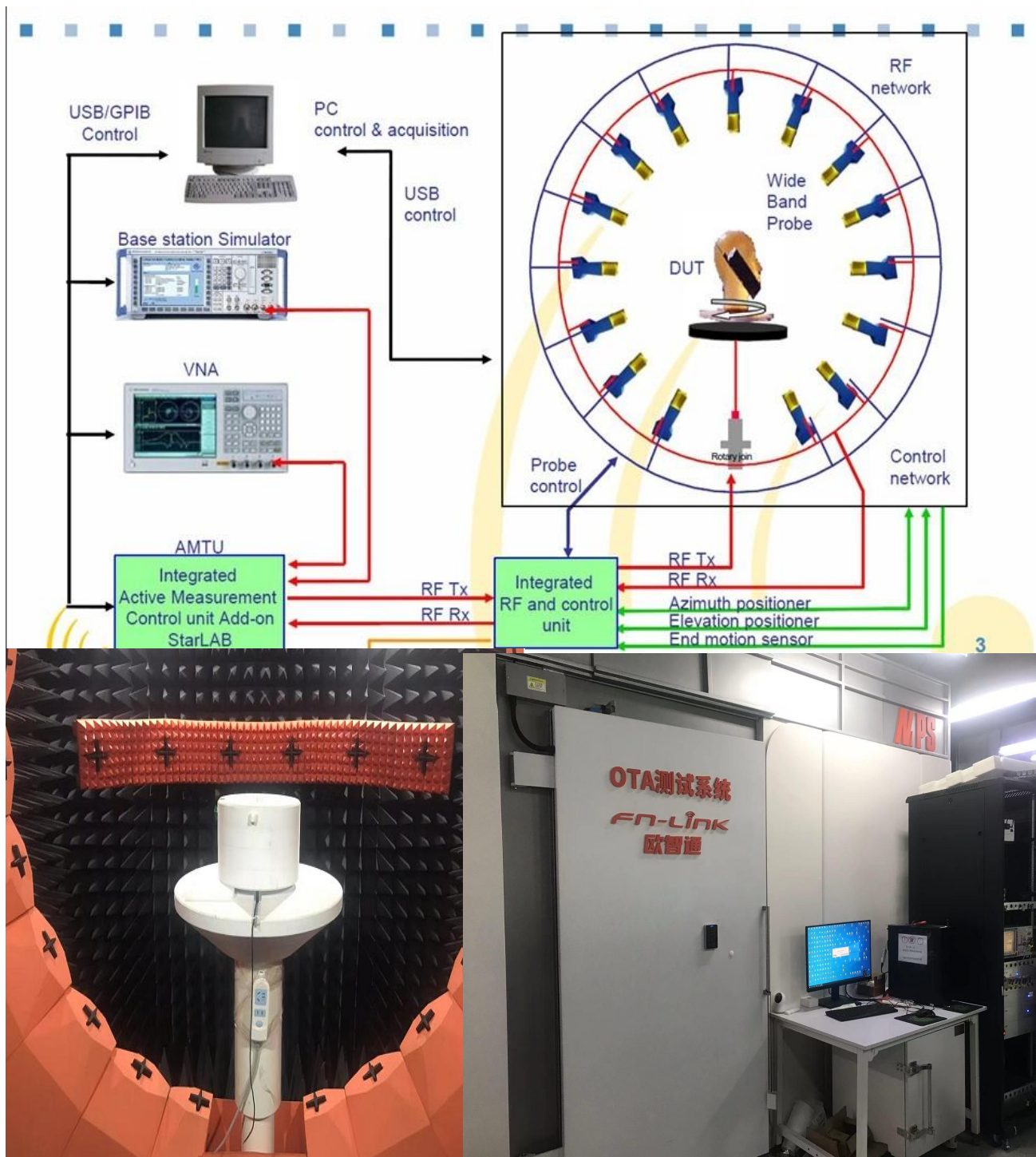
客 户 Customer	添越
项目名称 Project Name	
客 户 料 号 Customer NO.	
规 格 specification	2.4-5GWiFi
供 方 料 号 Supplier NO.	
规 格 书 编 号 Specification NO.	
编写人 Write by	韦源基
版本 REV.	Ver.1
日 期 Date	2024-6-19
备 注 Note	

1. 试验设备和条件(Test Equipment & Conditions)

1.1 . Network Analyzers : KEYSIGHT P5002A

1.2 . Communications Test Set: R&S CMW 500

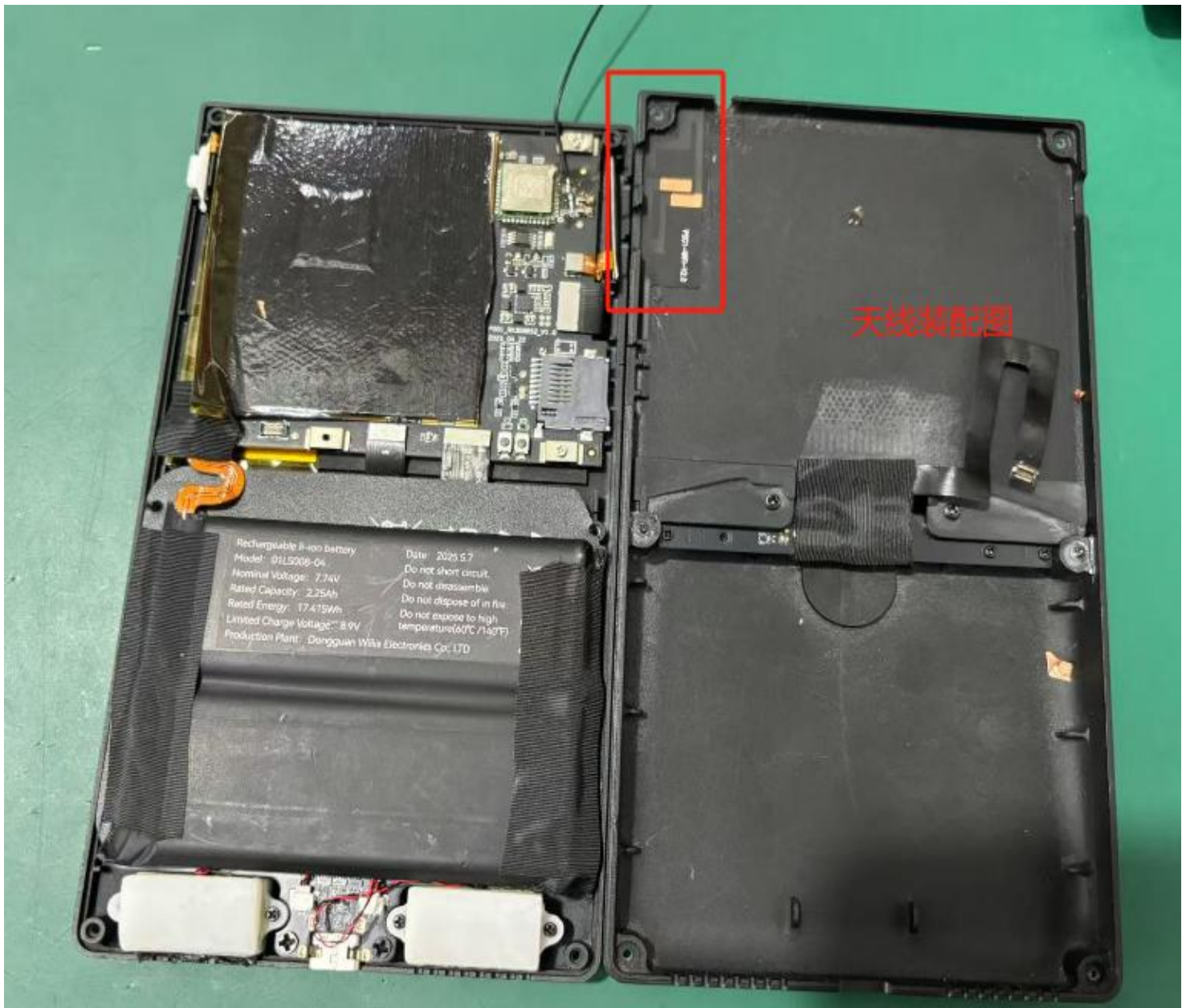
1.3 . 3D Chamber Test System: 24



2. explain.

This report summarizes the electrical performance results of the antenna in this project, including the S11 parameters, Gain and Efficiency of the antenna.

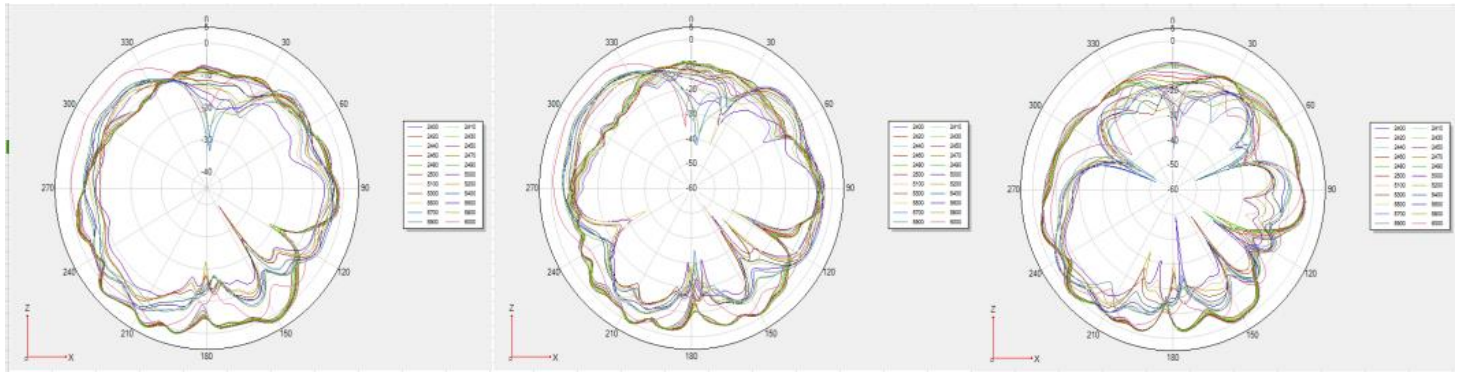
Antenna assembly drawing



2.4-5G

Frequency/Mhz	MaxGain/dBi	Efficiency / %
2400	3.06	49.26
2410	3.1	51.4
2420	3.64	54.16
2430	3.62	56.13
2440	3.89	58.19
2450	3.74	57.97
2460	3.93	56.67
2470	4.05	55.81
2480	4.12	54.87
2490	4.01	53.25
2500	3.88	51.11
5000	1.11	43.44
5100	1.78	42.55
5200	1.79	46.48
5300	1.33	45.5
5400	2.22	42.66
5500	2.4	39.57
5600	1.77	39.35
5700	2.64	40.99
5800	2.12	10.87

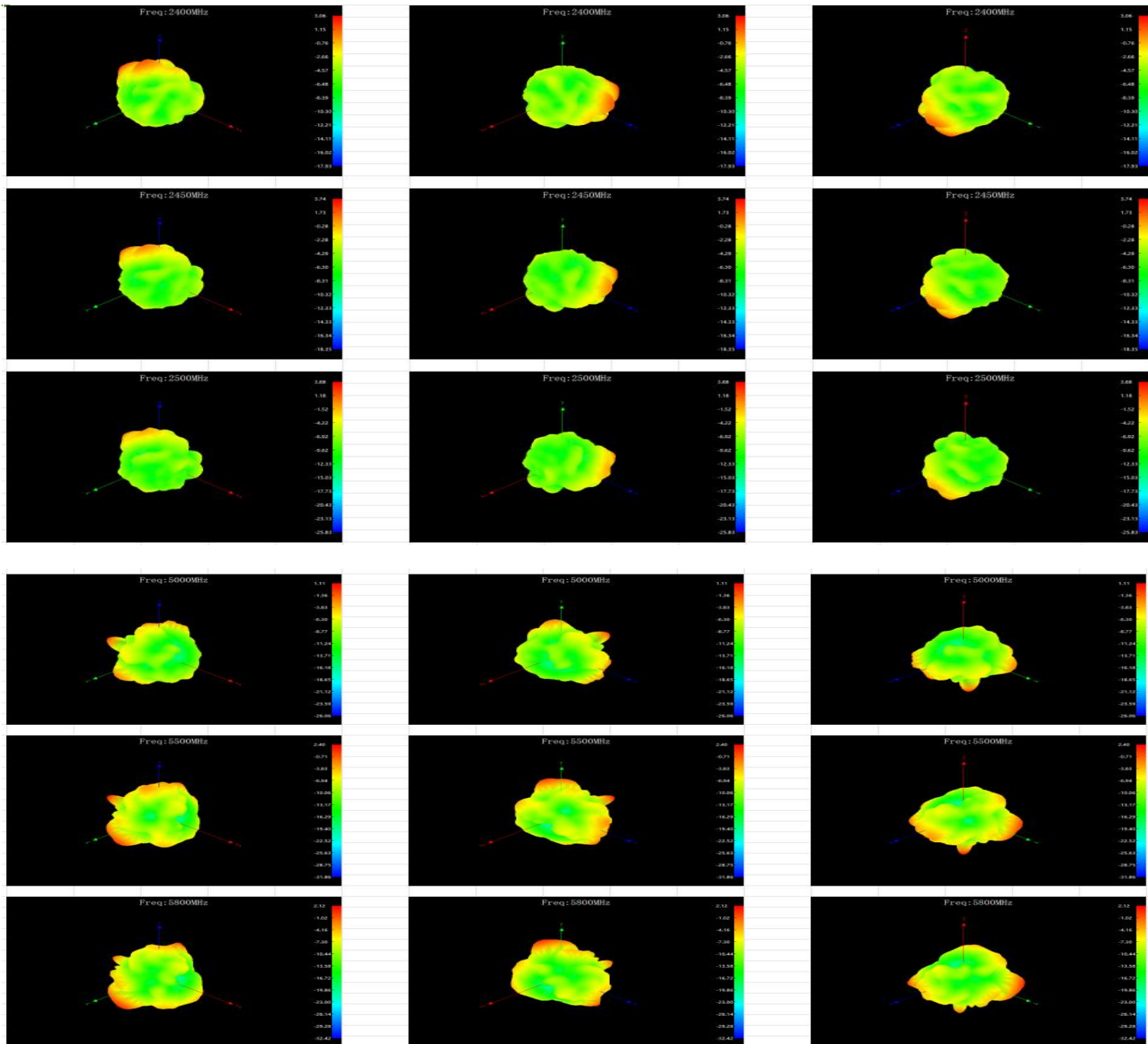
WIFI+BT2.4-5G (Black antenna)3DPattern@2400-2500MHz 5150-5850MHz



Z-X

Z-Y

X-Y



OTA

Item	Measurement	Standard	Band	Channel	Frequency	Total
1	TRP	WIFI (AP)	WIFI_B (11M)	1	2412	15.7
2	TRP	WIFI (AP)	WIFI_B (11M)	6	2437	15.17
3	TRP	WIFI (AP)	WIFI_B (11M)	11	2462	15.34
4	TIS(EIRP)	WIFI (AP)	WIFI_B (11M)	1	2412	-80.53
5	TIS(EIRP)	WIFI (AP)	WIFI_B (11M)	6	2437	-80.56
6	TIS(EIRP)	WIFI (AP)	WIFI_B (11M)	11	2462	-81.76
7	TRP	WIFI (AP)	WIFI_G (54M)	1	2412	14.41
8	TRP	WIFI (AP)	WIFI_G (54M)	6	2437	14.4
9	TRP	WIFI (AP)	WIFI_G (54M)	11	2462	14.41
10	TIS(EIRP)	WIFI (AP)	WIFI_G (54M)	1	2412	-68.53
11	TIS(EIRP)	WIFI (AP)	WIFI_G (54M)	6	2437	-68.56
12	TIS(EIRP)	WIFI (AP)	WIFI_G (54M)	11	2462	-70.76
13	TRP	WIFI (AP)	WIFI_N_ISM (65M)	1	2412	13.74
14	TRP	WIFI (AP)	WIFI_N_ISM (65M)	6	2437	12.98
15	TRP	WIFI (AP)	WIFI_N_ISM (65M)	11	2462	12.57
16	TIS(EIRP)	WIFI (AP)	WIFI_N_ISM (65M)	1	2412	-67.87
17	TIS(EIRP)	WIFI (AP)	WIFI_N_ISM (65M)	6	2437	-67.53
18	TIS(EIRP)	WIFI (AP)	WIFI_N_ISM (65M)	11	2462	-68.80
7	TRP	WIFI (AP)	WIFI_A (54M)	149	5745	14.46
8	TRP	WIFI (AP)	WIFI_A (54M)	157	5785	14.73
9	TRP	WIFI (AP)	WIFI_A (54M)	161	5805	14.87
10	TIS(EIRP)	WIFI (AP)	WIFI_A (54M)	149	5745	-69.4
11	TIS(EIRP)	WIFI (AP)	WIFI_A (54M)	157	5785	-69.65
12	TIS(EIRP)	WIFI (AP)	WIFI_A (54M)	161	5805	-68.29