

# QUICK START GUIDE

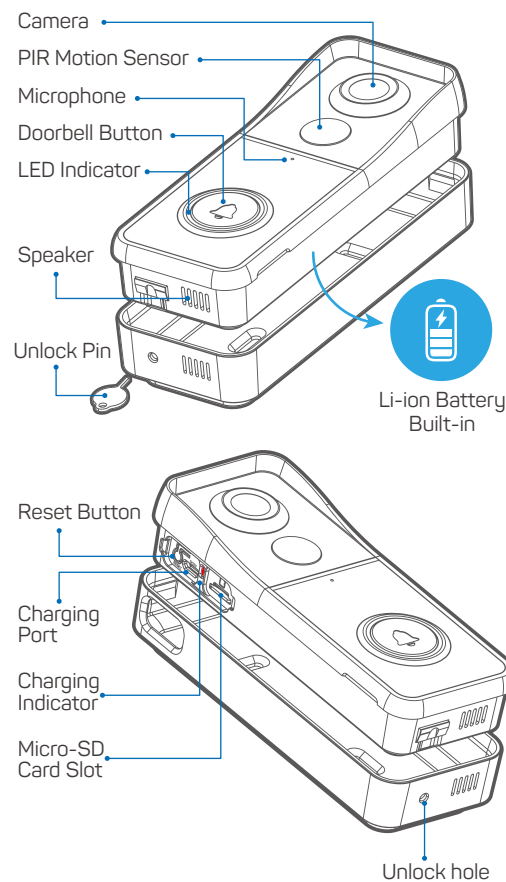
Model: Bell J9

V5.3.1

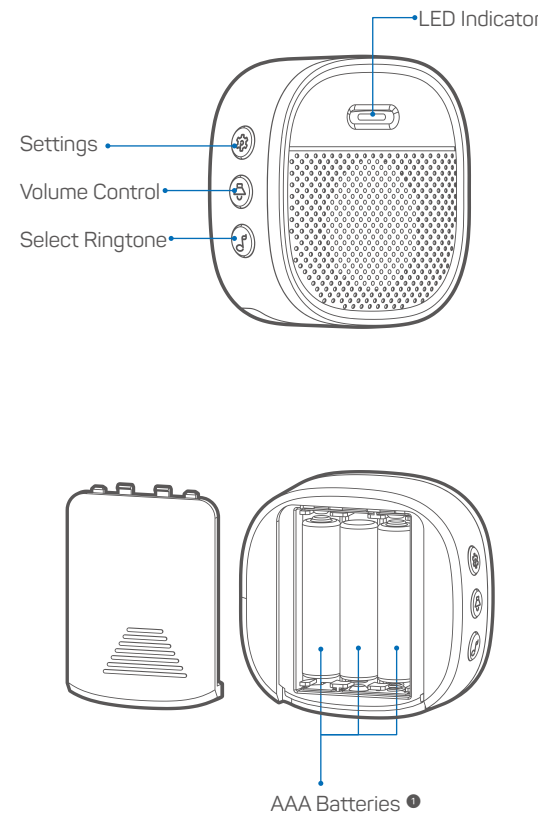
## Smart Wire-free Video Doorbell

Note: Manual contents are subject to change without notice in accordance with our polivy of continuous product improvement.

### 1. Meet the doorbell



### 2. Meet the chime



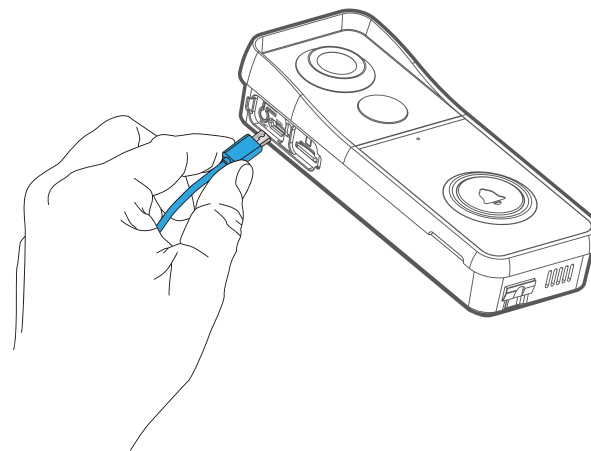
① Please mind the battery polarities when installing.

### 3. Charge your doorbell

Prior to the doorbell installation, please charge up your doorbell for about 8-10 hours till the charging LED turns BLUE from RED.

LED STATUS	INDICATION
Solid red	Battery charging
Solid blue	Fully charged

Compatible charger ( not provided ): USB compatible mobile phone charger (DC 5V = 1A~2A).



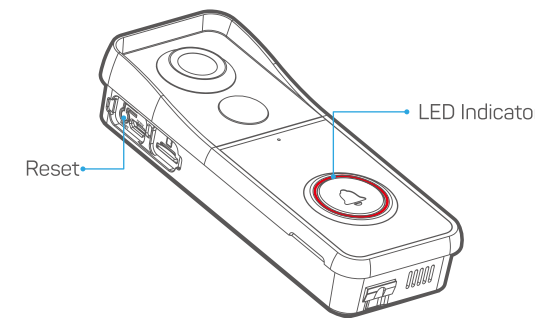
### 4. App download

Search 'Cloudot' in the App stores or scan below QR code to download the App.



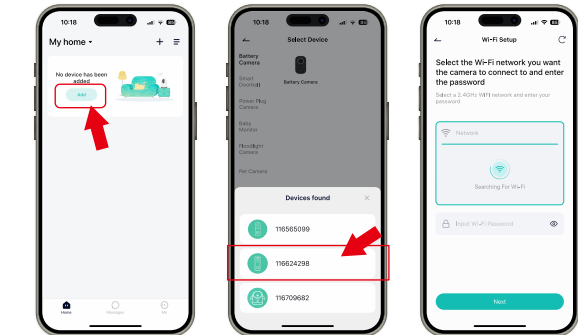
### 5. Set up doorbell

① Press your doorbell to activate, and you will see the LED indicator flashes red (once per second). If not, press and hold reset button for 5 seconds to restore factory defaults.



② Make sure Bluetooth is enabled on your phone.

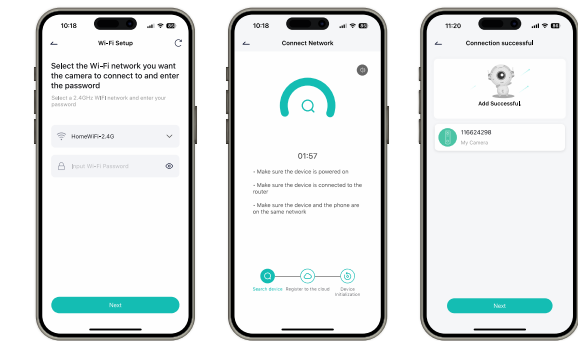
③ Start adding your doorbell to Cloudot App, following the in-app instructions, or referring to below APP guide.



Tap on Add button.

Tap on the doorbell in the pop-up list.

The APP will auto search 2.4GHz Wi-Fi



Select Wi-Fi SSID and input your P/W.

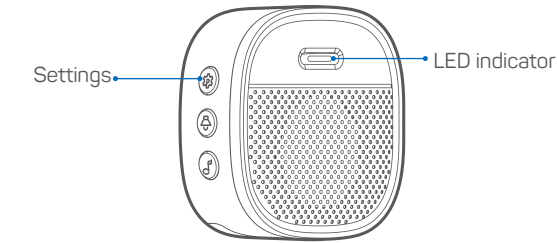
Device connecting to the selected Wi-Fi.

Adding camrea succeeds. Congrats!

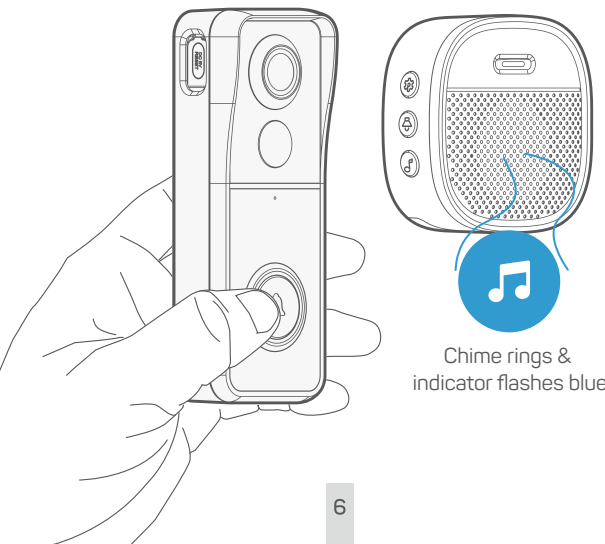
**FCC Statement**  
This device complies with part 15 of the FCC Rules. Operation is subject to the following two conditions: (1) This device may not cause harmful interference, and (2) this device must accept any interference received, including interference that may cause undesired operation.  
Note: This equipment has been tested and found to comply with the limits for a Class B digital device, pursuant to part 15 of the FCC Rules. These limits are designed to provide reasonable protection against harmful interference in a residential installation. This equipment generates, uses and can radiate radio frequency energy and, if not installed and used in accordance with the instructions, may cause harmful interference to radio communications.  
However, there is no guarantee that interference will not occur in a particular installation. If this equipment does cause harmful interference to radio or television reception, which can be determined by turning the equipment off and on, the user is encouraged to try to correct the interference by one or more of the following measures:  
-Reorient or relocate the receiving antenna.  
-Increase the separation between the equipment and receiver.  
-Connect the equipment into an outlet on a circuit different from that to which the receiver is connected.  
-Consult the dealer or an experienced radio/TV technician for help.  
Note: The Grantee is not responsible for any changes or modifications not expressly approved by the party responsible for compliance. such modifications could void the user's authority to operate the equipment.  
The device has been evaluated to meet general RF exposure requirement. This equipment complies with FCC's RF radiation exposure limits set forth for an uncontrolled environment. This device and its antenna(s) must not be co-located or conjunction with any other antenna or transmitter.

## 6. Pair with your indoor chime

1 Click the **SETTING** button on the chime, and the chime will be in pairing mode for 20 seconds, with its red LED flashing.

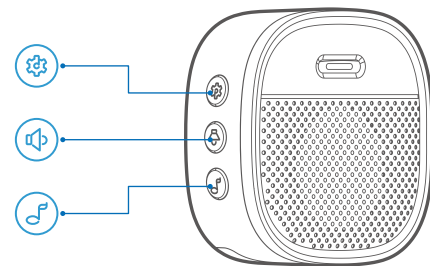


2 Press the doorbell button to send a pairing signal, and your chime will sound to react, together with its blue LED flashing. Chime pairing succeeds.



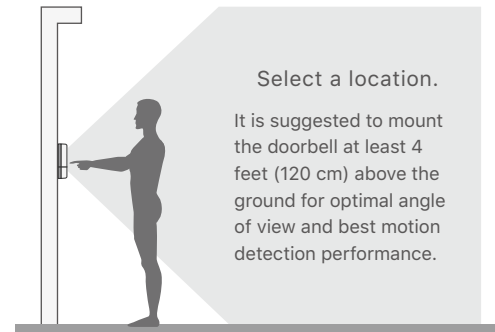
## 3 Chime settings.

- Settings.**  
Click to enter/quit pairing mode;  
Press & hold for 5 seconds to restore factory defaults.
- Volume control button.**  
Click to control volume:  
level 1: 110 dB; level 2: 100 dB  
level 3: 90 dB; level 4: 80 dB
- Ringtone selection.**  
Click to change ringtone (4 ringtones available).

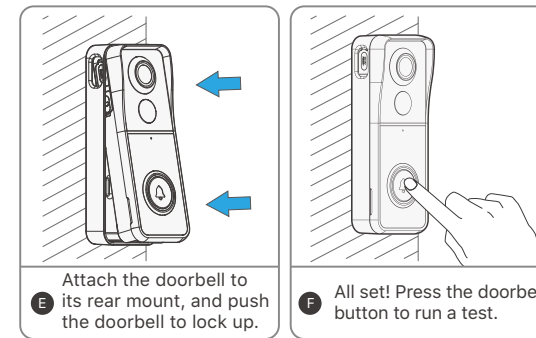
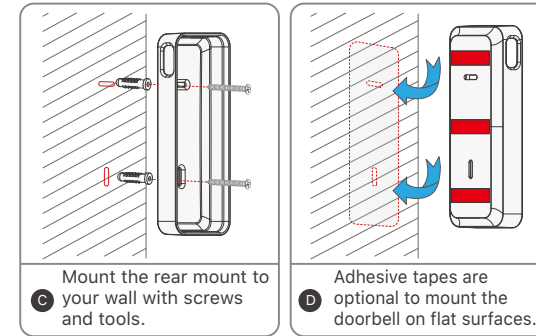
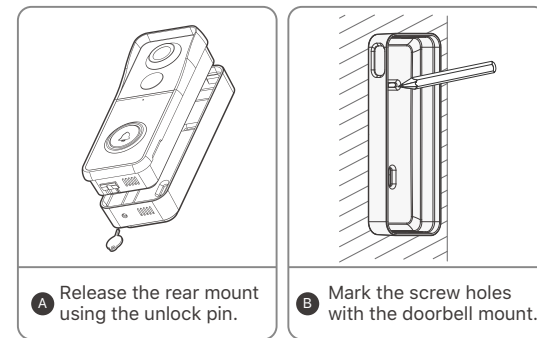


## 7. Install Your doorbell

1 Select location for your doorbell.



2 Mount your doorbell.



## 8. Accessory (Optional)

### Doorbell Angle Mounts

You can purchase the following angled brackets so as to point your doorbell to a specific view angle.



## 9. Trouble Shooting

Q1: Is the video doorbell powered by battery?  
A1: Yes, there is a Li-ion battery built-in. Thanks to the low power consumption technology, a full charge lasts for more than 2 to 3 months in our lab test environment (Lab test condition: 10 events per day, 15 seconds video recording per event).

Q2: Does it support legacy hardwire power source?  
A2: No, it doesn't. If you need longer battery endurance, suggest that adding a solar battery charger for your doorbell, if only there is sunshine in your doorbell location. You can contact our after-sale service to know where to buy.



Q3: Does it work with existing mechanical chime?  
A3: No. The doorbell comes with a battery powered wireless chime to notify people when your visitor presses the doorbell button. And our wireless chime is 100% wireless, you can place it almost everywhere you like. The transmission distance in open space is more than 100 meters (328 feet).

Q4: How many wireless chimes can be added to the doorbell?  
A4: You can add several wireless chimes to work with your video doorbell. And one chime can be paired with upto 8 video doorbells.

Q5: Does it support customized Motion Detection Zones.  
A5: Yes it does. You can customize the detection zone in the doorbell settings.

Q6: Does the doorbell support cloud storage?  
A6: Your doorbell support local video storage by TF card . And you can also activate the cloud storage service in the App so as to back up video clips into the cloud server. There is a 7-day-free cloud recording trial service.