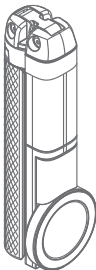


# V7



V7-1



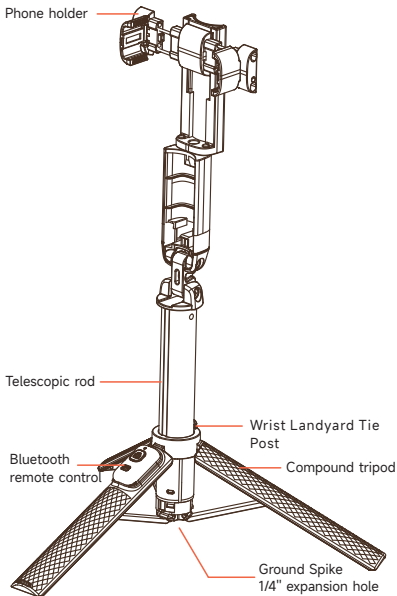
V7-2

Please read this manual carefully before use

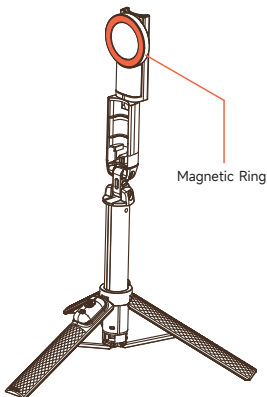
**V7 Multi-Scenario Selfie Stick Tripod User Manual**

Applicable selfie stick models V7-1、V7-2

● **V7-1 Schematic diagram of selfie stick product components**



● **V7-2** Schematic diagram of selfie stick product components



V7-2

※All components except the Magnetic Ring are the same as those of the V7-1 series

## Standard accessories



Instruction Manual \*1



Wrist Lanyard \*1



Ground Spike  
Not Included in  
V7-Mini Series



Magnetic Ring Sticker \*1  
Only Included in  
Magnetic Version

## Optional accessories (need to be purchased separately)



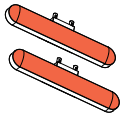
Magnetic Mount \*1



Vacuum Suction Mount \*1

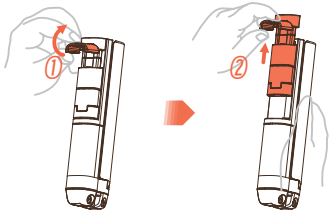


40mm screw \*1  
(Included with the  
optional suction cup)

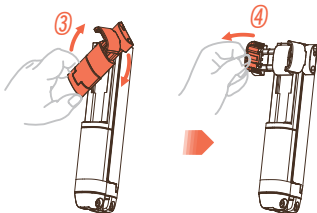


Fill lights \*2

## ● V7-1 Series Phone Clip Usage Instructions

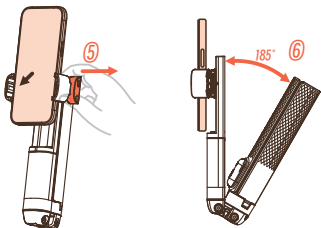


Open the clip and push the slider Up.

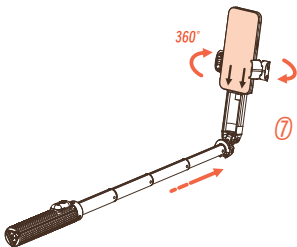


Rotate the slider to open the other side of the clip, and the phone clip is unlocked.

## ● V7-1 Phone Clip Multi-Scenario Selfie Stick Tripod Form

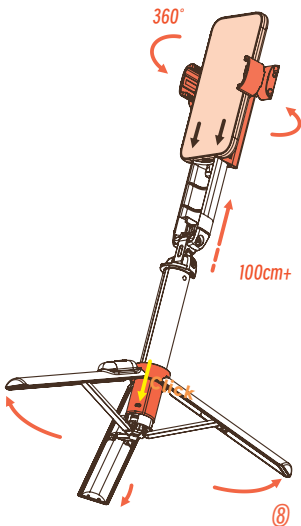


Clamp phone, open handle.



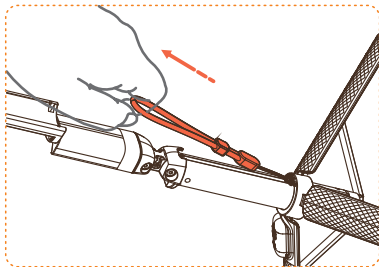
Rotate phone 360°, press down to secure, connect bluetooth remote control, extend pole to use.

- **V7 series tripods can be expanded for use.**

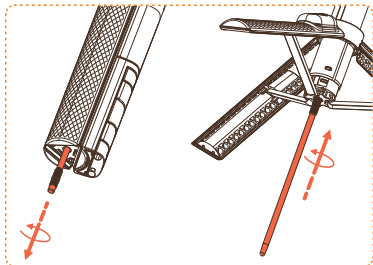


Open tripod, press sleeve to align with aluminum pole marks. Now the bluetooth remote control can be used

- **V7 series tripod: pull-cord quick retraction.**



- **V7 series Installation & Use of Built-in Ground Spike**

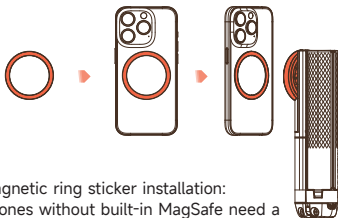


Secures grass, mud, sand; wind-resistant, stable.

※Mini series & not include ground spike.

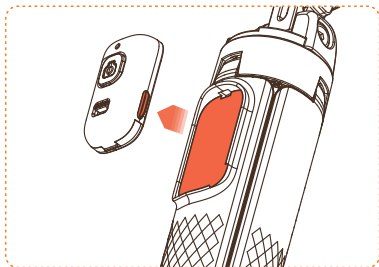


- **V7-2 Magnetic Series Instructions - MagSafe Compatible**



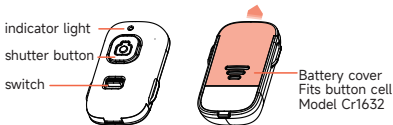
Magnetic ring sticker installation:  
Phones without built-in MagSafe need a magnetic . Peel off its double-sided tape and stick it on the back of the phone case.

- **V7 Bluetooth remote removable for remote shooting.**



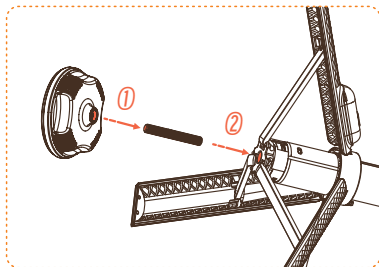
## ● V7 Selfie Device Instructions

1. Power: Toggle to turn remote on/off. Power light blinks for Bluetooth search.
2. Bluetooth pairing: Enable phone Bluetooth, search, tap "V7" to pair; light off when connected.
3. Auto-off (no connection): Remote powers off after ~20 mins idle.
4. Auto-off (connected): Idle ~10 mins → sleep, then ~10 mins → auto-off.
5. Sleep: Press shutter to reconnect.

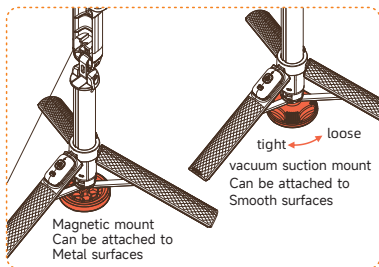


V7 Series Bluetooth Remote Controls

## ● Installation of Suction Cup Accessory (Optional Accessory)



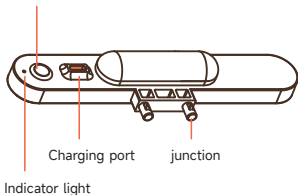
## ● Use of Disk Accessory



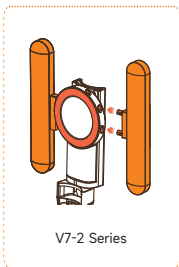
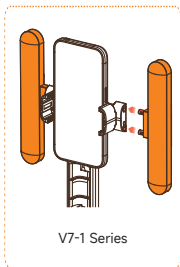
Suction cup + screw fits bracket base hole;  
remove built-in peg first for multiple fixings.

## ● Fill Light Accessory Instructions (Optional Accessory)

Switch \ Color temperature and brightness adjustment



## ● Use of Accessory



※Fill light accessory only for V7 Series.

Align fill light with jack to install; for shooting fill light.

## Parameters

Model	V7-1	V7-2
Name	V7Clip style Selfie stick	V7Magnetic type Selfie stick
fold up Size	36*51*188 MM	59*51*188 MM
Floor - standing height	188~1430 MM	188~1430 MM
Product Weight	277g	292g
Battery Model	CR1632	CR1632

Product Model: Multi-Scenario Selfie Stick Tripod

Product Color: Black/Cyan/Gray

Product Material: Aluminum Alloy/Plastic

Wireless Connection: Bluetooth 5.0

Remote Distance: 10M

Bluetooth Name: V7

Expansion Interface:  $\Phi 5.4$

Default Accessories: Ground Nail/Lanyard

FCC ID:2BRK7-V7-2

MADE IN CHINA

## ● **FCC WARNING**

This device complies with part 15 of the FCC Rules. Operation is subject to the following two conditions: (1) This device may not cause harmful interference, and (2) this device must accept any interference received, including interference that may cause undesired operation.

Note: This equipment has been tested and found to comply with the limits for a Class B digital device, pursuant to part 15 of the FCC Rules. These limits are designed to provide reasonable protection against harmful interference in a residential installation. This equipment generates, uses and can radiate radio frequency energy and, if not installed and used in accordance with the instructions, may cause harmful interference to radio communications. However, there is no guarantee that interference will not occur in a particular installation. If this equipment does cause harmful interference to radio or television reception, which can be determined by turning the equipment off and on, the user is encouraged to try to correct the interference by one or more of the following measures:

## **FCC WARNING**

- Reorient or relocate the receiving antenna.
- Increase the separation between the equipment and receiver.
- Connect the equipment into an outlet on a circuit different from that to which the receiver is connected.
- Consult the dealer or an experienced radio/TV technician for help.

Note: The Grantee is not responsible for any changes or modifications not expressly approved by the party responsible for compliance. such modifications could void the user's authority to operate the equipment.

The device has been evaluated to meet general RF exposure requirement.

This equipment complies with FCC's RF radiation exposure limits set forth for an uncontrolled environment. This device and its antenna(s) must not be co-located or conjunction with any other antenna or transmitter.

The device can be used in portable exposure conditions without restriction.

## — Notes

- 1.Store carefully. Keep fingers out of support feet to avoid pinching.
- 2.Check usage area/restrictions first. No public order violations.
- 3.Do not place on high/uneven surfaces; prevent falling damage.
- 4.Do not use overloaded power; avoid overheating/burned circuit boards.
- 5.Do not disassemble/modify the product.
- 6.Do not hit/throw; may cause internal faults.
- 7.Keep away from low temperature/moist places.
- 8.Do not throw into fire; keep away from fire sources.
- 9.Warning: Contains small parts. Not for children under 3 to use alone.

