

# Skyline Series Ceiling Light Instructions

### I. Product Overview

This colorful Skyline series ceiling light combines cutting-edge lighting technology with innovative design concepts. It's dedicated to creating a comfortable, healthy, and personalized lighting environment. Whether used for home lighting to create a warm and cozy living atmosphere, or in commercial spaces to enhance the style and quality of a space, the Skyline light is perfect for the job. It's more than just a light; it's a symbol of a lifestyle and a pursuit of quality.

### II. Product Features

**Simulate natural spectrum:** Using advanced LED intelligent AI control technology, accurately simulate the spectral distribution of natural sunlight, color rendering index (CRI) is as high as 97 or above, which can truly restore the natural colors of objects, making you feel as if you are in natural light, effectively reducing visual fatigue and protecting the eye health of you and your family.

**Multiple Scene Mode Switching:** A built-in smart chip allows for multiple preset scene modes, such as Dawn Mode, which simulates the soft, warm morning sun to awaken your energy; Clear Sky Mode, which provides bright, clear light perfect for everyday activities; Sunset Mode, which creates a romantic and cozy atmosphere for relaxation after a busy day; and Reading Mode and Sleep Aid Mode, to meet your lighting needs in different scenarios. Switch with the touch of a button for effortless enjoyment.

**Intelligent Dimming and Color Adjustment:** Supports continuous brightness adjustment from 1% to 100%, and CCT color temperature can be freely switched between 2500K (warm white light) and 6500K (cold white light) and (1800K-12000K). The color can be freely adjusted to your preferences and actual needs using the RGB color palette. Freely adjust the most suitable light brightness and color to create a customized lighting environment. It can be easily operated through the matching remote control or mobile app (WeChat mini program); it can also be integrated into the Mi Home ecosystem and OS ecosystem.

**Minimalist Design:** The lamp body is made of high-quality aluminum alloy with a fine matte finish for a delicate texture. It's durable and has excellent heat dissipation. The minimalist and stylish design with sleek lines perfectly blends into any modern minimalist, Nordic-style home or commercial space, creating a striking accent.

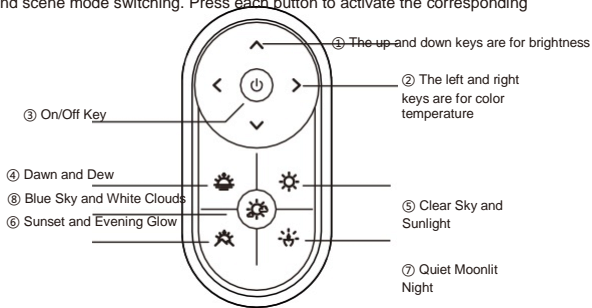
**Convenient Installation and Control:** In addition to ceiling mounting, it offers a variety of mounting options, including suspended and flush mounting. Choose the appropriate mounting method based on your space structure and decorating needs, ensuring simple and convenient installation.

### III. Technical Parameters

Product Specifications: Round  $\varnothing$ 420x86 Round  $\varnothing$ 560x86 Square 600x600x85 Rectangular 900x600x85  
Rated Power: 60W 110W 110W 150W  
Luminous Flux: 3000lm 5500lm 5500lm 7500lm  
Power Supply Voltage: AC 220-240V, 50-60Hz  
Color rendering index (CRI):  $\geq 95$   
Color Temperature Range: 1800K- 12000K  
Dimming Range: 1%-100%  
Color Range: (R)256x(G) 256x(B)256, 16 million colors  
Lamp body material: aluminum alloy + MS/PMMA optical plate  
Protection level: IP40 (for indoor use, to prevent mosquitoes and small particles from entering)

### IV. Instructions

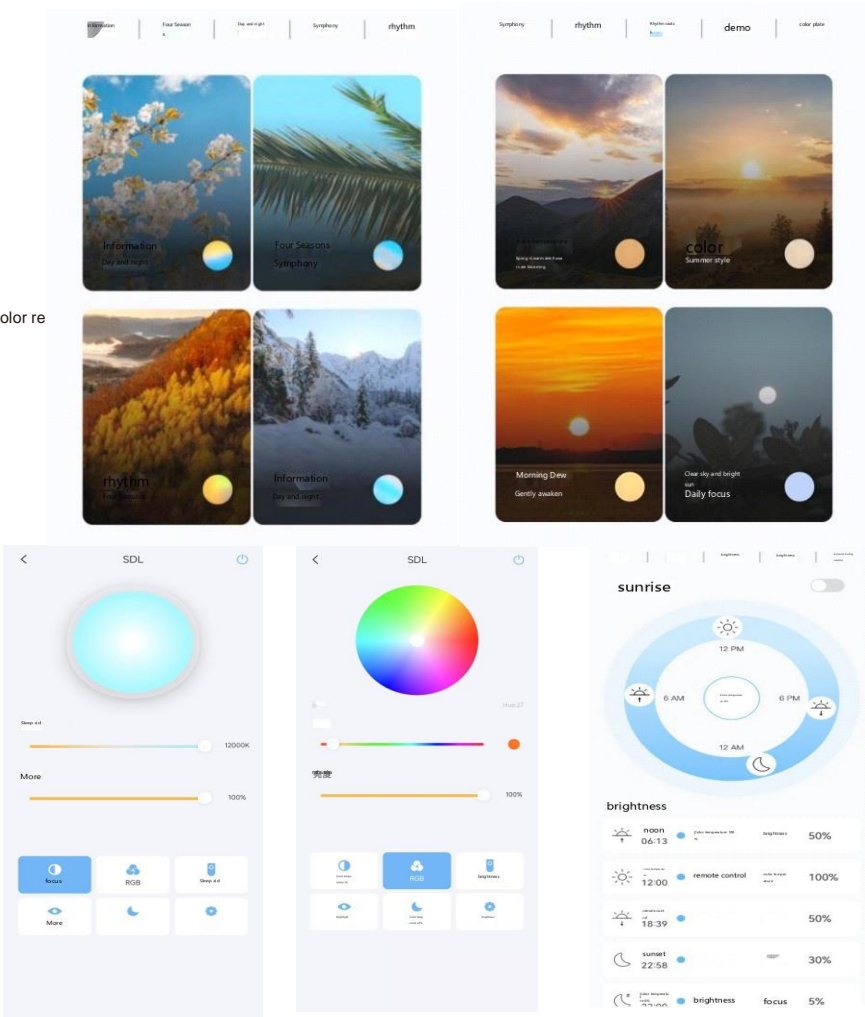
1. Remote Control Operation: The remote control features a power button, brightness adjustment buttons (+ and -), color temperature adjustment buttons (cool and warm), and scene mode switching. Press each button to activate the corresponding function.



#### Button Functions:

- ①: The up and down keys are for brightness + and brightness -
- ②: The left key is for warmer colors, the right key is for cooler colors
- ③: Controls the on/off of devices in the room where the remote control is located
- ④, ⑤, ⑥, ⑦: Morning Dew, Clear Sky, Sunset, Tranquil Moonlit Night
- ⑧: Blue Sky and White Clouds

Note: Clear Sky = Concentration, Tranquil Moonlit Night = Relaxation and Relaxation  
2. Mobile APP operation: Follow the prompts to connect the lamp and mobile phone to the same wireless network, and then you can use your mobile phone to remotely control the lamp, set scene modes, and perform other operations such as timer switching.



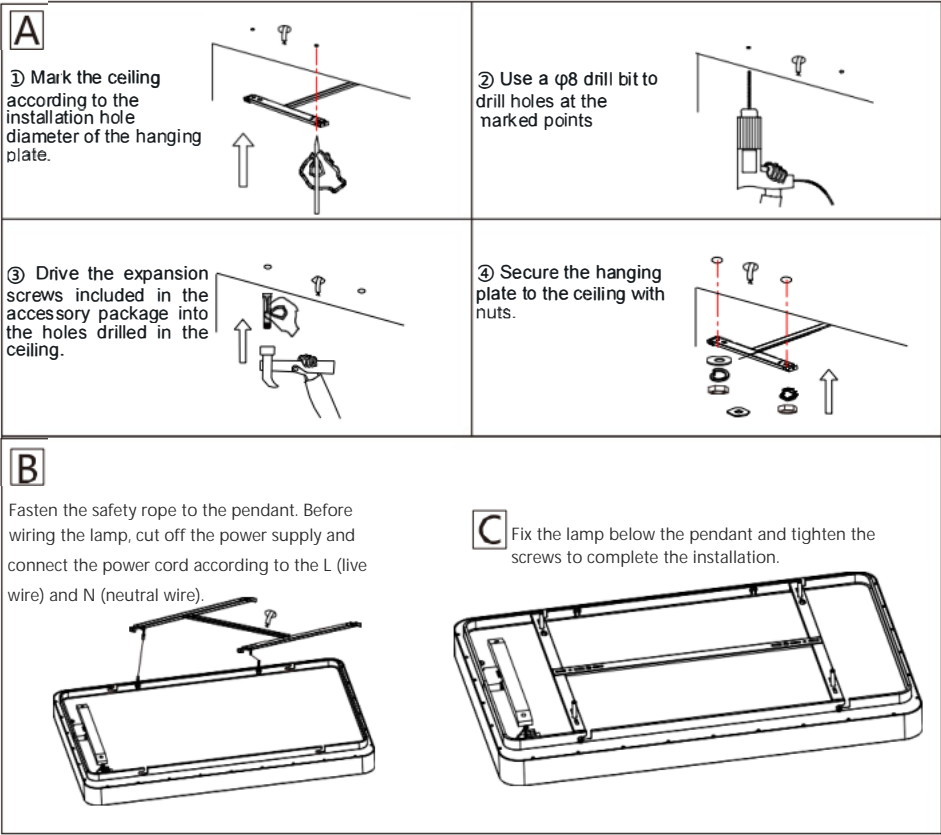
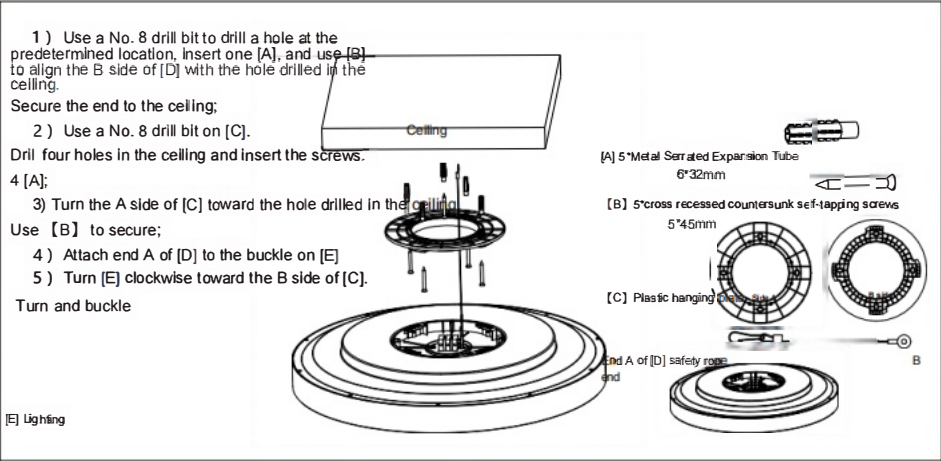
### V. Precautions

- **Installation:** Luminaire installation should be performed by a professional electrician to ensure a secure fit and avoid accidents caused by the luminaire falling due to improper installation. Before installation, please confirm the load-bearing capacity of the ceiling or mounting surface. Do not use a power supply exceeding the rated range (220V  $\pm$  10% ~ 50Hz).
- **Usage Environment:** This lamp is intended for use in dry indoor environments. Do not use in humid, dusty, high-temperature environments, or environments with corrosive gases, as this may affect the lamp's lifespan and performance. Avoid direct exposure to the lamp's light to avoid discomfort.
- **Maintenance:** Clean the surface of the lamp regularly. Gently wipe it with a clean, soft, damp cloth. Do not use chemical cleaners or sharp objects to scratch it. To avoid damaging the surface, if the lamp malfunctions, be sure to disconnect the power supply first. Do not disassemble, repair, or modify the lamp yourself to avoid danger.

Contact professional after-sales service personnel for inspection.

- If the external flexible cable or cord of this lamp is damaged, have it replaced by the manufacturer, its service agent, or similarly qualified personnel to avoid danger.

VI. Installation Diagram



Installation Precautions

一、The following situations are not covered by the warranty::

- 1) Damage caused by improper storage, installation, or use;
- 2) Damage resulting from repairs by service units not designated by our company;
- 3) Use of non - original accessories not produced by our company;
- 4) Damage caused by unauthorized disassembly, modification, or repair;
- 5) Damage due to incorrect use or improper human - factor - related use;
- 6) The product model on the purchase voucher does not match the model of the product to be maintained, or the purchase voucher has been altered;
- 7) Damage caused by irresistible natural disasters;
- 8) Damage to the product due to the power line installation in the customer's home not complying with national electrical installation requirements;
- 9) The qualification label on the back of the lamp body has been torn off;
- 10) Products that are beyond the warranty period.

7. APP installation method



Please scan the QR code above to install

After - Sales Service Card

Name: \_\_\_\_\_ ( Mr./Ms. )

Address and Postcode: \_\_\_\_\_

Contact Phone: \_\_\_\_\_

Model of Purchased Product: \_\_\_\_\_

**After - Sales Service Records**

Date	After - Sales Service Records	Service Personnel

Our company promises to you: Under normal conditions and in accordance with the requirements of the instruction manual, if this product malfunctions, you are entitled to a three - year free warranty service.

The following shall be filled in by the distributor

Sales Date: \_\_\_\_\_

Distributor: \_\_\_\_\_

Address: \_\_\_\_\_

Phone: \_\_\_\_\_

Guangdong Shikang Lighting Technology Co.,Ltd

Building D, No. 1, Yongxing North Road, Henglan Town, Zhongshan City, Guangdong Province

Consultation Hotline: 0760 - 85328618

This device complies with part 15 of the FCC Rules. Operation is subject to the following two conditions:  
(1) This device may not cause harmful interference, and (2) this device must accept any interference received, including interference that may cause undesired operation.

Any Changes or modifications not expressly approved by the party responsible for compliance could void the user's authority to operate the equipment.

**Note:** This equipment has been tested and found to comply with the limits for a Class B digital device, pursuant to part 15 of the FCC Rules. These limits are designed to provide reasonable protection against harmful interference in a residential installation. This equipment generates uses and can radiate radio frequency energy and, if not installed and used in accordance with the instructions, may cause harmful interference to radio communications. However, there is no guarantee that interference will not occur in a particular installation. If this equipment does cause harmful interference to radio or television reception, which can be determined by turning the equipment off and on, the user is encouraged to try to correct the interference by one or more of the following measures:

- Reorient or relocate the receiving antenna.
- Increase the separation between the equipment and receiver.
- Connect the equipment into an outlet on a circuit different from that to which the receiver is connected.
- Consult the dealer or an experienced radio/TV technician for help.

This equipment complies with FCC radiation exposure limits set forth for an uncontrolled environment. This equipment should be installed and operated with minimum distance 20cm between the radiator & your body