

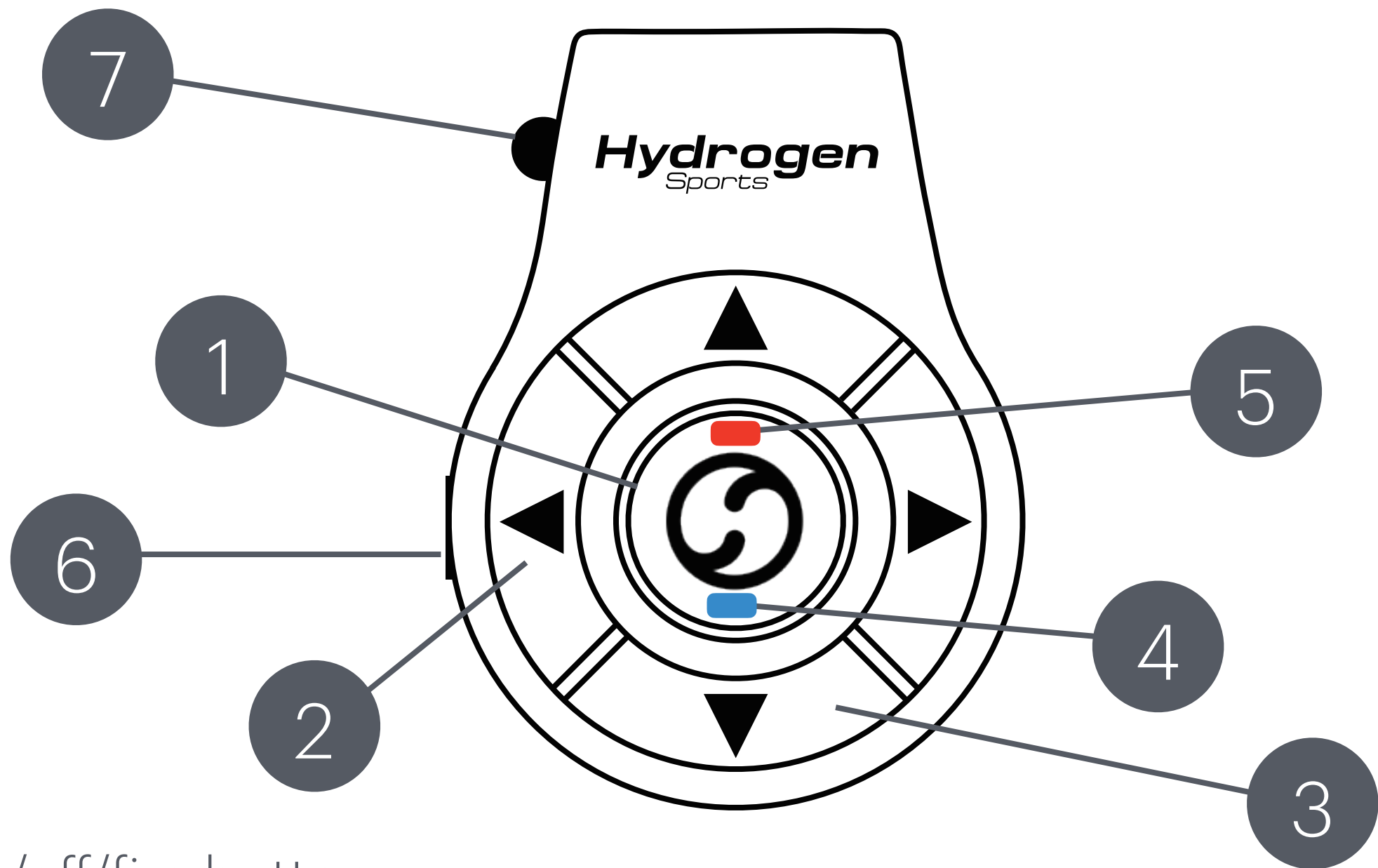
App Controller Remote



Important: The App Controller **does not** communicate directly with your ball machine. It controls the app on your phone, allowing basic interactions without constantly getting out your phone.

The App Controller Remote allows you to start and stop programs on your Proton, fire individual shots in *coach* or *manual* mode, and adjust the aim of your shots. The aim adjustment is similar to the calibration feature in the app, however the adjusted values are reset whenever the Proton is powered off.

Product Overview



1. On/off/fire button

- **hold 3 seconds** to power on or off
- click to *fire* in coach mode, or to *pause/start* a program
- **long press** (>1 sec) to stop and park the machine

2. Left/right aim adjustment. **Long press** for larger increments.

3. Up/down aim adjustment. **Long press** for larger increments.

4. Blue LED (under the center button) for power on and pairing.

5. Red LED (under the center button) for power off and pairing.

6. USB-C charging port

7. Keychain clip. The keychain clip may be removed, but the audio jack underneath is not functional.

Pairing (one-time)

Unlike the Proton or Electron, your App Controller Remote requires a **one-time pairing** event through the general Settings menu of your phone (not inside the Hydrogen Sports app).

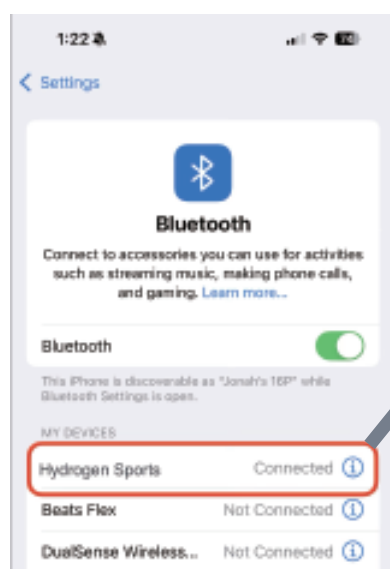
To pair:



1. Power ON the unit by pressing the center button for 3 seconds until the blue and red LEDs begin blinking.

2. In the Bluetooth menu on your phone, search for a device called **Hydrogen Sports**.

3. Select the device and follow the prompts to complete pairing. The LED will flash blue when pairing is successful.



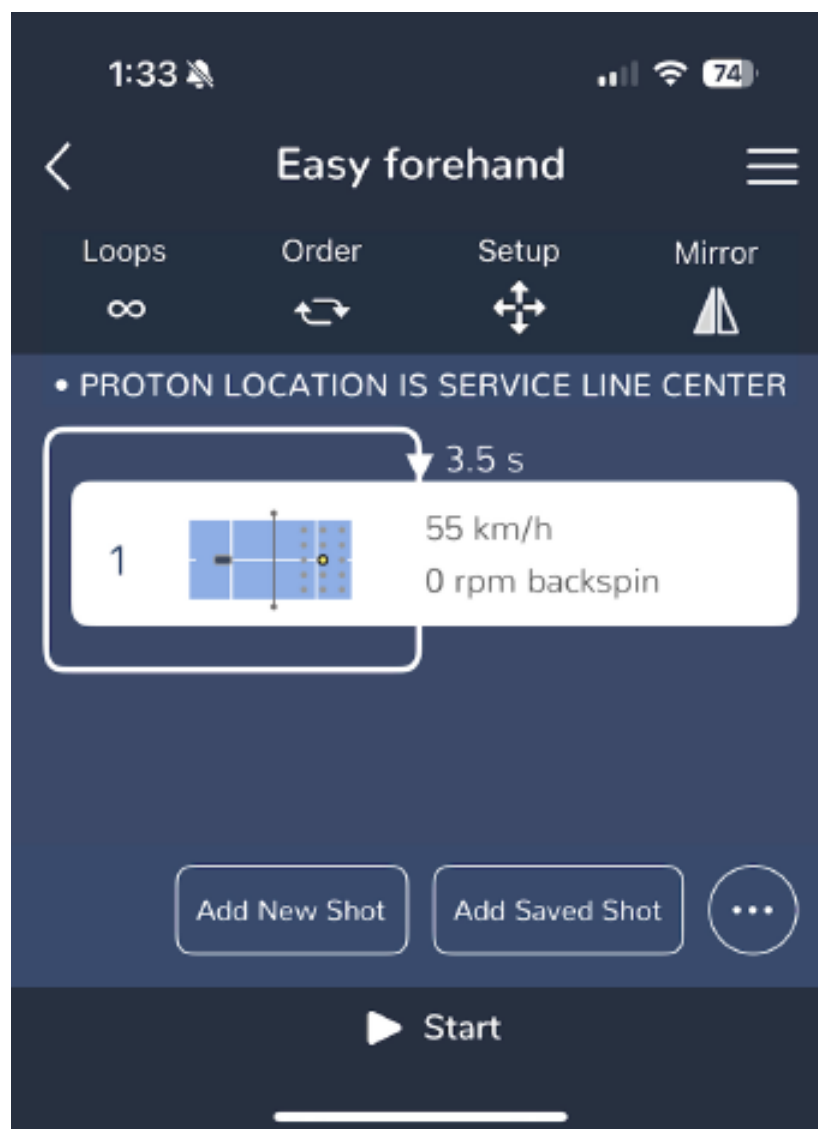
Connecting

Once the remote is paired with your phone, it will **reconnect automatically** whenever in range of the phone and powered on. You can check the connection status in your phone's Bluetooth menu.

Use Example

Once the App Controller Remote is paired and connected, select the program you wish to use in the Hydrogen Sports app on your phone. You may also select a shot in *coach mode* or *manual mode*. Press *play* on the remote to start the program.

1



2



Please note you must keep the phone screen on and the app open to use the remote!

Troubleshooting

Please check the connection status in the Bluetooth menu of your phone. Possible issues include:

1. Your phone has gone to sleep, or is no longer on the program control page.
2. The remote has auto-connected to another nearby phone to which it was previously paired. Find the phone and choose “forget this device” or disable Bluetooth.
3. The remote is out of battery or off. Each key press should cause the blue LED to blink if the remote is on.

Power and Charging

Use the USB-C plug to charge the remote. The red LED will flash continuously when power is low.



Charging



Fully charged



Low battery

Specifications

Version: 1.0

Operating Distance: 15-30m

Battery: Lithium rechargeable (100 mAh)

Charging Time: 1.5 hr

Run time: up to 20 hours (depending on use)

Shutdown time: 5 minutes after disconnecting

Standby time (powered off): ~4-5 months if fully charged

FCC Warning

This device complies with Part 15 of the FCC Rules. Operation is subject to the following two conditions:

(1) This device may not cause harmful interference, and (2) this device must accept any interference received, including interference that may cause undesired operation.

NOTE 1: This equipment has been tested and found to comply with the limits for a Class B digital device, pursuant to part 15 of the FCC Rules. These limits are designed to provide reasonable protection against harmful interference in a residential installation. This equipment generates, uses and can radiate radio frequency energy and, if not installed and used in accordance with the instructions, may cause harmful interference to radio communications. However, there is no guarantee that interference will not occur in a particular installation. If this equipment does cause harmful interference to radio or television reception, which can be determined by turning the equipment off and on, the user is encouraged to try to correct the interference by one or more of the following measures:

- Reorient or relocate the receiving antenna.
- Increase the separation between the equipment and receiver.
- Connect the equipment into an outlet on a circuit different from that to which the receiver is connected.
- Consult the dealer or an experienced radio/TV technician for help.

NOTE 2: Any changes or modifications to this unit not expressly approved by the party responsible for compliance could void the user's authority to operate the equipment.

The device has been evaluated to meet general RF exposure requirement. The device can be used in portable exposure condition without restriction.

