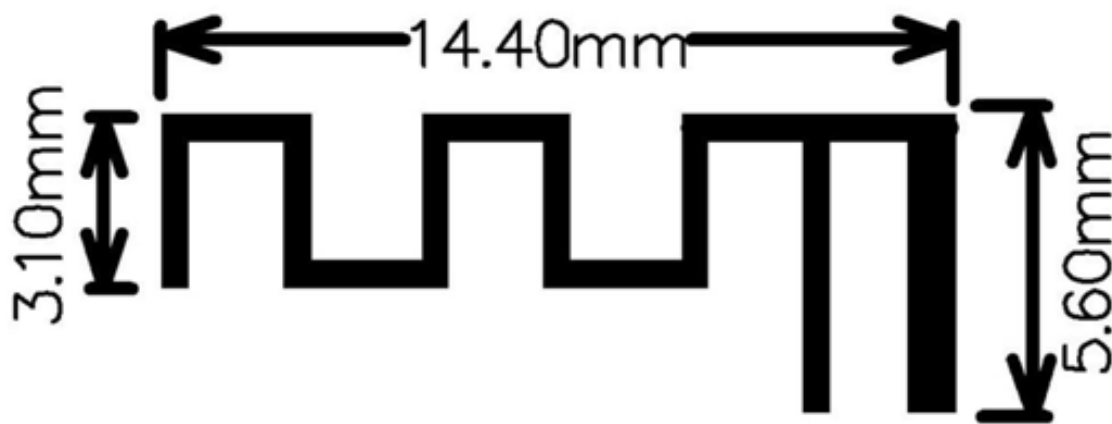


1. Antenna Description:

Antenna type	PCB antenna
Model	797
Frequency range	2400-2500MHz
Manufacturer	Shenzhen Wanaka Technology Co., Ltd.
Adress	2011, Building B, Sunshine Shinkansen Home, No. 1021, Dongmen South Road, Jianan Community, Nanhu Street, Luohu District, Shenzhen, China
ANT Peak Gain	1.50 dBi

2. Antenna Photo:



3. Test Equipment & Conditions

### 3.1 Test instrument

VSWR is tested using Agilent E5071B connected to a hand mechanism, and the status is free space.

### 3.2 Test environment and methods

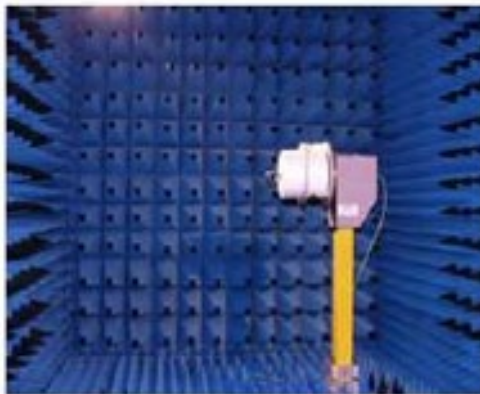
Dark room specifications: ETS-743

TD-SCDMA test equipment: StarPoint SP6010/Agilent 8960

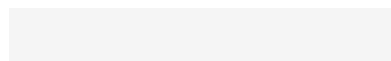
LTE-TDD/FDD-SCDMA test equipment: StarPoint SP8011/CMW500

WCDMA/GSM/CDMA test equipment: Agilent 8960

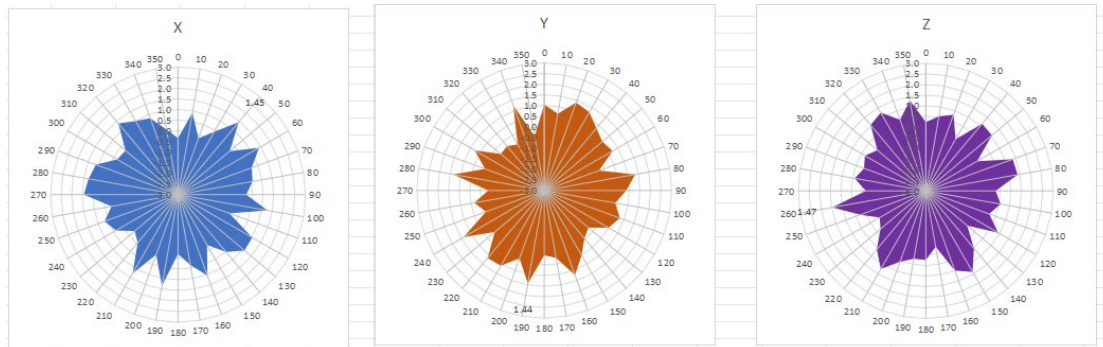
Passive efficiency testing equipment: Agilent Technologies E5071B



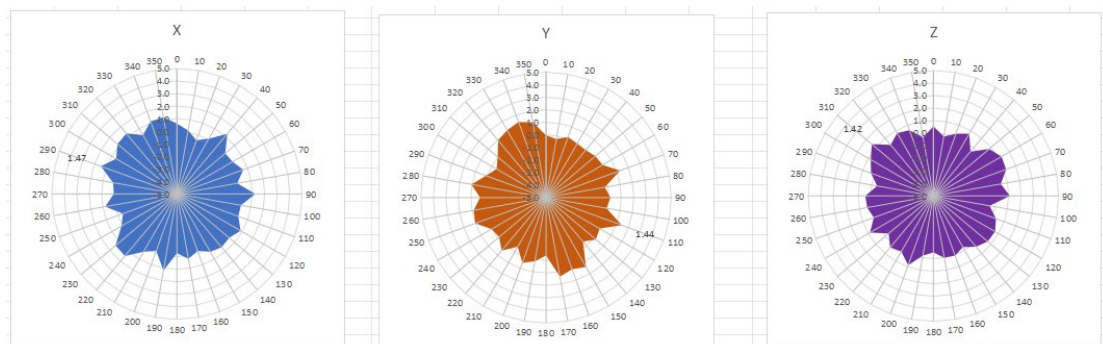
## 4 . Antenna Radiation Pattern



## 2400MHz



## 2450MHz



## 2500MHz

