



FCC TEST REPORT

FCC ID: 2BRDW-YC-REMOTE

Product	:	REMOTE CONTROL
Model Name	:	YC-remote-RF-A,YC-remote-RF-B,YC-remote-RF-C,YC-remote-RF-D, YC-remote-RF-E,YC-remote-RF-F,YC-remote-RF-G,YC-remote-RF-H, YC-remote-RF-J
Brand	:	N/A
Report No.	:	PTC25070400101E-FC01
Prepared for		
Quanzhou Xugechi Wangluo Keji Youxian Gongsi		
Room 2005, Building 4, Longda Sijilanwan, No. 146 Taiyuan, Xialutian Village, Heshi Town Quanzhou Luojiang District 362000 Fujian Province CN		
Prepared by		
Precise Testing & Certification Co., Ltd		
Building 1, No. 6, Tongxin Road, Dongcheng Street, Dongguan, Guangdong, China		



1. TEST RESULT CERTIFICATION

Applicant's name : Quanzhou Xugechi Wangluo Keji Youxian Gongsi

Address : Room 2005, Building 4, Longda Sijilanwan, No. 146 Taiyuan, Xialutian Village, Heshi Town Quanzhou Luojiang District 362000 Fujian Province CN

Manufacture's name : Quanzhou Viition Gifts Co.,Ltd.

Address : Heyang Ind'l Park, Heshi Town, Luojiang Dist.,Quanzhou, Fujian, China.

Product : REMOTE CONTROL

Model : YC-remote-RF-A,YC-remote-RF-B,YC-remote-RF-C,YC-remote-RF-D, YC-remote-RF-E,YC-remote-RF-F,YC-remote-RF-G,YC-remote-RF-H, YC-remote-RF-J

Standards : FCC CFR47 Part 15 Section 15.231

Test procedure : ANSI C63.10:2013

Test Date : Jul. 15, 2025 to Jul. 23, 2025

Date of Issue : Jul. 23, 2025

Test Result : Pass

This device described above has been tested by PTC, and the test results show that the equipment under test (EUT) is in compliance with the FCC requirements. And it is applicable only to the tested sample identified in the report.

This report shall not be reproduced except in full, without the written approval of PTC, this document may be altered or revised by PTC, personal only, and shall be noted in the revision of the document.

Test Engineer:

A handwritten signature in black ink, appearing to read 'Jack Zhou'.

Jack Zhou / Engineer

Technical Manager:

A handwritten signature in black ink, appearing to read 'Simon Pu'.

Simon Pu / Manager



Contents

	Page
2 TEST SUMMARY.....	4
3 GENERAL INFORMATION	5
3.1 GENERAL DESCRIPTION OF E.U.T.....	5
3.2 TEST MODE.....	5
3.3 TEST SITE	5
3.4 DESCRIPTION OF SUPPORT UNITS.....	6
4 EQUIPMENT DURING TEST	7
4.1 EQUIPMENTS LIST.....	7
4.2 MEASUREMENT UNCERTAINTY	7
5 CONDUCTED EMISSION.....	8
5.1 E.U.T. OPERATION.....	8
5.2 EUT SETUP	8
5.3 TEST SET-UP (BLOCK DIAGRAM OF CONFIGURATION).....	9
5.4 MEASUREMENT PROCEDURE	9
5.5 CONDUCTED EMISSION LIMIT	9
5.6 MEASUREMENT DESCRIPTION.....	9
5.7 CONDUCTED EMISSION TEST RESULT	9
6 PULSED OPERATION.....	10
6.1 TEST SETUP.....	10
7 RADIATED SPURIOUS EMISSIONS	14
7.1 EUT OPERATION	15
7.2 TEST SETUP.....	16
7.3 SPECTRUM ANALYZER SETUP.....	17
7.4 TEST PROCEDURE	18
7.5 SUMMARY OF TEST RESULTS.....	19
8 20DB BANDWIDTH MEASUREMENT.....	23
8.1 TEST PROCEDURE	23
8.2 TEST SETUP.....	23
8.3 TEST RESULT.....	24
9 ANTENNA REQUIREMENT.....	25
10 TEST SETUP	26
11 EUT PHOTOS.....	27



2 Test Summary

Test Items	Test Requirement	Result
Conducted Emissions	15.207	N/A
Transmission Cease Time	15.231(a)	PASS
Radiated Emission	15.209 15.205(a)	PASS
Pulsed operation	15.35(c)	PASS
Outside of Band Emission	15.231(b) 15.205 15.209	PASS
20dB Bandwidth	15.215(c)	PASS
Antenna Requirement	15.203	PASS
Remark: N/A: Not Applicable		



3 General Information

3.1 General Description of E.U.T.

Product Name : REMOTE CONTROL

Model Name : YC-remote-RF-A,YC-remote-RF-B,YC-remote-RF-C,YC-remote-RF-D,
YC-remote-RF-E,YC-remote-RF-F,YC-remote-RF-G,YC-remote-RF-H,
YC-remote-RF-J

Operation Frequency: : 433.93MHz

Antenna installation: : PCB Antenna

Antenna Gain: : 0 dBi

Type of Modulation : GFSK

Power supply : DC 3V

Hardware version : P-00539 LXZK-RF2101C V1.0

Software version : P-00539 LXZK-RF2101C V1.0

3.2 Test Mode

All test mode(s) and condition(s) mentioned were considered and evaluated respectively by performing full tests, the worst data were recorded and reported.

Modulation	Test mode	Frequency	\	\
ASK	continuously Transmitting	433.93MHz	\	\

3.3 Test Site

Precise Testing & Certification Co., Ltd

Address: Building 1, No. 6, Tongxin Road, Dongcheng Street, Dongguan, Guangdong, China

FCC Registration Number: 790290

A2LA Certificate No.: 4408.01

IC Registration Number: 12191A

FCC Designation Number: CN1219



Report No.: PTC25070400101E-FC01

3.4 Description of Support Units

Equipment	Model No.	Series No.	Parameters
N/A	N/A	N/A	N/A



4 Equipment During Test

4.1 Equipments List

Item	Kind of Equipment	Manufacturer	Type No.	Serial No.	Last calibration	Calibration Interval
1	EMI Test Receiver	Rohde & Schwarz	ESCI7	101671	Aug. 15,2024	1 Year
2	EMC Analyzer (9k~26.5GHz)	Agilent	E4407B	MY45109572	Aug. 15,2024	1 Year
3	Trilog Broadband Antenna	SCHWARZBEC K	VULB9160	9160-3355	Sep. 10,2024	1 Year
4	Amplifier	SCHWARZBEC K	BBV 9475	9745-0013	Aug. 15,2024	1 Year
5	Horn Antenna	SCHWARZBEC K	BBHA9120D	9120D-1246	Aug. 15,2024	1 Year
6	Coaxial Cable(below 1GHz)	LARGE	CALB1	-	Aug. 15,2024	1 Year
7	Coaxial Cable(above 1GHz)	LARGE	CALB2	-	Aug. 15,2024	1 Year
8	Loop Antenna	Schwarzbeck	FMZB 1519	012	Aug. 15,2024	1 Year

4.2 Measurement Uncertainty

Parameter	Uncertainty
RF output power, conducted	±1.0dB
Power Spectral Density, conducted	±2.2dB
Radio Frequency	± 1 x 10 ⁻⁶
Bandwidth	± 1.5 x 10 ⁻⁶
Time	±2%
Duty Cycle	±2%
Temperature	±1°C
Humidity	±5%
DC and low frequency voltages	±3%
Conducted Emissions (150kHz~30MHz)	±3.64dB
Radiated Emission(9kHz~30MHz)	±3.15dB
Radiated Emission(30MHz~1GHz)	±5.03dB
Radiated Emission(1GHz~25GHz)	±4.74dB

5 Conducted Emission

Test Requirement:	: FCC CFR 47 Part 15 Section 15.207
Test Method	: ANSI C63.10: 2013
Test Result	: PASS
Frequency Range	: 150kHz to 30MHz
Class/Severity	: Class B

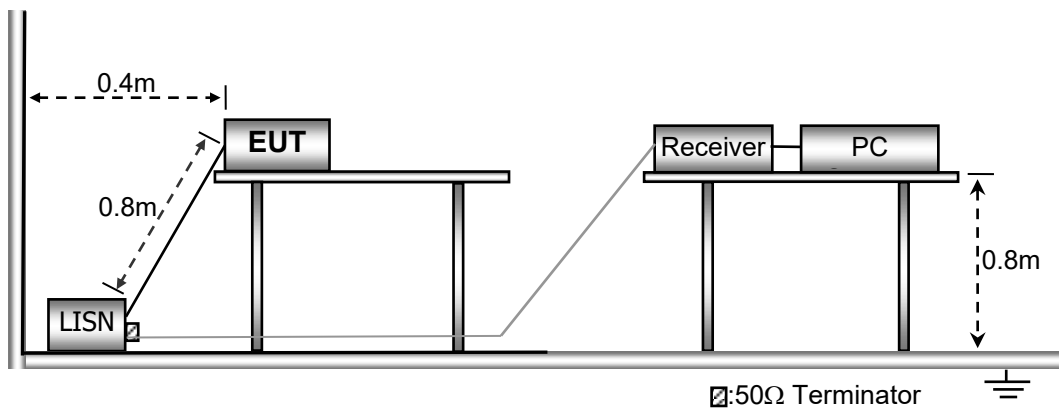
5.1 E.U.T. Operation

Operating Environment :

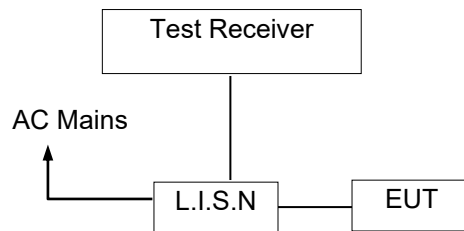
Temperature	: 23.9 °C
Humidity	: 51.4 % RH
Atmospheric Pressure	: 101.21kPa

5.2 EUT Setup

The conducted emission tests were performed using the setup accordance with the ANSI C63.10:2013.



5.3 Test SET-UP (Block Diagram of Configuration)



5.4 Measurement Procedure

1. The EUT was placed on a table, which is 0.8m above ground plane.
2. Maximum procedure was performed on the six highest emissions to ensure EUT compliance.
3. Repeat above procedures until all frequency measured was complete.

5.5 Conducted Emission Limit

Conducted Emission

Frequency(MHz)	Quasi-peak	Average
0.15-0.5	66-56	56-46
0.5-5.0	56	46
5.0-30.0	60	50

Note:

1. The lower limit shall apply at the transition frequencies
2. The limit decreases in line with the logarithm of the frequency in the range of 0.15 to 0.50MHz.

5.6 Measurement Description

The maximised peak emissions from the EUT was scanned and measured for both the Live and Neutral Lines. Quasi-peak & average measurements were performed if peak emissions were within 6dB of the average limit line.

5.7 Conducted Emission Test Result

N/A

Note: Powered by AAA batteries.

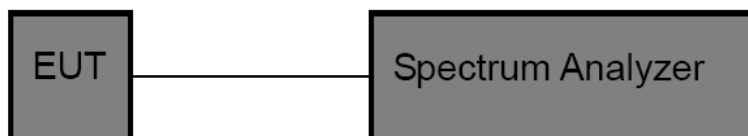


6 Pulsed Operation

The duty cycle was determined by the following equation:

To calculate the actual field intensity, the duty cycle correction factor in decibel is needed for later use and can be obtained from following conversion

6.1 Test Setup



Duty Cycle(%)=Total On interval in a complete pulse train/ Length of a complete pulse train * %

Duty Cycle Correction Factor (dB)=20 * Log₁₀(Duty Cycle(%))

Total transmission time(ms)	1.25*8+0.43*17=17.31
Length of a complete transmission period(ms)	50.94
Duty Cycle(%)	33.98
Duty Cycle Correction Factor(dB)	-9.38

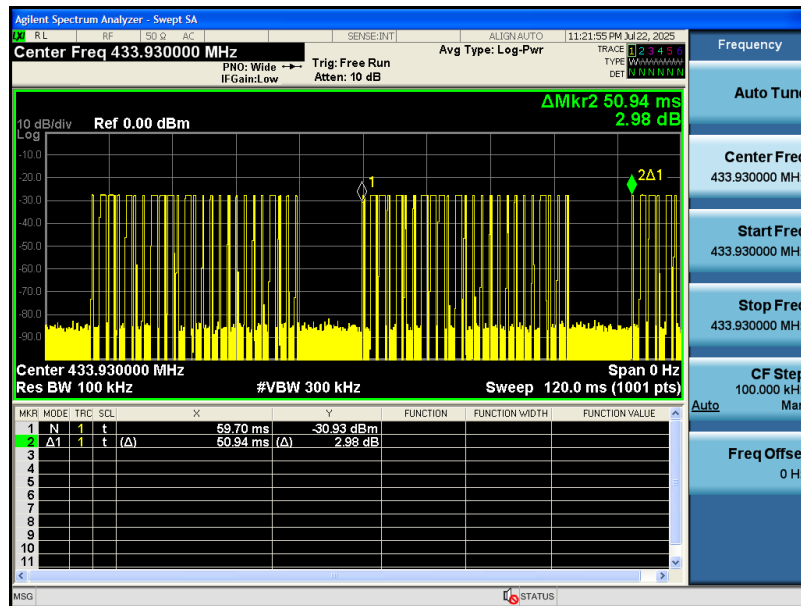
Refer to the duty cycle plot (as below), This device meets the FCC requirement.

Length of a complete pulse train:

Remark: FCC part15.35(c) required that a complete pulse train is more than 0.1 seconds, the measured field strength shall be determined from the average absolute voltage during a 0.1 second interval during which the field strength is at its maximum value.

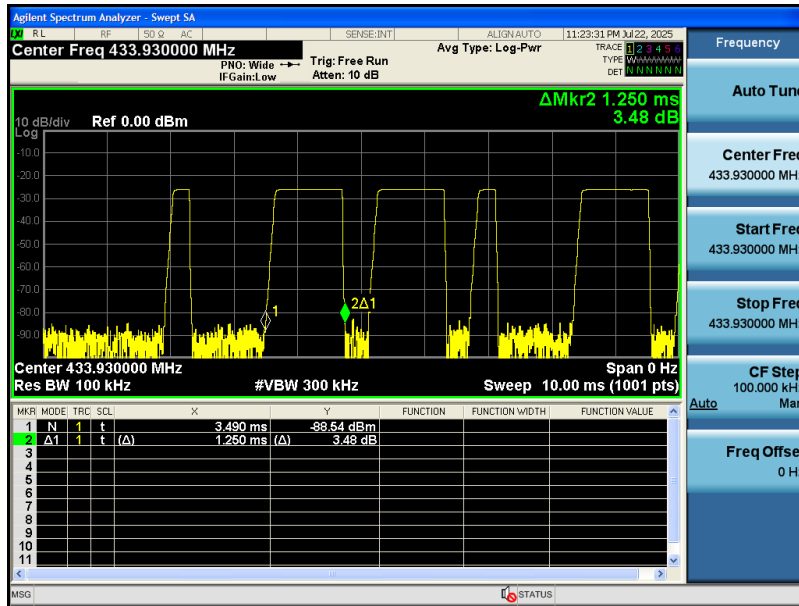


Tp

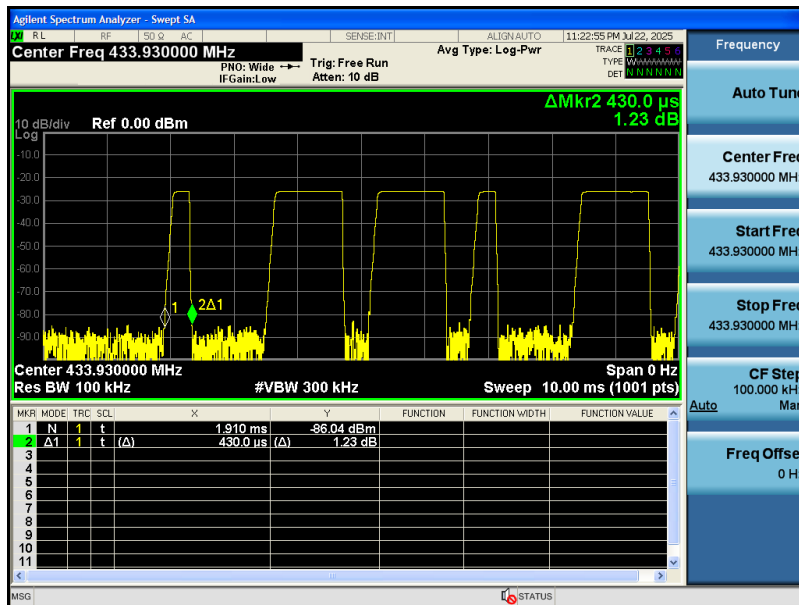




Pulse 1



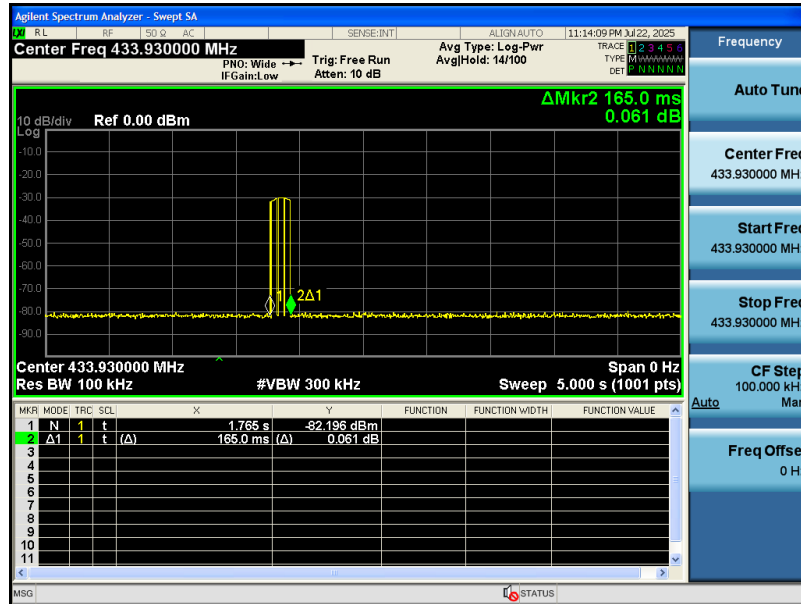
Pulse 2





FCC Part15.231 (a) (1) A manually operated transmitter shall employ a switch that will automatically deactivate the transmitter within not more than 5 seconds of being released.

(2)A transmitter activated automatically shall cease transmission within 5 seconds after activation.





7 Radiated Spurious Emissions

Test Requirement: : FCC CFR47 Part 15 Section 15.231 & 15.209 & 15.205
 Test Method: : ANSI C63.10:2013
 Test Result: : PASS
 Measurement Distance: : 3m
 Limit: : See the follow table

Frequency (MHz)	Field Strength		Field Strength Limit at 3m Measurement Dist	
	uV/m	Distance (m)	uV/m	dBuV/m
0.009 ~ 0.490	$2400/F(\text{kHz})$	300	$10000 * 2400/F(\text{kHz})$	$20\log^{(2400/F(\text{kHz}))} + 80$
0.490 ~ 1.705	$24000/F(\text{kHz})$	30	$100 * 24000/F(\text{kHz})$	$20\log^{(24000/F(\text{kHz}))} + 40$
1.705 ~ 30	30	30	$100 * 30$	$20\log^{(30)} + 40$
30 ~ 88	100	3	100	$20\log^{(100)}$
88 ~ 216	150	3	150	$20\log^{(150)}$
216 ~ 960	200	3	200	$20\log^{(200)}$
Above 960	500	3	500	$20\log^{(500)}$

The limits on the field strength of the spurious emissions in the above table are based on the fundamental frequency of the intentional radiator. Spurious emissions shall be attenuated to the average (or, alternatively, CISPR quasi-peak) limits shown in this table or to the general limits shown in § 15.209, whichever limit permits a higher field strength.

In addition to the provisions of § 15.205, the field strength of emissions from intentional radiators operated under this section shall not exceed the following:

Fundamental frequency (MHz)	Field strength of fundamental (microvolts/meter)	Field strength of spurious emissions (microvolts/meter)
40.66-40.70	2,250	225
70-130	1,250	125
130-174	1,250 to 3,750	125 to 375
174-260	3,750	375
260-470	3,750 to 12,500	375 to 1250
Above 470	12,500	1,250

Note: Where F is the frequency in MHz, the formulas for calculating the maximum permitted fundamental field strengths are as follows: for the band 130-174 MHz, $\mu\text{V/m}$ at 3 meters = $56.81818(F) - 6136.3636$; for the band 260-470 MHz, $\mu\text{V/m}$ at 3 meters = $41.6667(F) - 7083.3333$. The maximum permitted unwanted emission level is 20 dB below the maximum permitted fundamental level.



Report No.: PTC25070400101E-FC01

7.1 EUT Operation

Operating Environment :

Temperature: : 23.5 °C

Humidity: : 51.1 % RH

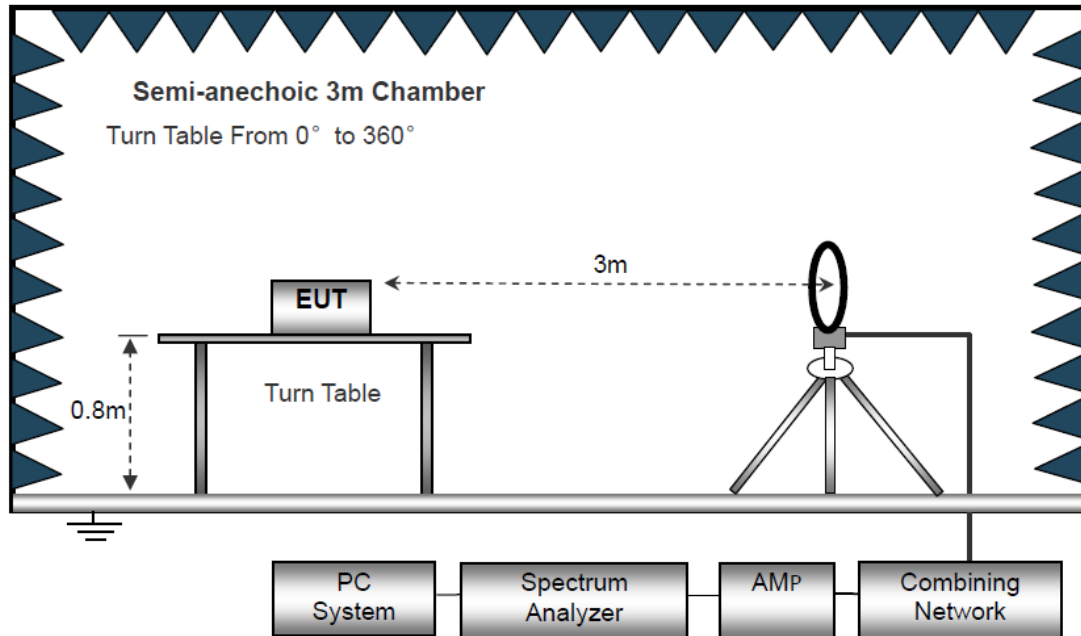
Atmospheric Pressure: : 101.2kPa

EUT Operation : : Refer to section 3.2

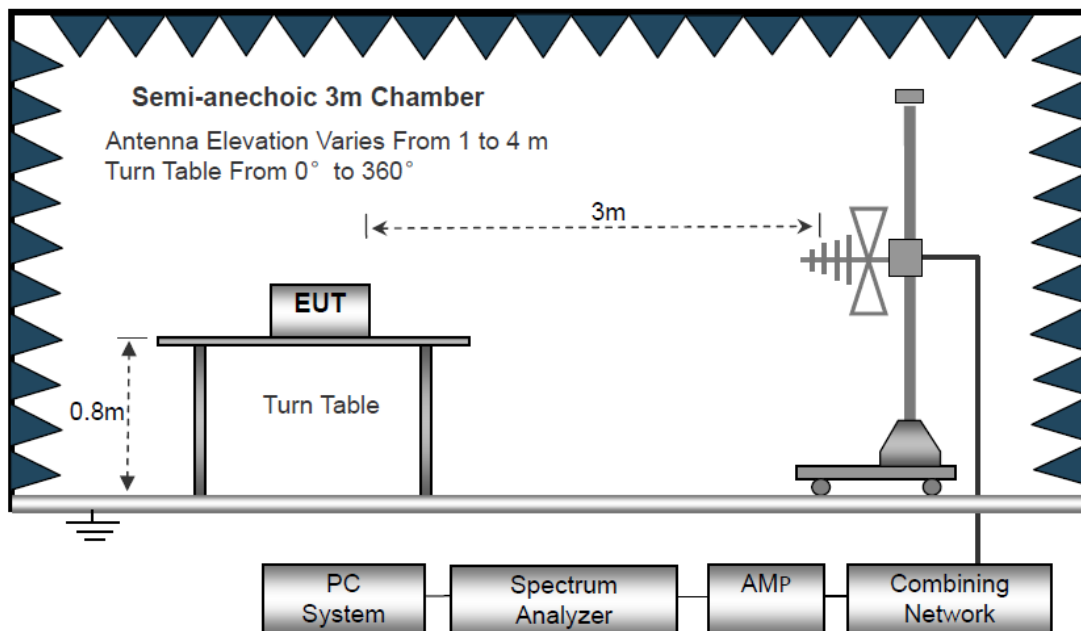
7.2 Test Setup

The radiated emission tests were performed in the 3m Semi- Anechoic Chamber test site

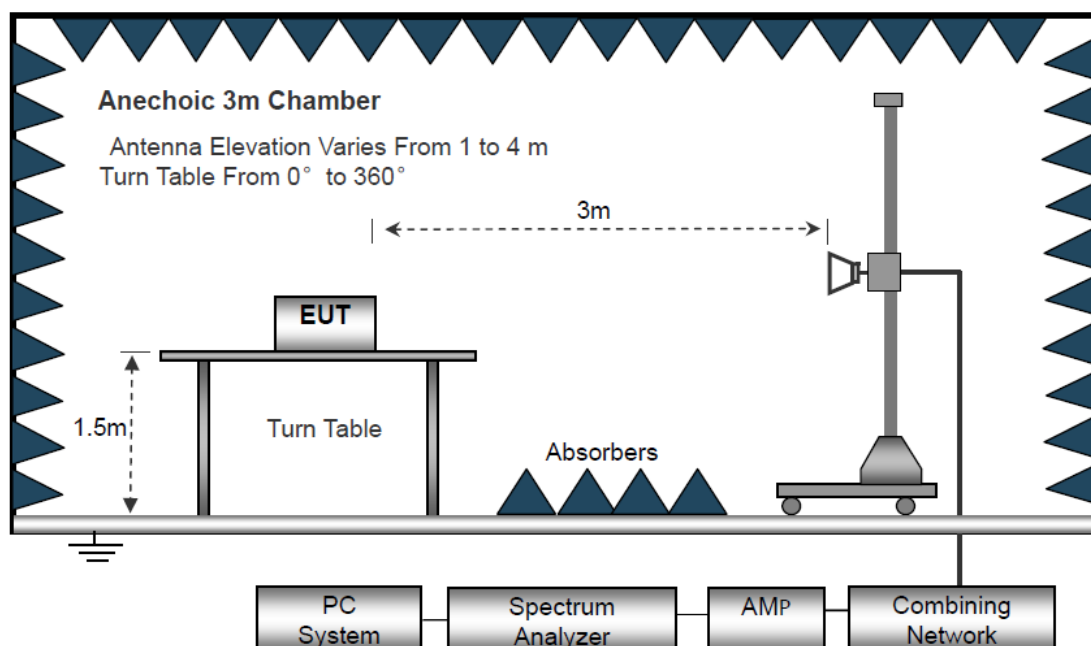
The test setup for emission measurement below 30MHz



The test setup for emission measurement from 30 MHz to 1 GHz.



The test setup for emission measurement above 1 GHz



7.3 Spectrum Analyzer Setup

Below 30MHz

IF Bandwidth : 10kHz

Resolution Bandwidth : 10kHz

Video Bandwidth : 10kHz

30MHz ~ 1GHz

Detector : PK

Resolution Bandwidth : 100kHz

Video Bandwidth : 300kHz

Detector : QP

Resolution Bandwidth : 120kHz

Video Bandwidth : 300kHz

Above 1GHz

Detector : PK

Resolution Bandwidth : 1MHz

Video Bandwidth : 3MHz

Detector : AV

Resolution Bandwidth : 1MHz

Video Bandwidth : 10Hz



7.4 Test Procedure

1. The EUT is placed on a turntable, which is 0.8m or 1.5m above ground plane.
2. The turntable shall be rotated for 360 degrees to determine the position of maximum emission level.
3. EUT is set 3m away from the receiving antenna, which is moved from 1m to 4m to find out the maximum emissions. The spectrum was investigated from the lowest radio frequency signal generated in the device, without going below 9 kHz, up to the tenth harmonic of the highest fundamental frequency or to 40 GHz, whichever is lower.
4. Maximum procedure was performed on the six highest emissions to ensure EUT compliance.
5. And also, each emission was to be maximized by changing the polarization of receiving antenna both horizontal and vertical.
6. Repeat above procedures until the measurements for all frequencies are complete.
7. The radiation measurements are tested under 3-axes(X,Y,Z) position(X denotes lying on the table, Y denotes side stand and Z denotes vertical stand), After pre-test, It was found that the worse radiation emission was get at the X position. So the data shown was the X position only.
8. The test above 1GHz must be use the fully anechoic room, and the test below 1GHz use the half anechoic room



7.5 Summary of Test Results

Test Frequency: Below 30MHz

The amplitude of spurious emissions from the radiator which are attenuated more than 20dB below the limit need not be reported.

Test Frequency: 30MHz ~ 5GHz

All applicable test modes have been tested with TX mode(433.93MHz)

Test Result of Fundamental Emission:

Frequency (MHz)	Reading (dBuV)	Factor (dB)	Peak Value (dBμV/m)	PDCF	Average value (dBuV/m)	Average Limit (dBμV/m)	Margin Limit (dB)	Polarization
433.93	84.80	12.32	72.48	-9.38	63.10	80.8	17.70	H
433.93	80.74	12.32	68.42	-9.38	59.04	80.8	21.76	V

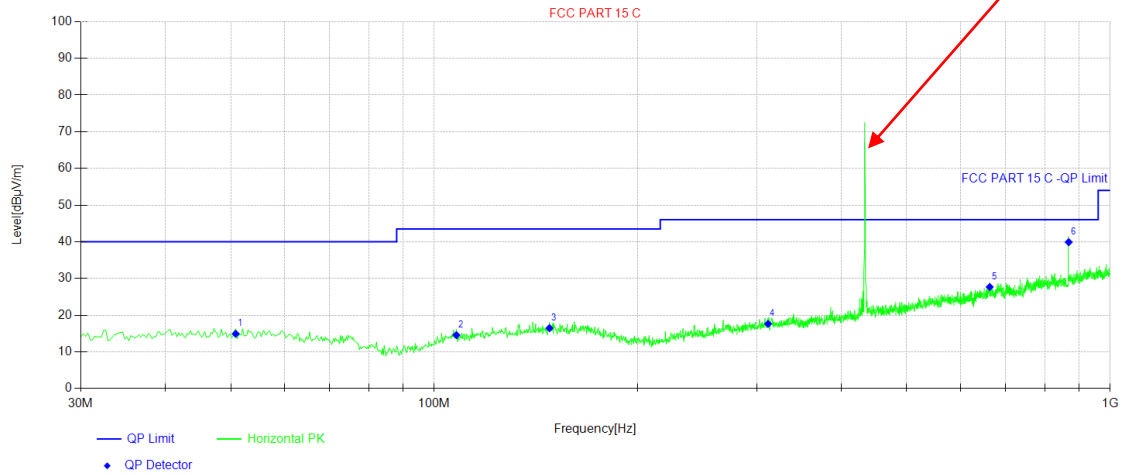
Note: PDCF is the abbreviation of duty cycle factor, $DCF = 20 \log(\text{Duty cycle})$.



Test Result of Spurious Emissions:

Blow 1GHz:

Antenna Polarization: Horizontal



Final Data List[QP]

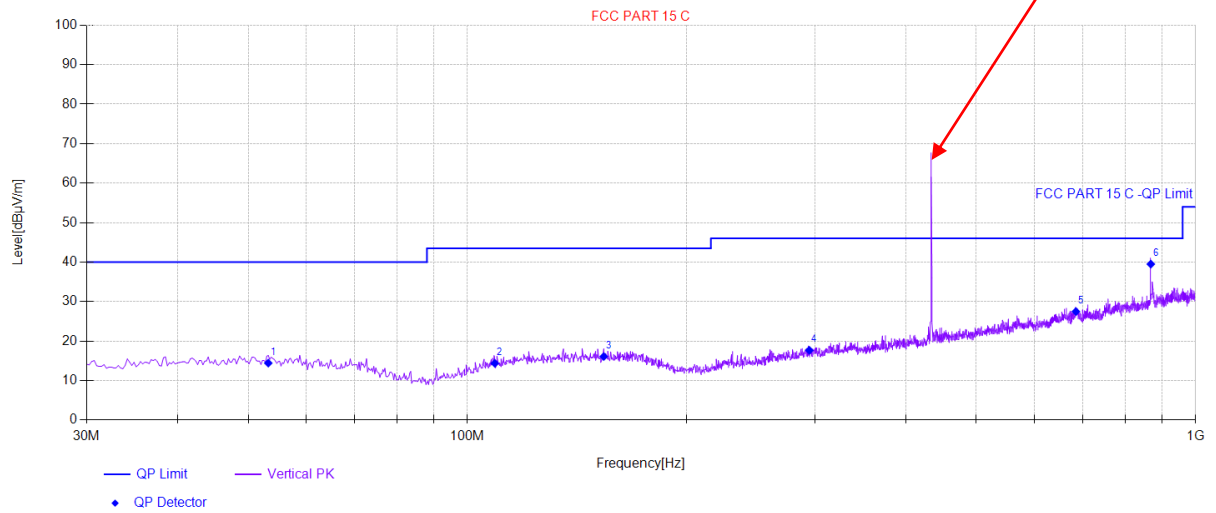
NO.	Freq. [MHz]	QP Reading [dBμV/m]	Factor [dB]	QP Value [dBμV/m]	QP Limit [dBμV/m]	QP Margin [dB]	Polarity	Verdict
1	50.86	25.64	-10.72	14.92	40.00	25.08	Horizontal	PASS
2	107.84	26.63	-12.07	14.56	43.50	28.94	Horizontal	PASS
3	148.10	26.09	-9.62	16.47	43.50	27.03	Horizontal	PASS
4	311.79	26.01	-8.38	17.63	46.00	28.37	Horizontal	PASS
5	663.41	27.83	-0.15	27.68	46.00	18.32	Horizontal	PASS
6	868.08	36.38	3.53	39.91	46.00	6.09	Horizontal	PASS

Remark: Emission Level = Reading + Cable Loss + ANT Factor - AMP Factor



The Fundamental Frequency

Antenna Polarization: Vertical



Final Data List[QP]								
NO.	Freq. [MHz]	QP Reading [dBμV/m]	Factor [dB]	QP Value [dBμV/m]	QP Limit [dBμV/m]	QP Margin [dB]	Polarity	Verdict
1	53.28	25.3	-10.87	14.43	40.00	25.57	Vertical	PASS
2	109.06	26.35	-11.98	14.37	43.50	29.13	Vertical	PASS
3	153.92	25.33	-9.23	16.10	43.50	27.40	Vertical	PASS
4	294.81	26.65	-8.98	17.67	46.00	28.33	Vertical	PASS
5	684.99	26.94	0.54	27.48	46.00	18.52	Vertical	PASS
6	868.08	35.97	3.53	39.50	46.00	6.50	Vertical	PASS

Remark: Emission Level = Reading + Cable Loss + ANT Factor - AMP Factor



Above 1GHz:

NO.	Freq. [MHz]	PK Reading [dBμV]	Factor [dB]	PDCF	PK Level [dBμV/m]	PK Limit [dBμV/m]	PK Margin [dB]	Result	Polarity	Detector
1	1301.76	51.81	-11.6	/	40.21	74	33.79	PASS	H	PK
2	1735.68	54.44	-7.98	/	46.46	74	27.54	PASS	H	PK
3	2169.6	53.20	-6.99	/	46.21	74	27.79	PASS	H	PK
4	2603.52	56.09	-4.31	/	51.78	74	22.22	PASS	H	PK
5	3037.44	50.42	-3.5	/	46.92	74	27.08	PASS	H	PK
6	3471.36	51.34	-0.38	/	50.96	74	23.04	PASS	H	PK
7	1301.76	57.27	-11.6	/	45.67	74	28.33	PASS	V	PK
8	1735.68	54.64	-7.98	/	46.66	74	27.34	PASS	V	PK
9	2169.6	54.86	-6.99	/	47.87	74	26.13	PASS	V	PK
10	2603.52	51.44	-4.07	/	47.37	74	26.63	PASS	V	PK
11	3037.44	49.70	-1.91	/	47.79	74	26.21	PASS	V	PK
12	3471.36	49.07	1.25	/	50.32	74	23.68	PASS	V	PK

NO.	Freq. [MHz]	PK Reading [dBμV]	Factor [dB]	PDCF	AV Level [dBμV/m]	AV Limit [dBμV/m]	AV Margin [dB]	Result	Polarity	Detector
1	1301.76	51.81	-11.6	-9.38	30.83	54	23.17	PASS	H	AV
2	1735.68	54.44	-7.98	-9.38	37.08	54	16.92	PASS	H	AV
3	2169.6	53.2	-6.99	-9.38	36.83	54	17.17	PASS	H	AV
4	2603.52	56.09	-4.31	-9.38	42.40	54	11.6	PASS	H	AV
5	3037.44	50.42	-3.5	-9.38	37.54	54	16.46	PASS	H	AV
6	3471.36	51.34	-0.38	-9.38	41.58	54	12.42	PASS	H	AV
7	1301.76	57.27	-11.6	-9.38	36.29	54	17.71	PASS	V	AV
8	1735.68	54.64	-7.98	-9.38	37.28	54	16.72	PASS	V	AV
9	2169.6	54.86	-6.99	-9.38	38.49	54	15.51	PASS	V	AV
10	2603.52	51.44	-4.07	-9.38	37.99	54	16.01	PASS	V	AV
11	3037.44	49.7	-1.91	-9.38	38.41	54	15.59	PASS	V	AV
12	3471.36	49.07	1.25	-9.38	40.94	54	13.06	PASS	V	AV

Remark:

1. The field strength is calculated by adding the Antenna Factor, Cable Factor and Preamplifier.

The formula is as follows is as follows:

Final Test Level = Receiver Reading + Correct Factor



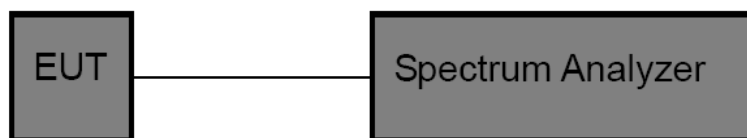
8 20dB Bandwidth Measurement

Test Requirement	:	FCC Part15.231(c)
Test Method	:	FCC Part15.231(c)
Test Mode	:	Refer to section 3.2
Limit	:	The bandwidth of the emission shall be no wider than 0.25% of the center frequency for devices operating above 70 MHz and below 900 MHz. For devices operating above 900 MHz, the emission shall be no wider than 0.5% of the center frequency.

8.1 Test Procedure

1. Remove the antenna from the EUT and then connect a low RF cable from the antenna port to the spectrum;
2. Set the spectrum analyzer: RBW = 1% to 5% of the OBW, VBW = three times the RBW.

8.2 Test Setup

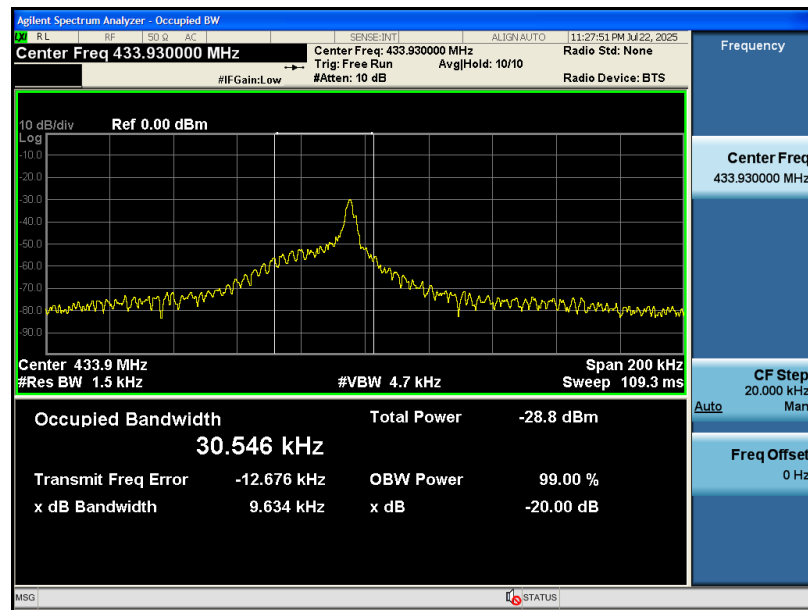




8.3 Test Result

Test Frequency (MHz)	20dB Bandwidth (kHz)	Limit (kHz)	Result
433.93	9.634	1084.80	pass

Test plots





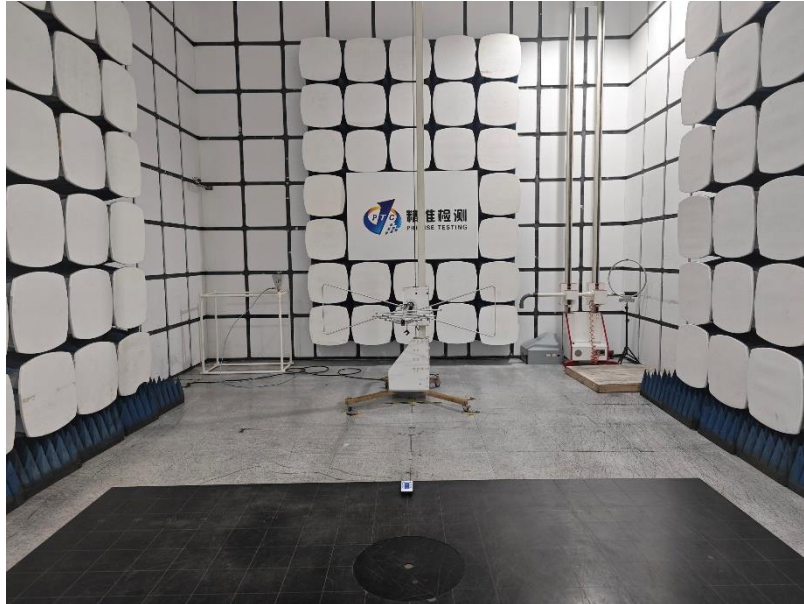
Report No.: PTC25070400101E-FC01

9 Antenna Requirement

According to the FCC part15.203, a transmitter can only be sold or operated with antennas with which it was approved. This product has an PCB Antenna which meet the requirement of this section.

10 Test Setup

Radiated Spurious Emissions
From 30MHz-1000MHz



Above 1GHz

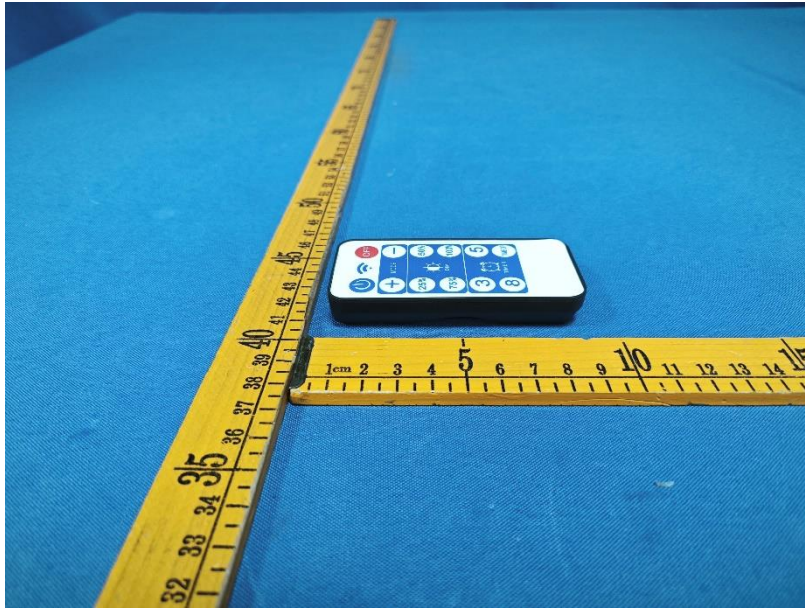




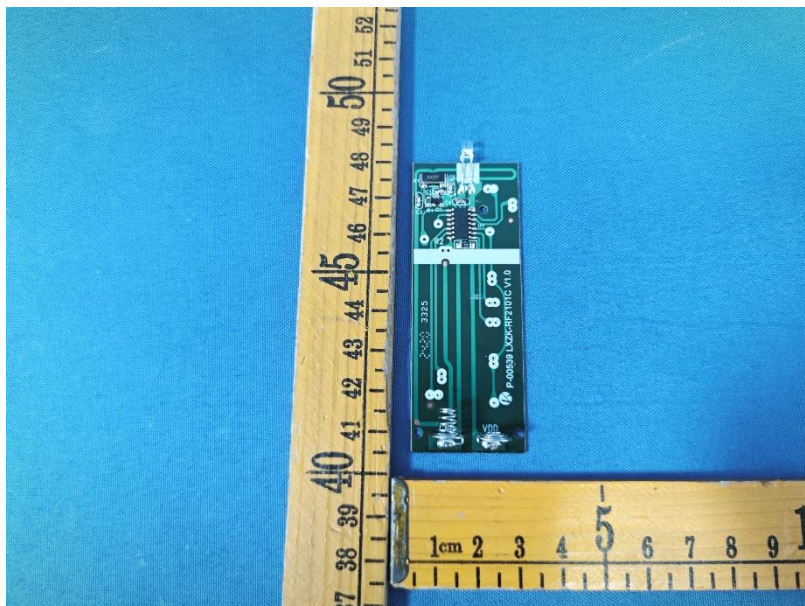
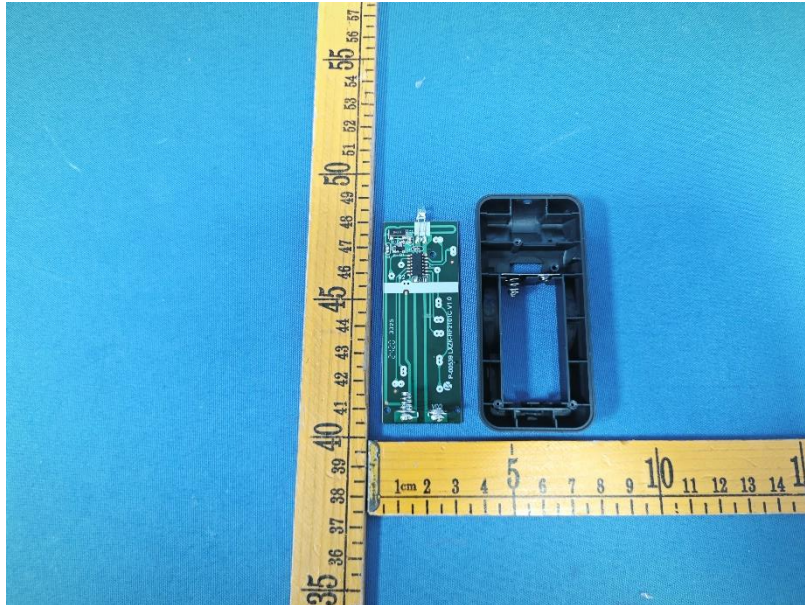
11 EUT Photos

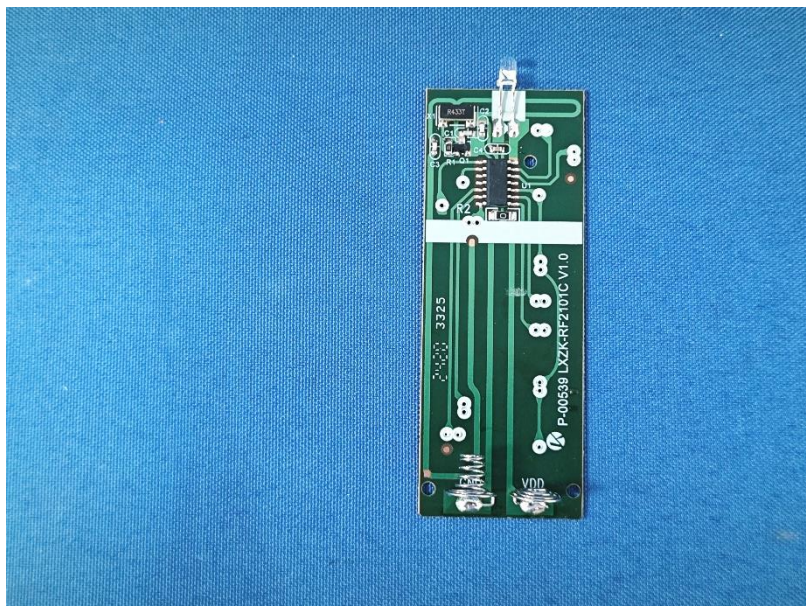


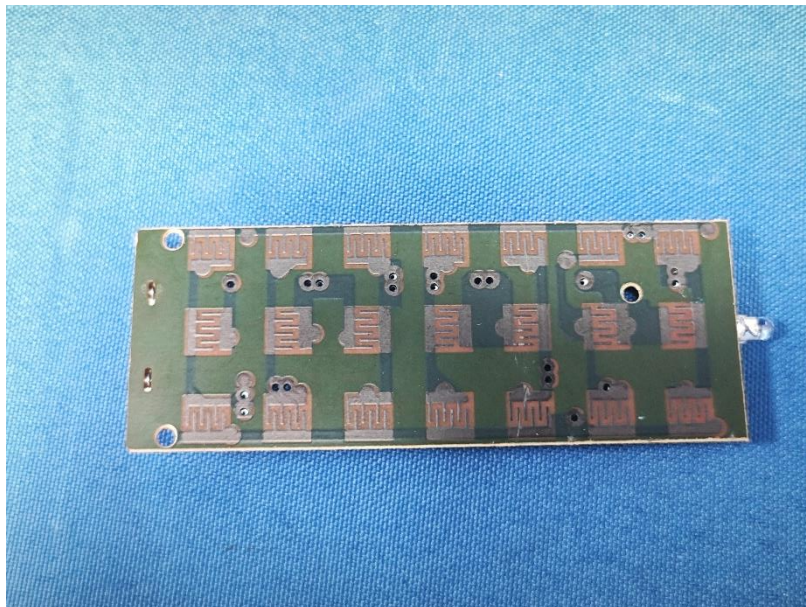
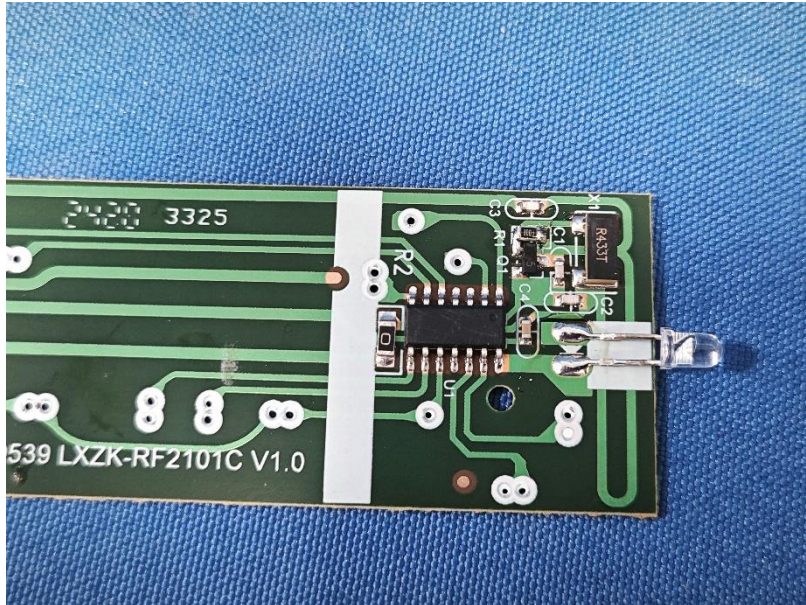












*****THE END REPORT*****