

# HZ Biometric Pistol Safe User Manual



Welcome to get HZ Biometric Pistol Safe!

For optimal security and safe operation, please take a moment to review this user manual before using your new safe. Keep the manual handy for future reference.

If you have any questions, feel free to contact us at [hz-box@outlook.com](mailto:hz-box@outlook.com) .We're happy to help!

**HZ-BOX-1**

## Package Contents

- Gun Safe x 1
- Mechanical Keys x 2
- Mounting Screws x 2
- Setting Screwdriver x 1
- 18650-2000mah x 1
- Heavy Steel Tethering Cable x 1
- USB Backup Power Supply Cable X1



# Product Diagram



# IMPORTANT - Please Read Before Using!

Never leave a mechanical key in the safe - if the combination is forgotten or the fingerprint is not valid, store it in another secure location.

## How to unlock the safe from factory settings (initial use)?

- ▲ In the initial factory state, the batteries are not installed in the safe and must be unlocked using the mechanical key or the code "000000".
- ▲ After opening the safe with the mechanical key, you will need to install the 1 batteries provided, as shown in the picture below, paying careful attention to the direction of the batteries marked in the battery compartment and the +/- polarity on the batteries.
- ▲ It is not possible to open the safe with the fingerprint reader in the initial factory state. Fingerprints must be registered before the fingerprint reader can open the safe.



Step1 : Unlock with mechanical key



Step2 : Install the included 1 batteries. Paying close attention to the battery orientate marked in the compartment and +/- poles on the batteries.

Following setup, the safe can be unlocked by the 3 following methods:



Mechanical Key Unlock



Fingerprint Reader Unlock



Password Unlock

## 1. Setup with tools

This tool is specifically designed to be used to press 3 recessed buttons to set fingerprints, passwords and time settings. If this tool is missing, please find a similar sized tool!



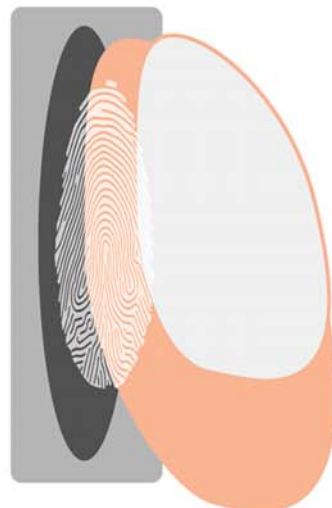
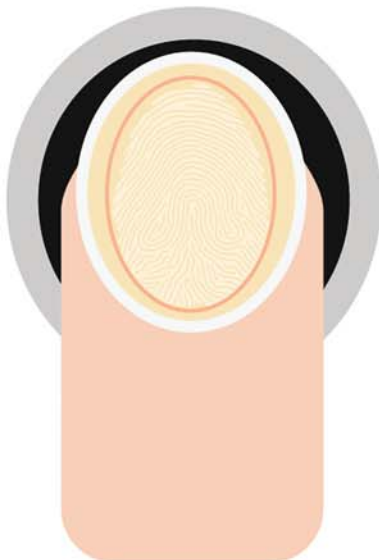
Setup Tool



Set Area

## 2. Registering Fingerprints:

(1) You can enter up to 100 fingerprints. Starting with a clean, dry finger, place the flat pad of the fingerprint over the center of the reader as shown in the image below. It is recommended to register more than one fingerprint and/or the same finger more than once for smoother and faster unlocking.





(2) Use the Setup Tool to briefly press the "Fingerprint" button in the setup area and then quickly release it. The fingerprint green light and the keypad will light up pink. If the enrollment is successful, the pink light status disappears and the setup status exits.



Briefly press "Fingerprint" button



Press your finger

### 3. Clear fingerprint enrollment:

Using the setup tool, press the fingerprint button for 5 seconds. The fingerprint reader will light up blue and a buzzer will be heard twice, indicating that all enrollments have been cleared.



#### 4. Password entry:

- (1) Only one set of passwords can be entered.
- (2) Using the setup tool, short press the "PASSWORD" button in the setup area and quickly release it, the keypad will light up pink to indicate that the password entry is ready. Enter the 6-digit password and repeat once, the buzzer will emit two short beeps to indicate successful password entry.



Briefly press "PASSWORD" button



Set Password

#### 5. Clearing Passwords

Please note that for security reasons, only one set of passwords can be set for this machine and cannot be cleared, only overwritten.

The default password is 123456, after setting a new password, the original password will no longer be available.



If you need to set a new password, please refer to the above procedure.

## 6. Setting the time:

Use the Setup Tool to click the Time/Voice button and the time display will begin flashing, indicating that time entry is ready.

The time display is in the 24-hour format; for example, 1:23 p.m. is 13:23 in the 24-hour format. use the keypad to enter 1323 in sequence. You can press the Time/Voice button to exit the Setup utility or wait 10 seconds until the screen closes and the time will be set.



Mechanical Key Unlock



Fingerprint Reader Unlock



Password Unlock

## 7. Setting up sounds

Turn off sound: Press the "Time/Sound" button of the setting tool for 5 seconds, the mute symbol will appear in the upper left corner of the screen, and then all operation sounds will be turned off

Open sound: also press the "Time/Sound" button of the setting tool for 5 seconds, the mute symbol will disappear from the upper left corner of the screen, and accompanied by two short beeps from the buzzer, then the operation beep will be opened

New machines default to the state of turning on the operating beep, toggle the sound function, and so on.





#### 8. Low Battery Warning

When the battery icon on the display shows one cell, the battery should be replaced as soon as possible.



#### 9. External Power Supply:

If the batteries become fully depleted and the mechanical keys are not available, the included USB-C cable can be connected to the port on the side of the unit to provide power to the unit for unlocking and other operations. An AC power adapter (not included) is required for this feature.

Note: Power supplied through the USB-C port will not charge the batteries. This feature is only used as temporary power for operation when the batteries are depleted.



## 10. Steel Cable Installation:

- a. Unscrew the nut from round end
- b. Wrap the steel cable around a stationary object
- c. Insert the round end into hole in unit
- d. Tighten the nut from the inside of the unit onto the cable end



## Warranty and Customer Service

Thank you for purchasing the HZSAFE Biometric Pistol Safe, This safe is made to ensure the greatest safety and satisfaction, Please fully read the contents of this manual and save it for future reference, If any assistance is needed, please contact us by e-mail at [hz-box@outlook.com](mailto:hz-box@outlook.com)

### 1. One year warranty

The original purchaser is guaranteed for a period of one year from date of purchase against defects in material or workmanship. If any or all of the product is damaged due to defects in materials or workmanship, we will, at our own discretion repair or replace the product for the original purchaser. For warranty claims, please contact us by e-mail at [hz-box@outlook.com](mailto:hz-box@outlook.com) with original order number,

### 2. Warranty limitations

HZsafe is not responsible for any direct, indirect, incidental, or other losses including property damage (loss of unit or items stored in the unit), data loss, lost income, or loss of profits.

## APP Important Notes

Installation for Apple (iOS) Devices: Download the app from the official Apple App Store. Search for **HZSAFE**

Installation for Android Devices: Scan the QR code included in the manual OR visit this link:

**<https://www.pgyer.com/hzsafebox>**

Connection Range: Keep the device within 15-20 meters (50-65 feet).

Range may vary depending on your environment, so be aware.



Android version  
Scan and download



**HZsafe**

**please note:** After connecting device, the device will keep screen displaying under standby mode if you do not exit app or keep app in background. Device will follow app instruction anytime. Hence, please turn off app after you quit using device then the device will enter sleep mode after 15 seconds to avoid excessive battery loss and affect standby time.  
The included battery is rechargeable battery. Unneed to uninstall is after first use.




## NOTE - Please Read Before Using!

Never leave a mechanical key in the safe - if you forgot password or the fingerprint is not valid, you still open the box by keys. Hence, store keys outside the box.

### How to unlock the safe from factory settings (initial use)?

▲ In the initial factory state, the battery is not installed in the safe and must be unlocked using the mechanical key or the password "**123456**".

▲ After opening the safe with the mechanical key, you will need to install battery provided, as shown in the picture below, paying careful attention to the direction of the batteries marked in the battery compartment and the +/- polarity on the batteries.

 Please note: The device has a circuit protection program inside. After inserting the battery, if the device does not respond, please charge it for ,at least ,two seconds to automatically release the protection program. When removing and reinstalling the battery, you need to repeat this step. Please follow this instruction !



Charging limit voltage: 5V  
Charging time: 3 hours  
Battery capacity: 2200 mAh  
Silent standby time: 6 months  
Normal use frequency: 2-3 months

Please pay more attention to the battery power and charge it in time to avoid being unable to start the machine in an emergency

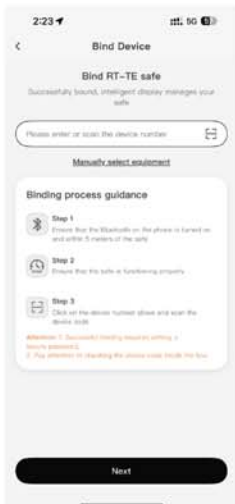


# App Usage



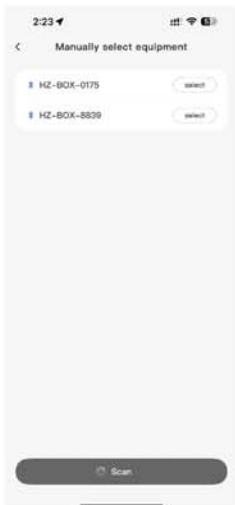
## Step 1

Download APP HZsafe and select your product type



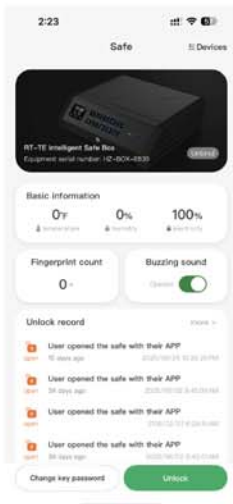
## Step 2

Click on Manually select equipment, manually select the device starting with **HZ-BOX-\*\*\*\*** to bind, the APP will automatically block other devices, click on bind, set the device connection password, and then log in to the device homepage (after binding, you can also enter the last four digits of the device code in the box above to log in to the device)



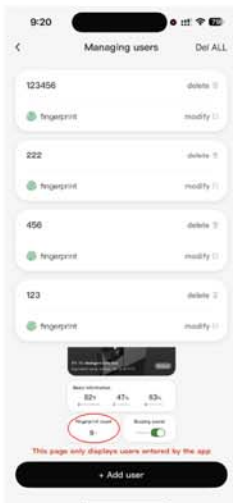
## Step 3

On the device binding interface, select the device and set a six-digit security password. (**Note: This is the password for the APP to access the device, and has nothing to do with the keyboard power-on password. Mobile phones with this password and the APP will have access to the device. If you need to modify it, you need to unbind all mobile phones. If you do not unbind all mobile phones, you will not be able to modify the link password. After unbinding all mobile phones, search for the device again to set the password. At this time, the APP link password will be reset.**) If you forget the password, you can contact [HZ-BOX@outlook.com](mailto:HZ-BOX@outlook.com) for assistance.



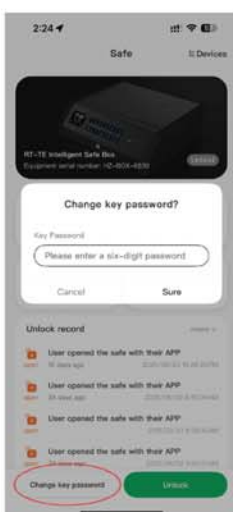
## Step 4

Enter the program page, you can  
 open the warehouse quickly without contact  
 view the internal temperature, humidity, and power data of the device,  
 view the number of fingerprint users of the device, edit, add or delete,  
 view the fingerprint user data not added by the APP (to prevent the third party from silently setting the fingerprint)  
 set the device mute state  
 view the latest 30 usage records  
 modify the device button power-on password  
 manage multiple device switches



## Step 5

Home page displays all user fingerprint data of the device(include app added+device self-added )  
 Fingerprint management interface, displaying user fingerprint data added through the app  
 Compare 2 data to confirm whether others has silently add fingerprints  
 Del ALL in the upper right corner can delete all device user fingerprint data with one click



## Step 6 Change Device Keypad Password

**This password is the device keyboard opening password  
 It's not an app access device connection password**



Please note: The device has a circuit protection program inside. After inserting the battery, if the device does not respond, please charge it for ,at least two seconds to automatically release the protection program. When removing and reinstalling the battery, you need to repeat this step. Please follow this instruction !

If you have any questions, feel free to contact us at  
[hz-box@outlook.com](mailto:hz-box@outlook.com) .We're happy to help!  
Official website: <http://www.zzyyq.cn>

NOTE: This equipment has been tested and found to comply with the limits for a Class B digital device, pursuant to part 15 of the FCC Rules. These limits are designed to provide reasonable protection against harmful interference in a residential installation. This equipment generates, uses and can radiate radio frequency energy and, if not installed and used in accordance with the instructions, may cause harmful interference to radio communications. However, there is no guarantee that interference will not occur in a particular installation. If this equipment does cause harmful interference to radio or television reception, which can be determined by turning the equipment off and on, the user is encouraged to try to correct the interference by one or more of the following measures:

- Reorient or relocate the receiving antenna.
- Increase the separation between the equipment and receiver.
- Connect the equipment into an outlet on a circuit different from that to which the receiver is connected.
- Consult the dealer or an experienced radio/TV technician for help

Changes or modifications not expressly approved by the party responsible for compliance could void the user's authority to operate the equipment.

This device complies with Part 15 of the FCC Rules. Operation is subject to the following two conditions: (1) this device may not cause harmful interference, and (2) this device must accept any interference received, including interference that may cause undesired operation.

FCC RF Exposure Warning Statement:

This equipment complies with FCC radiation exposure limits set forth for an uncontrolled environment. This equipment can be used in portable exposure conditions.