

FCCWarning Statement
Changes or modifications not expressly approved by the party responsible for compliance couldvoid the user's authority to operate the equipment, This equipment has been tested and foundto comply with the limits for a Class B digital device, pursuant to Part 15 of the Fcc Rules. Theselimits are designed to provide reasonable protection against harmful interference in a residentialinstallation. This equipment generates uses and can radiate radio frequency energy and, if notinstalled and used in accordance with the instructions, may cause harmful interference to radiocommunications. However, there is no euarantee that interference wil not occur in a particularinstallation. If this equipment does cause harmful interference to radio or television reception,which can be determined by turning the equipment off and on, the user is encouraged to try tocorrect the interference by one or more of the following measures:
--Reorient or relocate the receiving antenna.
--Increase the separation between the equipment and receiver.
--Connect the equipment into an outlet on a circuit different from that to which the receiver is connected.
--Consult the dealer or an experienced radio/TV technician for help.This device complies with part 15 of the FCC Rules. Operation is subject to the following twoconditions: (1) This device may not cause harmful interference, and (2) this device must acceptany interference received, including interference that may cause undesired operation.RF Exposure Statement
To maintain compliance with FCC's RF Exposure guidelines, This equipment should be installedand operated with minimum distance of 20cm the radiator your body.

Product Name:Wifi Camera
Model:QC5

Device connection

1 Download the APP

Scan the QR code below to download and insta the APP.

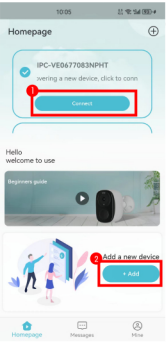


2 Register and log in to the APP

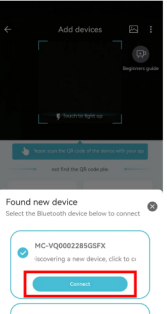
- (1) Please register an APP account and log in.
- (2) If you have already registered, please log in directly.

Connection method--One Click Connection

- 1、Find the device ID and click on 'Connect'
- 2、Click "+Add," the page jumps to figure 2.



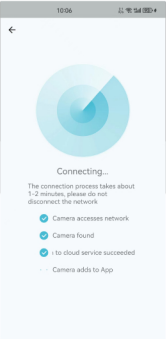
- 2-1、Find the device ID and click on 'Connect'



- 3、Select WiFi, enter the correct password, and click "Next."

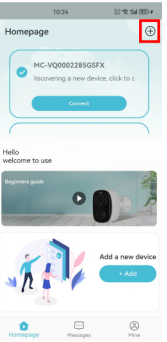


- 4、Waiting for connection.

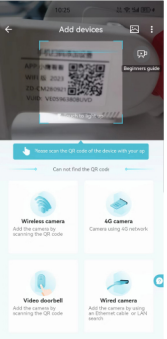


Connection method--Scan the QR code

- 1、Click "+" to add device.



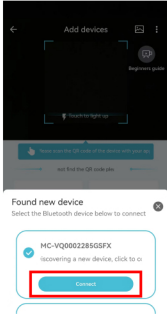
- 2、Scan the QR code on the camera label.



- 3、Upon hearing a sound or seeing the indicator light flashing, check and click "Next."



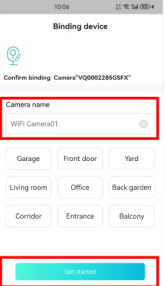
- 4、Select WiFi, enter the correct password, and click "Next."



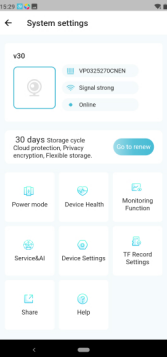
- 5、Align the QR code with the camera.



- 6、Click on the input box, customize the device name, and click "Get started."



Device sharing



Open permission of Device sharing, the person being shared can set the function of the device. If the permission is turned off, you can only watch the video, and cannot set the function.

System settings and clarity settings

