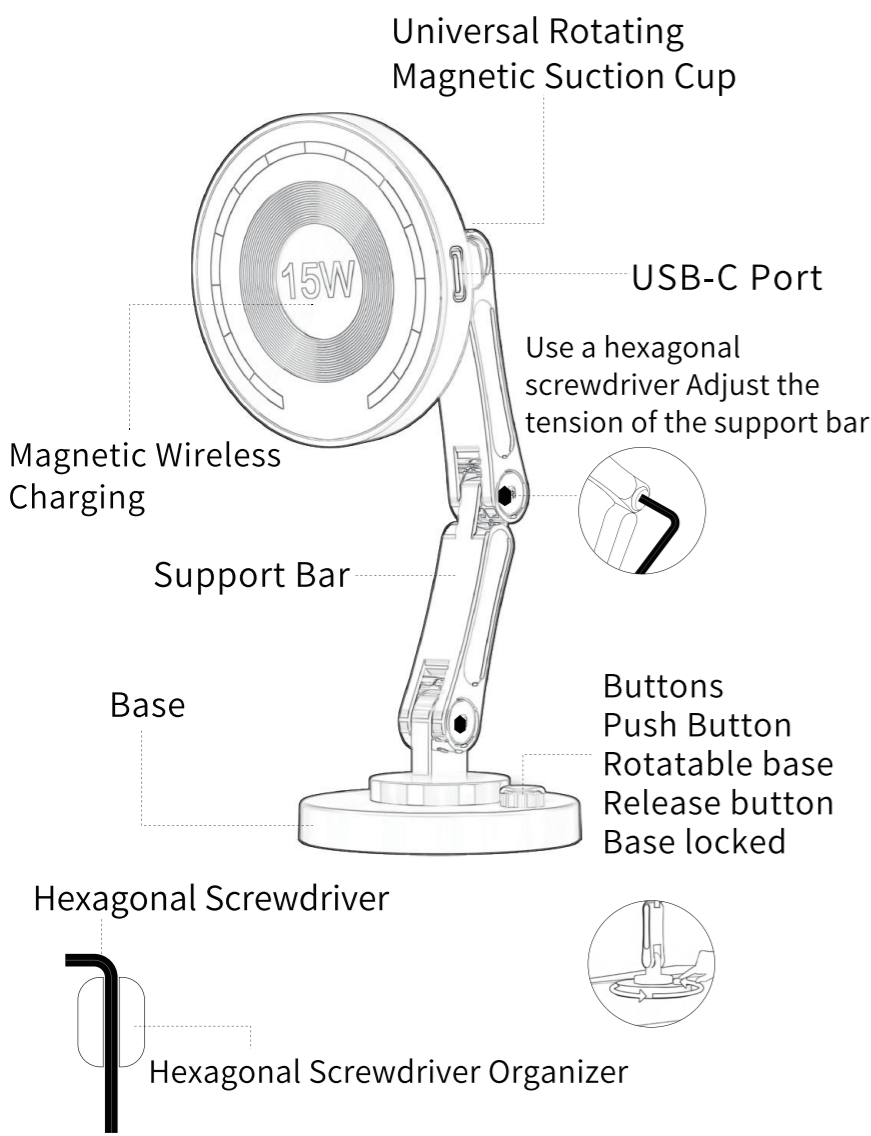
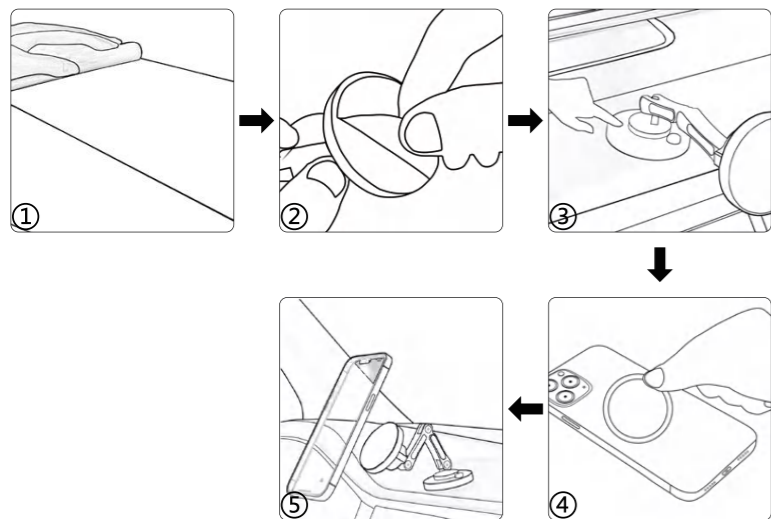


CAR MAGNETIC CELL PHONE HOLDER

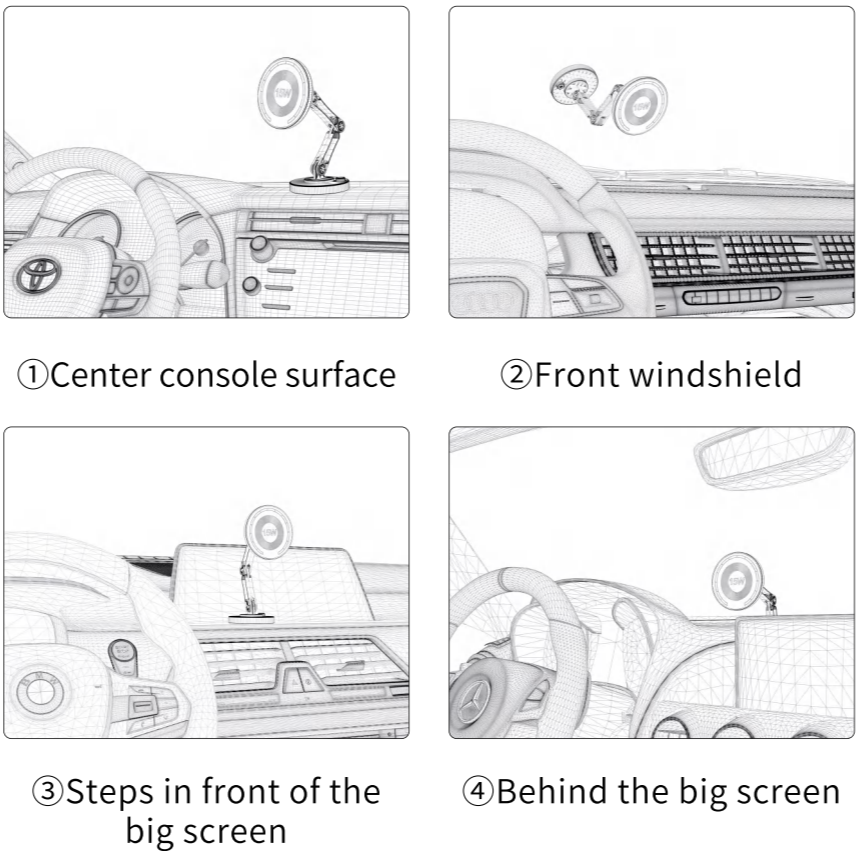


Installation steps:



- ① Clean the paste surface.
- ② Remove the adhesive film from the bottom of the product.
- ③ Paste to the flat position after pressing 60 seconds to release (Note: Paste need to be left for 24 hours after fully pasted firmly cause before use)
- ④ Stand the magnetizing metal ring on the outer surface of the cell phone case (note; individual Apple phones come with MagSafe magnetizing metal ring, can be directly adsorbed on the use without the need to paste our complimentary magnetizing metal ring)
- ⑤ Use the phone by attaching it to the holder panel.

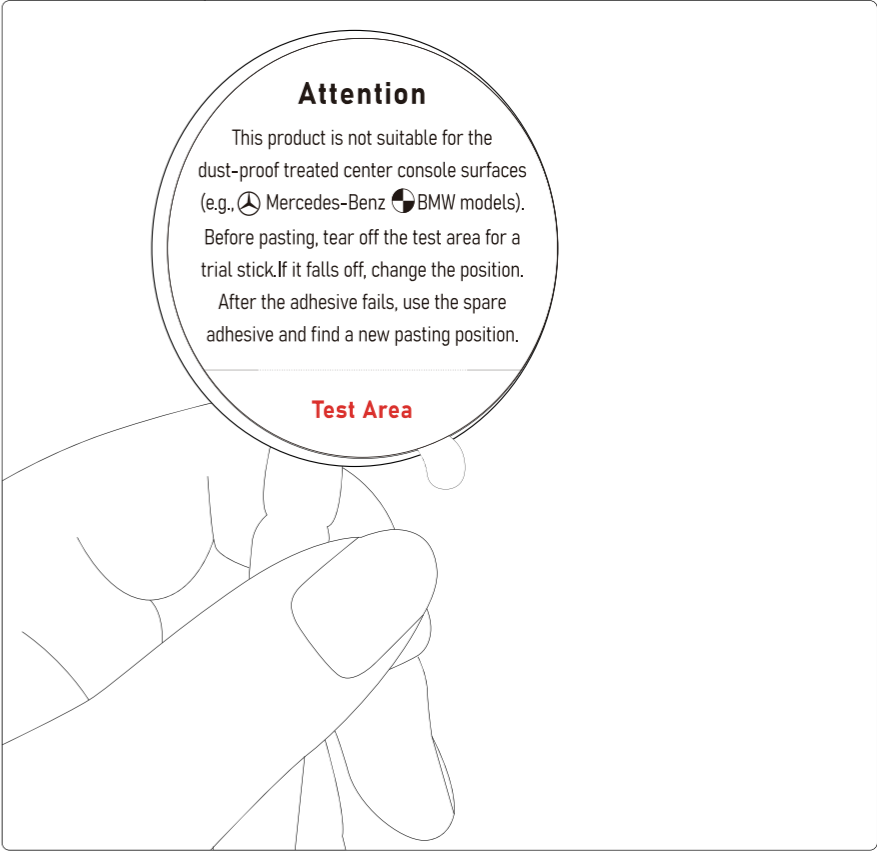
Recommended Position:



The above recommended paste position for mostmodels suitable paste position, different brands anddifferent models of the actual paste position will bedifferent, the specific paste position can be based ontheir own models to choose the leveling of theappropriate position to paste.

Special Attention:

This product can not paste the surface of the centerconsole has been dust treatment, if you are not surewhether it can be pasted, in the paste before you cantear a little bit of the test area to try to paste if you cannot paste, please immediately replace the pasteposition!If this piece of adhesive is destroyed.after replacing it with a second spare piece of adhesive,be sure to find another flat spot where it will st



#### FCC Caution:

This device complies with part 15 of the FCC Rules. Operation is subject to the following two conditions: (1) this device may not cause harmful interference, and (2) this device must accept any interference received, including interference that may cause undesired operation.

Any changes or modifications not expressly approved by the party responsible for compliance could void the user's authority to operate the equipment.

NOTE: This equipment has been tested and found to comply with the limits for a Class B digital device, pursuant to Part 15 of the FCC Rules. These limits are designed to provide reasonable protection against harmful interference in a residential installation. This equipment generates, uses and can radiate radio frequency energy and, if not installed and used in accordance with the instructions, may cause harmful interference to radio communications. However, there is no guarantee that interference will not occur in a particular installation. If this equipment does cause harmful interference to radio or television reception, which can be determined by turning the equipment off and on, the user is encouraged to try to correct the interference by one or more of the following measures:

- Reorient or relocate the receiving antenna.
- Increase the separation between the equipment and receiver.
- Connect the equipment into an outlet on a circuit different from that to which the receiver is connected.
- Consult the dealer or an experienced radio/TV technician for help.

To maintain compliance with FCC's RF Exposure guidelines, This equipment should be installed and operated with minimum distance between 20cm the radiator your body: Use only the supplied antenna.