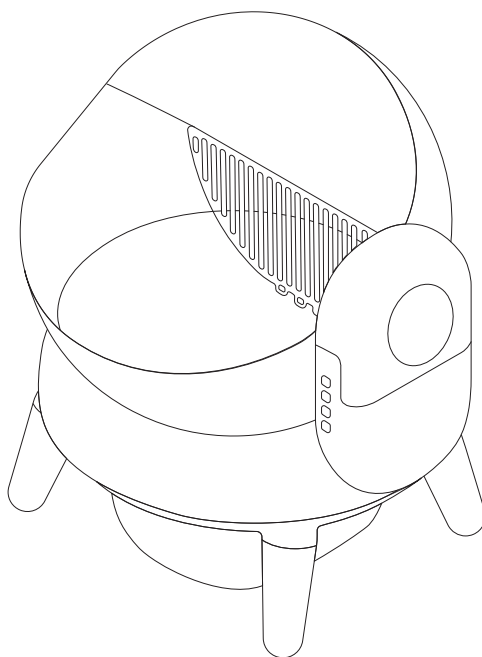


# OpenAir smart litter box Users Manual



Scan the QR code to  
view the video instructions



Please read this manual carefully before use and keep the warranty card properly

# Contents

- Safety Instructions ..... 01
- Product Components ..... 02
- Product Overview ..... 03
- Product Installation ..... 04
- Product Operation ..... 07
- Routine Maintenance ..... 09
- Product Specifications ..... 12
- Warranty Service ..... 13

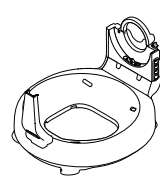
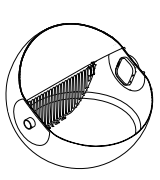
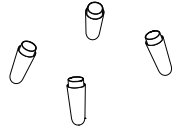
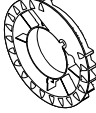
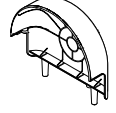

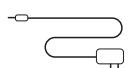



# Safety Instructions

Thank you for purchasing the OpenAir Smart Litter Box. Please carefully read the following instructions before use:

- Before installation or use, thoroughly review this manual. Installing or using the product implies you accept the terms and safety guidelines outlined herein. The company is not responsible for accidents or damages caused by misuse.
- Do not use this product for kittens under six months old or cats weighing less than 1.5 kg (3.3 lbs). Cats over 15 kg (33 lbs) may find the space too restrictive.
- Ensure no cat is inside or on top of the device before powering it on. During calibration or return-to-position cycles, prevent cats from entering the device.
- The product is compatible with small-grain absorbent litter, such as clay, bentonite, or crushed tofu litter. For strip-shaped litter, a special filter is required. Contact customer support for accessories.
- Although the device operates on low voltage, chewing the power cord or interface can cause leakage. Guide pets away from cables.
- Use only the original power adapter to avoid equipment damage or safety hazards.
- Disconnect the power cable before moving the product.
- Place the product on a stable, level surface to prevent tipping and operational failures.
- Use indoors, away from direct sunlight, fire sources, and high humidity to avoid damage to the circuit board or casing.
- Do not immerse the product in water or use it in wet environments.
- Empty the waste bin regularly to maintain freshness, with a maximum interval of one week.
- Supervise children when they interact with the device.
- The product requires a 2.4 GHz Wi-Fi network.
- Only authorized personnel may repair the product. Unauthorized repairs can cause damage.
- For unresolved issues, contact official customer service promptly.
- The company reserves the right to interpret and modify this manual.

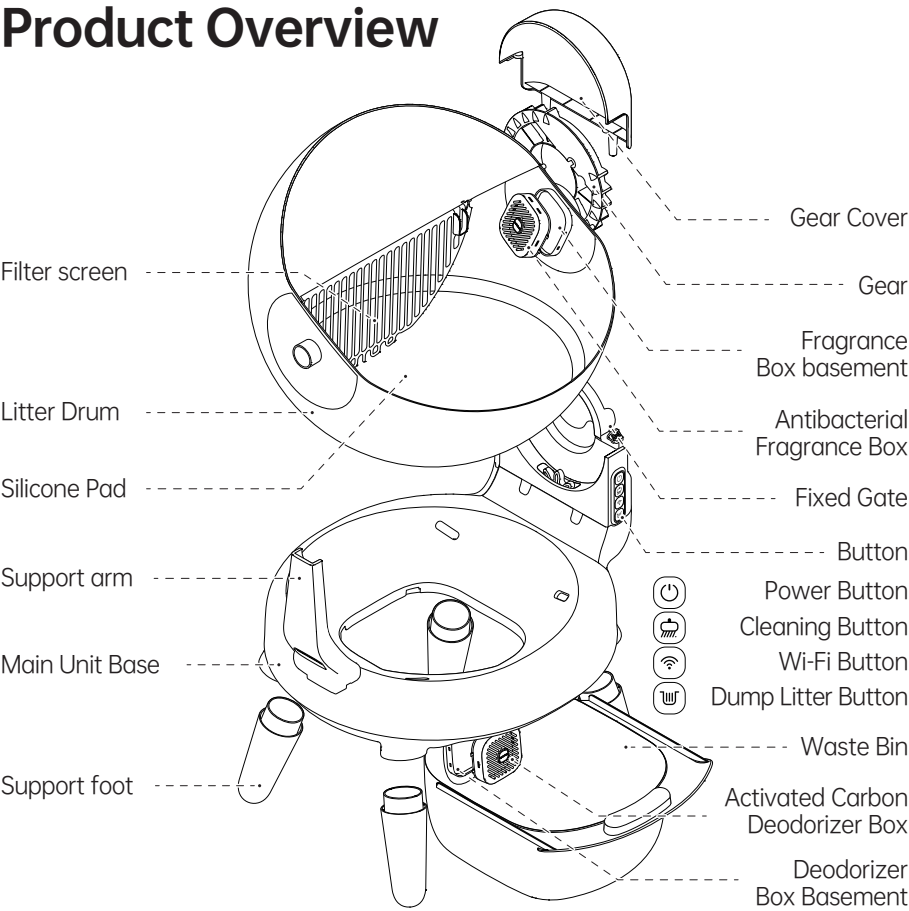
# Product Components

Before installation, ensure all components are intact and match the checklist below:

				
Main Unit Base x1	Litter Drum x1	support Foot x4	Gear x1	Gear Cover x1
				
Waste Bin x1	Power Adapter x1	Antibacterial Fragrance Box x1 Activated Carbon Deodorizer Box x1	Screwdriver x1 Screws x5	User Manual x1

Note: Product components may differ slightly from the illustrations due to ongoing improvements. Actual components prevail.

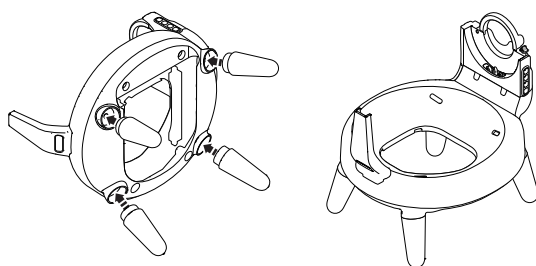
# Product Overview



# Product Installation

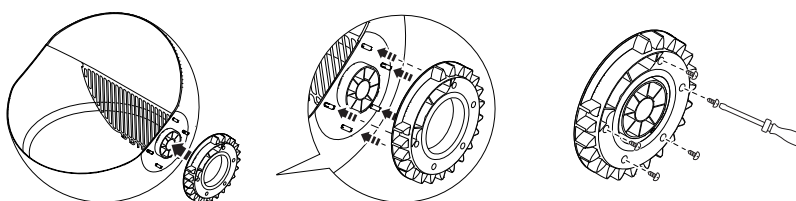
## Install Support Feet

Turn the main unit base upside down, Insert the four support feet into the circular slots until secure, Flip the main unit back to its upright position.



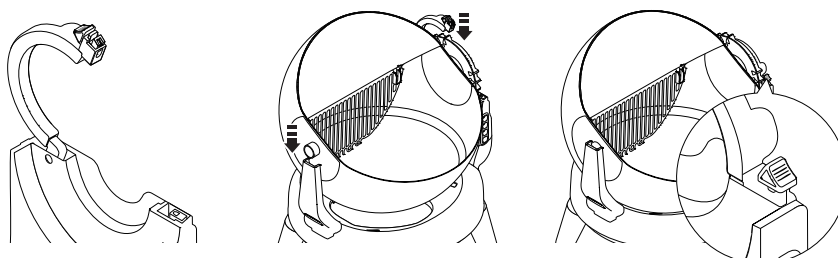
## Attach The Gear To The Litter Drum

According to the instructions stickers on the litter drum gear, place the litter drum gear close to the litter drum and insert the 5 protruding screw columns on the litter drum gear into the 5 screw grooves on the litter drum gear to achieve a complete fit between the litter drum and the litter drum gear. Then screw in and tighten the 5 screws.



## Place The Litter Drum

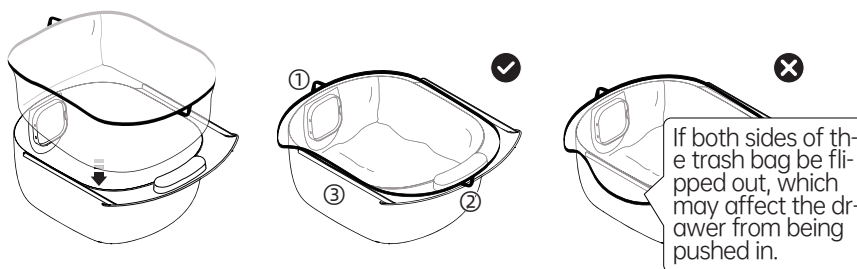
Unlock and open the latch on the right side of the base (Pinch the pin at the front end of the brake to unlock it), Position the drum into the base, ensuring both sides align with the corresponding grooves. Push the latch down to lock the drum securely.



Note: It is necessary to repeatedly confirm the locking condition of the fixed gate to avoid the litter drum from slipping out.

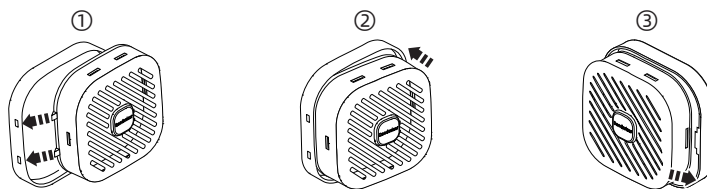
## Install The Waste Bag

Place a waste bag into the waste bin. Fold the bag edges over the back sides of the bin, and the front side over the front handle, and try to gather left and right edges inside the bin.



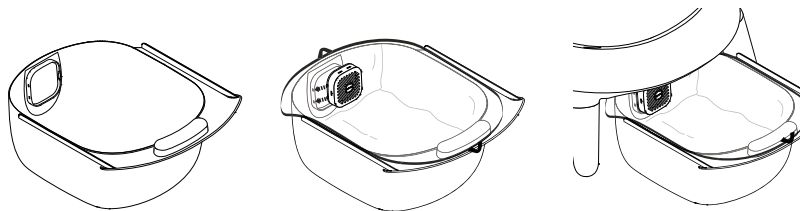
## Install Fragrance And Deodorizer Boxe

Open the sealed bag of the antibacterial fragrance box and prepare to install it onto the fragrance box base on the right side of the sand basin.①Insert the two protrusions of the fragrance box into the two fixing holes on the base ②Press down to embed the entire fragrance box into the base③Slide the fragrance box in the opposite direction of the fixed hole just inserted, so that the hole on the other end of the fragrance box fits into the corresponding protrusion of the fragrance box base, and then complete the fixation.



To remove, follow the above steps in reverse order (①②③→③②①)

Install the bamboo charcoal deodorizing box into the deodorizing box base inside the waste collection bin. Follow the same steps as above. Note:When using a waste bag, install the deodorizing box after setting the bag to maximize its effectiveness.

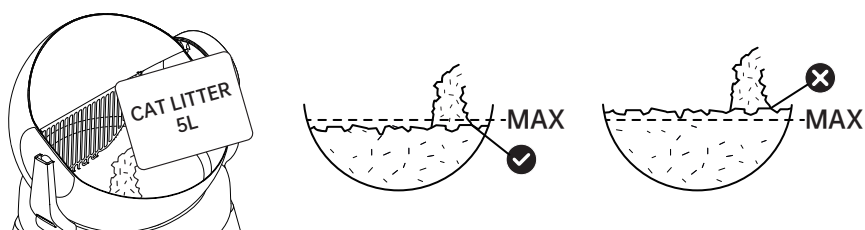




## Product Usage

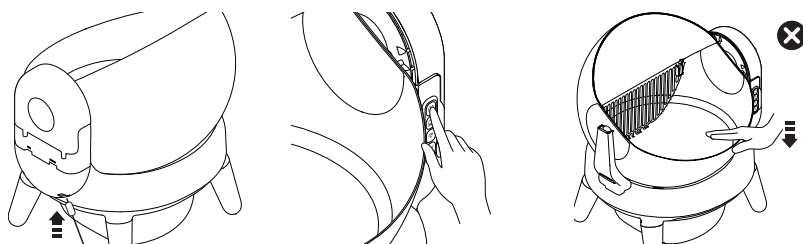
### Adding Cat Litter

Place the litter box on a flat surface before adding cat litter. Do not exceed the MAX line at the bottom of the litter drum (up to 5L of cat litter). Only use small-grain litter (particle diameter < 3mm, length < 7mm), such as clumping clay, bentonite, or crushed tofu litter.



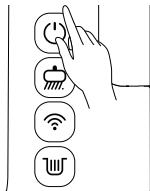
### Starting The Litter Box

Connect the power adapter to the main unit base (ensure the power connector is dry before plugging in). Press and hold the Power Button for 2 seconds to turn on the unit. The litter box will rotate and perform a self-check. During this process, keep pets away from the unit. Once the self-check is complete, and the litter is leveled, the device is ready for use.



APP Smart Control

Scan the QR code below to download and install the MEET Petapp.Press and hold the Wi-Fi Buttonon the main unit base for 2 seconds to enable pairing mode. Follow the app instructions to connect the litter box to your Wi-Fi network.Once successfully connect- ed, you can control the litter box remotely and access usage data through the app.



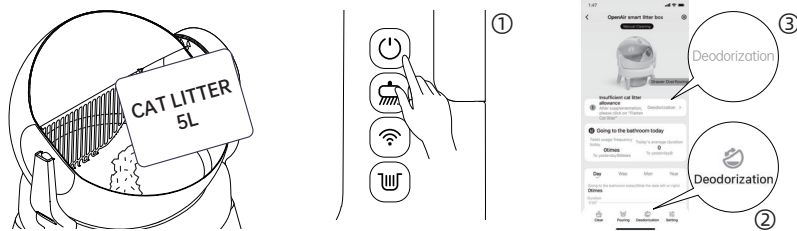
Button Operations And Indicator Lights

	Press and hold for 2 seconds	turn on/ turn off	indicator off-device is off	<div>All buttons flashing: Rapid flashing: Waste bin full (clear the bin and press any button to reset). Slow flashing: Excess litter (reduce to below the MAX line and press any button to reset).</div>
	Double press	Smooth cat litter	indicator on-device is on	
	Single press	start/pause	flash—the cover is improperly	
	Double press	manual/automatic mode	indicator off-manual mode	
	Press and hold for 2 seconds	configuration network	indicator on-automatic mode	
			Flash-Cleaning in progress	
			indicator off-WIFI not connected	
	Press and hold for 2 seconds	empty litter	indicator on-WIFI connected	
			Flash-connecting	
			off-didn't work now	
	Single press	Pause/resume sand removal	on-Emptying the litter	

# Daily Maintenance

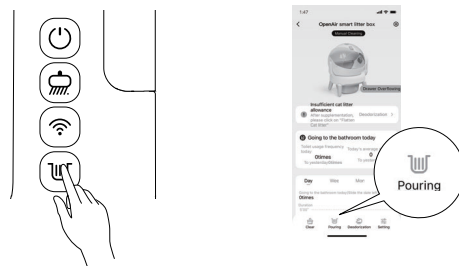
## Refilling Cat Litter

After adding litter, recalibrate the weight using one of the following methods: ① Double click the "power button" on the machine base; ② click "Level Litter" in the app ③ Respond to the low litter notification in the app and follow the steps.



## How To Replacing All Cat Litter

Cats prefer a clean litter environment; suggest to replace all litter monthly. Before emptying litter, ensure the waste bin has enough space to hold the remaining litter in the drum. Replace the waste bag if necessary. Press the Empty Button or use the "Empty Litter" function in the app to discard the old litter. Add new litter as described above.



## How To Cleaning The Litter Box

①Disconnect the power adapter before cleaning.And remove the gear protection cover.

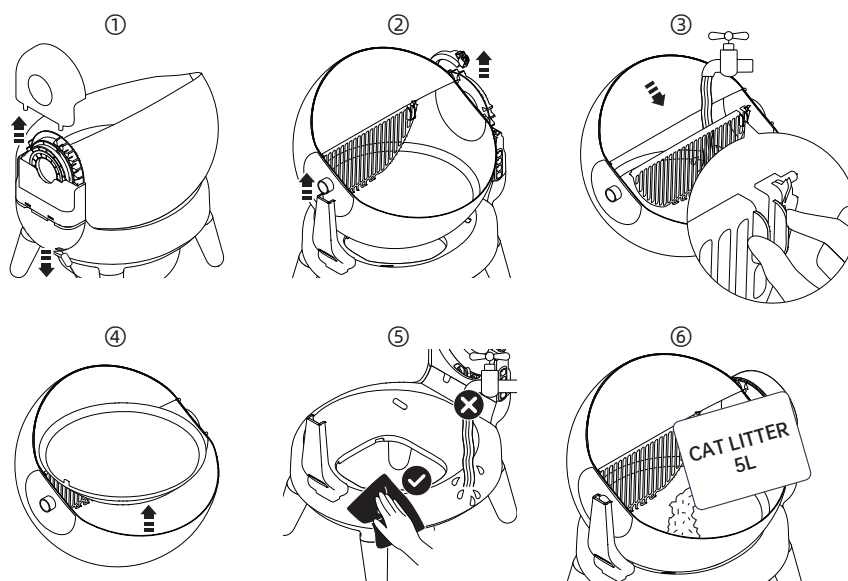
②Pinch and press the front pin of the fixed gate to unlock and open the fixed gate, then lift it up to remove the litter drum.

③The whole drum is washable, you can also take out the filter screen for better wash.

④The silicone pad does not need to be removed for cleaning. If replacement is required, it can be installed according to the accessory manual after purchasing the accessories.

⑤Use a wet cloth or disinfectant wipes to clean the main unit base (do not immerse in water).

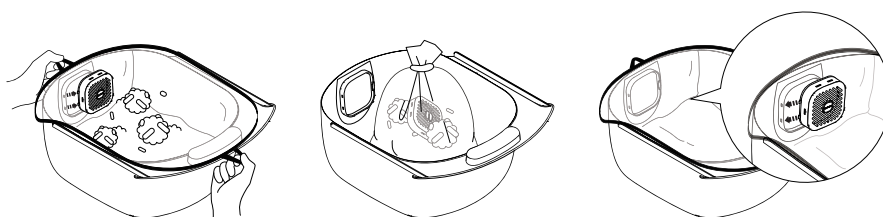
⑥Allow all parts to dry completely before reassembling and adding new litter.



## How To Clean Up The Trash Bin

When notified of a full waste bin, it is necessary to go and check the trash bin. The operation method can be assisted by clicking on the app. Pull out the bin and remove the deodorizer box (which can be discarded or reinstalled according to the expiration date reminder on the APP). Tie and dispose of the waste bag.

Replace the waste bag and reinstall the deodorizing box. Push the bin back into the unit. The notification will clear automatically after 2 minutes or by pressing any button.



## Product Specifications

Product Name	OpenAir Smart Litter Box	Rated Power	24W
Model	MB315	Rated Voltage	12V 2A
Product size	508x454x560 mm	Suitable for Cats	Cats over 6 months and >1.5 kg
Product weight	≈7.8kg	Max Litter Capacity	5kg/5L
Materials	ABS、PP	Waste Bin Volume	6.9L

## Warranty Service

### Warranty Period:

The product comes with a 12-month warranty from the date of original purchase.

### Service Terms:

1. Within 7 days of purchase, if the product has quality issues, the company will issue a full refund or replace the product.
2. Within the warranty period, if the product malfunctions (e.g., not working, circuit issues, button failure), it can be repaired for free or replaced if irreparable.
3. Repairs due to the following conditions will be charged, even within the warranty period:
  - ① Didn't follow the users manual, damaged by improper use, maintenance, or storage.
  - ② Damage caused during transportation.
  - ③ Damage caused by pets.
  - ④ Damage due to natural disasters (e.g., earthquakes, fires).
4. The following conditions are not covered by warranty, even within the warranty period:
  - ① Products not purchased through authorized channels. (such as personal sales, reselling, etc. that cannot provide initial purchase records or invoices;).
  - ② Products that have been disassembled by the customer.
  - ③ Damage to consumable parts.
5. Normal fading, wear and tear, and consumption during product use are not covered by the warranty.
6. Out-of-warranty repairs will incur shipping and repair costs.
7. Products shall be based on the original product warranty period (i.e. the date of original purchase receipt).
8. The company reserves the right to interpret and update the terms.



**Request warranty service**

Scan to add corporate After Sales Assistant on WeChat

#### FCC Statement

Any Changes or modifications not expressly approved by the party responsible for compliance could void the user's authority to operate the equipment.

This device complies with part 15 of the FCC Rules. Operation is subject to the following two conditions:

- (1) This device may not cause harmful interference, and
- (2) This device must accept any interference received, including interference that may cause undesired operation.

#### FCC Radiation Exposure Statement:

This equipment complies with FCC radiation exposure limits set forth for an uncontrolled environment. This equipment should be installed and operated with minimum distance 20cm between the radiator & your body.

Note : This equipment has been tested and found to comply with the limits for a Class B digital device, pursuant to part 15 of the FCC Rules. These limits are designed to provide reasonable protection against harmful interference in a residential installation. This equipment generates, uses and can radiate radio frequency energy and, if not installed and used in accordance with the instructions, may cause harmful interference to radio communications. However, there is no guarantee that interference will not occur in a particular installation. If this equipment does cause harmful interference to radio or television reception, which can be determined by turning the equipment off and on, the user is encouraged to try to correct the interference by one or more of the following measures:

- Reorient or relocate the receiving antenna.
- Increase the separation between the equipment and receiver.
- Connect the equipment into an outlet on a circuit different from that to which the receiver is connected.
- Consult the dealer or an experienced radio/TV technician for help.

# meet

TAIZHOU HUANGYAN MEIBAO PET SUP-  
PLIES CO.LTD Taizhou Huangyan MEIB-  
AO Pet Supplies Co., Ltd  
29-1 ChangNing road, BeiYang town, Huang  
Yan district, ZheJiang province