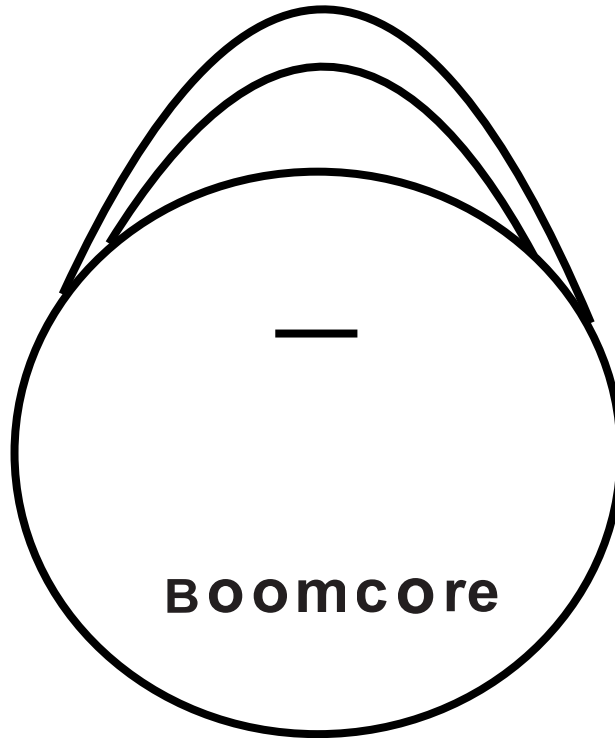


Quick Start Guide



- Remove the protective film from the tag to activate and start using it.
- Press the center of the tag to power on/off or reset.
- The device will automatically turn off if it is not paired within 3 minutes.

Boomcore

**Hey, congrats on
your new Boomcore Tag.**

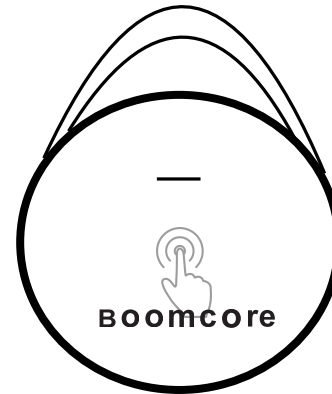
Get ready to track smarter, move better, and feel the difference.

Pair with Find My App

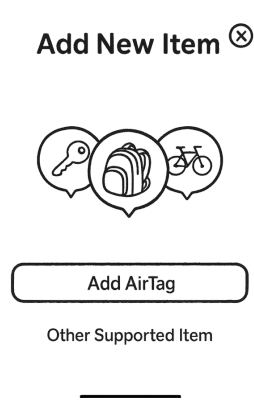
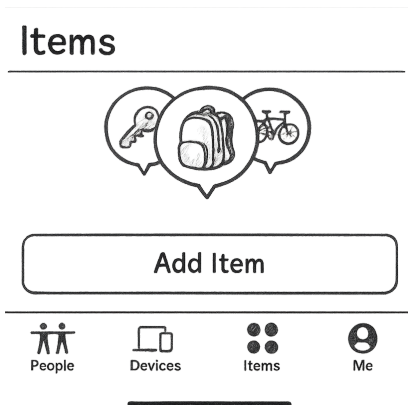
1. Enable Bluetooth on your iOS device. Make sure your device is updated to the latest iOS version.



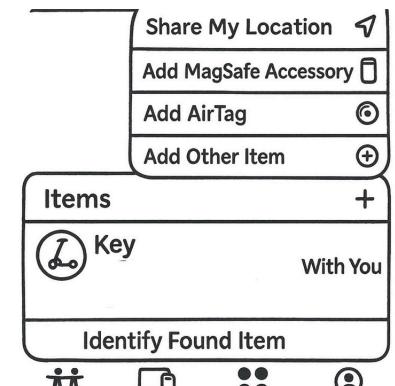
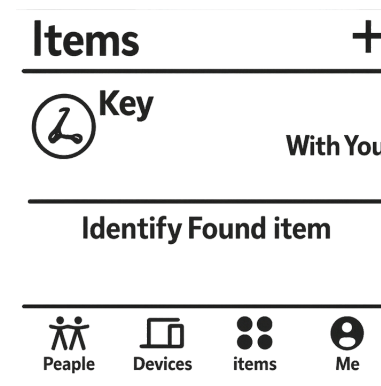
2. Quickly press the Boomcore Tag's power button to turn it on, then place it close to your iOS device.



3. Open the Find My app, tap **Items**, then tap **Add Item**. Choose **Other Supported Item** and follow the on-screen instructions to complete pairing.



4. To pair additional items later, tap the **+** icon and select **Add Other Item**.



Note: For the best experience, update the firmware via the **Find My** app when an update is available.

Battery Replacement

Boomcore Tag contains a replaceable battery with an estimated lifespan of up to 1 year. When the battery is depleted, follow these steps to replace it:

- Use a small tool or your fingernail to gently pry open the battery cover via the side gap.
- Remove the old battery and insert a new one, ensuring the positive (+) terminal faces upward.
- Align the cover with the opening and press firmly to close.

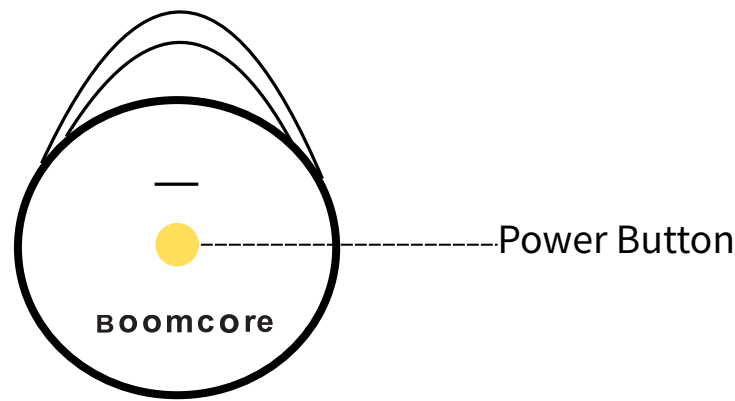
Warning

- Keep the battery away from kids and pets. This tag contains a coin cell battery, which is dangerous if chewed or swallowed.
- Replace with the same type of battery (CR2032) to avoid damage. There is a risk of fire or electric shock, if the battery is replaced by an incorrect type.
- If discarding the tag, remove the battery first.
- Dispose of used battery according to your local environmental laws and guidelines.

Specifications

Dimensions	1.53*1.27*0.36 inches (38.75*32.36*9.06 mm)
Weight	0.28 ounce (8 grams)
Range	Over 230 ft (70 m)
Battery	CR2032, DC 3V
Frequency	2402~2480 MHz
Working Temperature	0°~104°F (0°~40°C)
Transmit Power	1.52 dBm
Connectivity	Bluetooth
Compatibility	iOS Devices
Firmware Update	Find My app
Voice Control	Siri

Controls and Status



Power Button	Status	Buzzer
Single Quick Press	Power On	Long Ring
Press and Hold for 3 seconds	Power Off	Two Short Beeps
Quickly press 5 times (Hold the 5th press until the ring)	Reset	Long Ring

*This will restore the tag to factory settings and clear all the connection data. You must remove the item from the **Find My** app and add it back before using it again.

FCC Compliance Statement

This device complies with Part 15 of the FCC rules. Operation is subject to the following two conditions: (1) this device may not cause harmful interference, and (2) this device must accept any interference received, including interference that may cause undesired operation.

Note: This equipment has been tested and found to comply with the limits for a Class B digital device, pursuant to Part 15 of the FCC Rules. These limits are designed to provide reasonable protection against harmful interference in a residential installation.

This equipment generates uses and can radiate radio frequency energy and, if not installed and used in accordance with the instructions, may cause harmful interference to radio communications. However, there is no guarantee that interference will not occur in particular installation.

If this equipment does cause harmful interference to radio or television reception, which can be determined by turning the equipment off and on, the user is encouraged to try to correct the interference by one or more of the following measures:

- Reorient or relocate the receiving antenna.
- Increase the separation between the equipment and receiver.
- Connect the equipment into an outlet on a circuit different from that to which the receiver is connected.
- Consult the dealer or an experienced radio/TV technician for help.

Changes or modifications not expressly approved by the party responsible for compliance could void the user's authority to operate the equipment.

This device and its antenna(s) must not be co-located or operation in conjunction with any other antenna or transmitter.

Radiation Exposure Statement

The device has been evaluated to meet general RF exposure requirement in portable exposure condition without restriction.

Legal Notice

Use of the Works with Apple badge means that a product has been designed to work specifically with the technology identified in the badge and has been certified by the product manufacturer to meet Apple Find My network product specifications and requirements.



WARNING

- **INGESTION HAZARD:** This product contains a button cell or coin battery.
- **DEATH** or serious injury can occur if ingested.
- A swallowed button cell or coin battery can cause **Internal Chemical Burns** in as little as **2 hours**.
- **KEEP** new and used batteries **OUT OF REACH OF CHILDREN**.
- **Seek immediate medical attention** if a battery is suspected to be swallowed or inserted inside any part of the body.



KEEP BATTERIES OUT OF REACH OF CHILDREN

- **Battery Disposal:** Remove and recycle or dispose of used batteries right away, following local rules. Even used batteries can cause serious harm or death. Keep them away from kids.
- **Swallowed Batteries:** If you think batteries have been swallowed or inserted into any body part, get medical help immediately. Ingesting them can cause severe chemical burns in just two hours, leading to serious injury or death.
- **Battery Specifications:** The tag uses a CR2032 button or coin battery (3V). Replace it only with the same type and ensure the positive (+) side faces up. Using the wrong type may cause fire or electric shock.
- **Battery Safety:** Don't recharge non-rechargeable batteries. Avoid forcibly discharging, recharging, disassembling, heating above 104°F, or burning the battery. This can cause leakage, venting, or explosion, resulting in chemical burns and injury.
- **Battery Compartment:** If the battery compartment doesn't close securely, stop using the device, remove the batteries, and keep them away from children.
- **Electromagnetic Interference:** The tag has components that emit electromagnetic fields, which may interfere with pacemakers, defibrillators, or other medical devices. Keep a safe distance between the tag and your medical device. Stop using the tag if you suspect interference.