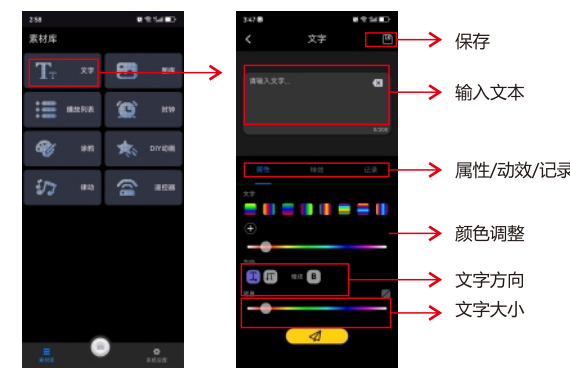
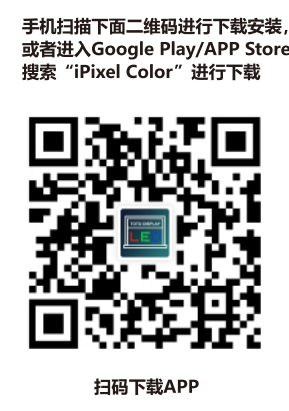
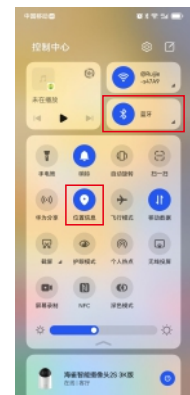


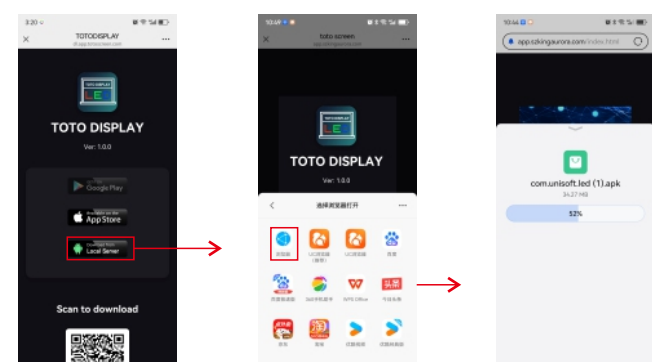
4.文字编辑



1.请打开蓝牙和定位



2.如果你没有APP Store/Google Play, 请点击第三个从本地服务器下载



3.连接蓝牙设备



注:
1:第一次打开APP, 请点击"连接LED设备", 选中蓝牙设备
2:若Android手机无法搜索到蓝牙, 请检查是否打开定位!

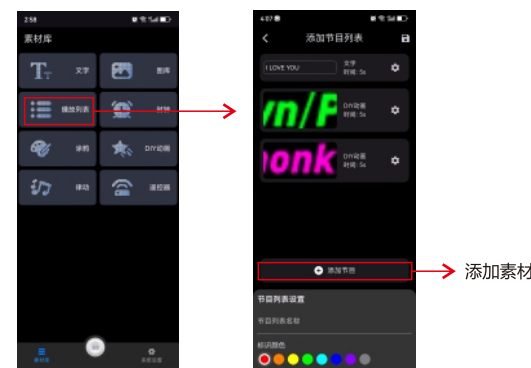
5.动效/记录



6.图库



7.播放列表



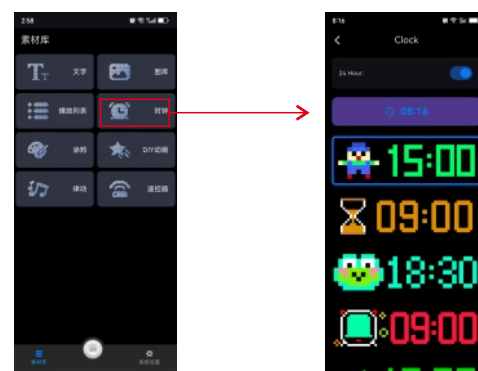
8.DIY图片



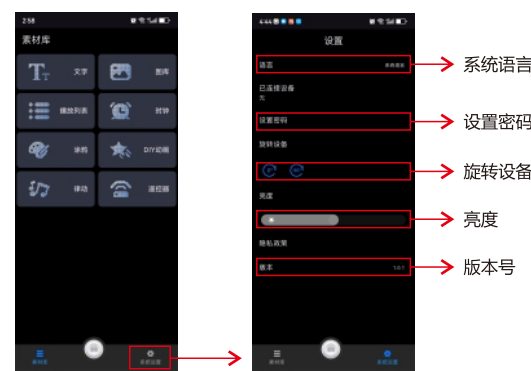
9.DIY动画



10.时钟



11.设置



12.APP控制面板



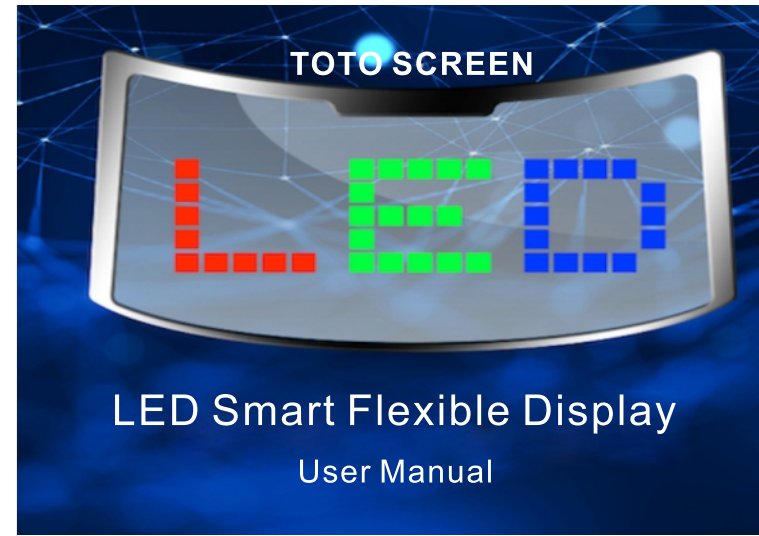
关于USB接口选择说明

| | | |
|------|-------------|---|
| 推荐使用 | 安卓手机原装充电器 | 功能正常 |
| 可用 | 移动电源 | 功能正常 |
| 可用 | 车载充电器5V/2A | 功能正常 |
| 可用 | 车载充电器5V/2A | 功能正常 |
| 可用 | 苹果手机充电器 | 某些内容会模糊、蓝牙连接错误、颜色偏差 |
| 请勿使用 | 电脑、电视机USB接口 | 1. 某些内容会模糊、蓝牙连接错误、颜色偏差 2. 可能会损坏USB接口、或电压不符 3. 请勿使用底部5V/2A的USB接口 |
| 请勿使用 | 汽车USB接口 | 1. 某些内容会模糊、蓝牙连接错误、颜色偏差 2. 可能会损坏USB接口、或电压不符 3. 请勿使用底部5V/2A的USB接口 |
| 请勿使用 | 非标准手机充电器 | 1. 损坏芯片、永久性损坏屏幕 2. 发热、起火等危险 |
| 请勿使用 | 改装USB接口 | 1. 损坏芯片、永久性损坏屏幕 2. 发热、起火等危险 |

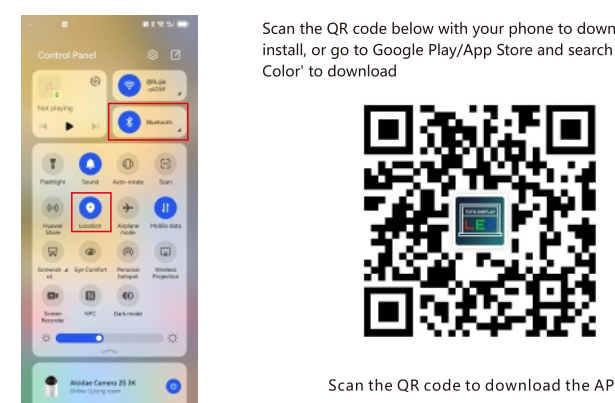
温馨提示:
1. 在使用过程中出现任何异常情况, 均可能与USB接口选择不当有关。 2. 若仍然无法解决问题, 请联系客服人员。

正面

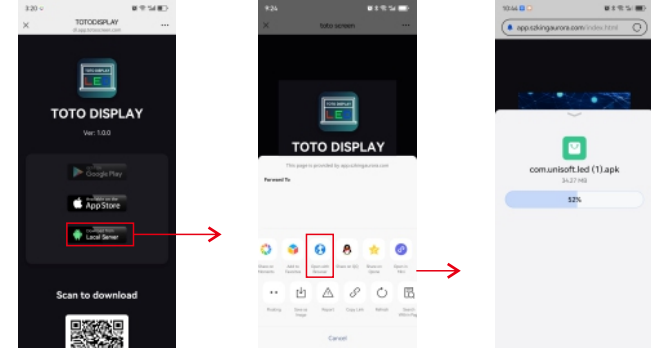
400X280mm



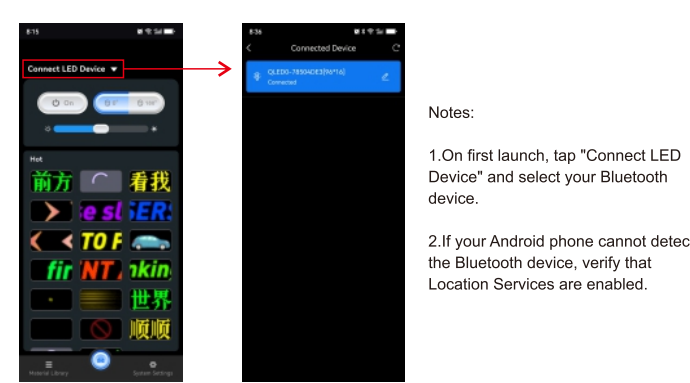
1.Please switch on Bluetooth and location



2.If you don't have access to the APP Store/ Google Play, please click the third option to download from the local server

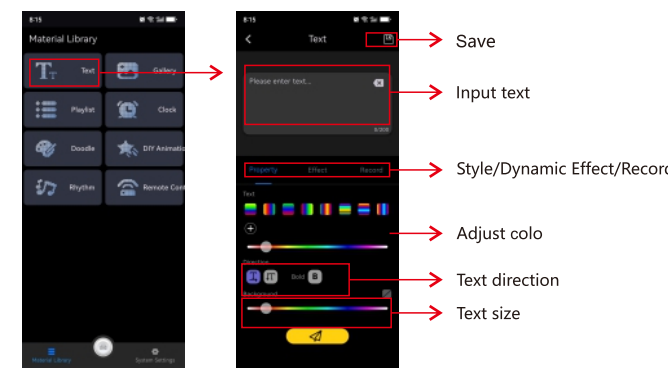


3.Connect to Bluetooth device

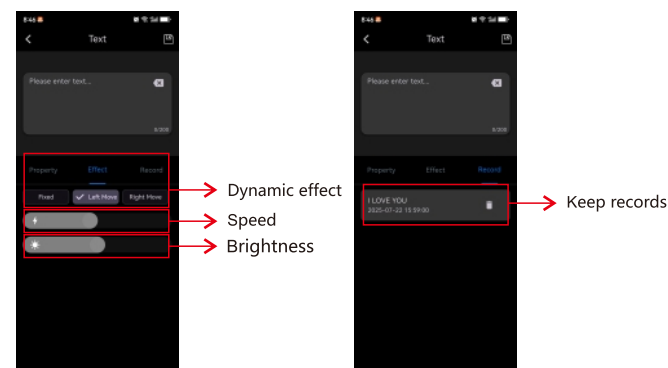


Notes:
1. On first launch, tap "Connect LED Device" and select your Bluetooth device.
2. If your Android phone cannot detect the Bluetooth device, verify that Location Services are enabled.

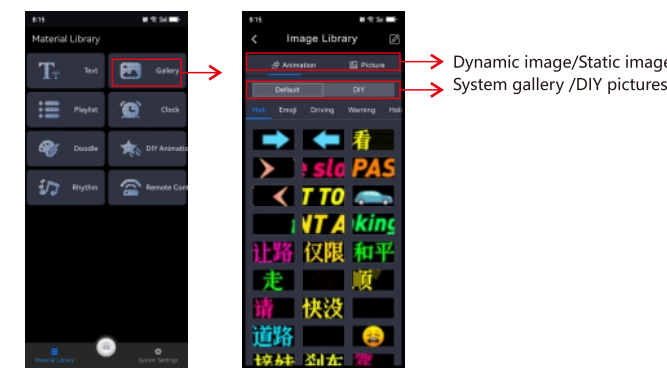
4.Text editing



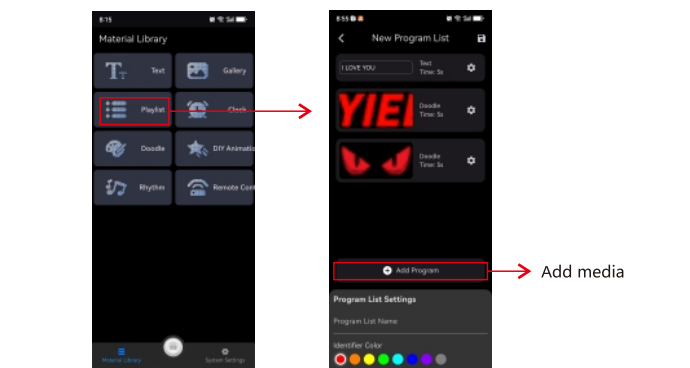
5.Dynamic effect/Record



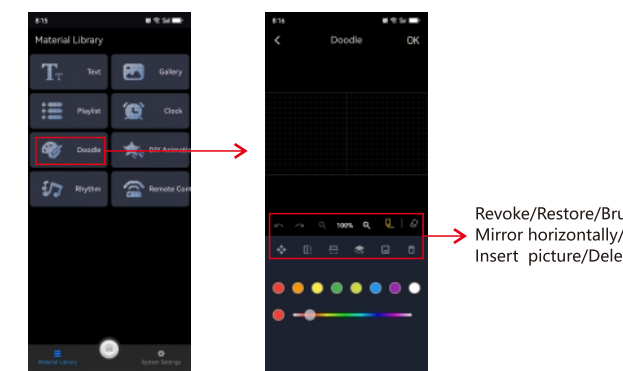
6.Gallery



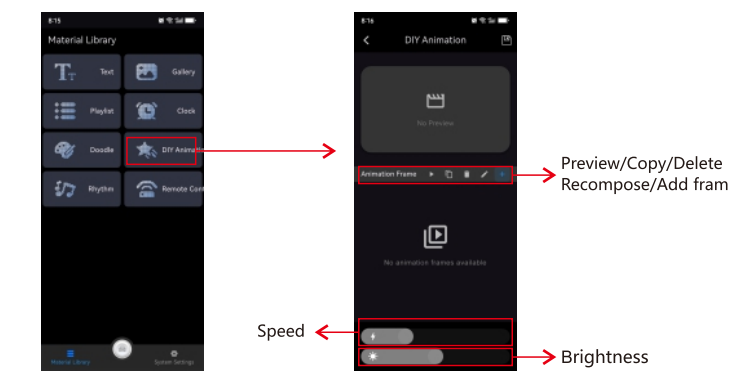
7.Playlist



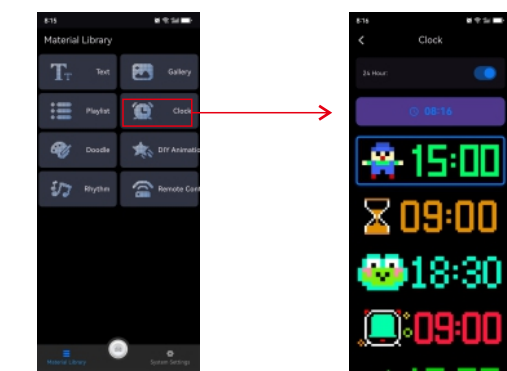
8.DIY pictures



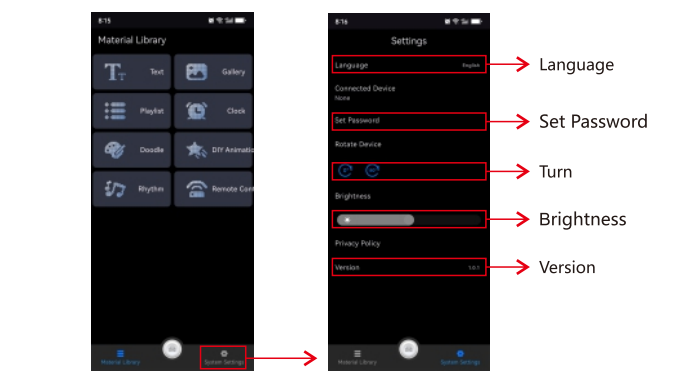
9.DIY animation



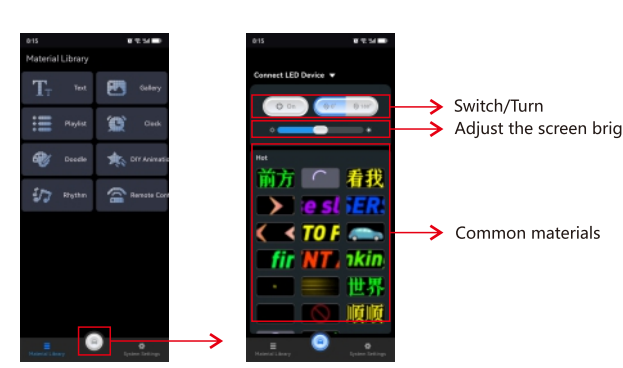
10.Clock



11.Settings



12.APP control panel



USB Interface Selection

| | | |
|-------------|--------------------------------|---|
| Recommended | Original Android phone charger | OK |
| Recommended | Power bank | OK |
| Recommended | Vehicular USB interface 5V/2A | OK |
| Normal use | Vehicle charger 5V/2A | Some content display may cause screen shutdown, Bluetooth connection errors, or a yellowish color |
| Normal use | Power strip USB | Some content display may cause screen shutdown, Bluetooth connection errors, or a yellowish color |
| Normal use | iPhone charger | Some content display may cause screen shutdown, Bluetooth connection errors, or a yellowish color |
| Do not use | Computer/TV USB | 1. Some content will turn off the screen, the Bluetooth connection is wrong, and the color is yellow. 2. It will cause damage to the USB interface, or the voltage does not match. |
| Do not use | Car U-disk interface | 1. Burn out the chip and permanently damage the screen. 2. Heat, fire and other risks. |
| Do not use | Non-standard phone charger | 1. Burn out the chip and permanently damage the screen. 2. Heat, fire and other risks. |
| Do not use | Modified USB interface | 1. Burn out the chip and permanently damage the screen. 2. Heat, fire and other risks. |

Reminder:
1. Any abnormal phenomena that occur during use may be related to incorrect selection of the USB interface.
2. If the problem still cannot be resolved, please contact customer service.

Warning: This device complies with Part 15 of the FCC Rules. Operation is subject to the following two conditions: (1) this device may not cause harmful interference, and (2) this device must accept any interference received, including interference that may cause undesired operation. Changes or modifications not expressly approved by the party responsible for compliance could void the user's authority to operate the equipment. NOTE: This equipment has been tested and found to comply with the limits for a Class B digital device, pursuant to Part 15 of the FCC Rules. These limits are designed to provide reasonable protection against harmful interference in a residential installation. This equipment generates, uses and can radiate radio frequency energy and, if not installed and used in accordance with the instructions, may cause harmful interference to radio communications. However, there is no guarantee that interference will not occur in a particular installation. If this equipment does cause harmful interference to radio or television reception which can be determined by turning the equipment off and on, the user is encouraged to try to correct the interference by one or more of the following measures: Reorient or relocate the receiving antenna. Increase the separation between the equipment and receiver. Connect the equipment into an outlet on a circuit different from that to which the receiver is connected. Consult the dealer or an experienced radio/TV technician for help. NOTE: This device and its antenna(s) must not be co-located or operation in conjunction with any other antenna or transmitter. Exposure Statement: To maintain compliance with FCC's RF Exposure guidelines, this equipment should be installed and operated with minimum distance of 20cm the radiator your body. This device and its antenna(s) must not be co-located or operation in conjunction with any other antenna or transmitter.

FC CE RoHS

背面