

**2.Environmental Protection Tips**  
This product contains electronic components and batteries. To ensure environmental safety, please do not dispose of it carelessly. After the device has reached the end of its service life, please hand over the product and its accessories to a legitimate recycling and disposal institution that meets national environmental protection requirements for recycling.

Part Name	Hazardous Substances or Elements				
	Lead (Pb)	Mercury (Hg)	Cadmium (Cd)	Hexavalent (Cr(VI))	Polybrominated biphenyls (PBB)
Printed Circuit Board(PCB)	○	○	○	○	○
Housing Components	○	○	○	○	○
Battery Components	○	○	○	○	○
Accessories	○	○	○	○	○

○ Indicates that the content of this hazardous substance in all homogeneous materials of this component is below the limit specified in the GB/T26572 standard.  
× indicates that the concentration of this hazardous substance in at least one homogeneous material of this component exceeds the limits specified in the GB/T26572 standard, and there are currently no mature alternative solutions available. Complies with EU RoHS Directive environmental requirements

## 5.Precautions

To ensure safe use of this product, please read and follow the following precautions carefully:

**1.Usage Safety**  
This product contains a built-in battery. Do not modify or disassemble the battery. Do not expose the battery or product to open flames, high temperatures, or direct sunlight. Avoid exposure to extreme heat, punctures, impacts, or disassembly.

Charging time must not exceed 6 hours. Ensure adult supervision during

charging. Disconnect the power source before leaving the premises or for extended periods of time.

If you notice any abnormalities with the battery, charging cable, or device (such as deformation, overheating, unusual odors, or damage), stop using it immediately and contact customer service to avoid the risk of electrical leakage, short circuits, or fire.

Do not use the device in humid environments. Store the product in a cool, dry place when not in use.

**2.Child Safety Guidelines**  
This product is designed for children's use. Adult supervision and guidance must be provided throughout use to ensure safe operation.

Children must not use the device unsupervised, especially during charging, cleaning, or network operations.

**3.Device Inspection and Maintenance**  
Before use, inspect the product's appearance for damage, verify proper installation, and ensure normal operation. Do not use if any abnormalities are detected.

Do not perform cleaning or maintenance operations while the device is powered on or charging.

Do not use alcohol, detergents, salt water, hot water, steel wool, compressed air, or similar substances for cleaning. Instead, use a dry, soft cloth to gently wipe the device's surface.

Do not continue using the product or accessories if they are damaged, loose, or broken, as this may compromise safety or cause device damage.

## 6.Product Informa

- Product Name: Sound & Light Toy / AI Smart Toys
- Product Model: AIP-Y25-0001-013219
- Product Material: Fabric: polyester fiber; Filling: 100% polyester fiber (includes motor housing)
- Product Dimensions: 50\*28\*15cm
- Charging Input: 3.7V
- Battery Charging Limit Voltage: 4.25V

- Maximum Power: 4.4Wh
- Battery Type: Lithium-ion Polymer Battery
- Battery Rated Capacity: 1200mAh
- Country of Origin: Mainland China
- Compliance Standards: GB 31241-2022; GB 6675.1-2014; GB 6675.2-2014; GB 6675.3-2014; GB 6675.4-2014; GB 19865-2005

- Product List
- One Namy AI Smart Plush Toy
  - One Type-C Charging Cable
  - One Product User Manual
  - One Creation Card
  - Multiple gifts

## 7.Disclaimer

Thank you for choosing the AI Smart Plush Toy series product—Namy. To ensure your safety and protect your legal rights, please carefully read the following content before use. By using this product, you acknowledge and agree to the following terms and commit to using the product in a lawful, appropriate environment for its intended purpose.

1. This product contains small parts. Children under three years of age must be supervised by an adult when using it. Please regularly inspect the casing and components for damage. If any abnormalities are detected, cease use immediately. Avoid using the product in locations with safety hazards, such as parking lots, escalators, or roads.

2. Do not dispose of the product carelessly. We recommend proper recycling to avoid environmental impact.

3. The image recognition and dialogue services of this product are based on AI models and may contain errors or omissions. The generated content is for reference only and should not be used as a direct basis for actions.

such as consumption, safe operation, or health judgments. The company shall not be liable for any consequences resulting therefrom.

4. If you use third-party services through this product, please comply with the terms and policies of the relevant third parties. The company does not guarantee the accuracy or applicability of third-party content and shall not be liable for any consequences arising therefrom.

If property, personal, or other losses are incurred due to failure to comply with the above guidelines when using this product, the company and its affiliated parties shall not be liable for such losses.

## 8.Warranty Card

This product is covered by the national "three guarantees" policy from the date of purchase, and our company provides a 12-month warranty service for the product.

Service Type	Service Policy
Return	Return within 7 days from the date of receipt due to product quality issues.
Exchange	Exchange within 15 days from the date of receipt due to product quality issues.
Warranty	Warranty repair within 1 year from the date of receipt due to product quality issues.

**Warranty Policy**  
Under normal usage conditions, if the product experiences quality issues due to non-human factors within the warranty period, users are entitled to free repair services. Please keep the warranty card and purchase receipt properly. Any alterations, forgeries, or loss of these documents may affect after-sales service.

The following situations are not covered by the warranty:  
1. Exceeding the warranty period;

- Damage caused by human factors (such as drops, liquid ingress, or improper operation);
- Unauthorized disassembly, flashing, or unauthorized repairs;
- Damage caused by natural disasters or other force majeure events;
- Products that have been resold and reused;
- Damage caused by illegal use or violation of the user agreement;
- Malfunctions not caused by product quality issues;
- Inability to provide valid proof of purchase or warranty card.

## 9.FCC Warning

This device complies with Part 15 of the FCC Rules. Operation is subject to the following two conditions:

(1) This device may not cause harmful interference, and (2) this device must accept any interference received, including interference that may cause undesired operation.

NOTE 1: This equipment has been tested and found to comply with the limits for a Class B digital device, pursuant to part 15 of the FCC Rules. These limits are designed to provide reasonable protection against harmful interference in a residential installation. This equipment generates, uses and can radiate radio frequency energy and, if not installed and used in accordance with the instructions, may cause harmful interference to radio communications. However, there is no guarantee that interference will not occur in a particular installation. If this equipment does cause harmful interference to radio or television reception, which can be determined by turning the equipment off and on, the user is encouraged to try to correct the interference by one or more of the following measures:

- Reorient or relocate the receiving antenna.
- Increase the separation between the equipment and receiver.
- Connect the equipment into an outlet on a circuit different from that to which the receiver is connected.
- Consult the dealer or an experienced radio/TV technician for help.

NOTE 2: Any changes or modifications to this unit not expressly approved by the party responsible for compliance could void the user's authority to operate the equipment.

The device has been evaluated to meet general RF exposure requirement. The device can be used in portable exposure condition without restriction.

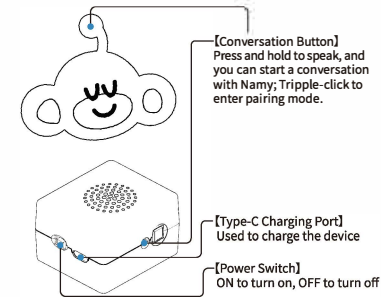
# Product Manual



# NAMY VERA

Hi, I'm Namy!  
AI Intelligence × Emotional Companionship × Fun Learning  
Now, let's embark on an immersive and wonderful journey of friendship together!

# 1.Button Guide



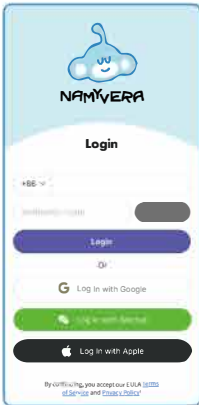
# 2.Getting Started

- ① Power On/Off**  
Slide the switch to the “ON” position, and the device will automatically start. A voice prompt will indicate successful startup. To shut down, move the switch to the “OFF” position.
- ② Application**  
Scan the QR code with your phone to download the “Namyvera” app. The app includes features such as “Content Selection,” “Device Binding,” “Role Settings,” and “Child Usage Reports.”

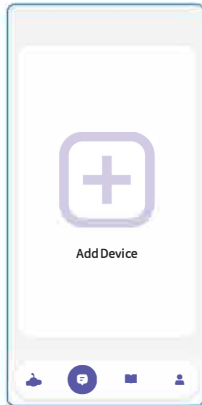


## ③ Connecting the Device

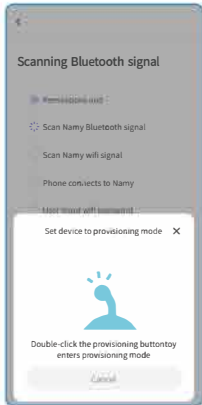
Follow the step-by-step instructions with the accompanying images



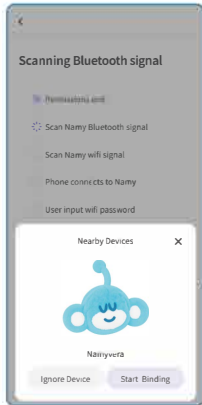
1. Register/log in using your phone number



2.Go to the app's home page and click “Add Device”;



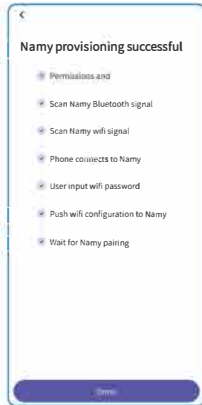
3. Tripple-click the Namy conversation button to enter pairing mode; you will hear the prompt “Entering pairing mode”;



4. Turn on Bluetooth and complete the pairing;



★ Note: Only supports 2.4GHz Wi-Fi networks; does not support 5GHz bands. Ensure the network is stable.



6.The app will display “Namy provisioning successful,” indicating the device connection is complete.

- ④ Initiate Conversation**  
Press and hold the dialogue button to start speaking; release to send the voice message.  
**[Volume adjustment]** Say “Increase volume/sound” or “Decrease volume/sound” to Namy.  
**[Roleswitching]** Say “Switch to another role” or “Switch roles” to Namy.
- ⑤ Charging instructions**  
Use the included Type-C cable to connect to a USB power source for charging. A voice prompt will notify you when the battery level drops below 20%/10%. To ensure child safety, we recommend using a certified adapter compliant with national CCC standards.
- ⑥ Reset**  
Rebinding  
Unbind the device from the current app page → Restart the device or wait for it to enter sleep mode and wake it up again → You will be automatically prompted to rebind.

**Re-networking**  
On the app page, click Delete Network → Triple-click the conversation button to enter provisioning (pairing) mode.

# 3.Namy Play Methods

- 1.Intelligent Conversation**  
Engage in free conversation with Namy, discussing feelings, asking trivia questions, playing number games, or listening to stories. English conversation is supported. During the conversation, you can interrupt or provide feedback at any time to encourage children to explore actively.
- 2.Switching Identities**  
Switch between different identities using voice commands. Currently, two interactive personas are available: “Partner Namy” and “Detective Namy.” More identities or roles will be added in the future to adapt to different growth scenarios and emotional states.

“Pal Namy” Emotional Companion Mode: Focuses on sharing positive emotions, guiding children to express their concerns and providing

humorous and heartwarming answers. This helps establish correct values, encourages children to ask questions, and provides emotional feedback. It also helps develop communication skills and emotional control.

“Detective Namy” Role-Playing Mode: This mode focuses on posing real-life detective questions, providing clues for children to sort through, and guiding them step by step to “solve the case.” This helps develop children’s logical thinking and critical thinking skills while adding an element of fun.

**3.Co-creating Stories**  
Integrated with authoritative children’s content platforms, featuring over 3,000 classic children’s songs and bedtime stories. Children can also customize characters and plotlines, with Namy creating exclusive stories on the spot to stimulate creativity and expressive abilities.

**4.Memory Function**  
Namy remembers children’s interests, dreams, and life details, precisely recalling them in subsequent conversations to continue familiar topics and establish a sense of personalized companionship.

**Note:**  
This product is powered by advanced AI large-model technology, with ongoing functional optimizations and updates. To ensure the best experience, Namy will undergo periodic system updates and content expansions based on technical upgrades, content optimizations, and user feedback during use. Product packaging, printed instructions, and other materials may lag behind update schedules and may not reflect the latest functional changes. Users should refer to the actual functions and content available at the time of use.

# 4.Maintenance and Environmental Protection

**1.Maintenance Instructions**  
This product contains electronic components and an internal battery. Avoid exposure to water, violent impacts, or direct sunlight. Clean the surface daily with a dry, soft cloth to keep the device clean. Do not use alcohol, gasoline, or other chemical solvents for cleaning. If the device or accessories exhibit abnormalities, cease use immediately and contact customer service. Do not attempt to disassemble, repair, or replace the device on your own.