

承認書

APPROVAL SHEET

客 户 : 深圳市触想智能股份有限公司

品 名 规 格 : double frequency -SMA
DESCRIPTION:

料 号 :
PART NO.:

客 户 料 号 :
CUS PART NO.:

日 期 : 2025-6-4
D A T E:

云顶呈样签章

工 程 ENGINEERING DEPARTMENT	品 保 Q C DEPARTMENT	业 务 SALES DEPARTMENT
Sean Zhang	Jasper Wu	银帅

客户承认签章

工 程 ENGINEERING DEPARTMENT	品 保 Q C DEPARTMENT	采 购 PURCHASING DEPARTMENT

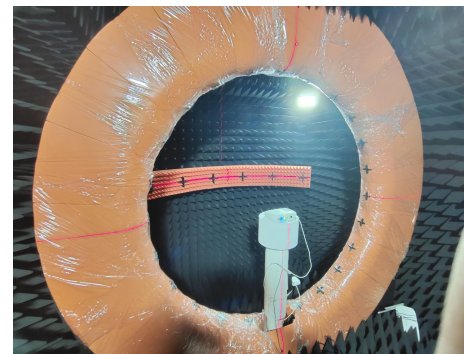
联系电话: 0755 23073599

※ 承认书一式 三份, 惠蒙贵司承认签章

※ Approval in duplicate, please signed by your company.

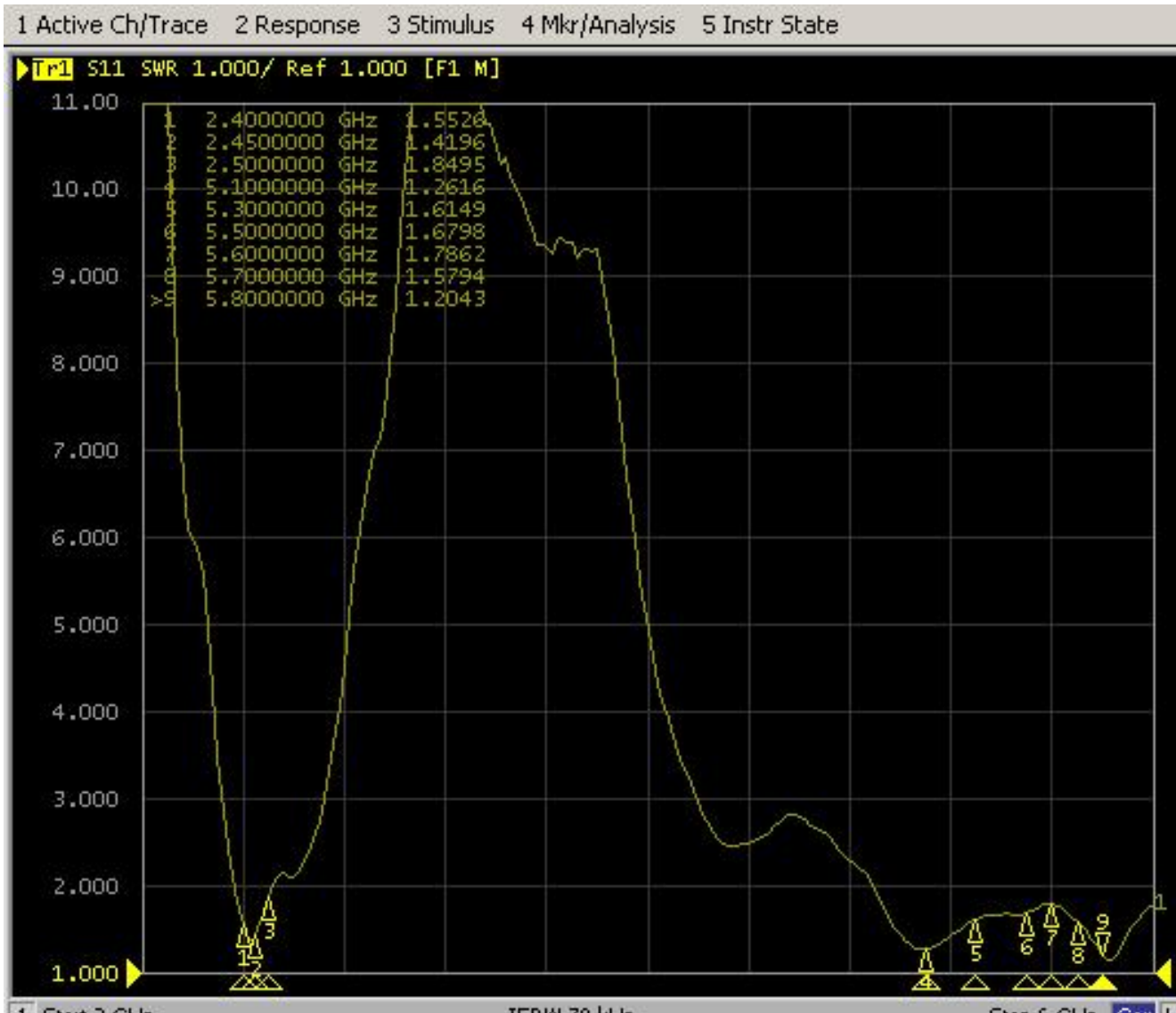
1. Test items and equipment

	测试项目	设备
1. S11 参数 (S-parameter)	1. 回波损耗 (Return Loss) 2. 电压驻波比 (VSWR)	网络分析仪: Agilent E5071B HP 8753D
2. 有源测试 (Active)	1. 发射功率 (TRP) 2. 接收灵敏度 (TIS)	1. 暗室: ETS 7x4x3 m (3D) Chamber ETS 5x3x3 m (3D) Chamber 2. 综合测试仪: Agilent 8960 E5515B x2 StarPoint SP6011 Cmw500
3. 无源测试 (Passive)	1. 天线增益 (Gain) 2. 天线效率 (Efficiency)	1. 暗室: ETS 7x4x3 m (3D) Chamber ETS 5x3x3 m (3D) Chamber 2. 网络分析仪: Agilent E5071B HP 8753D



2. Antenna performance

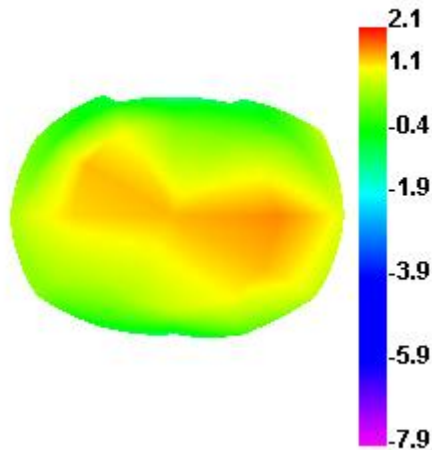
SWR



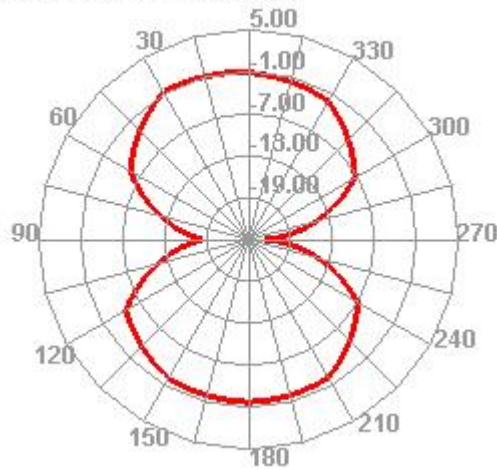
3. Antenna efficiency and gain

Passive Test For WIFI2.4		
Freq (MHz)	Effi (%)	Gain (dBi)
2400	65.61	2.17
2410	62.34	1.99
2420	55.66	1.55
2430	53.63	1.32
2440	55.67	1.55
2450	58.85	2.1
2460	55.76	2.02
2470	59.31	2.45
2480	59.02	2.43
2490	61.59	2.73
2500	63.31	2.95

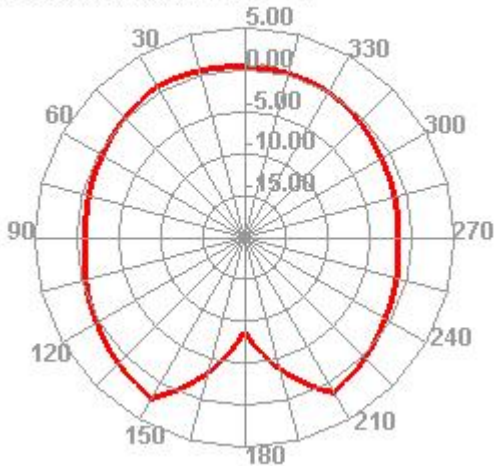
2450.000MHz



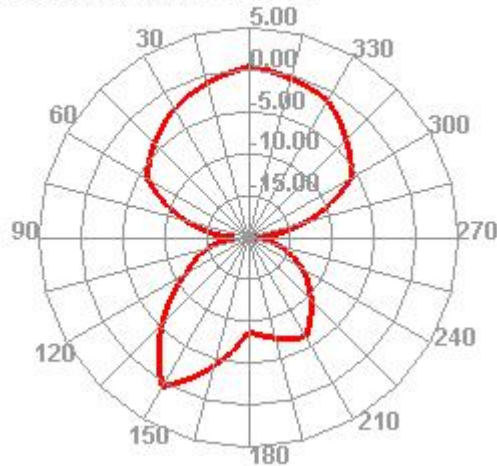
2450.000MHz H



2450.000MHz E1

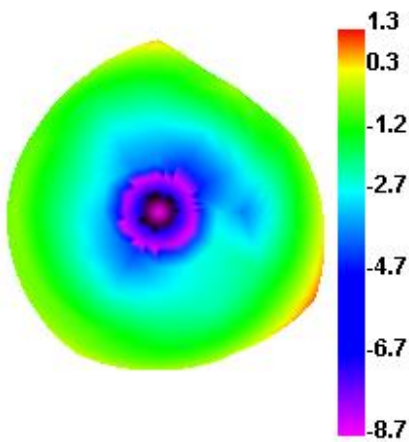


2450.000MHz E2

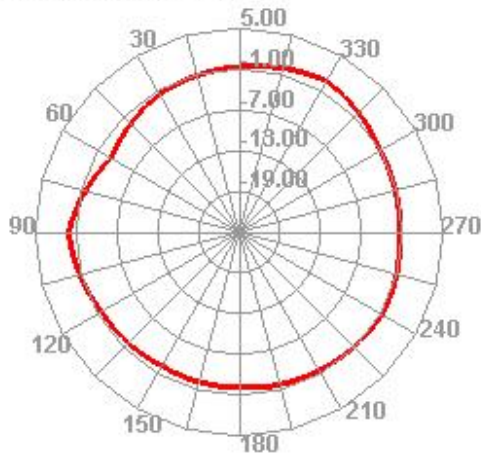


Passive Test For WIFI5.8		
Freq (MHz)	Effi (%)	Gain (dBi)
5150	57.65	1.29
5200	52.36	0.76
5250	46.79	0.16
5300	49.36	0.4
5350	58.05	1.13
5400	65.74	1.8
5450	58.96	1.53
5500	60.61	1.74
5550	63.45	2.28
5600	60.14	2.21
5650	56.98	2.02
5700	56.92	1.78
5750	59.28	2.02
5800	54.71	1.05
5850	47.4	0.66

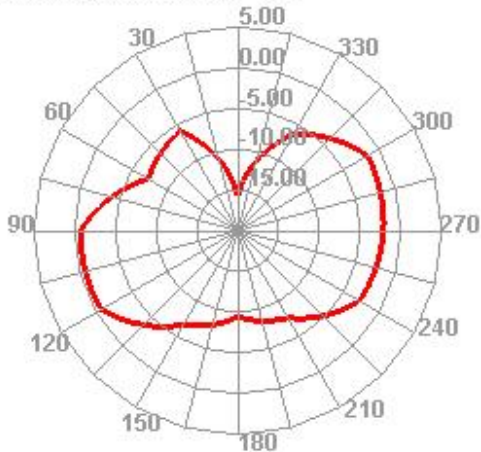
5150.000MHz



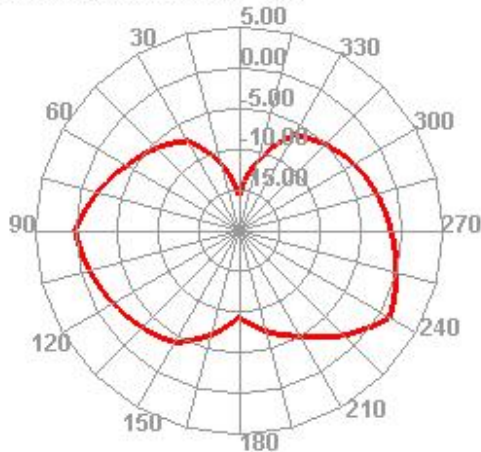
5150.000MHz H



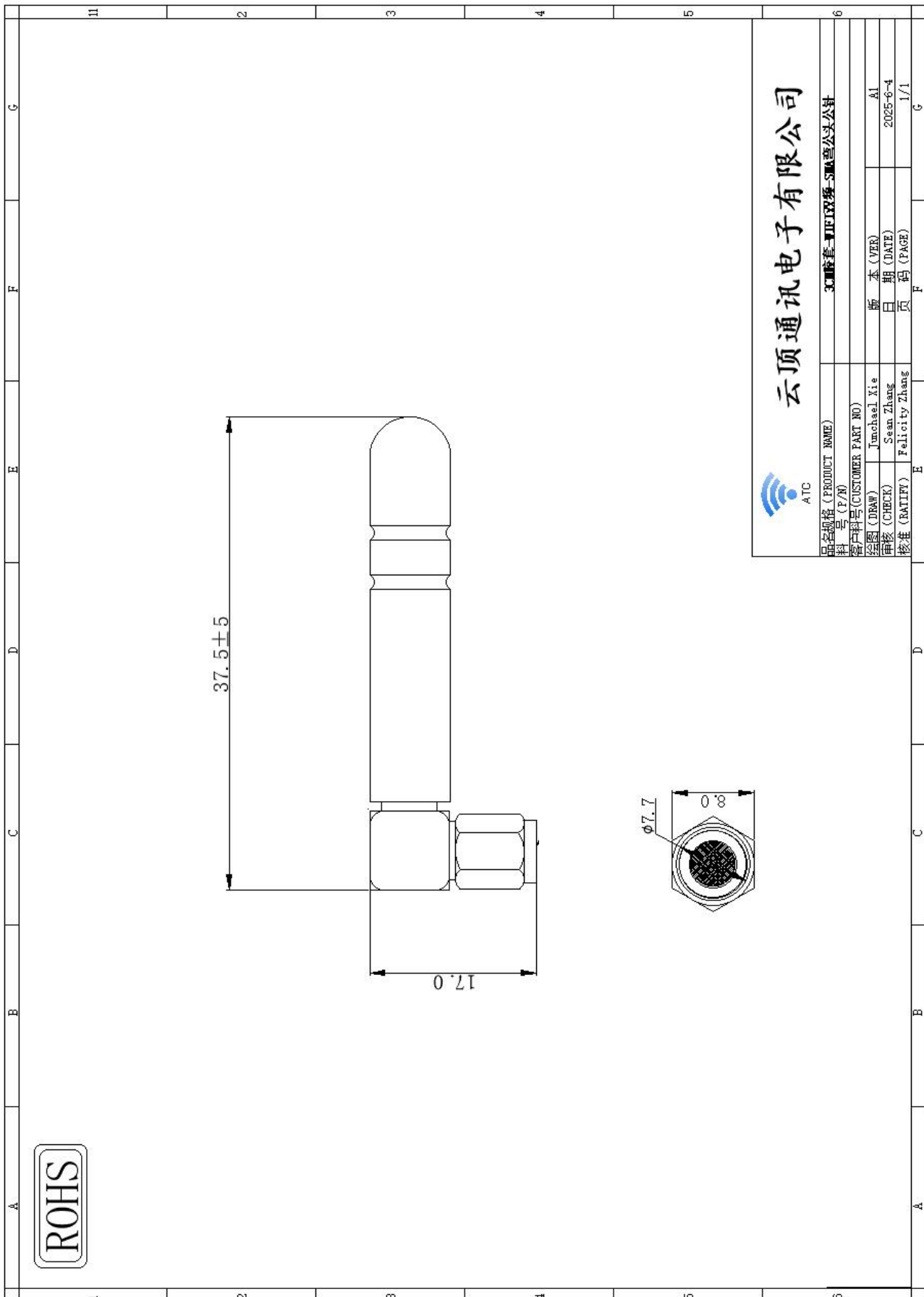
5150.000MHz E1



5150.000MHz E2



4. Antenna structure diagram:



电器技术参数

电性能指标		Electrical Specifications	
频率范围	2400~2500/5150~5850MHz	Frequency Range	2400~2500/5150~5850MHz
电压驻波比	≤2.0	VSWR	≤2.0
输入阻抗	50 Ω	Input Impedance	50 Ω
最大增益	2.95DBI	Maximum gain	2.95DBI
最大输入功率	50W	Maximum Input Power	50W
机械指标		Mechanical Specifications	
天线颜色	黑色	Antenna Color	BLACK
接口形式	R-SMA	Input connector	R-SMA
天线长度	37.5MM	Length	37.5MM
工作温度	-40℃~+85℃	Working Temperature	-40℃~+85℃
工作湿度	20~80%	Working Humidity	20~80%