

REMOTE CONTROL DINOSAUR INSTRUCTIONS

WARNING:
CHOKING HAZARD - Small parts.
Not for children under 3 years.

BATTERY USAGE NOTES

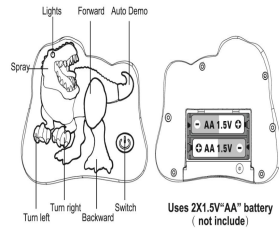
-This product uses a 3.7 V rechargeable battery pack, the remote control uses 2 knots 1.5 V AA non-rechargeable batteries.
how to take out and put the battery: with a screwdriver loosen, screw, lift the battery cover, according to the correct polarity put, incoming and outgoing batteries;
-unrechargeable batteries can not be recharged;
-rechargeable batteries can only be recharged under adult supervision;
-only batteries of the same model or equivalent to the recommended model, batteries can be used;
-no more than the recommended amount of power can be connected;
-different types of batteries or old and new batteries can not be mixed;
-batteries should be put in the correct polarity;
-depleted batteries should be removed from toys;
-The power terminal shall not be short-circuited.

CARE AND MAINTENANCE

-Always remove the batteries from the transmitter if it is not used for a long time.
-Wipe the toy gently with a clean cloth.
-Keep the toy away from direct sources of heat.
-Do not immerse the toy in water, as this could damage electronic components.
-Replace batteries when they become less powerful.
-Operation temperature 0-40 °C.

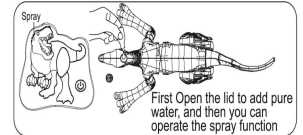
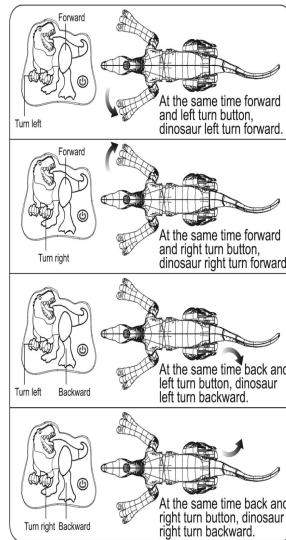
Note: Discard the toy at will, it may affect the environment, please recycle it properly.

REMOTE CONTROL FUNCTION OPERATION INSTRUCTIONS

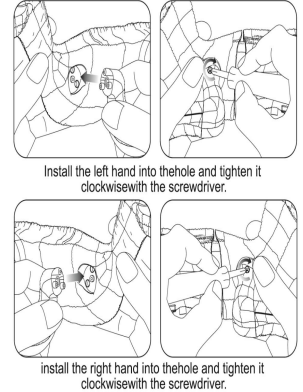


Power Switch
Click the button -- Power on
Long Press -- Power off
Auto Demo: Click the button, the velociraptor will show the walking/forward/backward/turn left/turn right/wagging its tail, swaying its body with different sounds automatically.
Indicator: Frequency connection or remote control signals fail : LED Indicator keep Flashing
Frequency connected successfully without any operating actions : LED Indicator Constantly On.
Dinosaur Move/Turn LED lights: blinking
Power saving mode: If no action is taken for 5 minutes, the remote control will be turned off. You should turn on the power button again to start.

DINOSAUR INSTRUCTIONS



DINOSAUR LIMB INSTALLATION INSTRUCTIONS



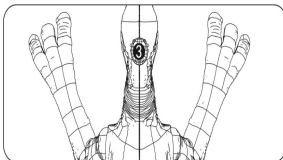
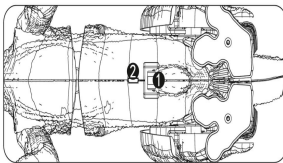
DINOSAUR BODY

1. Switch ① 2. charge hole ② 3. Water Inlet ③
4. Other functions

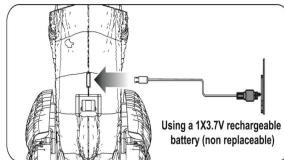
Lighting and sound effects: Forward or backward with 3 different simulated sound and walking. Simultaneous luminescence of the mouth.

Low battery: If the velociraptor with low power, its action stopped after 3 seconds with 'DI DI DI' sound, means it needs to be charged.

Sleeping automatically: The velociraptor enter into the sleeping mode without any operating in 5 minutes; turn off the power switch then turn it on again or press the DEMO button to restart the velociraptor.



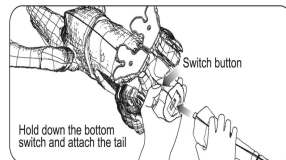
CHARGING INSTRUCTIONS



CHARGING PORT

-Please insert the Micro USB plug of the USB cable into the USB socket from the bottom of the velociraptor.
-Then insert the another USB plug into the interface of the computer or other adapters (such as mobile phone charger).
-Full charging time takes about 2 hours; Operating time about 2 hours.
-The indicator from the bottom of the velociraptor turn to solid RED when in charging.
-The indicator from the bottom of the velociraptor turn to OFF when fully charged.
-Take away the USB cable, switch the power on to start the game.

DINOSAUR TAIL INSTALLATION INSTRUCTIONS



PROBLEM SOLVING

THE PROBLEM	REASON	COUNTERMEASURES
Reaction of the power switch or indicator light off	-Low battery of velociraptor or the transmitter. -System program stop due to the velociraptor or the transmitter interference.	-Re-charge the car or replace the battery of the transmitter. -Take out the battery and re-load into the system for system reset.
Out of control	-A remote velociraptor with the same frequency is operating around you and the velociraptor is locked with another transmitter. -Beyond the remote range.	-Move it to the place with no wireless interference. -Shut off the transmitter of the same type and re-start the machine.
Interrupted or slow remote action	-High-frequency interference or near high-voltage wires, transformers and some buildings. -Low battery of the transmitter and battery.	-Avoid playing in such environment or choose other place for playing. -Replace new battery of the transmitter. -Please get close to the transmitter and play.
Slow velociraptor running or running failure	-Battery exhaustion. -Hair, soft things or other dirt are blocked on the hub. -Battery aging or poor motor.	-Re-charge the battery. -Take out the foreign objects carefully. -Contact with the distributor for repair if it still cannot be restored after the failure exclusion.

MULTIPLE VELOCIRAPTORS OPERATED AT THE SAME TIME

1. Turn on the velociraptor 1, then turn on the transmitter 1, push the joystick or press any one of the keys on the transmitter, and the velociraptor 1 is locked and connected to the transmitter 1 successfully.
2. Turn on the velociraptor 2, then turn on the transmitter 2, push the joystick or press any one of the keys on the transmitter, and the velociraptor 2 is locked and connected to the transmitter 2 successfully.
3. Turn on 3 4 5 ...N velociraptor and so on, then turn on the transmitters accordingly till they are locked and connected with their own velociraptor, now the velociraptors can be operated by their own transmitters independently.
(If not follow the steps as mentioned above, a transmitter can operate 2 or several velociraptors at the same time.)

Warning:

Changes or modifications to this unit not expressly approved by the party responsible for compliance could void the user's authority to operate the equipment.

NOTE:

This device complies with part 15 of the FCC Rules. Operation is subject to the following two conditions: (1) This device may not cause harmful interference, and (2) this device must accept any interference received, including interference that may cause undesired operation.

FCC Statement:

This equipment has been tested and found to comply with the limits for a Class B digital device, pursuant to part 15 of the FCC Rules. These limits are designed to provide reasonable protection against harmful interference in a residential installation. This equipment generates, uses and can radiate radio frequency energy and, if not installed and used in accordance with the instructions, may cause harmful interference to radio communications. However, there is no guarantee that interference will not occur in a particular installation. If this equipment does cause harmful interference to radio or television reception, which can be determined by turning the equipment off and on, the user is encouraged to try to correct the interference by one or more of the following measures:

- Reorient or relocate the receiving antenna.
- Increase the separation between the equipment and receiver.
- Connect the equipment into an outlet on a circuit different from that to which the receiver is connected.
- Consult the dealer or an experienced radio/TV technician for help.