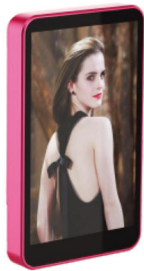


■ 使用说明书 ■
Instruction manual



* 请在使用本产品之前阅读使用说明书 *

用户须知:

- 拆卸和改造: 本机由高精元器件组成, 禁止用户自行拆卸, 修理 改装或重摔, 以免对本机造成损坏, 如本机出现故障, 请及时联系售后服务中心进行维修
- 使用和存放环境: 请勿在高温 高压 强磁场 灰尘大 潮湿等环境中使用或存放本机, 亦不可暴晒和浸入水滴, 勿扔放, 震动机器, 以免损坏机器的零部件
- 包装材料处理: 所有包装材料, 如胶带. 锁扣. 塑胶片. 捆绑线. 标签等都不属于产品的一部分, 不适于儿童玩耍, 为了您孩子的安全, 请妥善处理以上包装材料

4. 机器的维护和保养:

- 请勿用尖锐物件在机器表面刮划, 为保护机器, 建议您使用后放回原包装
- 如机器表面有灰尘或水滴溅入, 请用干的布轻轻擦拭, 保持机身清洁, 请勿使用挥发性有机溶剂 (如汽油. 稀释剂) 清洗机器表面
- 机器长时间放置不用时, 请切断电源
- 在机器使用前请检查各接口是否有异物或破损, 如有异物请尽快取出, 如有破损请咨询厂家进行维修

充电器使用说明:

- 充电器不是玩具, 仅为机器外部供电使用
- 3岁以下儿童禁止使用
- 不要让儿童自己插入或拔出电源插头
- 机器只能使用推荐的符合国标的充电器

- 用清洁液清洁机器时应与充电器断开
- 请使用安全隔离充电器
- 定期检查机器的电线. 插头. 外壳和其它部件是否损坏, 发现损坏时应停止使用, 直至修复完好

温馨提示: 基于本产品的研发理念, 本公司产品更加确保人员的使用安全, 因此特别提示您:

- 本产品在充电状态时是不可以工作的。
- 开机无反应的情况下请关闭设备充电20分钟以上再使用。
- 产品充电时, 后面红灯亮起, 充电完成后, 红灯关闭。
- 在长期未使用的情况下建议对产品每1个月进行充电, 这样可以保证产品正常使用并延长产品的使用寿命
- 充电方法: 请使用输出5V-1000MA充电器 连接USB线连接机器USB 充电时间 (2-3小时)

产品功能:

- 同屏功能: 让手机后置摄像头自拍更方便 更清晰
- 强力磁吸: 吸附更稳 不伤手机
- 系统适配: iOS系统9.0以上, Android2.0以上, HarmonyOS系统3.0以上, MagicOS系统4.0以上等手机
- 蓝牙功能: 无需额外控制器, 按下拍照键即可拍照

功能说明:



电源开关: 拨动开关可打开或关闭机器

屏幕旋转: 可将屏幕旋转180度

显示比例: 可切换全屏模式跟1:1模式

亮度调节: 调节屏幕的亮度

连接方法步骤:

步骤一: 打开电源开关, 开机后先打开手机蓝牙, 搜索蓝牙名称: HCBT进行连接, 成功后再去镜像

步骤二: 从手机屏幕右上角向下滑动, 打开快捷菜单栏, 找到手机的投屏功能(苹果手机为“屏幕镜像”图标, 安卓手机为“无线投屏”图标)点击打开;或者在设置>更多连接>投屏功能。

步骤三: 在搜索列表中找到“Hccast-p2p”, 点击链接设备

(首次连接需输入验证码“1234”)



注: 1. 使用说明只供参考 机器软件升级 按实物为准。如产品内容或参数有变更时, 请以当前产品为准, 恕不另行通知。

保修条款:

- 商品自售出之日起七日内, 如发生性能故障, 商品机身及包装必须保持完整, 可换同种型号商品 (须经检查), 但不包括人为损坏。
- 商品自售出之日起保修一年, 终身维护, 配件不在保修范围内。
- 保修服务只限正常使用下有效, 一切人为损坏 (包括自行拆机, 使用不当) 不在保修范围内。

4. 保修时需提供本卡, 未能提供本卡或私自涂改本卡, 本公司有权作报废处理。

| 包装配件 | | | | | |
|------|----|----------|---------|-----|--|
| 彩盒 | 机器 | TYPE-C 线 | 说明书/保修卡 | 合格证 | |
| *1 | *1 | *1 | *1 | *1 | |

| | | | | | |
|-------|--|----|--|------|--|
| 用户姓名 | | 性别 | | 年龄 | |
| 通信地址 | | | | | |
| 联系电话 | | | | 邮编 | |
| 购买地点 | | | | | |
| 购买日期 | | | | 销售单号 | |
| 品名及规格 | | | | 机身编号 | |
| 经销商签名 | | | | 用户签名 | |



Instruction Manual

Please read this instruction manual carefully before using the product.

User Instructions:

1. Disassembly and Modification Prohibition: This device is constructed with high-precision components. It is strictly forbidden for users to disassemble, repair, modify, or subject it to heavy impacts, as this may cause damage. In case of device malfunction, please promptly contact the after-sales service center for professional repair.

2. Appropriate Usage and Storage Environments: Avoid using or storing the device in environments with high temperature, high pressure, strong magnetic fields, excessive dust, or high humidity. Additionally, refrain from exposing it to direct sunlight or immersing it in water. Do not throw or subject the device to violent vibrations to prevent damage to its internal components.

3. Proper Disposal of Packaging Materials: All packaging materials, including tape, locks, plastic sheets, binding wires, and labels, are not part of the product and are not suitable for children's play. For the safety of your children, please ensure the proper disposal of these packaging materials.

4. Device Maintenance and Care Guidelines:

* Refrain from scratching the device surface with sharp objects. To safeguard the device, it is advisable to place it back in the original packaging after use.

* If dust accumulates on the device surface or water splashes onto it, gently wipe with a soft, dry cloth to maintain cleanliness. Do not use

volatile organic solvents such as gasoline or thinner to clean the device surface.

* When the device is not in use for an extended period, please disconnect the power supply.

* Before and after using the device, carefully inspect each interface for foreign objects or damage. If foreign objects are detected, remove them promptly. In case of damage, consult the manufacturer for repair instructions.

Charger Usage Instructions:

1. The charger is designed only for powering the device.

2. It is strictly prohibited for children under 3 years old to use the charger.

3. Do not allow children to insert or unplug the power plug independently.

4. The device must be used with a recommended charger that complies with national standards.

5. When cleaning the device with cleaning fluid, ensure that it is disconnected from the charger.

6. Please use a safety-isolated charger for charging.

7. Regularly check the wires, plugs, casing, and other components of the device for any signs of damage. If damage is detected, stop using the device until it has been repaired.

Tips: Based on the R & D concept of this product, our company places a high emphasis on user safety. Therefore, we would like to draw your attention to the following points:

1. This product will not function while it is being charged.

2. If the device fails to respond when powered on, please turn it off and charge it for at least 20 minutes before attempting to use it again.

3. When the product is charging, the red indicator light on the back will be illuminated. Once the charging is complete, the red light will turn off.

4. If the product has not been used for a long time, it is recommended to charge it once a month to ensure its normal operation and extend its service life.

Charging Method: Please use a charger with an output of 5V - 1000MA. Connect the USB cable to the USB port of the device. The charging time typically ranges from 5 to 8 hours.

Product Functions:

1. Screen Mirroring Function: Enables more convenient and clear selfies using the rear camera of your mobile phone.

2. Strong magnetic attraction: More stable while taking selfies, without causing damage to your phone.

3. System Compatibility: Compatible with mobile phones running iOS system 9.0 and above, Android system 2.0 and above, HarmonyOS system 3.0 and above, MagicOS system 4.0 and above, etc.

4. Bluetooth function: No additional controller is required, just press the shutter button to take a photo.

Functional specification:



Power Switch Operation: Toggle the switch to turn the device on or off.

Screen Rotation Function: The screen can be rotated 180 degrees for optimal viewing.

Display Ratio Adjustment: Allows you to switch between full-screen mode and 1:1 mode.

Brightness Adjustment Feature: Easily adjust the brightness of the screen to suit your preferences.

Connection Method Steps:

- Turn on the power switch, turn on the phone's Bluetooth first, and search for the Bluetooth name: Connect to HCBT and then go to the mirror after success
- Swipe down from the top right corner of the phone screen to open the shortcut menu bar. Locate the screen mirroring function on your mobile phone (for Apple phones, it is labeled as "Screen Mirroring", and for Android phones, it is usually named "Wireless Screen Mirroring"). Click to activate it

Alternatively, you can access it through Settings > More Connections > Screen Mirroring function.

3. In the search list, find "Hccast-p2p" and click to establish a connection with the device. (For the first connection, you will need to enter the verification code "1234".)



Note:

1. The usage instructions provided are for reference only. In case of machine software upgrades, the actual product functionality may vary. If there are any changes in the product content or parameters, the current product specifications shall prevail. No further notice will be provided.

| Packaging Accessories | | | | | |
|-----------------------|--------|--------------|----------------------|---------------------------|--|
| Color box | Device | TYPE-C cable | Manual/warranty card | Certificate of conformity | |
| *1 | *1 | *1 | *1 | *1 | |

| | | | | | |
|-------------------|--|--------|--|----------------------|--|
| User Name | | Gender | | Age | |
| Mailing Address | | | | | |
| Contact Number | | | | Postal Code | |
| Purchase Location | | | | | |
| Purchase Date | | | | Sales Order Number | |
| Product Name | | | | Device Serial Number | |
| Dealer Signature | | | | User Signature | |

Warning: All packaging materials (such as tape, plastic bags, plastic sheets, binding wires, and labels) and small internal accessories of the device should be kept out of reach of children under 3 years old to prevent the risk of suffocation. Use the device under adult supervision at all times.

When the surrounding temperature is <0C, the device should be moved indoors and allowed to acclimate to room temperature for 2 hours before use.



FCC Warning:

This equipment has been tested and found to comply with the limits for a Class B digital device, pursuant to part 15 of the FCC Rules. These limits are designed to provide reasonable protection against harmful interference in a residential installation. This equipment generates, uses and can radiate radio frequency energy and, if not installed and used in accordance with the instructions, may cause harmful interference to radio communications. However, there is no guarantee that interference will not occur in a particular installation. If this equipment does cause harmful interference to radio or television reception, which can be determined by turning the equipment off and on, the user is encouraged to try to correct the interference by one or more of the following measures:

- Reorient or relocate the receiving antenna.
- Increase the separation between the equipment and receiver.
- Connect the equipment into an outlet on a circuit different from that to which the receiver is connected.
- Consult the dealer or an experienced radio/TV technician for help.

Caution: Any changes or modifications to this device not explicitly approved by manufacturer could void your authority to operate this equipment.

This device complies with part 15 of the FCC Rules. Operation is subject to the following two conditions:

(1) This device may not cause harmful interference, and (2) this device must accept any interference received, including interference that may cause undesired operation.

This equipment complies with FCC radiation exposure limits set forth for an uncontrolled environment. This equipment should be installed and operated with minimum distance 0cm between the radiator and your body.