

Giocanto

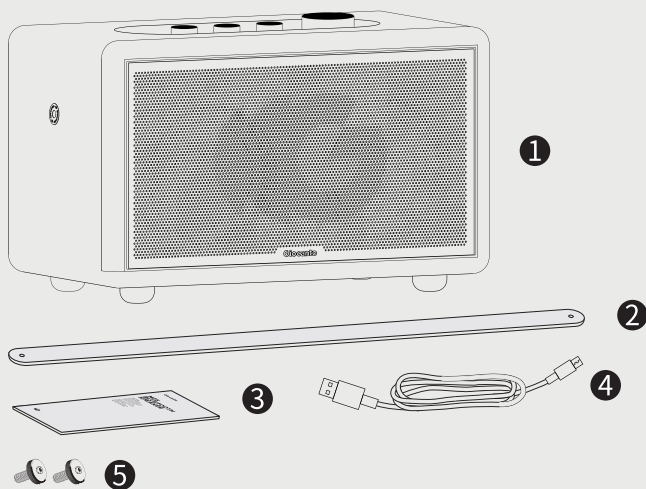
M25 BLUETOOTH SPEAKER

User Manual



01

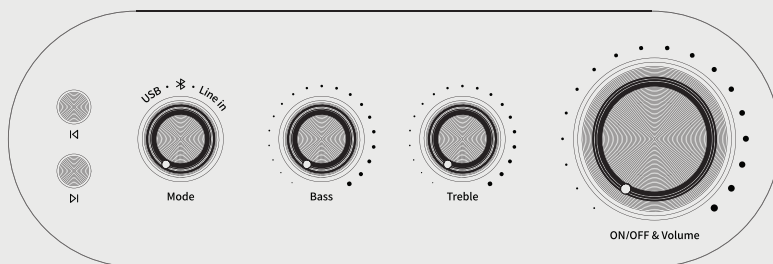
Check the item list



- ① M25 wireless portable speaker *1
- ② Removable hand strap *1
- ③ User manual *1
- ④ Power cord *1
- ⑤ Nuts *2

02

Key function introduction



Power button: long press for 3 seconds to power on, long press for 3 seconds to power off / volume knob / short press play pause button

treble knob

bass knob

source mode switch knob

iD short press previous song / long press rewind button

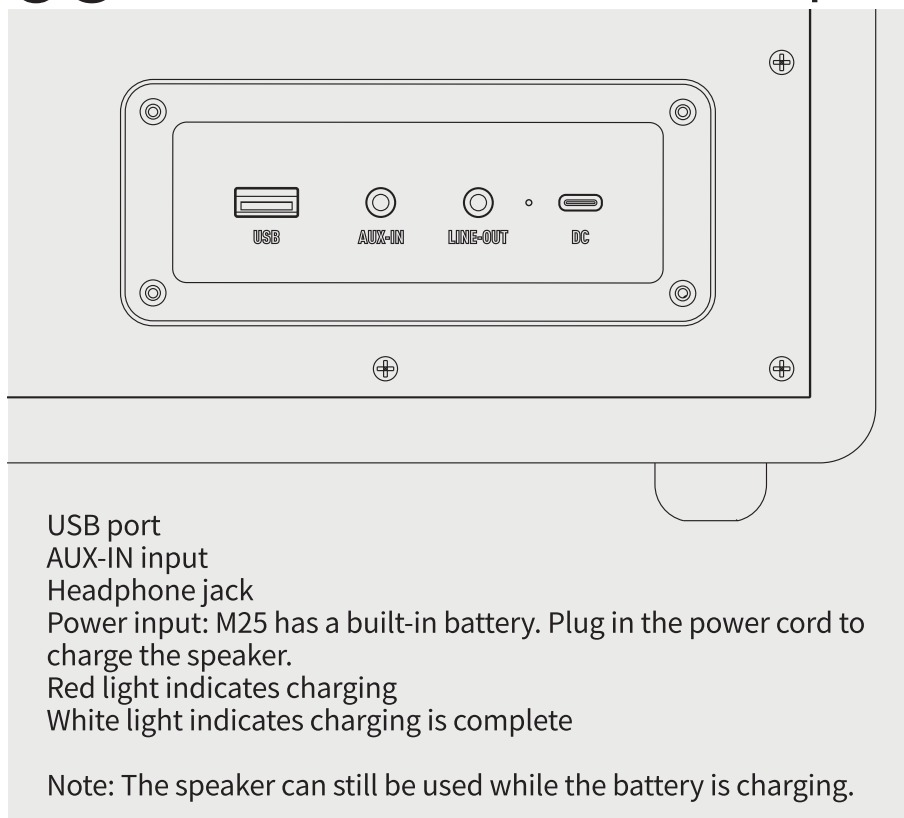
Dl short press next song / long press fast forward button

Note: if the Bluetooth is not connected within 10 minutes after powering on, the speaker will automatically shut down.

When connected, double-click the play knob to disconnect the current device.

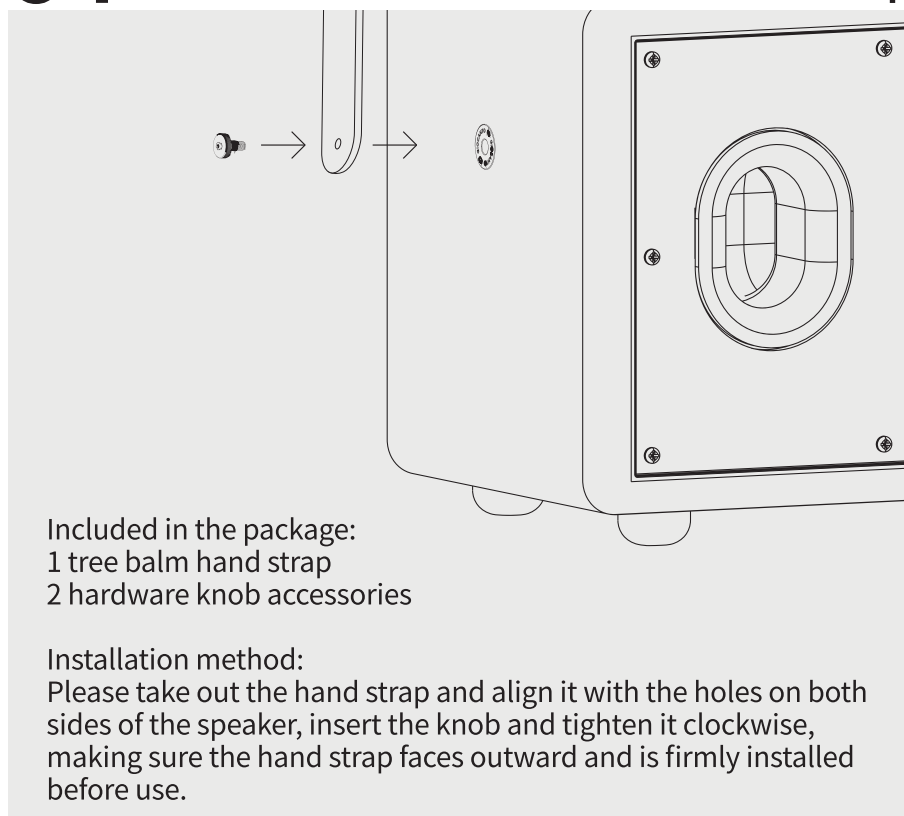
03

Back layout description



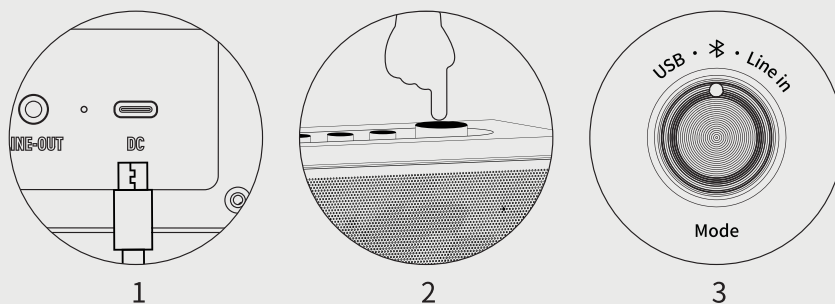
04

Removable hand strap



05

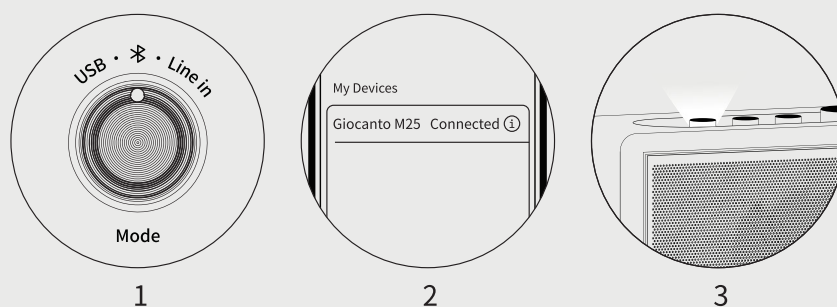
Quick Start Guide



1. M25 is equipped with a built-in battery. Plug in the power cord to charge the speaker first.
2. Press and hold the "power button" for 3 seconds to start the speaker. The indicator light will light up after the prompt tone is heard; the light will automatically go out after 5 seconds of no operation.
3. Turn the audio source knob to "Bluetooth mode" and turn on the Bluetooth pairing connection of the mobile phone until it is successfully connected to M25.

06

Connect via Bluetooth

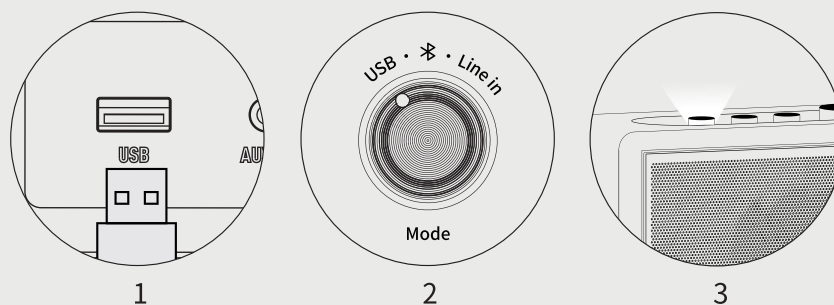


1. Turn the audio source knob and align the round hole with the Bluetooth logo to select the Bluetooth mode.
2. Turn on the device Bluetooth, select "Giocanto M25" and complete the pairing.
3. The white light flashes to indicate pairing. After the connection is successful, the white light will be on and the light will go out after 5 seconds of no operation.

Note: It supports automatic reconnection when powered on. After disconnection, it can automatically reconnect within 12 meters without obstacles.

07

Connect via USB

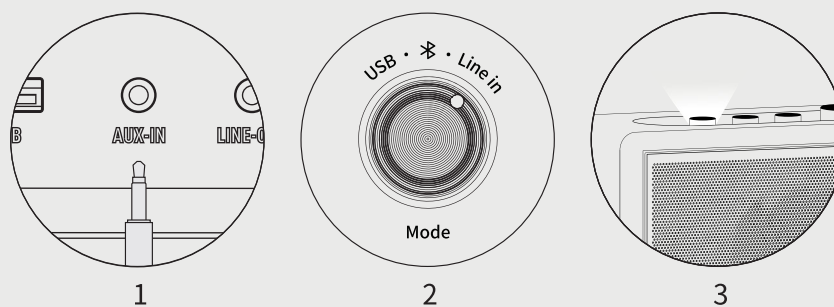


1. Insert the USB device containing the audio source into the USB port of the speaker.
2. Turn the audio source knob and align the round hole with the USB logo to switch to USB mode.
3. The white light will be on after the connection is successful, and the light will go out after 5 seconds of no operation.
4. You can use the up and down buttons to switch the USB audio content.

Note: M25 supports MP3,WMA,SBC,WAV,AAC,FLAC,AIF,AMR,APE format files.

08

Connect via AUX port



1. Connect the 3.5mm audio cable to the "AUX-IN" port of the speaker, and connect the other end to the audio device.
2. Turn the audio source knob and align the round hole with the AUX logo to switch to AUX mode.
3. After the connection is successful, the white light will be on, and the light will go out after 5 seconds of no operation.

Note: M25 does not include an audio cable.

FAQ and Troubleshooting

The product does not charge or cannot be turned on?

1. Check if there is any foreign object in the charging port that causes poor contact
2. Please make sure that the charging cable is fully inserted into the port and the indicator light is on
3. Try to change the charging head/charging cable for charging
4. Please press and hold the power button for more than 3 seconds to confirm whether the speaker is turned on

Note: If the problem still cannot be solved, please contact customer service in time.

Bluetooth cannot connect or disconnects frequently?

1. Please turn on the Bluetooth function of your mobile phone, computer, etc. and make sure it is within the connection range
2. Please disconnect other paired devices and search for "M25" again to connect
3. Please keep the device and the speaker within 12 meters without any obstacles, such as walls or other electronic equipment
4. Avoid using the speaker near microwave ovens, wireless routers, high-power appliances and other devices

Note: Low battery will cause freezes, etc. Please make sure that the speaker has sufficient battery.

Volume is too low or there is no sound?

1. Please check if your phone, computer, etc. are muted or paused
2. Please turn up the M25 volume knob appropriately to ensure that the audio signal output is normal
3. Please confirm that the current input source is the correct Bluetooth/USB/AUX-IN channel, and restart the speaker if necessary

Noise, popping or freezing during playback?

1. It is recommended to replace high-definition audio files or more stable playback source devices
2. Appropriately lower the M25 volume or the sound source device volume to avoid overload distortion
3. Change the playback position, stay away from interference sources, or try wired input playback

Abnormal sound quality (distortion/unbalanced)?

1. Please fine-tune the bass/treble knob to restore balanced sound effects
2. Try to avoid placing the speaker close to the wall or in a position with strong resonance, such as a glass cabinet
3. Turn or move the speaker to obtain a more natural sound field feedback

How to maintain and maintain it in daily life?

1. The speaker has a built-in battery and does not require an external power supply for playback. It is recommended to charge before use, and do not connect to a power source to play to avoid damaging the battery
2. Do not disassemble or modify the speaker, and avoid dropping, knocking or strong vibration to avoid damaging the internal structure. Unauthorized changes will affect after-sales service rights
3. Charge regularly to avoid long-term power loss and damage to the battery. In a humid or high temperature environment, it is recommended to power on for half an hour every day to prevent internal components from getting damp and moldy

Legal/Safety/After-sales

Intellectual Property and Trademark Statement

The product design, packaging and interface of GIOCANTO M25 are original to our company and are protected by law. Unauthorized copying, imitation, resale or commercial use is prohibited.

"Giocanto" and related logos are registered trademarks. Unauthorized use, tampering or forgery is strictly prohibited. Other trademarks belong to the original right holders and shall not be used without authorization. For legal information or authorization details, please visit the official website WWW.GIOCANTO.COM, and it is recommended to check for updates regularly.

Software and technical compatibility description

GIOCANTO M25 supports multi-platform Bluetooth protocols and standard input methods, and has wide compatibility.

If the connection is abnormal, stuck or delayed due to differences in device systems, Bluetooth drivers or third-party platforms, it is within the normal technical range. It is recommended to keep the system updated and use the recommended connection method.

If you encounter problems, please refer to "Frequently Asked Questions Troubleshooting" or contact after-sales.

Risk of electric shock and maintenance tips

Do not disassemble or repair the machine by yourself. There are no replaceable parts inside. If there is a malfunction, please contact Giocanto after-sales or authorized repair points.

Please turn off the power when cleaning and wipe with a soft dry cloth.

Do not use corrosive or conductive liquids, and avoid long-term use or storage in high temperature, humidity or strong magnetic environments.

Important safety instructions

Precautions before use

1. Please read the instructions before use to understand the functions and operation methods.
2. Use a power adapter that meets the national standards, and do not use non-original equipment for power supply.
3. Avoid using in humid, high temperature, severe cold or corrosive gas and dusty environments.
4. Please keep away from heat sources, open flames and direct sunlight.
5. Do not place in poorly ventilated areas, such as closed cabinets.
6. Do not use for purposes other than those described in the instructions.

Daily operation instructions

1. Avoid water ingress. If contact with liquid, please turn off the power immediately and contact after-sales.
2. Please hold the plug when plugging and unplugging the power supply, and do not pull the power cord.
3. Keep the socket ventilated and do not block the heat dissipation holes.
4. The speaker is not waterproof or drop-proof. Place it properly away from the edge of the fall.
5. If installing a bracket, please use compliant accessories and follow the instructions.
6. When moving the device, please use both hands to move it steadily to avoid tipping and damage.

Reminders for use by children and vulnerable groups

1. The device, power cord and packaging should be placed in an area that children cannot reach.
2. This product is not a toy. It is strictly forbidden for children under 14 years old to operate it alone.
3. People wearing pacemakers should avoid placing the device close to the chest. If you have any questions, please consult a doctor.

Battery and recycling instructions

1. This product has a built-in lithium battery. Do not disassemble, drop or throw it into fire.
2. The rechargeable battery is not removable. Do not try to remove the battery from the speaker to avoid damaging the speaker.
3. Please hand over the scrapped equipment to a regular electronic waste recycling station in accordance with local regulations to avoid environmental pollution and safety risks.

Product warranty policy

Warranty period and scope

1. Within 1 year from the date of receipt, the product can enjoy free whole machine warranty if there is a non-human functional failure under normal use.
2. The warranty does not cover non-functional problems such as scratches on the appearance, subjective evaluation of sound quality, aging of accessories, and natural battery decay.
3. Promotional gifts, second-hand resale and overseas parallel imports are not covered by the warranty.

Prerequisites for free warranty

1. Provide valid proof of purchase (invoice, order screenshot, etc.);
2. The product is not damaged by human beings and has not been dismantled without authorization;
3. The failure is not caused by misuse or external factors;
4. Apply within the warranty period.

Description of non-warranty scope

1. Failure caused by improper human operation such as misuse, falling, liquid ingress, dust ingress, use of non-original adapters, etc.;
 2. Problems caused by unauthorized disassembly, modification or use of non-original accessories;
 3. Abnormalities caused by the use of unauthorized software or connection methods;
 4. Damage caused by force majeure such as network and voltage abnormalities, lightning strikes, floods, etc.;
 5. Performance degradation of consumables such as batteries due to natural aging or overcharging;
 6. Non-fault problems such as Bluetooth disconnection, software freezes, and differences in sound quality preferences;
 7. Product labels, anti-counterfeiting codes or serial numbers are missing or damaged;
 8. Policy incompatibility problems caused by cross-regional use.
- Minor scratches and stains on the appearance are normal wear and tear and do not constitute quality problems.

Warranty service content and form

Within the warranty scope, we will provide one of the following services depending on the product situation:

1. Free repair of faulty parts or replacement of damaged modules;
2. Replacement of original whole machine of the same model or replacement product with equivalent performance;
3. If repair or replacement is not possible, discount compensation will be given within a reasonable range.

⚠ All replaced parts belong to the brand and users are not allowed to claim them back.

Special Tips:

If you need to learn more about the repair process, submit an after-sales application, or confirm the authenticity of the product, please visit WWW.GIOCANTO.COM or contact the official customer service.

FCC Statement

This device complies with part 15 of the FCC Rules. Operation is subject to the following two conditions: (1) This device may not cause harmful interference, and (2) this device must accept any interference received, including interference that may cause undesired operation. This equipment has been tested and found to comply with the limits for a Class B digital device, pursuant to part 15 of the FCC Rules. These limits are designed to provide reasonable protection against harmful interference in a residential installation. This equipment generates, uses and can radiate radio frequency energy and, if not installed and used in accordance with the instructions, may cause harmful interference to radio communications. However, there is no guarantee that interference will not occur in a particular installation. If this equipment does cause harmful interference to radio or television reception, which can be determined by turning the equipment off and on, the user is encouraged to try to correct the interference by one or more of the following measures:

- Reorient or relocate the receiving antenna.
 - Increase the separation between the equipment and receiver.
 - Connect the equipment into an outlet on a circuit different from that to which the receiver is connected.
 - Consult the dealer or an experienced radio/TV technician for help.
- Caution: Any changes or modifications to this device not explicitly approved by manufacturer could void your authority to operate this equipment.

RF Exposure Information

The device has been evaluated to meet general RF exposure requirement. The device can be used in portable exposure condition without restriction.

Giocanto

LISTEN YOUR WAY TO UTOPIA

WWW.GIOCANTO.COM
SHENZHEN JIYINTANG TECHNOLOGY CO., LTD.

