

TEST REPORT

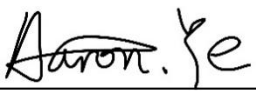
Product Name : 4 in 1 WIRELESS CHARGER
Brand Name : N/A
Model : HT33
Series Model : N/A
FCC ID : 2BR2SHNSHT33
Applicant : **Shenzhen Hinas Industrial Co.,Ltd**
Address : 401, Building 2, Longxin Factory, No. 6 Lingnan Road, opposite
Longxi Community, Longgang, Shenzhen
Manufacturer : **Shenzhen Hinas Industrial Co.,Ltd**
Address : 401, Building 2, Longxin Factory, No. 6 Lingnan Road, opposite
Longxi Community, Longgang, Shenzhen
Standard(s) : FCC CFR Title 47 Part 15 Subpart C
Date of Receipt : Sep. 04, 2025
Date of Test : Sep. 04, 2025~ Sep. 10, 2025
Issued Date : Sep. 11, 2025

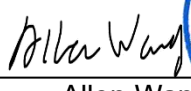
Issued By: **Guangdong Asia Hongke Test Technology Limited**

B1/F, Building 11, Junfeng Industrial Park, Chongqing Road, Heping Community, Fuhai Street,
Bao'an District, Shenzhen, Guangdong, China

Tel.: +86 0755-230967639

Fax.: +86 0755-230967639

Reviewed by: 
Aalen.Ye

Approved by: 
Allen Wang



Note: This device has been tested and found to comply with the standard(s) listed, this test report merely corresponds to the test sample. It is not permitted to copy extracts of these test result without the written permission of the test laboratory. This report shall not be reproduced except in full, without the written approval of Guangdong Asia Hongke Test Technology Limited. If there is a need to alter or revise this document, the right belongs to Guangdong Asia Hongke Test Technology Limited, and it should give a prior written notice of the revision document. This test report must not be used by the client to claim product endorsement.

Guangdong Asia Hongke Test Technology Limited

B1/F, Building 11, Junfeng Industrial Park, Chongqing Road, Heping Community, Fuhai Street, Bao'an District, Shenzhen, Guangdong, China.



Report Revise Record

Report Version	Issued Date	Notes
M1	Sep. 11, 2025	Initial Release

Contents

1	TEST SUMMARY	4
1.1	TEST STANDARDS	4
1.2	TEST SUMMARY	4
1.3	TEST FACILITY	5
1.4	MEASUREMENT UNCERTAINTY	5
2	GENGENERAL INFORMATION	6
2.1	ENVIRONMENTAL CONDITIONS	6
2.2	GENERAL DESCRIPTION OF EUT	6
2.3	DESCRIPTION OF THE TEST MODE	7
2.4	SPECIAL ACCESSORIES	7
2.5	EQUIPMENT LIST FOR THE TEST	8
3	TEST CONDITIONS AND RESULTS	9
3.1	CONDUCTED EMISSIONS TEST	9
3.2	RADIATED EMISSIONS.....	12
3.3	20dB BANDWIDTH.....	18
3.4	ANTENNA REQUIREMENT.....	20
4	TEST SETUP PHOTOGRAPHS OF EUT	21
5	PHOTOS OF THE EUT.....	22

1 TEST SUMMARY

1.1 Test Standards

The tests were performed according to following standards:

[FCC Rules Part 15.207,15.209, 15.215\(c\)](#)

[ANSI C63.10: 2013](#): American National Standard for Testing Unlicensed Wireless Devices

1.2 Test Summary

Test Item	Section in 47 CFR	Test Result
Electric Field Radiated Emissions	FCC Part 15 C (Section15.209)	PASS
20dB Bandwidth/99% Bandwidth	FCC Part 15 C (Section15.215(c))	PASS
AC Power Line Conducted Emission	FCC Part 15 C (Section15.207)	PASS
Antenna Requirement	FCC Part 15 C (Section15.203)	PASS

1.3 Test Facility

Test Laboratory:

Guangdong Asia Hongke Test Technology Limited

B1/F, Building 11, Junfeng Industrial Park, Chongqing Road, Heping Community, Fuhai Street, Bao'an District, Shenzhen, Guangdong, China

The test facility is recognized, certified or accredited by the following organizations:

FCC-Registration No.: 251906 Designation Number: CN1376

Guangdong Asia Hongke Test Technology Limited has been registered and fully described in a report filed with the (FCC) Federal Communications Commission. The acceptance letter from the FCC is maintained in our files.

IC —Registration No.: 31737 CAB identifier: CN0165

The 3m Semi-anechoic chamber of Guangdong Asia Hongke Test Technology Limited has been registered by Certification and Engineering Bureau of Industry Canada for radio equipment testing with Registration No.: 31737

A2LA-Lab Cert. No.: 7133.01

Guangdong Asia Hongke Test Technology Limited has been accredited by A2LA for technical competence in the field of electrical testing, and proved to be in compliance with ISO/IEC 17025: 2017 General Requirements for the Competence of Testing and Calibration Laboratories and any additional program requirements in the identified field of testing.

1.4 Measurement uncertainty

The data and results referenced in this document are true and accurate. The reader is cautioned that there may be errors within the calibration limits of the equipment and facilities. The measurement uncertainty was calculated for all measurements listed in this test report according to CISPR 16 - 4 "Specification for radio disturbance and immunity measuring apparatus and methods – Part 4: Uncertainty in EMC Measurements" and is documented in the Guangdong Asia Hongke Test Technology Limited's quality system according to DIN EN ISO/IEC 17025. Furthermore, component and process variability of devices similar to that tested may result in additional deviation. The manufacturer has the sole responsibility of continued compliance of the device.

Hereafter the best measurement capability for Asia Hongke laboratory is reported:

Test	Measurement Uncertainty	Notes
Power Line Conducted Emission	9KHz~30MHz ± 1.20 dB	(1)
Radiated Emission	9KHz~30MHz ± 3.10 dB	(1)
Radiated Emission	30MHz~1GHz ± 3.75 dB	(1)
Radiated Emission	1GHz~18GHz ± 3.88 dB	(1)
Radiated Emission	18GHz~40GHz ± 3.88 dB	(1)
RF power, conducted	30MHz~6GHz ± 0.16 dB	(1)
RF power density, conducted	± 0.24 dB	(1)
Spurious emissions, conducted	± 0.21 dB	(1)
Temperature	$\pm 1^{\circ}\text{C}$	(1)
Humidity	$\pm 3\%$	(1)
DC and low frequency voltages	$\pm 1.5\%$	(1)
Time	$\pm 2\%$	(1)
Duty cycle	$\pm 2\%$	(1)
Bandwidth	$\pm 1.5 \times 10^{-6}$	(1)

The report uncertainty of measurement $y \pm U$, where expanded uncertainty U is based on a standard uncertainty Multiplied by a coverage factor of $k=2$, providing a level of confidence of approximately 95%

2 GENERAL INFORMATION

2.1 Environmental conditions

During the measurement the environmental conditions were within the listed ranges:

Normal Temperature:	25°C
Relative Humidity:	55 %
Air Pressure:	101 kPa

2.2 General Description of EUT

Product Name:	4 in 1 WIRELESS CHARGER
Model/Type reference:	HT33
Power Supply:	Input: 9V/3A Output(Phone): 5W,7.5W,10W,15W Output(Earbuds)5.0W Output(watch):2.5W
Hardware Version:	N/A
Software Version:	N/A
Sample(s) Status:	AiTSZ-250904160-1(Normal sample) AiTSZ-250904160-2(Engineer sample)
Wireless Charger:	
Operation frequency:	Coil1: For Phone: 110KHz~205KHz Coil2: For Earphone: 110KHz~205KHz Coil3: For Watch: 300-350kHz
Modulation Technology:	ASK
Antenna Type:	Loop coil antenna
Antenna gain:	0dBi
Remark: The above DUT's information was declared by manufacturer. For more detailed features description, please refer to the manufacturer's specifications or the User's Manual.	

2.3 Description of the test mode

Equipment under test was operated during the measurement under the following conditions:

☒ Charging and communication mode

Test Modes:		
Mode 1	AC Adapter + EUT + Earphone + Watch + Phone (Battery Status: < 1%)	Record
Mode 2	AC Adapter + EUT + Earphone + Watch + Phone (Battery Status: < 50%)	Pre-tested
Mode 3	AC Adapter + EUT + Earphone + Watch + Phone (Battery Status: < 99%)	Pre-tested
Mode 4	AC Adapter + EUT + Earphone+ Phone (Battery Status: < 1%)	Pre-tested
Mode 5	AC Adapter + EUT + Earphone+ Phone (Battery Status: < 50%)	Pre-tested
Mode 6	AC Adapter + EUT + Earphone+ Phone (Battery Status: < 99%)	Pre-tested
Mode 7	AC Adapter + EUT + Watch + Phone (Battery Status: < 1%)	Pre-tested
Mode 8	AC Adapter + EUT + Watch + Phone (Battery Status: < 50%)	Pre-tested
Mode 9	AC Adapter + EUT + Watch + Phone (Battery Status: < 99%)	Pre-tested
Mode 11	AC Adapter + EUT + Earphone + Watch	Pre-tested
Mode 12	AC Adapter + EUT + Earphone	Pre-tested
Mode 13	AC Adapter + EUT + Watch	Pre-tested
Mode 14	AC Adapter + EUT+ Phone (Battery Status: < 1%)	Pre-tested
Mode 15	AC Adapter + EUT+ Phone (Battery Status: < 50%)	Pre-tested
Mode 16	AC Adapter + EUT+ Phone (Battery Status: < 99%)	Pre-tested
Mode 17	Stand-by mode.	Pre-tested
Note: All test modes were pre-tested, but we only recorded the worst case in this report.		

2.4 Special Accessories

Follow auxiliary equipment(s) test with EUT that provided by the manufacturer or laboratory is listed as follow:

Description	Manufacturer	Model	Serial No.	Provided by	Maximum charging power
Phone	Apple	IPhone 12	/	Test lab	15W
Watch	Apple	S6	/	Test lab	5W
Earphone	PocBuds	K6	/	Test lab	5W
Adapter	xiaomi	MDY-14-EU	A62502T103407S	Test lab	67W

2.5 Equipment List for the Test

Conducted Emission measurement						
Item	Test Equipment	Manufacturer	Model No.	Serial No.	Last Cal.	Cal.Due
<input checked="" type="checkbox"/> 1	EMI Test Receiver	R&S	ESPI	100771	2024.09.25	2025.09.24
<input checked="" type="checkbox"/> 2	LISN	R&S	NNLK 8129	8130179	2024.09.24	2025.09.23
<input checked="" type="checkbox"/> 3	ISN	TESEQ	T800	29429	2024.09.26	2025.09.25
<input checked="" type="checkbox"/> 4	Pulse Limiter	R&S	ESH3-Z2	102789	2024.09.24	2025.09.23
<input checked="" type="checkbox"/> 5	CE Software	EZ	EZ-EMC_CE	Ver.AIT-03A	N/A	N/A

Radiation Emission measurement						
Item	Test Equipment	Manufacturer	Model No.	Serial No.	Last Cal.	Cal.Due
<input checked="" type="checkbox"/> 1	EMI Measuring Receiver	R&S	ESR	101160	2024.09.25	2025.09.24
<input checked="" type="checkbox"/> 2	Low Noise Pre Amplifier	SCHWARZBECK	BBV 9745	00282	2024.09.25	2025.09.24
<input type="checkbox"/> 3	Low Noise Pre Amplifier	CESHENG	CSKJLNA231 016A	CSKJLNA23 1016A	2024.09.25	2025.09.24
<input type="checkbox"/> 4	Spectrum Analyzer	R&S	FSV40	101470	2024.09.23	2025.09.22
<input checked="" type="checkbox"/> 5	Passive Loop	ETS	6512	00165355	2024.08.29	2026.08.28
<input checked="" type="checkbox"/> 6	TRILOG Super Broadband test Antenna	SCHWARZBECK	VULB9168	01434	2024.08.29	2027.08.28
<input type="checkbox"/> 7	Broadband Horn Antenna	Schwarzbeck	BBHA 9120D	452	2024.08.29	2027.08.28
<input type="checkbox"/> 8	Horn Antenna 15-40GHz	SCHWARZBECK	BBHA9170	BBHA91703 67	2024.08.28	2027.08.27
<input checked="" type="checkbox"/> 9	6dB Attenuator	JFW	50FPE-006	4360846-949-1	2024.09.24	2025.09.23
<input checked="" type="checkbox"/> 10	RE Software	EZ	EZ-EMC_RE	Ver.AIT-03A	N/A	N/A

RF Conducted measurement						
Item	Test Equipment	Manufacturer	Model No.	Serial No.	Last Cal.	Cal.Due
<input checked="" type="checkbox"/> 1	Spectrum Analyzer	Agilent	N9020A	MY53421570	2024.09.25	2025.09.24
<input type="checkbox"/> 2	Power Sensor	Agilent	8481A	MY41097697	2024.09.25	2025.09.24
<input type="checkbox"/> 3	Vector Signal Generator	Agilent	N5182A	MY50143009	2024.09.25	2025.09.24
<input type="checkbox"/> 4	Analog signal generator	Agilent	E8257	MY51554256	2024.09.25	2025.09.24
<input type="checkbox"/> 5	Const Temp. & Humidity Chamber	Eastlab	YH-HW-408L	23051109	2024.09.24	2025.09.23
<input type="checkbox"/> 6	Wideband Radio communication tester	R&S	CMW500	1201.0002K50	2024.09.24	2025.09.23
<input checked="" type="checkbox"/> 7	DC power supply	ZHAOXIN	RXN-305D-2	28070002559	2024.09.24	2025.09.23
<input type="checkbox"/> 8	RF Test box	TST	TSTPASS	21033016	2024.09.25	2025.09.24
<input type="checkbox"/> 9	RF Software	TST	TSTPASS	Version 2.0	N/A	N/A
<input type="checkbox"/> 10	RF Software	Cesheng	WCN Regulary	Ver 25.03.2901	N/A	N/A

Note: ☐ is not applicable in this Test Report. ☒ is applicable in this Test Report.

3 TEST CONDITIONS AND RESULTS

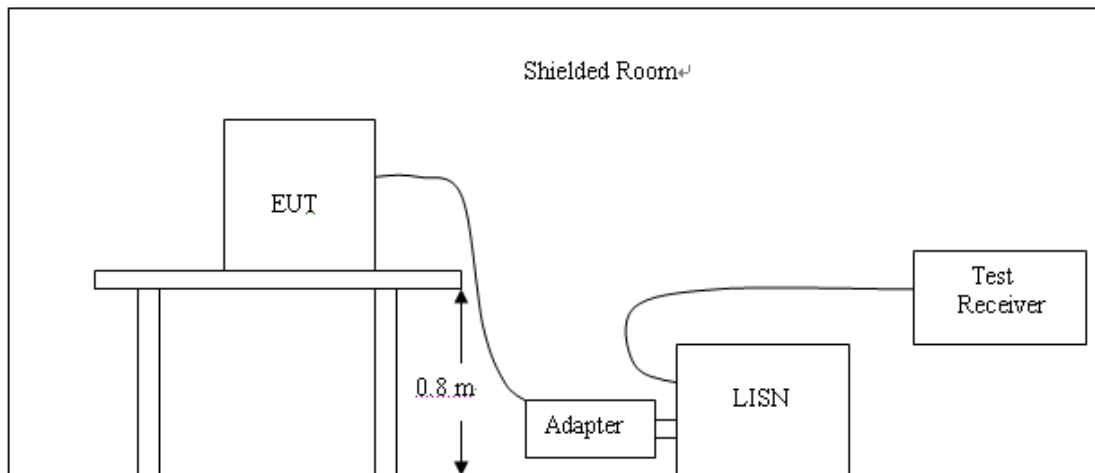
3.1 Conducted Emissions Test

LIMIT

Frequency range (MHz)	Limit (dBuV)	
	Quasi-peak	Average
0.15-0.5	66 to 56*	56 to 46*
0.5-5	56	46
5-30	60	50

* Decreases with the logarithm of the frequency.

TEST CONFIGURATION



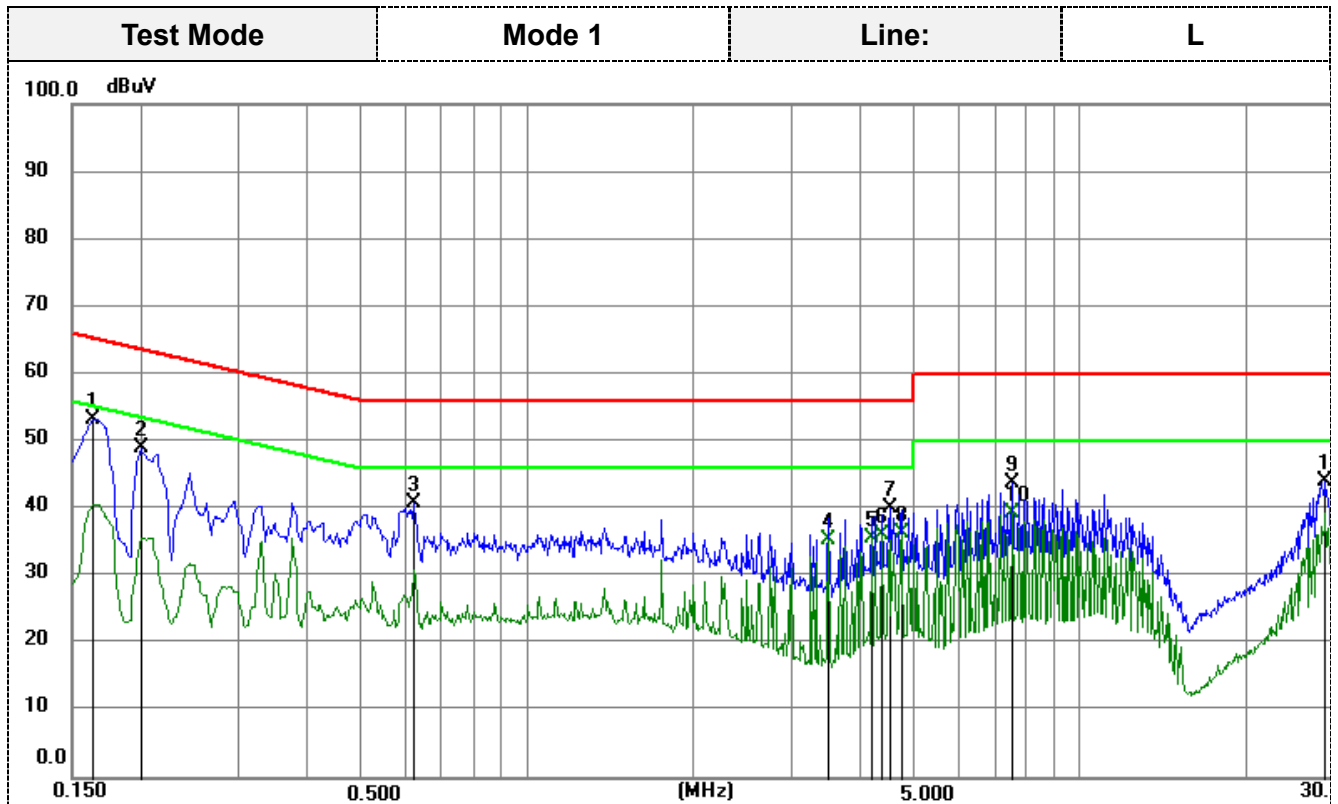
TEST PROCEDURE

1. The equipment was set up as per the test configuration to simulate typical actual usage per the user's manual. The EUT is a tabletop system; a wooden table with a height of 0.8 meters is used and is placed on the ground plane as per ANSI C63.10:2013.
2. Support equipment, if needed, was placed as per ANSI C63.10:2013.
3. All I/O cables were positioned to simulate typical actual usage as per ANSI C63.10:2013.
4. The adapter received AC120V/60Hz power through a Line Impedance Stabilization Network (LISN) which supplied power source and was grounded to the ground plane.
5. All support equipments received AC power from a second LISN, if any.
6. The EUT test program was started. Emissions were measured on each current carrying line of the EUT using a spectrum Analyzer / Receiver connected to the LISN powering the EUT. The LISN has two monitoring points: Line 1 (Hot Side) and Line 2 (Neutral Side). Two scans were taken: one with Line 1 connected to Analyzer / Receiver and Line 2 connected to a 50 ohm load; the second scan had Line 1 connected to a 50 ohm load and Line 2 connected to the Analyzer / Receiver.
7. Analyzer / Receiver scanned from 150 KHz to 30MHz for emissions in each of the test modes.
8. During the above scans, the emissions were maximized by cable manipulation.

TEST RESULTS

Remark:

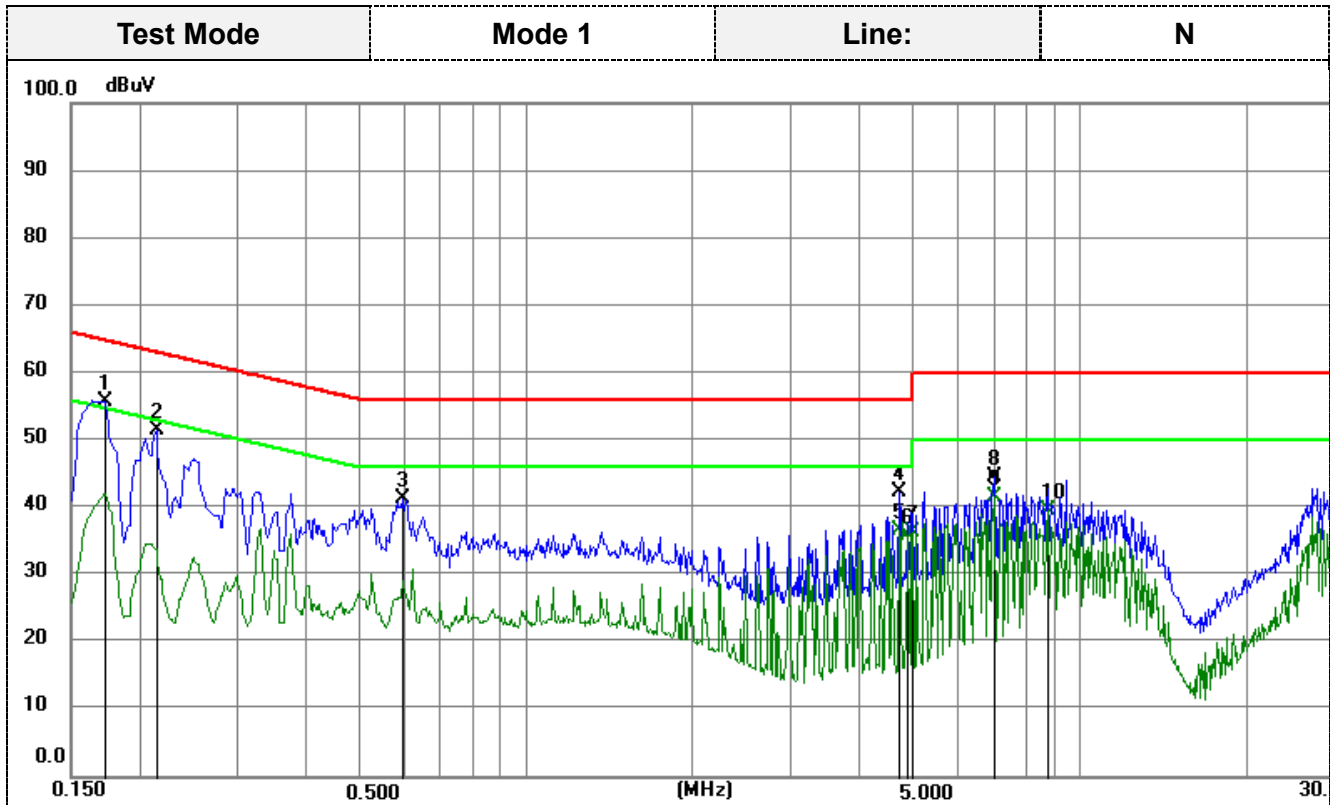
1. Both 120 VAC, 50/60 Hz and 240 VAC, 50/60 Hz power supply have been tested, only the worst result of 120 VAC, 60 Hz was reported as below:



Remark: Correct Factor = Insertion loss of LISN + Cable loss + Insertion loss of Pulse Limiter;
Measurement Result = Reading Level + Correct Factor;

Margin = Measurement Result- Limit

No.	Frequency (MHz)	Reading (dBuV)	Correct (dB)	Result (dBuV)	Limit (dBuV)	Margin (dB)	Remark
1	0.1635	42.61	10.67	53.28	65.28	-12.00	peak
2	0.1995	38.28	10.70	48.98	63.63	-14.65	peak
3	0.6225	30.13	10.69	40.82	56.00	-15.18	peak
4	3.4935	24.32	10.97	35.29	46.00	-10.71	AVG
5	4.1955	24.61	11.00	35.61	46.00	-10.39	AVG
6	4.3710	25.02	11.01	36.03	46.00	-9.97	AVG
7	4.5464	28.99	11.01	40.00	56.00	-16.00	peak
8	4.7445	25.21	11.02	36.23	46.00	-9.77	AVG
9	7.5164	32.80	11.05	43.85	60.00	-16.15	peak
10	7.5164	28.33	11.05	39.38	50.00	-10.62	AVG
11	27.6270	32.37	11.66	44.03	60.00	-15.97	peak
12	29.8950	29.34	11.75	41.09	50.00	-8.91	AVG



Remark: Correct Factor = Insertion loss of LISN + Cable loss + Insertion loss of Pulse Limiter;
Measurement Result = Reading Level + Correct Factor;

Margin = Measurement Result- Limit

No.	Frequency (MHz)	Reading (dBuV)	Correct (dB)	Result (dBuV)	Limit (dBuV)	Margin (dB)	Remark
1	0.1724	45.14	10.67	55.81	64.84	-9.03	peak
2	0.2130	40.72	10.69	51.41	63.09	-11.68	peak
3	0.5955	30.63	10.68	41.31	56.00	-14.69	peak
4	4.7130	31.28	11.01	42.29	56.00	-13.71	peak
5	4.7130	25.70	11.01	36.71	46.00	-9.29	AVG
6	4.8930	24.73	11.01	35.74	46.00	-10.26	AVG
7	4.9920	25.34	11.01	36.35	46.00	-9.65	AVG
8	6.9900	33.56	11.03	44.59	60.00	-15.41	peak
9	6.9900	30.55	11.03	41.58	50.00	-8.42	AVG
10	8.7360	28.61	11.05	39.66	50.00	-10.34	AVG
11	29.8455	32.65	11.62	44.27	60.00	-15.73	peak
12	29.8455	29.84	11.62	41.46	50.00	-8.54	AVG

3.2 Radiated Emissions

Limit

For intentional device, according to § 15.209(a), the general requirement of field strength of radiated emission out of authorized band shall not exceed the following table at a 3 meters measurement distance.

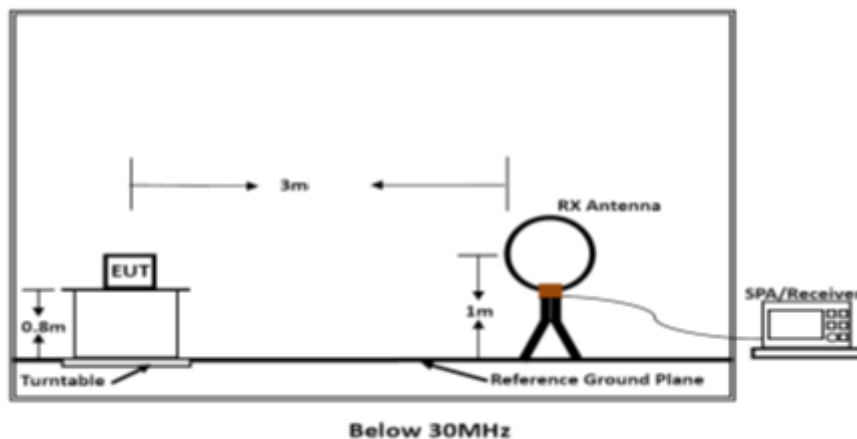
In addition, radiated emissions which fall in the restricted bands, as defined in §15.205(a), must also comply with the radiated emission limits specified in §15.209(a)

Radiated emission limits

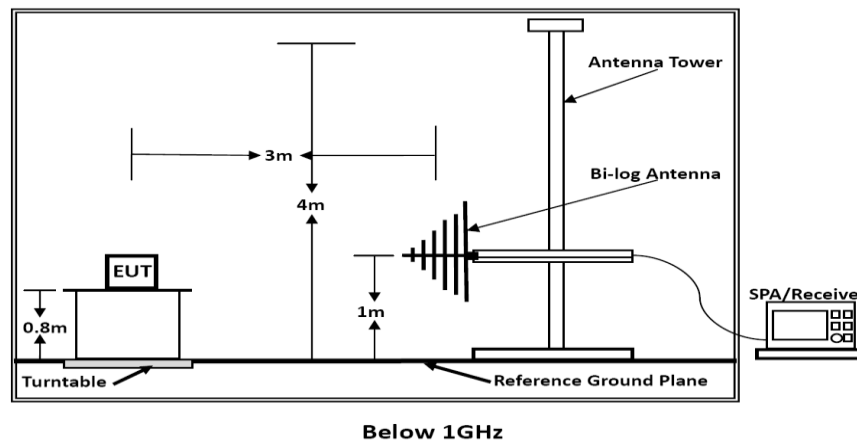
Frequency (MHz)	Distance (Meters)	Radiated (dBμV/m)	Radiated (μV/m)
0.009-0.49	3	$20\log(2400/F(\text{KHz}))+40\log(300/3)$	$2400/F(\text{KHz})$
0.49-1.705	3	$20\log(24000/F(\text{KHz}))+40\log(30/3)$	$24000/F(\text{KHz})$
1.705-30	3	$20\log(30)+40\log(30/3)$	30
30-88	3	40.0	100
88-216	3	43.5	150
216-960	3	46.0	200
Above 960	3	54.0	500

TEST CONFIGURATION

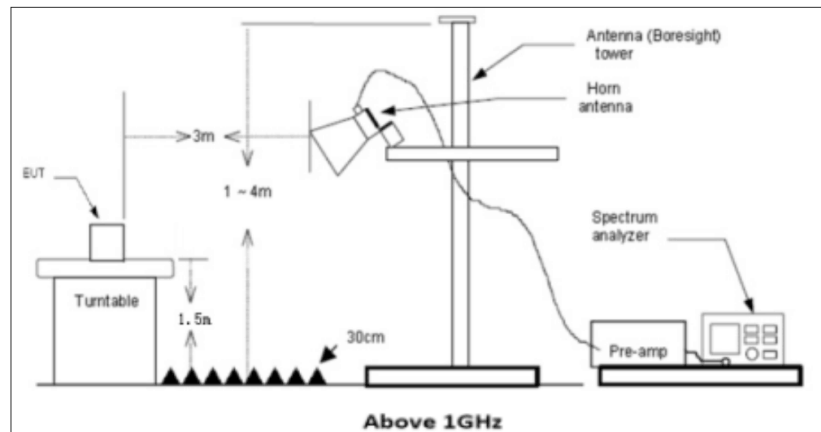
(A) Radiated Emission Test Set-Up, Frequency Below 30MHz



(B) Radiated Emission Test Set-Up, Frequency below 1000MHz



(C) Radiated Emission Test Set-Up, Frequency above 1000MHz



Test Procedure

- Below 1GHz measurement the EUT is placed on a turntable which is 0.8m above ground plane, and above 1GHz measurement EUT was placed on a low permittivity and low loss tangent turn table which is 1.5m above ground plane.
- Maximum procedure was performed by raising the receiving antenna from 1m to 4m and rotating the turn table from 0°C to 360°C to acquire the highest emissions from EUT
- And also, each emission was to be maximized by changing the polarization of receiving antenna both horizontal and vertical.
- Repeat above procedures until all frequency measurements have been completed.
- Radiated emission test frequency band from 9KHz to 1000MHz.
- The distance between test antenna and EUT as following table states:

Test Frequency range	Test Antenna Type	Test Distance
9KHz-30MHz	Active Loop Antenna	3
30MHz-1GHz	Bilog Antenna	3

- Setting test receiver/spectrum as following table states:

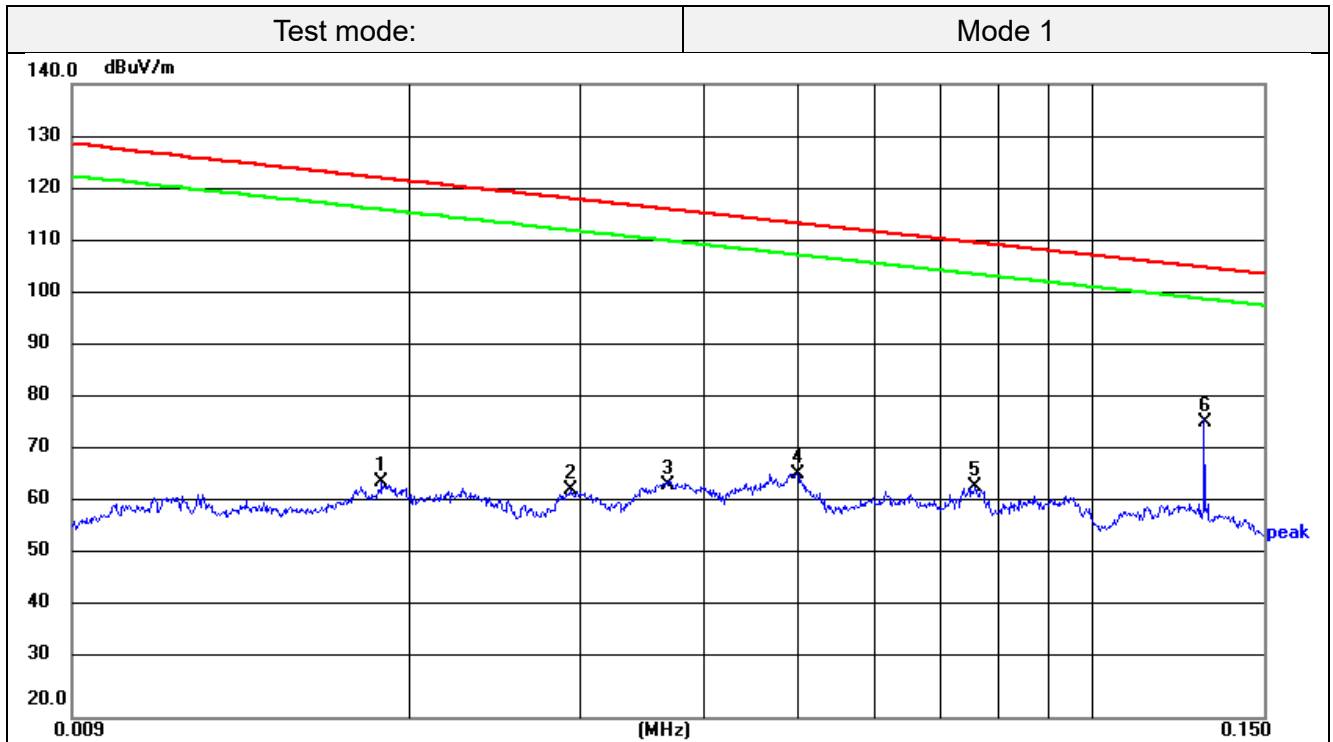
Test Frequency range	Test Receiver/Spectrum Setting	Detector
9KHz-150KHz	RBW=200Hz/VBW=3KHz, Sweep time=Auto	QP
150KHz-30MHz	RBW=9KHz/VBW=100KHz, Sweep time=Auto	QP
30MHz-1GHz	RBW=120KHz/VBW=1000KHz, Sweep time=Auto	QP

TEST RESULTS

Remark:

All test modes described in section 2.3 has been tested, only the worst result of Mode 1 and phone coil configured working on EPP mode is recorded as below:

For 9KHz-150KHz



Remark:

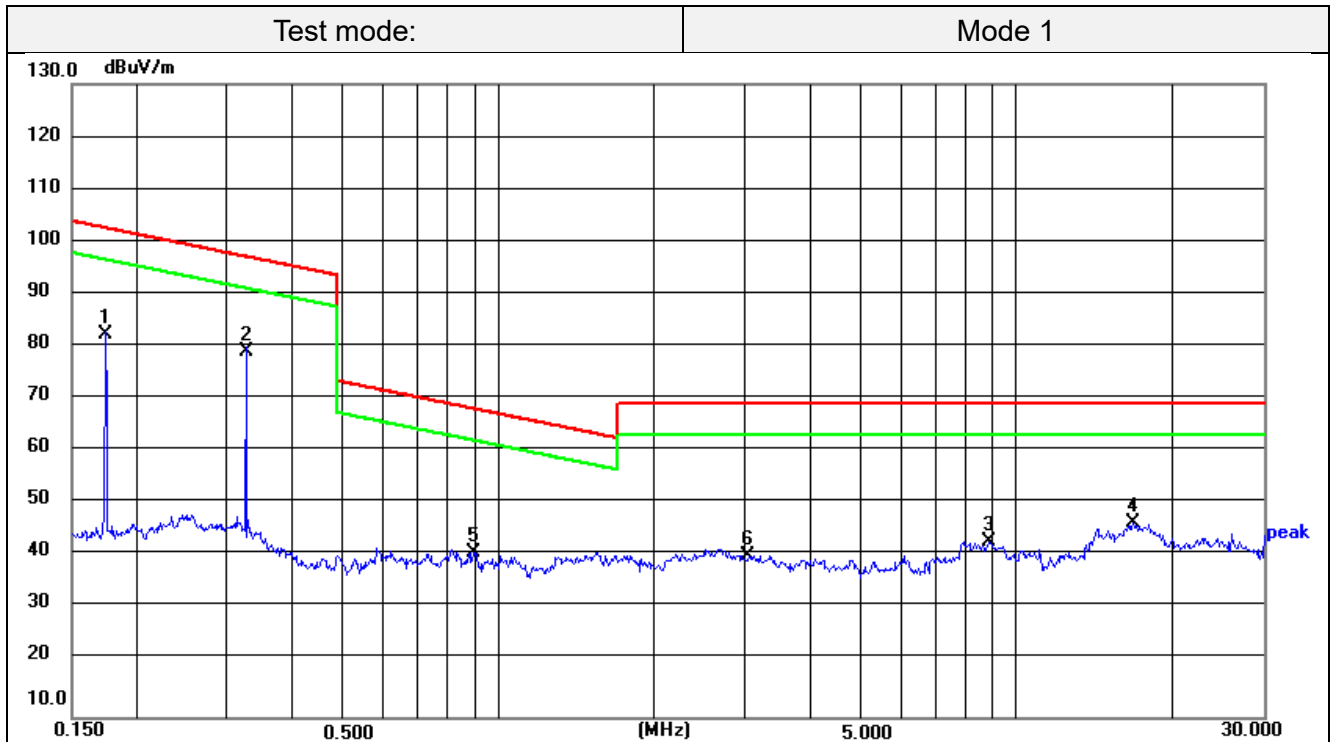
Emission Level = Reading + Factor;

Factor = Antenna Factor + Cable Loss;

Margin= Emission Level - Limit.

No.	Frequency (MHz)	Reading (dBuV)	Factor (dB/m)	Level (dBuV/m)	Limit (dBuV/m)	Margin (dB)	Det.
1	0.0187	43.89	20.88	64.77	122.17	-57.40	Peak
2	0.0291	41.87	21.35	63.22	118.33	-55.11	Peak
3	0.0367	42.32	21.80	64.12	116.31	-52.19	Peak
4	0.0500	43.68	22.60	66.28	113.62	-47.34	Peak
5	0.0760	40.98	22.69	63.67	109.99	-46.32	Peak
6	0.1305	53.91	22.09	76.00	105.29	-29.29	Peak

For 150KHz-30MHz

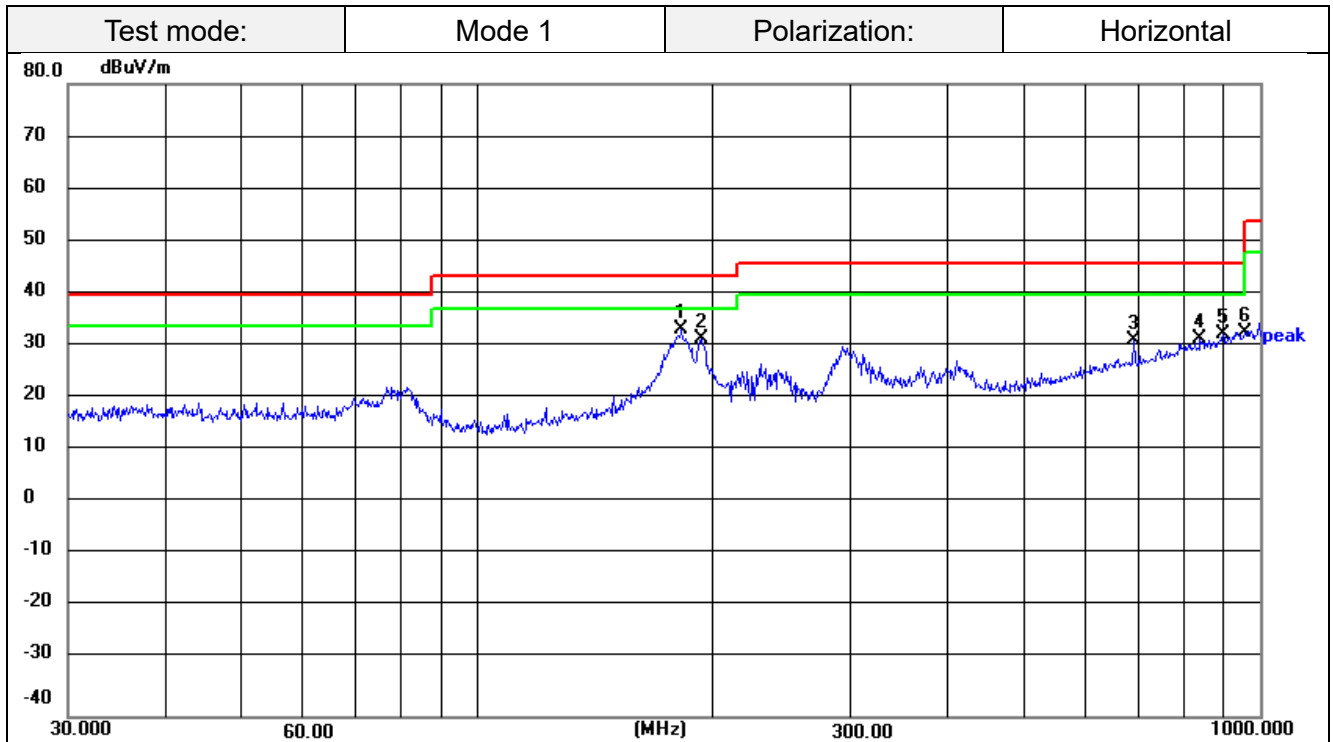


Remark:

Emission Level = Reading + Factor;
Factor = Antenna Factor + Cable Loss;
Margin= Emission Level - Limit.

No.	Frequency (MHz)	Reading (dBuV)	Factor (dB/m)	Level (dBuV/m)	Limit (dBuV/m)	Margin (dB)	Det.
1	0.1746	60.82	21.78	82.60	102.76	-20.16	Peak
2	0.3276	57.77	21.52	79.29	97.30	-18.01	Peak
3	8.8690	20.73	22.76	43.49	69.54	-26.05	Peak
4	16.7497	23.31	23.53	46.84	69.54	-22.70	Peak
5	0.8941	18.82	22.56	41.38	68.58	-27.20	Peak
6	3.0412	18.26	22.61	40.87	69.54	-28.67	Peak

For 30MHz-1GHz



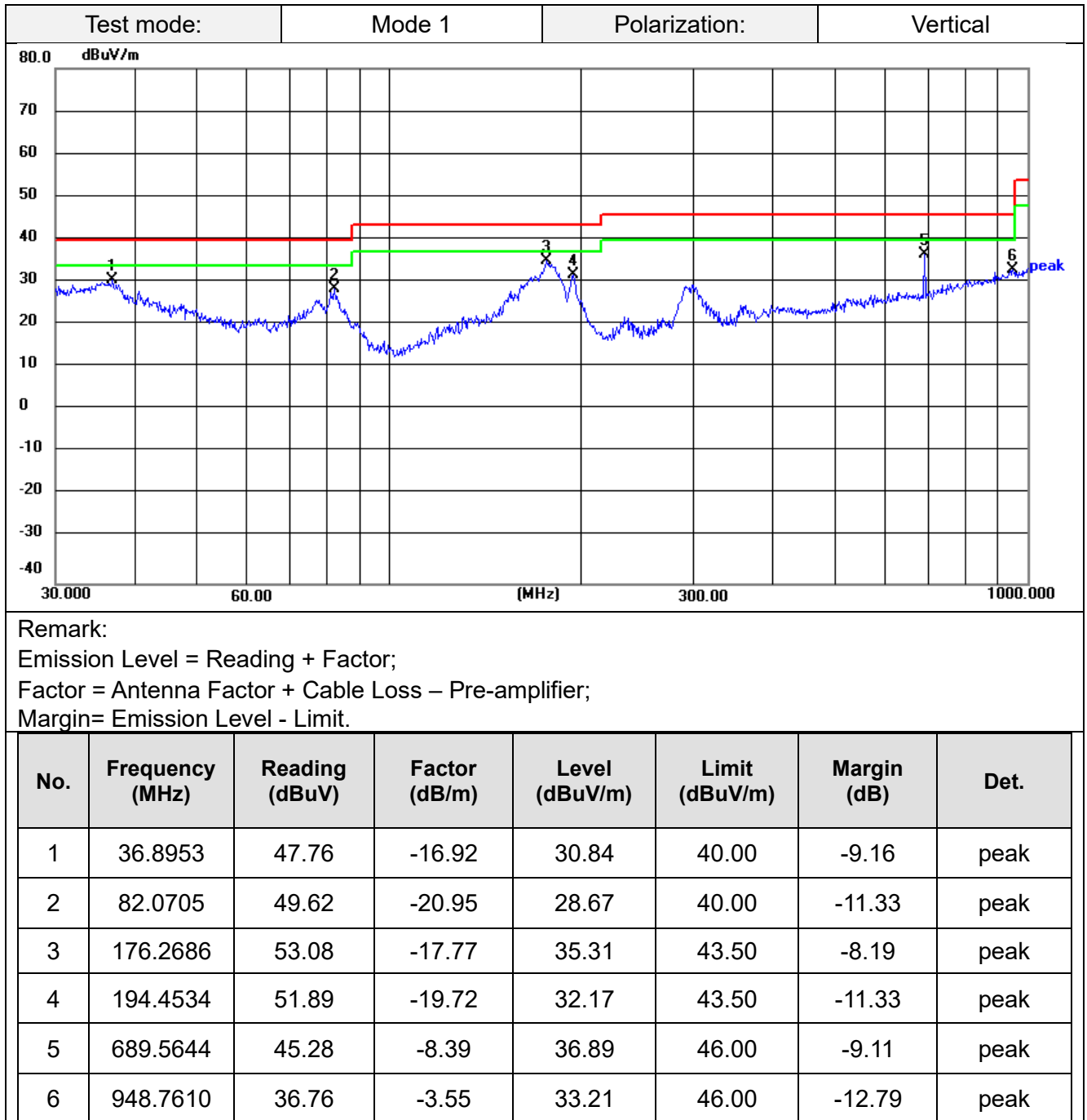
Remark:

Emission Level = Reading + Factor;

Factor = Antenna Factor + Cable Loss – Pre-amplifier;

Margin= Emission Level - Limit.

No.	Frequency (MHz)	Reading (dBuV)	Factor (dB/m)	Level (dBuV/m)	Limit (dBuV/m)	Margin (dB)	Det.
1	182.5592	52.12	-18.61	33.51	43.50	-9.99	peak
2	193.0945	51.26	-19.65	31.61	43.50	-11.89	peak
3	689.5644	39.85	-8.39	31.46	46.00	-14.54	peak
4	839.1818	37.21	-5.54	31.67	46.00	-14.33	peak
5	896.9965	37.50	-4.85	32.65	46.00	-13.35	peak
6	958.7943	36.54	-3.48	33.06	46.00	-12.94	peak



3.3 20dB Bandwidth

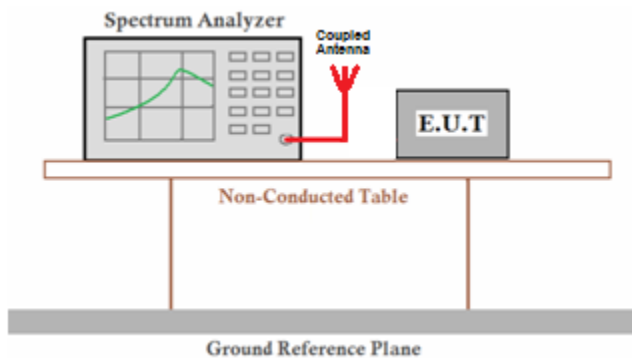
Limit

The 20dB bandwidth shall be less than 80% of the permitted frequency band.

Test Procedure

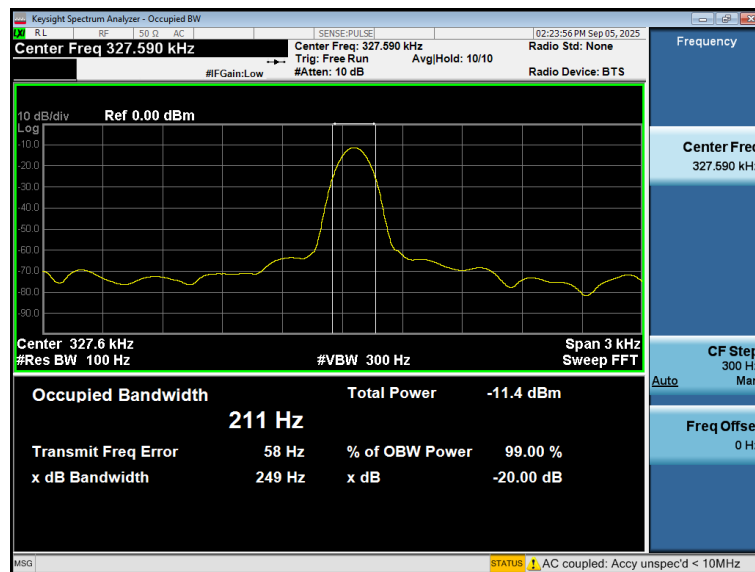
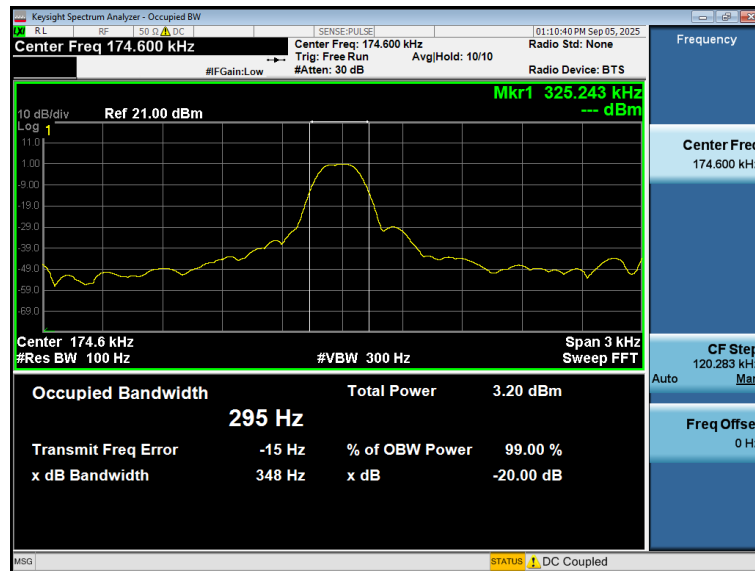
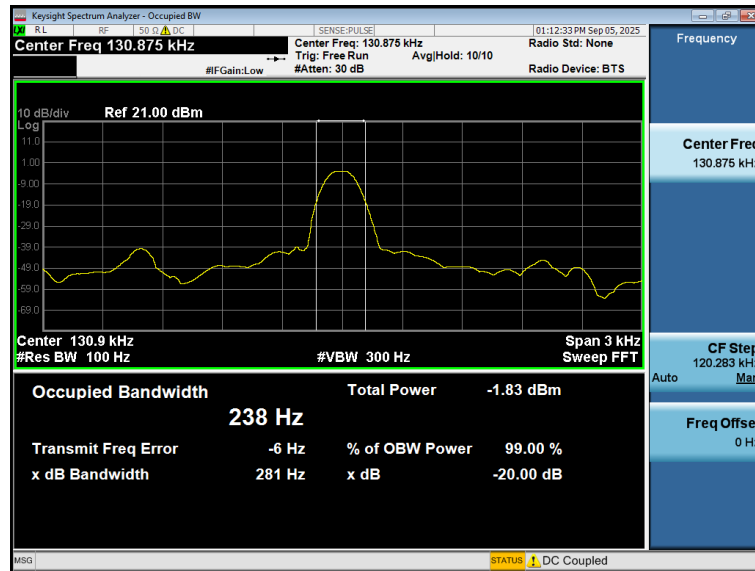
1. Set RBW = 1% to 5% of the OBW.
2. Set the video bandwidth (VBW) $\geq 3 \times$ RBW.
3. Detector = Peak.
4. Trace mode = max hold.
5. Sweep = auto couple.
6. Allow the trace to stabilize.
7. Measure the maximum width of the emission that is constrained by the frequencies associated with the two outermost amplitude points (upper and lower frequencies) that are attenuated by 20 dB relative to the maximum level measured in the fundamental emission.

Test setup



Test Results

Coil	Frequency (KHz)	20dB bandwidth (KHz)	99% bandwidth (KHz)	Result
Phone	130.875	0.281	0.238	Pass
Earphone	174.600	0.348	0.295	Pass
Watch	327.590	0.249	0.211	Pass



Note: Since the measured signal is CW-like, it is not practical to adjust the RBW according to C63.10, as the measured bandwidth will always follow the RBW, resulting in approximately twice the RBW.

3.4 Antenna Requirement

Standard Applicable

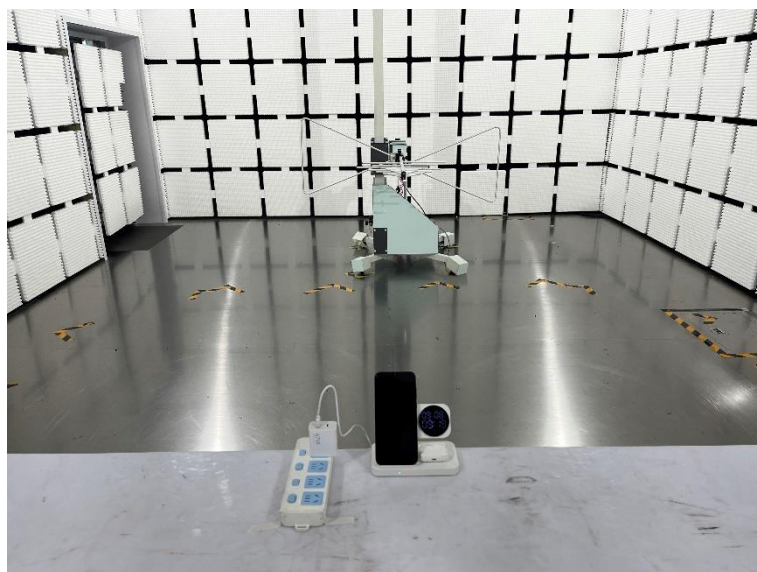
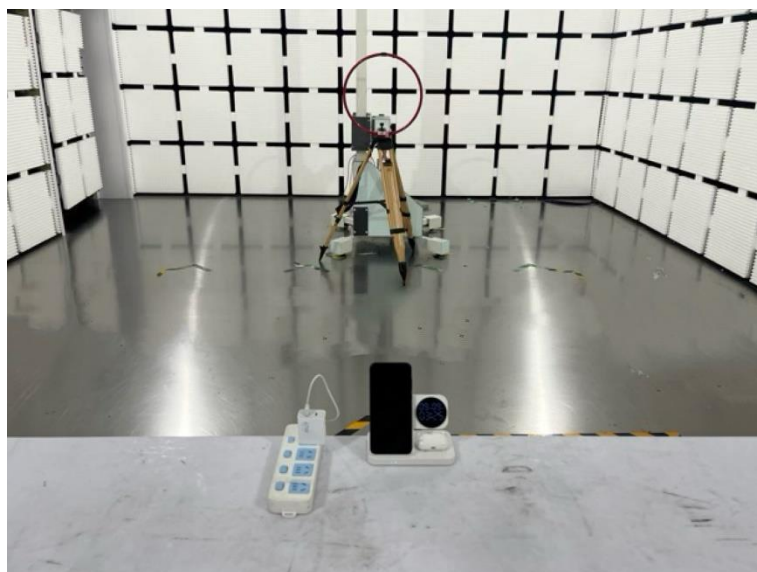
For intentional device, according to FCC 47 CFR Section 15.203:

An intentional radiator shall be designed to ensure that no antenna other than that furnished by the responsible party shall be used with the device. The use of a permanently attached antenna or of an antenna that uses a unique coupling to the intentional radiator, the manufacturer may design the unit so that a broken antenna can be replaced by the user, but the use of a standard antenna jack or electrical connector is prohibited

Confirmation

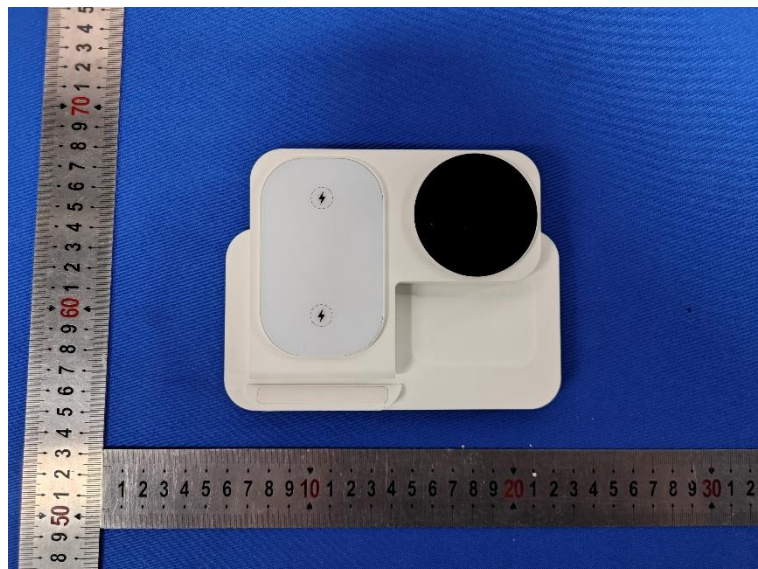
The EUT's antenna is an Inductive Loop coil Antenna, the best case gain of the antenna is 0dBi.

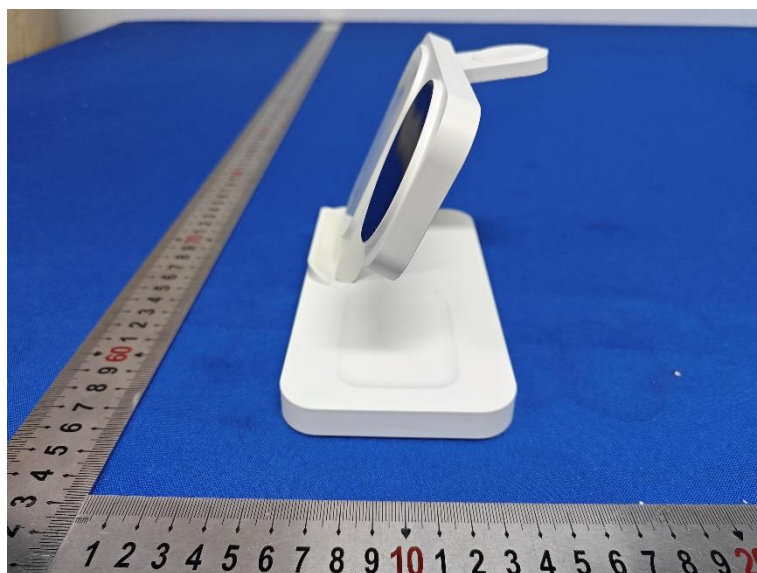
4 Test Setup Photographs of EUT

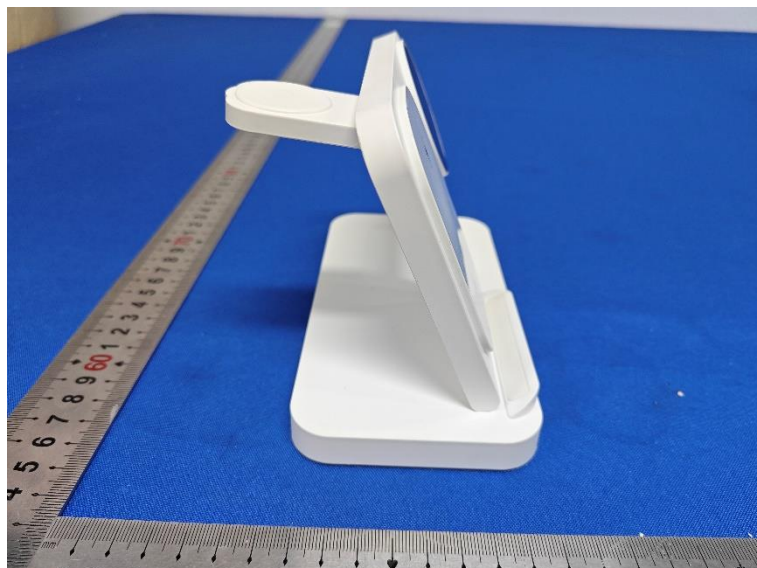


5 PHOTOS OF THE EUT

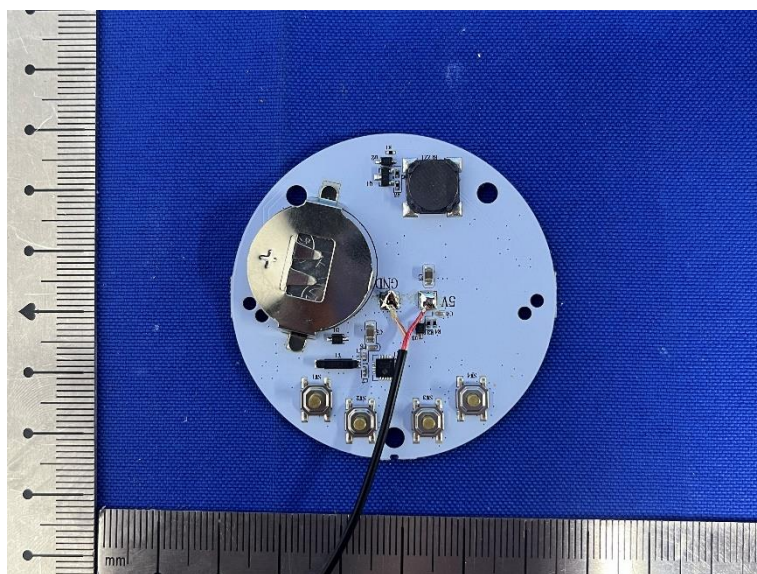
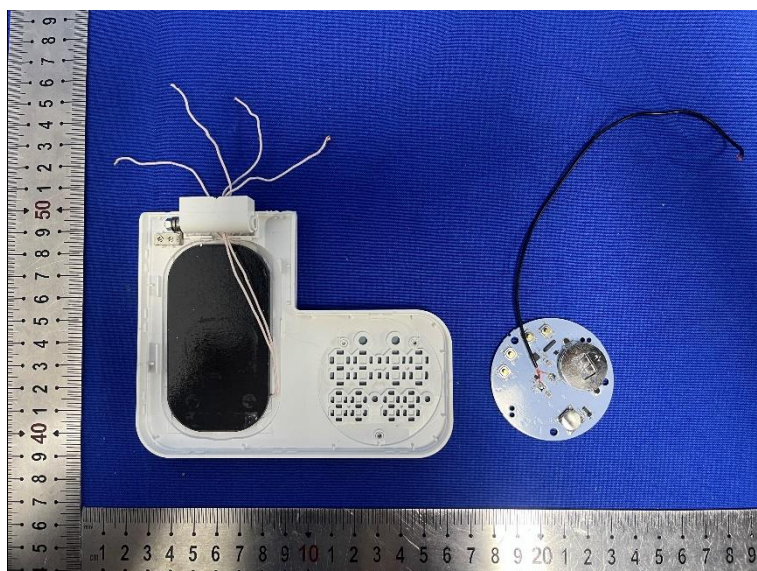
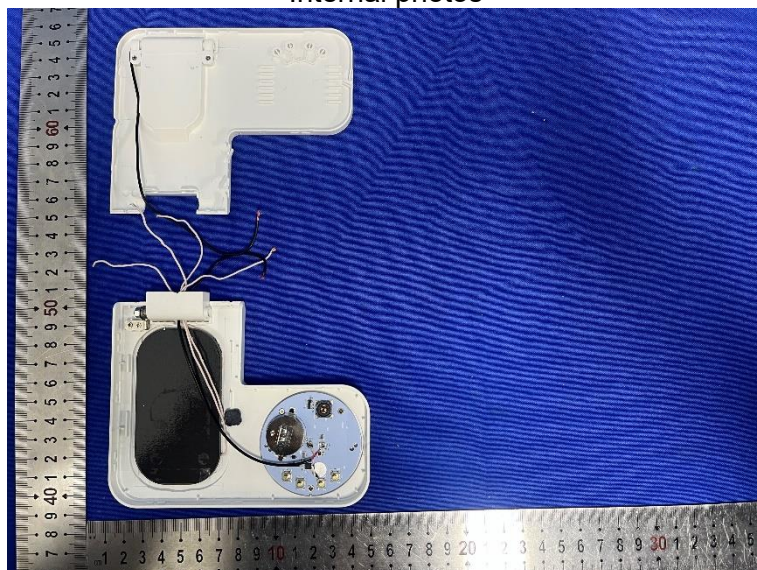
External photos

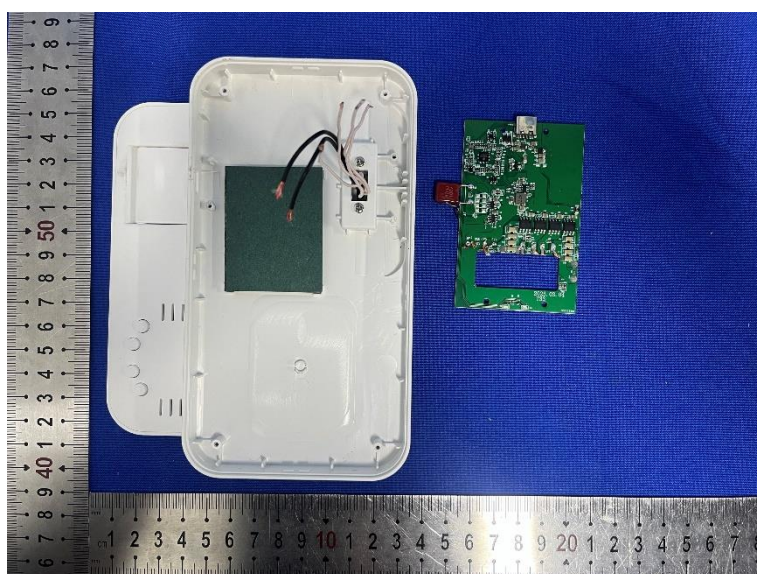
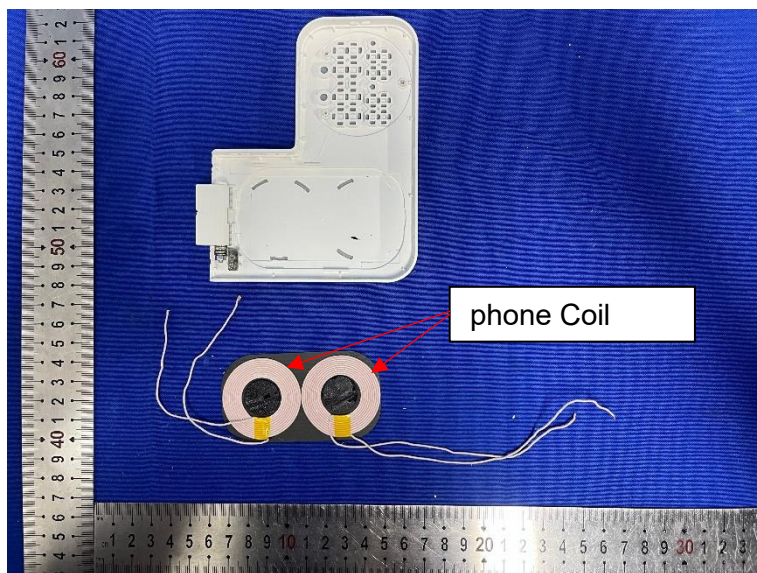
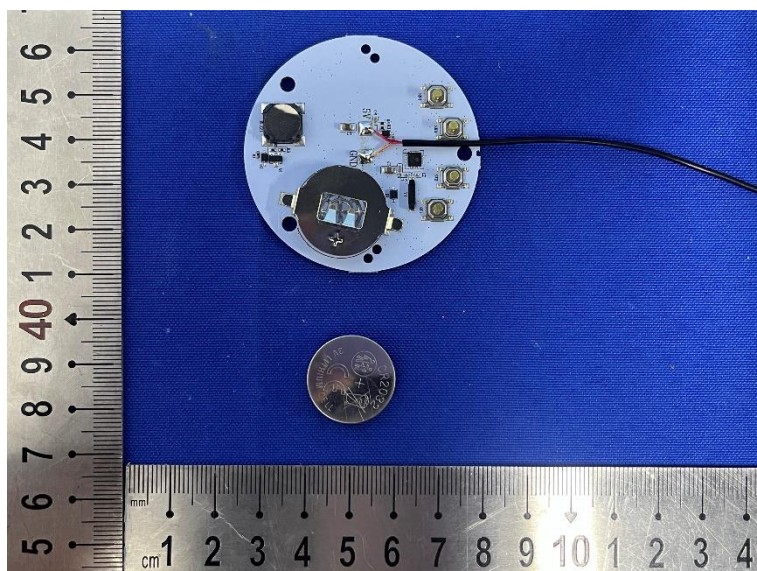


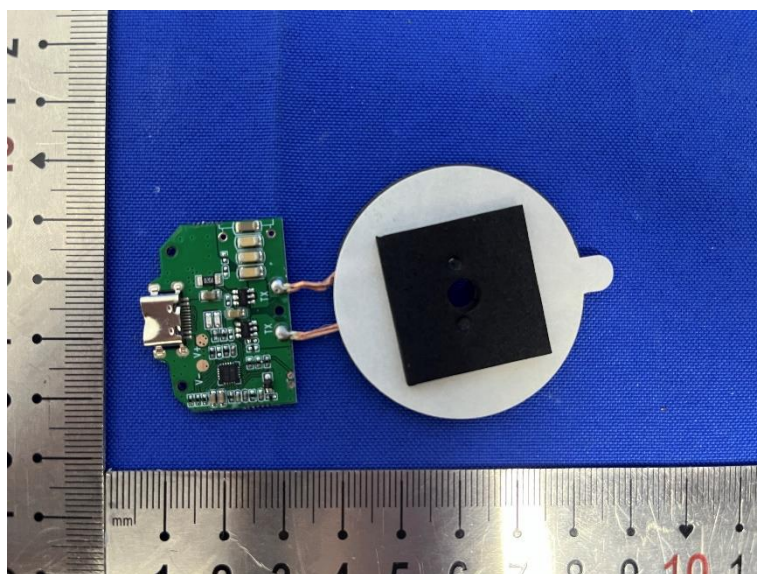
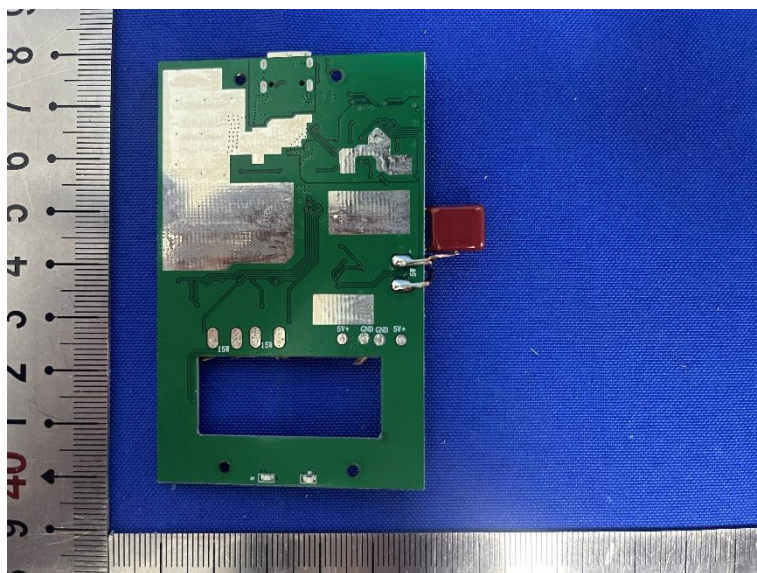
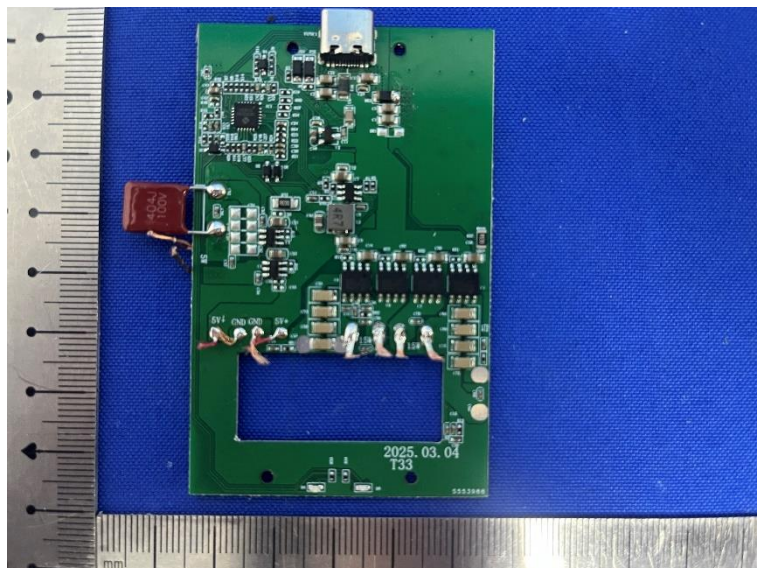


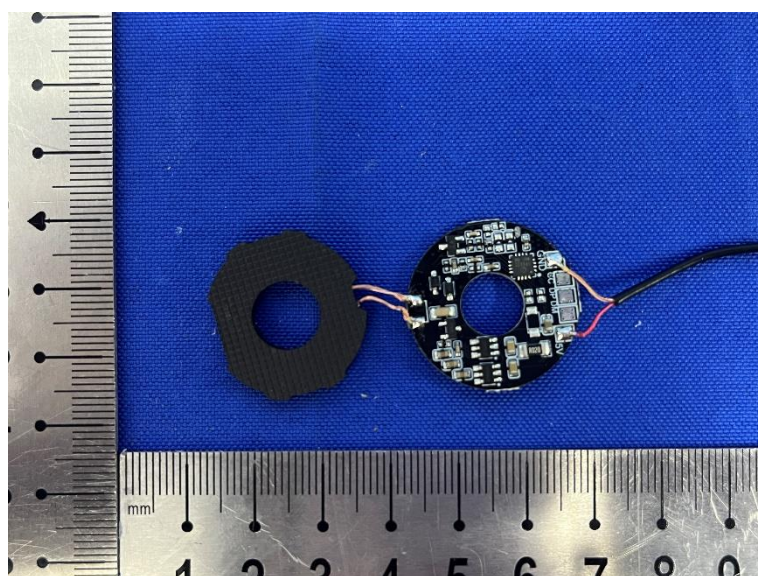
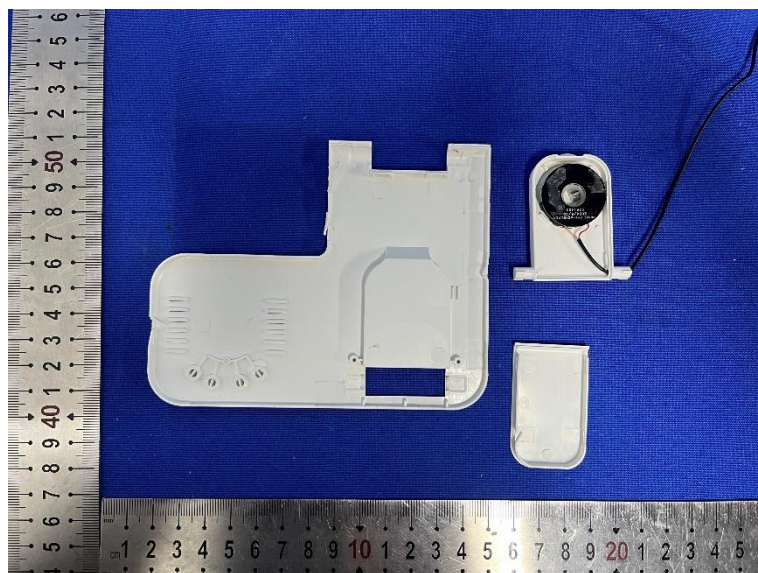
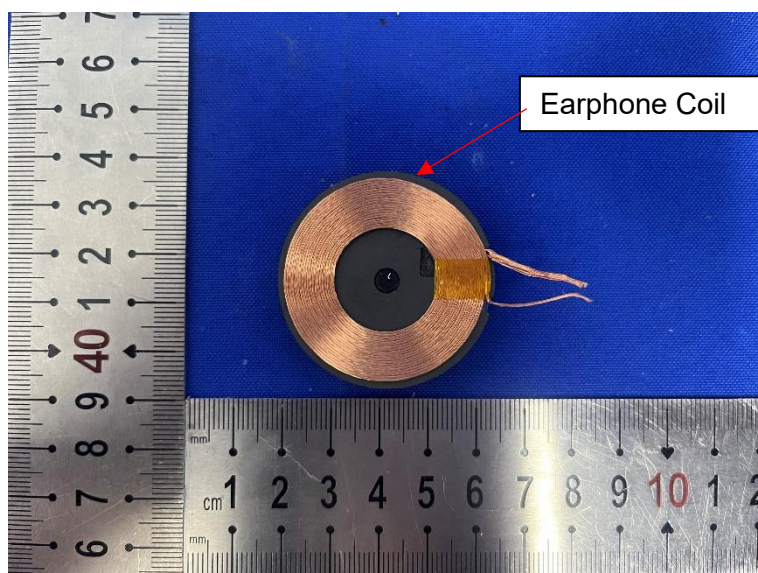


Internal photos

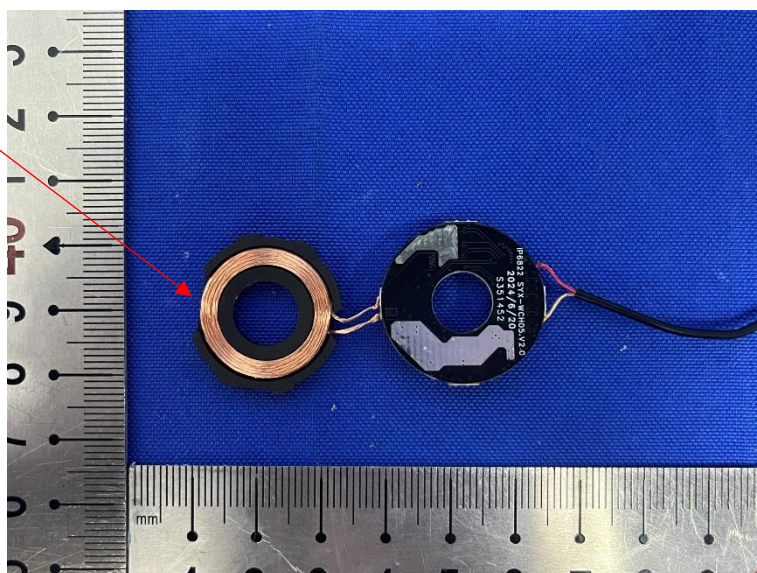








Watch Coil



***** End of Report *****