

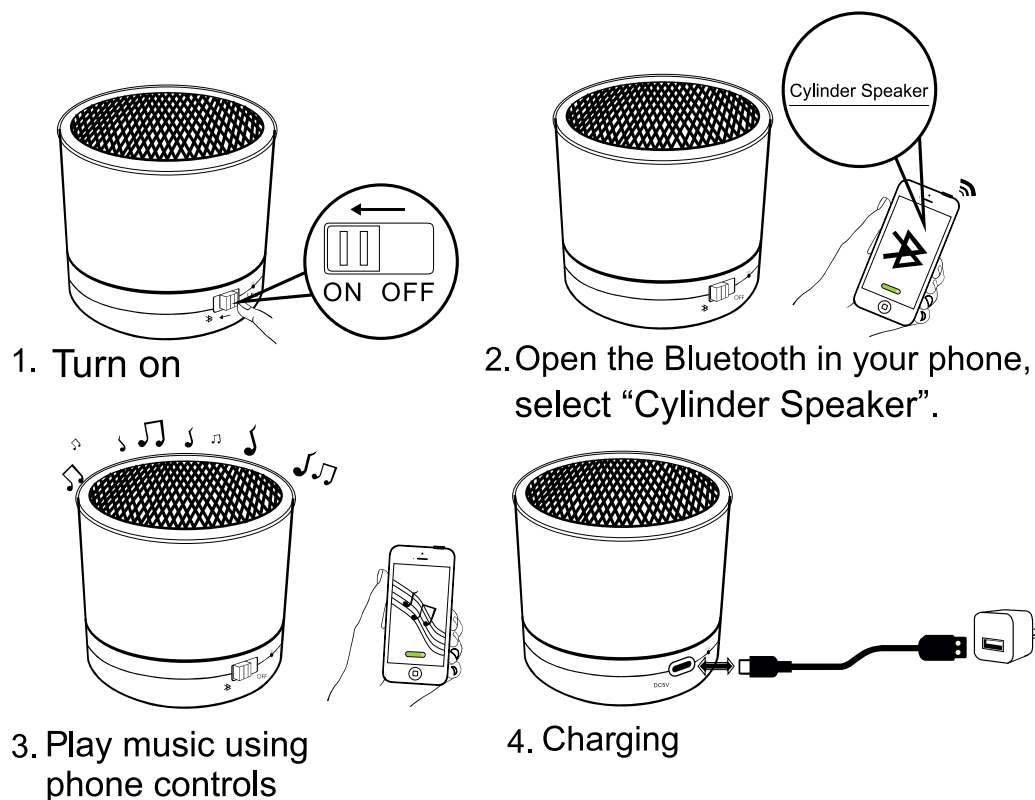
SM-2572

Cylinder Bluetooth® Speaker

Instruction Manual

Whats Included:

- 1 x Cylinder Bluetooth® Speaker
- 1 x Type-C Charging Cable



LED Indicator:

1. Charging: Glowing Red LED
2. Charging Complete: Red LED off

Tech Specifications:

1. Pairing Name: "Cylinder Speaker"
2. Battery capacity: 300mAh
3. Playback Time (at max vol): 1.5 hour
4. Charging Time: 1.5 hours

Instructions:

(Be sure to fully charge the speaker before using for the first time)

1. Charging the Speaker:

- Connect the provided Type-C charging cable to a power source and to the Type-C input port on the speaker.
- The LED indicator will glow RED when charging, and will turn OFF when fully charged.

2. Bluetooth® Setup:

- Turn ON the power switch
- Once on, the speaker will enter Bluetooth pairing mode.
- Using a Bluetooth enabled device, search for "Cylinder Speaker" from the list of available options.

3. Using the Speaker:

- Use the audio device to control track selection and volume
- Note: In order to charge device use only accessory cable (provided with

** device) or the cable included with your own device by the manufacturer.

Safety Precautions:

WARNING-When using this product, basic precautions should always be followed:

1. Read all the instructions before use.
 2. Charge the speaker completely before initial use for best practices.
 3. If the device does not respond once it is powered on, the battery capacity may be low.
 4. Do not over charge the internal battery.
 5. Do not immerse into water or expose it to moisture or weather conditions.
 6. Do not drop, knock, or shake. Rough handling can damage the internal precision component and its boards.
 7. Keep away from children, this device is not a toy.
 8. Keep away from fire or other sources of heat.
 9. Expose to high temperatures may cause it to explode.
 10. Do not short-circuit, as this may cause damage to the unit.
 11. Unauthorized change or modifications may void your right to use this product.
- While using, always comply with any special regulations that may apply to the area you are in and always turn off your mobile device when its use is prohibited.

FCC Statement:

This device complies with Part 15 of the FCC Rules. Operation is subject to the following two conditions:

1. This device may not cause harmful interference, and
2. This device must accept any interference received, including interference that may cause undesired operation.

Warning:

Changes or modifications not expressly approved by the party responsible for compliance could void the user's authority to operate the equipment.

Note:

This equipment has been tested and found to comply with the limits for a Class B digital device pursuant to part 15 of the FCC Rules. These limits are designed to provide reasonable protection against harmful interference in a residential installation.

This equipment generates uses and can radiate radio frequency energy and, if not installed and used in accordance with the instructions, may cause harmful interference to radio communications. However, there is no guarantee that interference will not occur in a particular installation. If this equipment does cause harmful interference to radio or television reception, which can be determined by turning the equipment the interference by one or more of the following measures:

- Reorient or relocate the receiving antenna.
- Increase the separation between the equipment and receiver.
- Connect the equipment into an outlet on a circuit different from that to which the receiver is connected.
- Consult the dealer or an experienced radio/TV technician for help.

FCC Radiation Exposure Statement:

The device has been evaluated to meet general RF exposure requirement. The device can be used in portable exposure condition without restriction.

ISED Statement:

- This device contains licence-exempt transmitter (s)/receiver(s) that comply with Innovation, Science and Economic Development Canada's licence-exempt RSS(s). Operation is subject to the following two conditions:
 1. (1) This device may not cause interference.
 2. (2) This device must accept any interference, including interference that may cause undesired operation of the device.
- L'émetteur/récepteur exempt de licence contenu dans le présent appareil est conforme aux CNR d'Innovation, Sciences et Développement économique Canada applicables aux appareils radio exempts de licence. L'exploitation est autorisée aux deux conditions suivantes :
1. (1) L'appareil ne doit pas produire de brouillage;
 2. (2) L'appareil doit accepter tout brouillage radioélectrique subi, même si le brouillage est susceptible d'en compromettre le fonctionnement.
- Radio Frequency Exposure Statement for ISED:
This equipment complies with ISED exposure limits set forth for an uncontrolled environment. This equipment can be used in portable exposure conditions.
Déclaration d'exposition aux radiofréquences pour ISED:
Cet équipement est conforme aux limites d'exposition ISED établies pour un environnement non contrôlé. Cet équipement peut être utilisé dans des conditions d'exposition portables.

Name of the Distributor:

Bulletline Inc

Address of the Distributor:

6301 East 10th Avenue, Suite 110

Hialeah, FL 33013 USA.

FCC ID:2BQZN-S10

IC: 32784-306369

Made in China