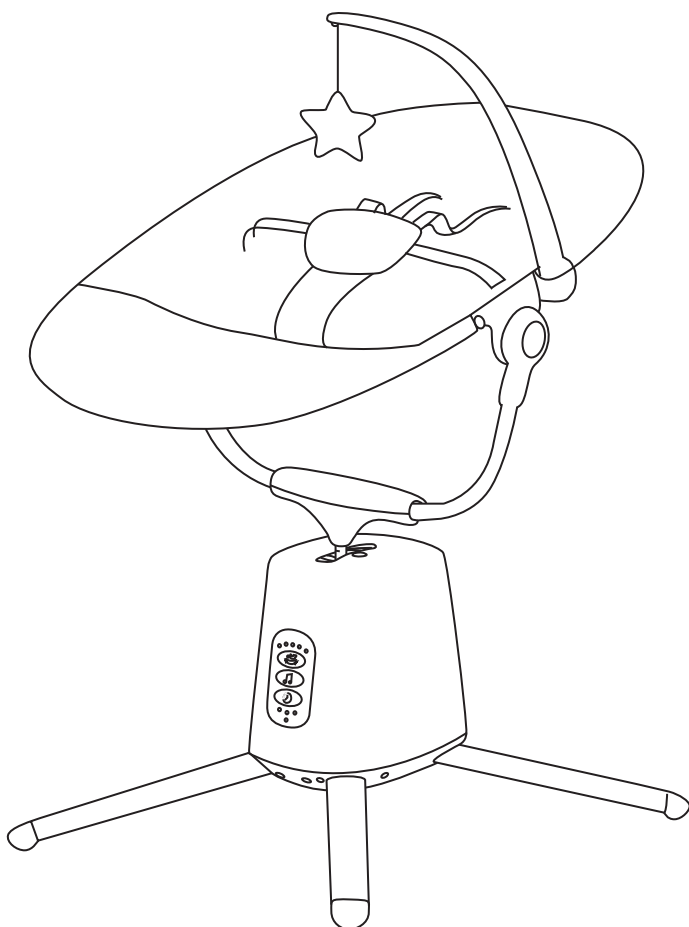


Zoicay

BABY SWING

MODEL: S3000

USER MANUAL



CONTENT

SAFETY INSTRUCTIONS	1-2
CLEAN & MAINTENANCE	3
PART NAME	3
INSTALLATION	4-6
USE	7-11
SPECIFICATIONS	12
FAULT RESOLUTION	13
WARRANTY CARD	14



Android system



iOS system

SAFETY INSTRUCTIONS

WARNING

- **Prevent Serious Injury or Death:** Failure to follow these warnings and assembly instructions may result in serious injury or death.
- Please read all instructions before using this product.
- Keep the user manual for future reference.
- This product requires adult assembly; please follow the assembly instructions carefully.

Risk of Strangulation:

- Never hang strings or attach strings to the product.
- Cords can cause strangulation accidents, so do not place items with cords around the child's neck, such as hood strings or pacifier cords.

If this product is damaged or broken, do not continue to use it:

- Never use it as a car seat.
- Do not place this product near water sources or in damp environments; avoid placing it in bathtubs, showers, sinks, swimming pools, or other potentially wet areas.
- Never use a power adapter that has been in contact with liquid, dropped, or damaged.
- Protect the power cord carefully to avoid stepping on it or having it pinched by furniture, and do not use it with an extension cord.
- Only use the recommended transformer; do not use other models.
- Regularly inspect this product; if parts need to be replaced, contact the retailer where it was purchased, and do not attempt to replace them yourself.

WARNING:

This product contains a button or coin cell battery.

A swallowed button or coin cell battery can cause internal chemical burns in as little hours and lead to death.

- Dispose of used batteries immediately.
- Keep new and batteries away from children.
- If you think batteries might have been swallowed or placed inside any part of the baby, seek immediate medical attention.



ALWAYS SECURE THE BABY IN THE PROVIDED SAFETY HARNESS.



DO NOT LEAVE THE BABY UNATTENDED IN THE SWING.

FALL and STRANGULATION HAZARDS: Children have suffered head injuries falling from swing and have strangled in straps.

- **ALWAYS** use restraints. Adjust to fit snugly.
- **NEVER** lift or carry baby in swing.
- **STOP** using swing when baby has reached 25 lbs.
- **STOP** using swing when infant attempts to climb out (approximately 9 months).
- The upright position is only for children who have developed enough upper body control to sit up without tipping forward.
- **ALWAYS** place swing on floor. Never use on any elevated surface.

Suffocation hazard: Babies have suffocated when seats tipped over on soft surfaces.

- **Never** use on a bed, sofa, cushion, or other soft surface.

Stay near and watch baby during use.

This product is not safe for sleep or unsupervised use.

If baby falls asleep, remove baby as soon as possible and place baby on a firm, flat sleep surface such as a crib or bassinet.

FALL and STRANGULATION HAZARDS: Infants have suffered head injuries falling from Swings and have strangled in straps.

- **ALWAYS** use restraints. Adjust to fit snugly.
- Stay near and watch baby during use. This product is not safe for sleep or unsupervised use. If baby falls asleep, remove baby as soon as possible and place baby on a firm, flat sleep surface such as a crib or bassinet.



CAUTION

To prevent battery leaks, which can burn skin and eyes:

- Always replace the entire set of batteries at one time.
- Never mix old and new batteries, or batteries of different brands or types
- Remove batteries when storing product for a long time.
- Dispose of used batteries immediately.

CLEAN & MAINTENANCE

CLEAN:

1. Clean the host, legs and seat frame with a damp cloth and mild detergent, then dry thoroughly. Do not use strong detergents.
2. Mattress component: Remove, add a little detergent, and wash gently by hand. Dry and avoid exposure to sunlight.

MAINTENANCE:

1. Please check this baby swing periodically. Make sure the parts are well connected and in place.
2. If connections are poor, discontinue use and reconnect/reinstall if necessary.
 - This product contains electronic components and should not be used in water or in a humid environment.
 - Please make sure the product is dry, store in a cool and dry place and avoid direct sunlight for a long time.

PART NAME



① Host



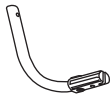
② Leg



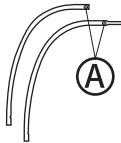
③ Left support bracket



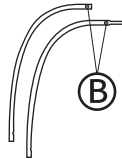
④ Right support bracket



⑤ Center support bracket



⑥ Seat frame A



⑦ Seat frame B



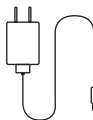
⑧ Toy bracket



⑨ Mattress component



⑩ Toy



⑪ Power adapter



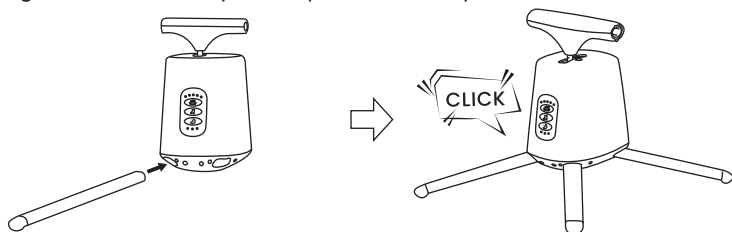
⑫ User manual

INSTALLATION

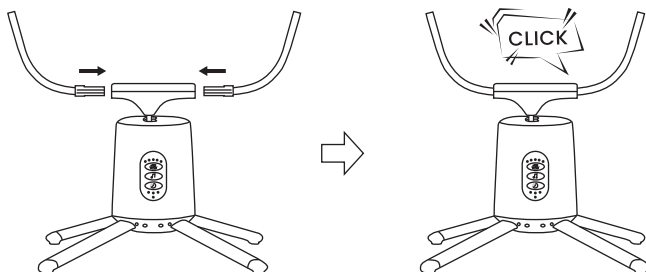
WARNING:

This product can only be installed by adults!

1. Insert the four "legs" into the corresponding holes at the bottom of the host in turn, making sure the "legs" are in the correct direction until you hear a "click" sound, indicating that the assembly is complete and firmly fixed.

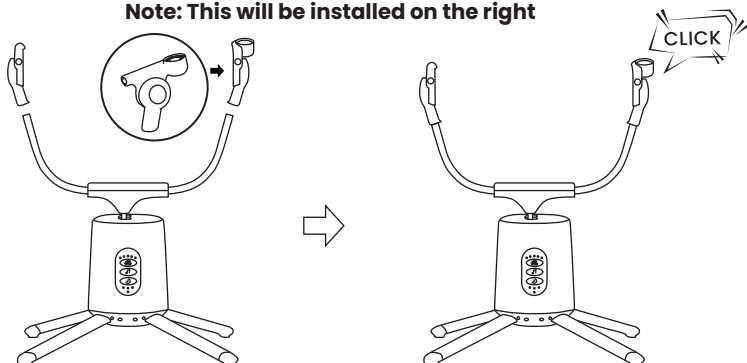


2. Insert the two "center support brackets" into the holes on both sides of the host rocker in turn until you hear a "click" sound, indicating that the assembly is complete and firmly fixed.



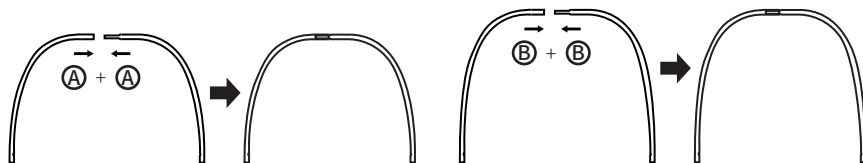
3. Insert the "left support bracket" and "right support bracket" into the corresponding holes of the "center support bracket" respectively, until you hear a "click" sound, indicating that the assembly is complete and firmly fixed.

Note: This will be installed on the right

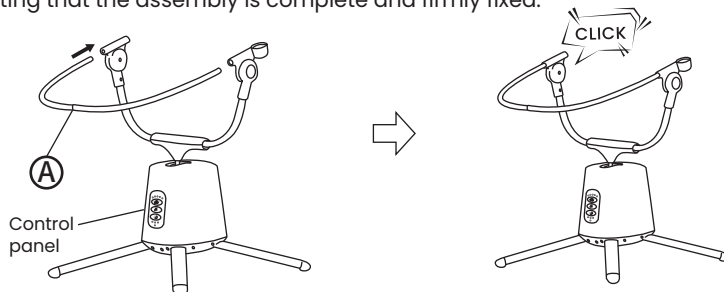


4. Seat frame installation:

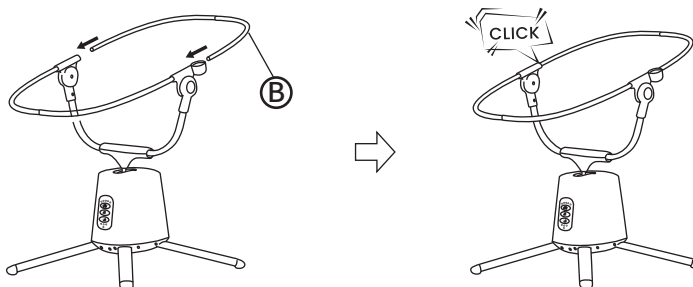
- a. Assemble "Seat frame A" and "Seat frame B" separately.
(as shown in the figure).



- b. Insert the assembled seat frame into the corresponding holes
(A in the front, B in the back, as shown in the figure) until you hear a "click",
indicating that the assembly is complete and firmly fixed.

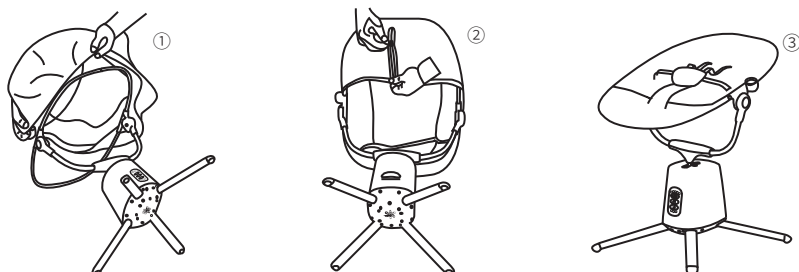


- c. Follow the same steps to complete the installation on the other side.



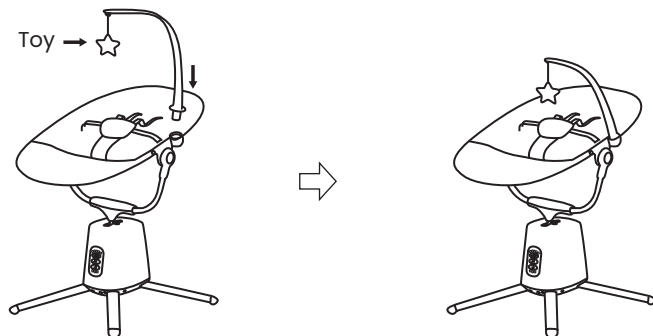
5. Install the mattress component assembly:

Take out the mattress component and unfold it. Use both hands to flip open the cloth cover on the bottom of the mattress component and put it into the seat frame tube (as shown in Figure 1 below). Open the edge cloth on the bottom of the mattress component and put it into the seat frame tube and zip it up with both hands (as shown in Figure 2 below). The mattress should be installed as shown in Figure 3 below.

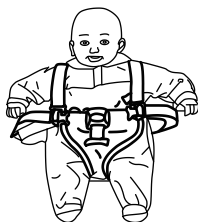


6. Install the toy bracket:

Insert the toy bracket into the toy bracket hole, as shown in the figure below.



7. Installation and use of seat belts:



1. Place the baby in the seat;



2. Tighten the five point safety buckle;



3. Cover the safety buckle with protective cloth.

SPECIAL ATTENTION:

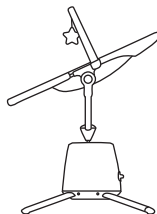
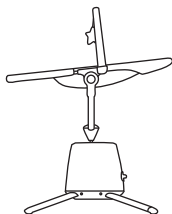
In order to prevent the seat belt from being accidentally opened by the baby, according to US law, we have designed the buckle to be very tight. Please open it with both hands according to the diagram.

The length of the seat belt can be adjusted by pressing the buttons on the shoulders and waist to ensure that the baby sits comfortably and safely.

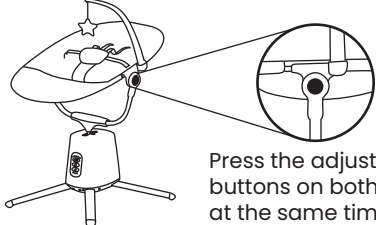
USE

1. Seat adjustment

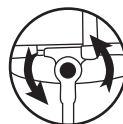
The seat has Tow angle adjustment: as shown below



Operation method:



Press the adjustment buttons on both sides at the same time



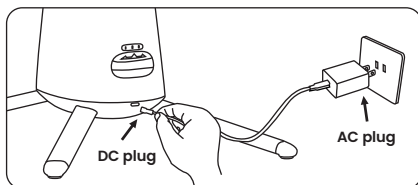
Adjust up or down

2. Power supply

Support 2 power sources

a. Adapter power supply

Use the included DC power adapter". Plug the power plug of the adapter into the socket and the machine respectively. (Adapter input voltage 100~240V/50/60Hz, 0.5A, output voltage 5V 2.0A 10.0W)"



! WARNING:

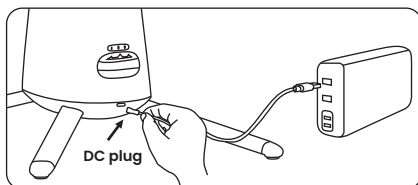
- DO NOT USE AN ADAPTER OTHER THAN THE ONE SUPPLIED WITH THE PRODUCT!
- WHEN USING THE ADAPTER, BE SURE TO KEEP IT OUT OF THE REACH OF CHILDREN.

b. Power bank supply

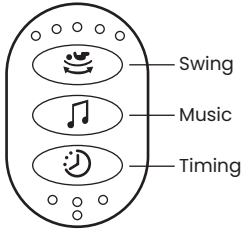
Plug the power plug of the adapter into the socket and the power bank respectively.

Precautions for Using Mobile Power Banks:

1. Charging Indicator: Ensure the power bank is sufficiently charged and pay attention to the charging indicator light status.
2. Safe Use: Avoid using the power bank in high-temperature, humid, or flammable environments.
3. Regular Charging: If not in use for an extended period, recharge the power bank regularly.



3. Control panel use and introduction



Swing



Music



Timing

Press the "swing button" to start swinging. Each press increases the swing level from 0 (stop) to 5 (maximum), and so on.

Press the "music button" to play music (12 songs), press it again to pause the music, press it again to play the next song, press it again to pause, and so on. Long press the "music button" to adjust the volume, and release it after confirming the volume."



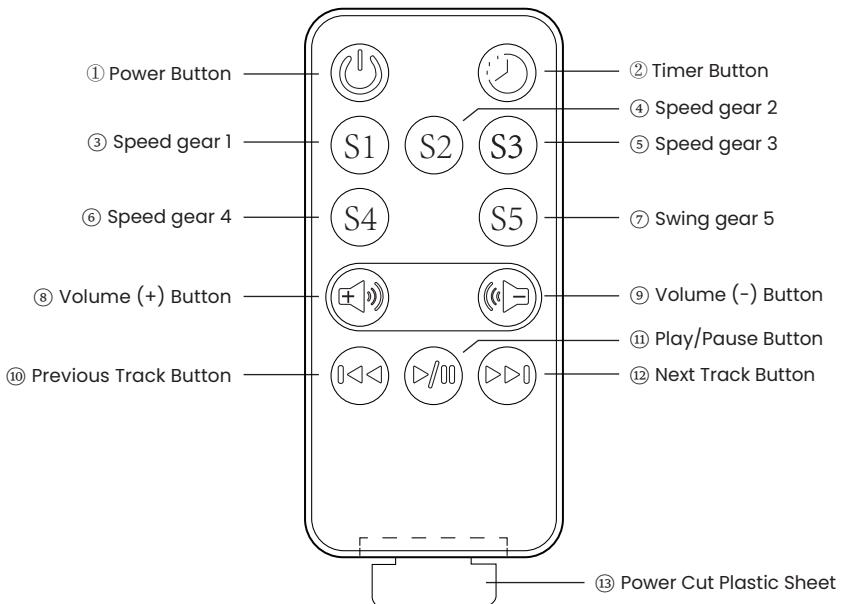
There are 3 timing options. Press once and one indicator light will light up for 8 minutes, press the second time and two indicators will light up for 15 minutes, press the third time and three indicators will light up for 30 minutes. When the timing time is up, all functions will stop. If the timing function is not activated, the machine will work indefinitely until the battery is exhausted;

! WARNING:

After disconnecting the power supply/turning off the machine, the baby swing will stop swinging after 3-5 seconds. This is a normal machine reset. Please feel free to use it.

4. Remote Control Instructions

Before using the remote control, please remove the "power cut plastic sheet" to ensure the normal operation of the remote control.



5. Mobile phone remote control description

Download and install

Please select the corresponding QR code according to your phone's operating system to scan and download. The specific steps are as follows:

- Identify the system: first confirm whether your phone's operating system is Android or iOS.

- Scan the QR code:

If your phone is Android , please scan the QR code labeled "Android".

If your phone is iOS, please scan the QR code labeled "iOS".

- Download and install: After scanning the code, click the link to download and install the remote control.

- Using the remote control:

After the installation is completed, you can use the mobile remote control to operate.



Android system



iOS system

Bluetooth connection

a. Turn on your phone's Bluetooth

- Click "Settings" on your phone, find the "Bluetooth" option and make sure the Bluetooth switch is turned on.

- Make sure your phone is discoverable so other devices can find it.

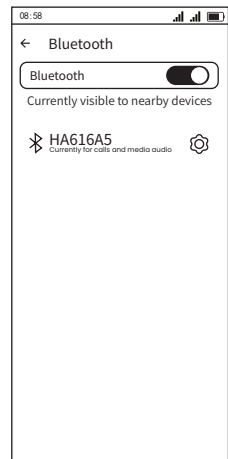
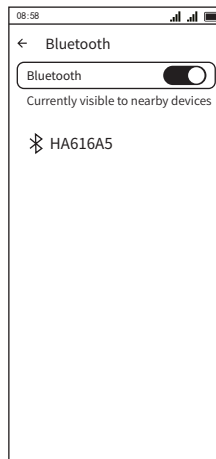
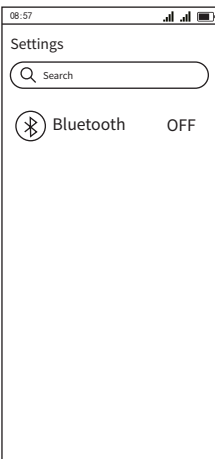
b. Search for devices:

- Wait for the app to search for nearby Bluetooth devices. In the search results, look for the Bluetooth device named "HA616" (this is the Bluetooth name of S3000).

c. Connect the device:

- Click "HA616" to pair and connect.

After the connection is successful, open the music player you often use on your phone and select the music or white noise that you and your baby like.



CAUTION

- Make sure the working condition and not connected to other devices before connecting to your phone's remote control app.
- If the connection fails, try restarting your phone's Bluetooth or remote control app and retry the connection steps.

Bluetooth connection(Link to the mobile APP –Baby Rocker)

Follow the steps below to connect the remote control app on your phone to the baby Highchair via Bluetooth:

a. Turn on your phone's Bluetooth

- Click "Settings" on your phone, find the "Bluetooth" option and make sure the Bluetooth switch is turned on.
- Make sure your phone is discoverable so other devices can find it.

b. Open the remote control app on your phone

- Launch the remote control app you downloaded for your phone.

c. Get to the Bluetooth Search screen

- On the Phone Remote app screen, find and tap on the "Bluetooth Location" option. This will take you to the Bluetooth search screen.

d. Search for devices:

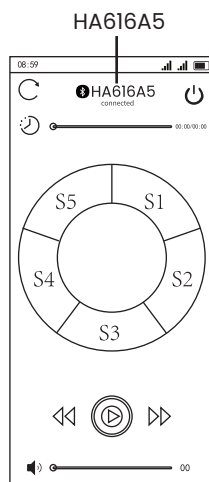
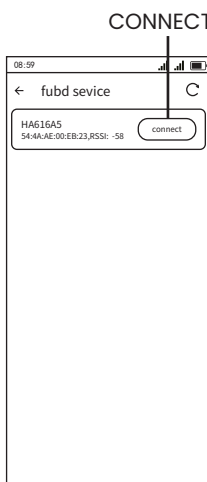
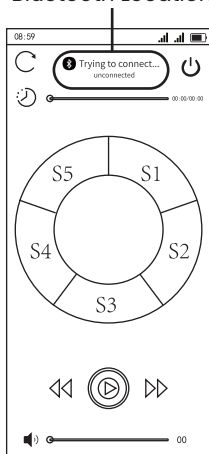
- Wait for the app to search for nearby Bluetooth devices. In the search results, look for the Bluetooth device named "HA616A5" (this is the Bluetooth name of S3000).

e. Connect the device:

- Click "HA616A5" to pair and connect.

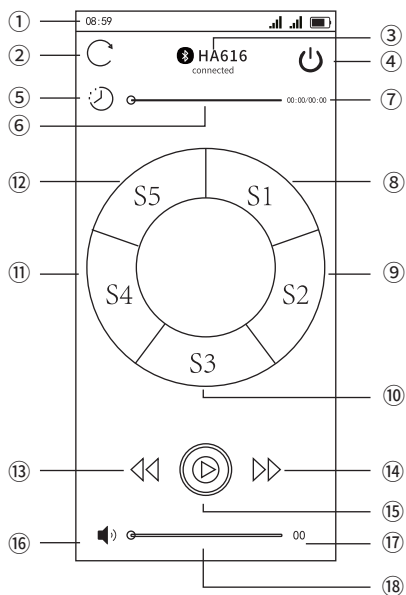
After successful connection, you can use the remote control of your phone to operate Baby Highchair

Bluetooth Location



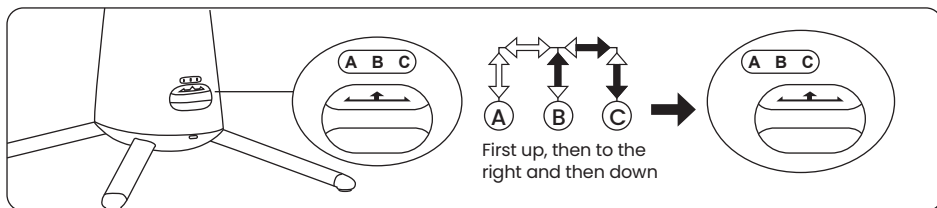
Mobile Remote Control Function Introduction

- ① Cell phone real-time status bar
- ② Connection Refresh Button
- ③ Connected and disconnected display
- ④ power button
- ⑤ Timer icon
- ⑥ Timer drag bar, up to 90 minutes
- ⑦ Timer real-time display
- ⑧ Speed gear 1
- ⑨ Speed gear 2
- ⑩ Speed gear 3
- ⑪ Speed gear 4
- ⑫ Swing gear 5
- ⑬ Previous Track Button
- ⑭ Next Track Button
- ⑮ Play/Pause Button
- ⑯ Volume Button, click to mute
- ⑰ Volume adjustment real-time display, up to 100
- ⑱ Volume control bar



6. Use of Swinging Lever:

There are 3 swinging modes. The lever needs to be lifted up and fall into one of the 3 grooves below, A, B, C from left to right.



FAULT RESOLUTION

SITUATION	CAUSE	SOLUTION
Severe shaking	No power	Connect the power
	Circuit board malfunctions	Please press the button switch 3 to 5 times after unplugging the power
Too loud / no sound	Volume adjustment	Long press the "music button" to adjust the volume, and release it after confirming the volume
		Adjust via the "Volume" button on the remote control
		Adjust by mobile remote control
It suddenly stopped working during use	It's possible that the power cord has fallen off	Reconnect the power cord
Unstable base	Uneven floor	Place on a flat surface
	Not properly installed	Check and reinstall the base
Strange smell	Not cleaned in time	Please clean the mattress component regularly

Note:

If you have any other questions, please contact our customer service.
Do not disassemble and repair the baby swing by yourself.

SPECIFICATIONS

Product Name: Baby Swing

Product mode: S3000

Input voltage: 100-240V ~ 50/60Hz, 0.5A

Output voltage: 5V = 2.0A 10.0W

Warning: Do not use the non-matching adaptor

WARNING:

Changes or modifications to this unit not expressly approved by the party responsible for compliance could void the user's authority to operate the equipment.

NOTE: This equipment has been tested and found to comply with the limits for a Class B digital device, pursuant to Part 15 of the FCC Rules. These limits are designed to provide reasonable protection against harmful interference in a residential installation. This equipment generates, uses and can radiate radio frequency energy and, if not installed and used in accordance with the instructions, may cause harmful interference to radio communications.

However, there is no guarantee that interference will not occur in a particular installation. If this equipment does cause harmful interference to radio or television reception, which can be determined by turning the equipment off and on, the user is encouraged to try to correct the interference by one or more of the following measures:

- ☐ Reorient or relocate the receiving antenna.
- ☐ Increase the separation between the equipment and receiver.
- ☐ Connect the equipment into an outlet on a circuit different from that to which the receiver is connected.
- ☐ Consult the dealer or an experienced radio/TV technician for help.

FCC Radiation Exposure Statement.

The device has been evaluated to meet general RF exposure requirement. The device can be used in portable exposure condition without restriction.

BABY SWING S3000

WARRANTY CARD

DATE OF PURCHASE:※		WARRANTY PERIOD 12 months from the date purchase
CUSTOMER INFORMATION	NAME:	
	※ Email:	
	Tel:()	
ORDER INFORMATION	Account name: ※ Order Number:	

CAUTION: INFORMATION IS NECESSARY,OTHERWISE YOU MAY NOT RECEIVE FREE REPAIRS.

WARRANTY NOTE:

1. We will repair or replace the product free of charge if it breaks down or is damaged normal use conditions according to the instruction manuals, labels attached to the main unit,etc.
2. Please contact our service Email: support@zoicaybaby.com for free repairs within the warranty period.
3. please keep your order number.
4. Even within the warranty period, repairs will be charged in the following cases.
 - ① Failure in use Failure or damage due to improper repair or madification
 - ② Failure and damage due to falling after purchase
 - ③ Failure and damage due to fire, earthquake, and other natural disasters
 - ④ Failure and damage when used for non-home use (for example, long-term use for business, installation on vehicler/ships)
 - ⑤ Failure and damage due to movement, transportation or contact with fixtures,etc.after purchase
 - ⑥ If this document is not presented
5. This book is valid only in the USA
6. This manual will not be reissued, so please keep it carefully so that it will not be lost

CUSTOMERS PROVOLEGE

Please fill in the warranty card,
contact Zoicay customer service email,
you can have below privilege:

1. **FEE REPAIR** **UP** **FREE REPLACEMENT**
2. Big discount available!

CONTACT US NOW!

INSTRUCTIONS

Step 1: Please fill in the warranty card

Step 2: Take a photo of or scan the warranty card:

Step 3: Send in to Zoicay customer service Email:

support@zoicaybaby.com

+1(844) 668-8123