

## Pet Dryer

Please read the product manual carefully before use and keep it properly.



### Must-read warning tips!

If the pet has not taken a bath, do not put the pet in and lock it.  
The pet will feel anxious and scratch and bark unstopably when dried for the first time, do not let it out during the drying process.  
Generally, the pet will lie down or lick its fur after 10-30 minutes, which indicates that it has already adapted to this product.

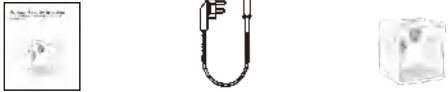
### Transition usage

1. Remove the stroking window (on both sides of the drying box, the round holes can be opened when pulled down and removed), and use this device as a nest for some days for the pet to adapt to it.
2. Turn on the cold/warm cat nest and set the wind speed to be Level 1, allowing the pet to explore and adapt to the sound of the drying box.
3. It is recommended to use the comfortable drying mode when this device is used for the first time and the fast drying mode for the second time.

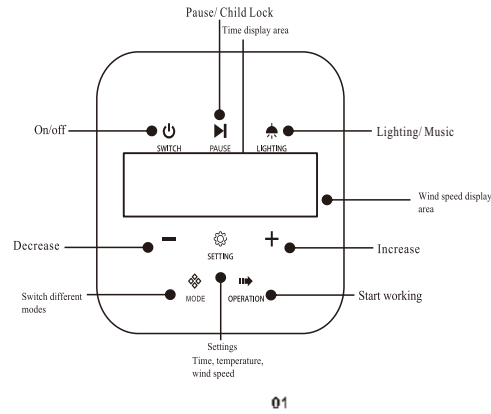
### Points for attention

1. Wipe dry the pet as much as possible. The drier the pet is wiped, the faster it will be dried.
2. Long-haired cats have denser fur, so it's recommended to thoroughly towel-dry them as much as possible before using the drying box. This helps reduce the overall drying time. The drying process typically takes 30-45 minutes. After drying, we suggest using the included comb to gently groom your cat's fur
3. The default drying time is 120 minutes. If the pet drying is finished in advance, the pet can be taken out in advance.
4. It is recommended to dry the pet with the default drying temperature of 39 degrees. The left side of the screen displays the real-time temperature inside the box, and the right side displays the set temperature.

## I Product list



## II Product introduction Panel Function



## Product Introduction - Operating Functions

### Power On Guidance:

**Power Switch:** Turn on/off the rear power switch to control the overall power.  
**Power On/Off:** Short press to turn on/off; 30-second delay for shutdown.  
**Pause:** Short press to toggle pause/operation;  
Long press (3-5s) to activate Child Lock mode; long press again to unlock.  
**Lighting:** Short press to turn the light on/off.  
Long press (3-5s) to play music; long press again to stop music.  
When playing music, press "Increase"/"Decrease" to switch songs

### Running Guidance:

Mode Selection: Short press the mode button to switch between working modes:



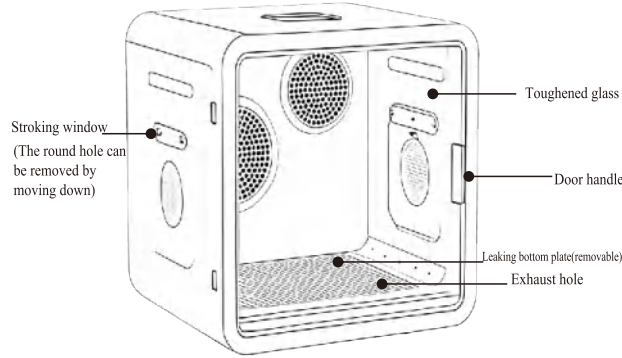
### Operation:

- ① Short press the mode button to select the operating mode.
- ② Short press the operation button to start working.

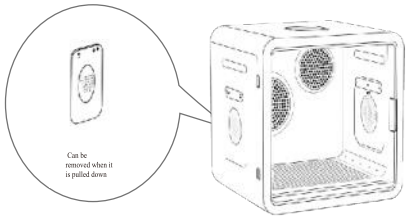
### Custom Settings:

- ① Short press the setting button to  $-$  adjust the time.
- ② Short press the setting button again to  $-$  adjust the temperature.
- ③ Short press the setting button again to  $-$  adjust the wind speed.
- ④ Short press the setting button, then press the operation button to start working.

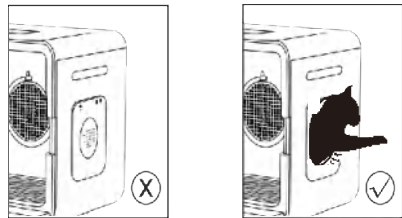
## III Product introduction Front



## III Stroking window use

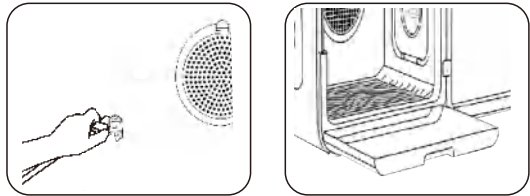


Through the stroking window, the user can interact with the pet during drying. It is recommended to often placate your pet when this device is used for the first time. The stoking window can be removed when it is pulled down.

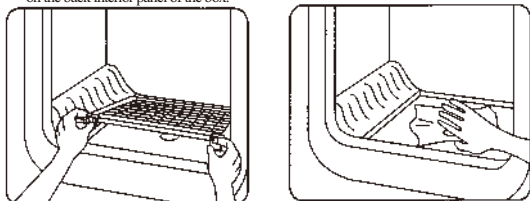


When the [Winter Warm Cat Nest] or [Summer Cool Cat Nest] mode is used, make sure to open the stroking window to let your pet come in and out at any time.

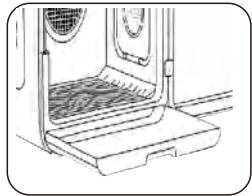
## IV Cleaning and maintenance



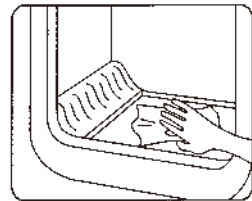
1. Make sure to unplug the power supply before cleaning and maintenance. Remove loose fur from the hair capture filter located on the back interior panel of the box.



3. Remove the inner lower water filter rack and the leaking plug for cleaning.



2. Pull out the drawer and clean the drawer.



4. The device can be cleaned with a small amount of water when placed horizontally, and then wipe it with a towel. Do not flush the machine with a large amount of water to avoid damaging the machine.

## V APP networking

App Smart Control

Scan to download and install the app: Or download "Tuya" from App Store or Android App Store, enter App "Home", click "+" to add the corresponding device, and bind the device following the prompts.



iPhone APP download



Android phone APP download

\*Only the wifi version can connect to mobile phone APP

Please use the 2.4G band router, if the 5G router is used, please turn on the 2.4G band, and use the 2.4G band for for networking.

Only the wifi version supports APP networking;  
If you use the non-wifi version, please ignore this.

### Step 1:

Press and hold the power button of the drying box for 5 seconds until the Wi-Fi indicator light on the screen starts flashing.

### Step 2:

Click the "+" icon in the top right corner of the app to add a device.

### Step 3:

Choose the option "Socket", and click the second option "Wi-Fi socket".

### Step 4:

Click "Flash" at the bottom of the app.

### Step 5:

Select the 2.4Ghz Wi-Fi network and enter the password.

### Step 6:

Wait for up to 2 minutes for the device to connect to the network. It will be ready for normal use once connected successfully. If the connection fails, please contact customer service

## VI Product Specifications

Product Name	Product Material	Product Size	Product Model
Pet Smart Drying Box	ABS, Glass	52*51*50 CM	LQ-HG003
Heating Temperature	Product Color	Timing Range	Applicable Range
22-45°C	White	10-180 minutes	Cats and Small Dogs

## VII Precautions

### Troubleshooting Equipment Issues:

Abnormal Symptoms:	Status Indicators:	Cause Investigation:
Unable to power on	Control panel buttons unresponsive	1. Check if the power cord is connected and if the power switch is turned on. 2. Unplug the power cord and reconnect it for testing.
Internal temperature of the device continues to rise	Temperature continuously rising	1. Check if the ambient temperature around the device is too high. 2. Turn off the device, wait for 10 seconds, and then restart it.

### Please Read Before Use:

1. When not using the drying box, please turn it off and disconnect the power.
2. Please use this product indoors.
3. When using the sterilization function, ensure that no pets are inside the drying box.
4. Pets must not enter the drying box for 30 minutes after using the sterilization function.
5. The main unit cannot be washed with water; simply wipe it clean.

## FAQ

### 1. Why Should Music Be Played for Cats During the Drying Process?

Some cats may feel anxious or fearful due to the noise of the drying airflow. Playing calming music for cats during the drying session can help soothe their nerves and create a more relaxing environment, reducing their stress and discomfort. You can switch the music while observing the cat's mood and choose a song that your cat likes the most.

### 2. How to Play Music? How to Adjust Music Volume?

To play calming music for cats: Press and hold the Lighting Button for 3-5 seconds. To switch between music tracks: Tap the Increase (+) Button or Decrease (-) Button. To pause the music: Press and hold the Lighting Button again for 3-5 seconds. To adjust the volume: Download the app and control the volume settings within the app.

### 3. How to Prevent Accidental Touches by Cats on the Dryer's Control Panel?

To activate Child Lock Mode: Press and hold the Pause Button for 3-5 seconds. This will lock the control panel to prevent cats from accidentally triggering functions. To deactivate Child Lock Mode: Press and hold the Pause Button again for 3-5 seconds to unlock the panel.

### 4. What Safety Measures Are in Place to Protect My Pet?

The drying box is equipped with an overheating protection system and an integrated intelligent temperature control chip. If the temperature rises abnormally, it will automatically cut off the power supply to ensure safety. Despite these safeguards, we strongly recommend that you always remain present during use to monitor your pet's comfort and well-being.

### 5. My Cat Is Scared to Enter the Drying Box for the First Time. How Can I Help My Cat Adapt to It?

After receiving the drying box, you can remove the stroking window and use the box as a cat nest for your cat to explore at their own pace. During the first drying session, interact with your cat through the stroking window to ease their anxiety. Start with the comfort drying mode and gradually increase usage to help your cat adjust comfortably.

### 6. What Size Pets Can Use this Drying Box?

It is suitable for cats of all sizes, as well as small and medium-sized dogs with a height not exceeding 50 cm.

### 7. What Is the Voice Level During Operation?

The dryer operates at a minimum voice level of  $\leq 40$  decibels, similar to a quiet office environment. Its noise-reduction design minimizes stress for pets. However, higher fan speeds may generate slightly louder voice.

### 8. What Should I Do If I Encounter Difficulties While Using the Smart Cat Drying Box?

Please feel free to contact us at [Virtualance.aftersales@outlook.com](mailto:Virtualance.aftersales@outlook.com) at any time. Whether you're facing operational challenges or experiencing technical issues with the machine, our dedicated customer support team will be more than happy to assist you in resolving the problem.

After-sales Service: [Virtualance.aftersales@outlook.com](mailto:Virtualance.aftersales@outlook.com)

Manufacturer: Jiaxing Langlang Pet Intelligent Products Co., Ltd.

Place of production: Zhejiang, China

All contents in this material have been carefully checked. If there are any typographical errors or misunderstandings, please contact us for consultation.

Notes: Any technical change to the product will be included in the new version of the manual without prior notice of the product. If there are changes in the product appearance and color, the actual product shall prevail.

## FCC Statement

This equipment has been tested and found to comply with the limits for a Class B digital device, pursuant to part 15 of the FCC Rules. These limits are designed to provide reasonable protection against harmful interference in a residential installation. This equipment generates, uses and can radiate radio frequency energy and, if not installed and used in accordance with the instructions, may cause harmful interference to radio communications. However, there is no guarantee that interference will not occur in a particular installation. If this equipment does cause harmful interference to radio or television reception, which can be determined by turning the equipment off and on, the user is encouraged to try to correct the interference by one or more of the following measures:

Reorient or relocate the receiving antenna.

Increase the separation between the equipment and receiver.

Connect the equipment into an outlet on a circuit different from that to which the receiver is connected.

Consult the dealer or an experienced radio/TV technician for help.

Caution: Any changes or modifications to this device not explicitly approved by manufacturer could void your authority to operate this equipment.

This device complies with part 15 of the FCC Rules. Operation is subject to the following two conditions: (1) This device may not cause harmful interference, and (2) this device must accept any interference received, including interference that may cause undesired operation.

RF Exposure Information

This equipment complies with FCC radiation exposure limits set forth for an uncontrolled environment. This equipment should be installed and operated with minimum distance 20cm between the radiator and your body.