

Pet Smart Feeder

4L Video Model-Instruction Manual



Please read this instruction manual carefully before using the product and keep it properly.

Feeding Suggestions

(Dog) Weight	Normal activity	Increase activity	Weight	Normal activity	Increase activity
2kg	39g	45g	8kg	111g	128g
4kg	66g	76g	10kg	131g	152g
6kg	89g	104g	12kg	150g	174g

(Dog) Weight	Normal activity	Increase activity	Weight	Normal activity	Increase activity
14kg	178g	206g	235g	20kg	233g
16kg	197g	228g	259g	22kg	250g
18kg	197g	228g	259g	24kg	267g

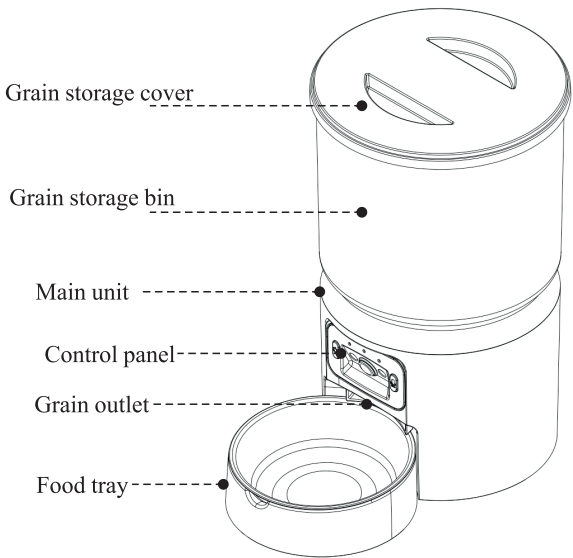
(Dog) Weight	Normal activity	Increase activity	Weight	Normal activity	Increase activity
26kg	274g	318g	361g	36kg	350g
28kg	290g	336g	381g	38kg	364g
30kg	305g	353g	402g	40kg	379g
32kg	320g	371g	422g	42kg	393g
34kg	335g	388g	441g	44kg	407g

(Cat) Age	1-2 Months	2-4 Months	4-6 Months	6-8 Months	8-12 Months
Daily amount	20~30g	30~50g	50~70g	70~80g	80~90g

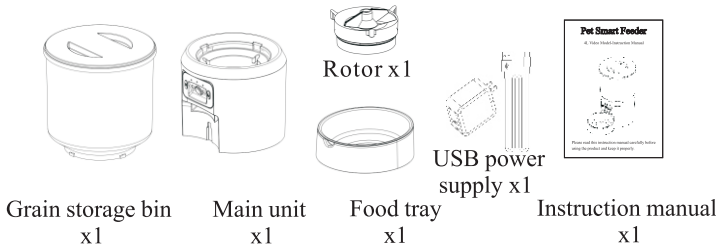
(Cat) Weight	2~3kg	3~5kg	5~7kg	Pregnant cat	Lactating cat
Daily amount	25~35g	35~55g	55~85g	70~110g	120~190g

If you find that your pet can't digest the food in the bowl, please reduce appropriately the number of meals and portions.

Product Introduction



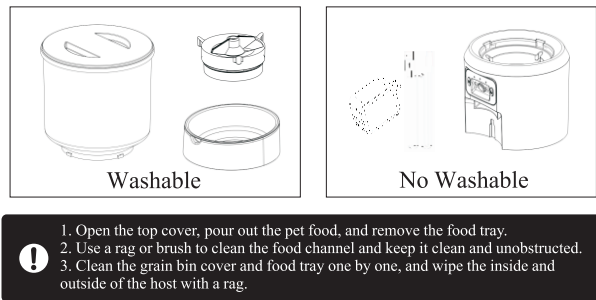
Product Accessories



Product Specifications

Product name	Pet Smart Feeder (4L Video Version)
Application	Cats, puppies, rabbits, chinchillas, squirrels etc.
Rated Voltage	5V 1A
Product Power	5W
Power supply	5V external power supply + 3 No. 2 batteries
Material	ABS+PP
Weight	1100g
Capacity	4 L
Applicable food	Use 5-16mm dry non-sticky pet food
Grain output	~10g per portion (pet food size density is different, please refer to the load-bearing standard after food output)
Product size	Diameter x height: 195x321mm
Standard	GB4706.1

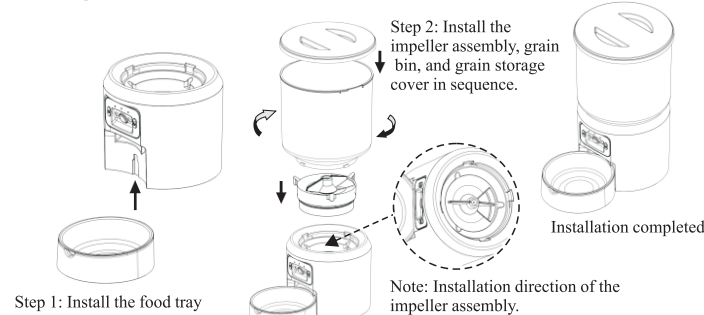
Maintenance



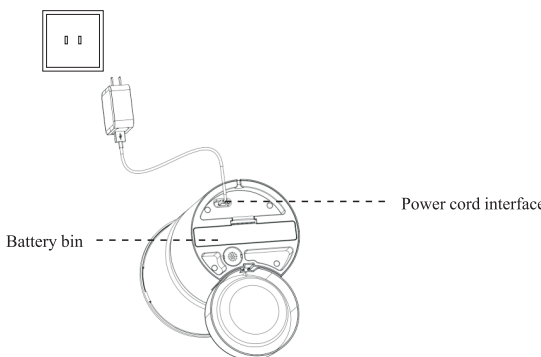
1. Open the top cover, pour out the pet food, and remove the food tray.
2. Use a rag or brush to clean the food channel and keep it clean and unobstructed.
3. Clean the grain bin cover and food tray one by one, and wipe the inside and outside of the host with a rag.

Product Assembly and Accessories Installation

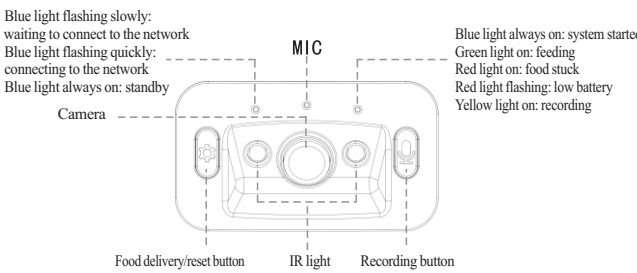
1. The food tray and adapter are in the grain storage barrel. Please remove them before installation. Place the food tray on a horizontal table or ground. Pick up the main unit, align the main unit with the base of the food tray, and place it vertically downward. Pick up the impeller assembly and snap it vertically downward into the notch. Pay attention to the matching direction. Pick up the grain storage barrel, align the grain storage barrel with the main unit snap-in position, insert it vertically downward into the snap-in, and turn it clockwise to fix it.



2. The device has two power supply methods. You can choose to use the power cord for power supply or 3 No. 2 batteries for power supply. (The battery is only used for emergency power supply and has a short standby time. Please be sure to use an external power supply and battery at the same time to ensure normal power supply of the device).

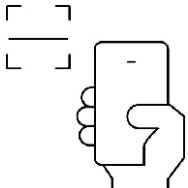


Button Instructions

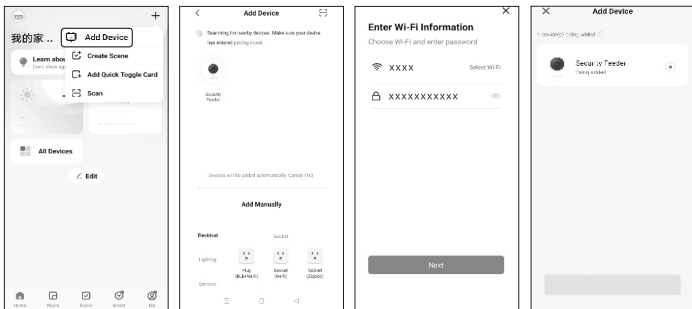


- Manual double-click, 1 serving of food delivered; long press to reset.
- Long press the yellow light to record, release to end recording.

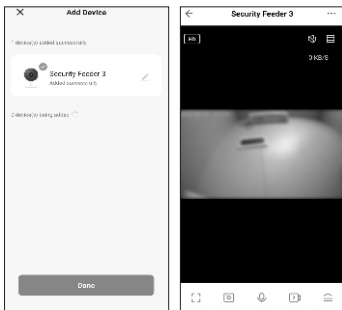
Operation Instructions for Tuya Smart App



METHOD1:Configure Wi-Fi via a o timal Recommendation

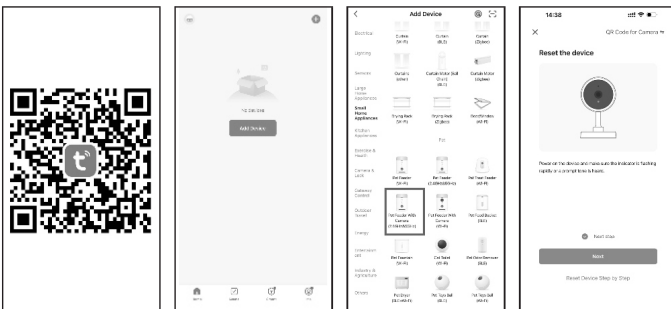


- 1.Enter the App maininterface and select"Add Device"
- 2.Please select the feeder device.
- 3.Plesse select and connect tothe wireless network.
- 4.The link is waiting

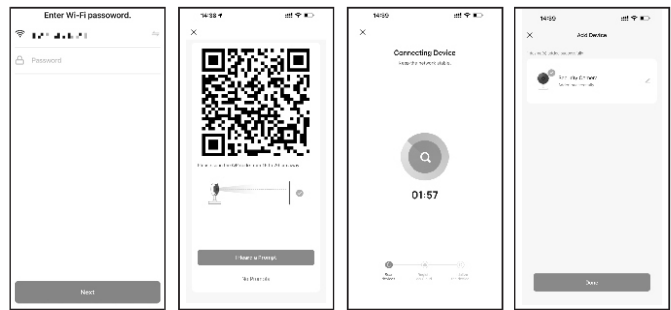


- 5.Device addition is completed.
- 6.Tap the video image toenter the specific operation.

METHOD2:Configure Wi-Fi via QR Code



- 1.Please scan the QR code to download the App,and long press the "Reset Key" to reset.
- 2.Please enter the main interface of the app to add devices.
- 3.Manually add-small home appliances-IPC pet feeder.
- 4.First confirm the device indicator light,and then click "Confirm" for the next operation.



- 5.Please enter your WIFI password, 2.4GHz Wi-Fi is supported.
- 6.Please align the QR code with the camera and maintain it at a distance of 15-20cm. When you hear a beep or see the device indicator light flashing quickly,please click the"Confirm" key.
- 7.The device is connecting to the network.
- 8.After successful addition, please name the feeder.

Q&A Troubleshooting

- Q: Will the data be lost after power failure and network disconnection?
A: The internal parameter settings will not be lost after power failure and network disconnection. It will continue to work in standby mode when working with dry batteries. (Dual power supply is recommended).
- Q: If the power cord is bitten off by a pet, will the pet be electrocuted?
A: The product equipment uses a 5V safe voltage and will not electrocute the pet.
- Q: Why can't the main unit be flushed directly with water?
A: The main unit is equipped with precision electronic components and circuit boards. If you want to keep the product clean, just wipe the outside of the main unit with a wet rag after powering off.

Safety Instructions and Precautions

1. Please store this product in a cool and dry place. Do not use it for other purposes except feeding.
2. Do not drop any items other than pet dry food into the grain storage bin, otherwise it will cause abnormal use and even cause pet safety problems.
3. Please place the feeder horizontally. It is recommended to place it against the wall to prevent being tripped by wires or bitten by pets.
4. Do not immerse the body and power supply in water, as this will damage electronic components.
5. Check the device after installation. If there is water on the power cord or plug, do not power it on.
6. Children must use the product under adult guidance.
7. Please unplug the power plug before installing or removing accessories.
8. If you do not use the product for a long time, please remember to remove the battery and unplug the power plug.
9. Do not try to repair or modify the pet feeder.
10. If you need to use an extension cord, use an extension cord of the same rating.
11. Using product accessories that are not provided or recommended by the original factory may lead to unsafe situations.
12. Please read the precautions in the instructions and on the packaging carefully.

This device complies with part 15 of the FCC Rules. Operation is subject to the following two conditions: (1) This device may not cause harmful interference, and (2) this device must accept any interference received, including interference that may cause undesired operation.

Any Changes or modifications not expressly approved by the party responsible for compliance could void the user's authority to operate the equipment.

Note: This equipment has been tested and found to comply with the limits for a Class B digital device, pursuant to part 15 of the FCC Rules. These limits are designed to provide reasonable protection against harmful interference in a residential installation. This equipment generates uses and can radiate radio frequency energy and, if not installed and used in accordance with the instructions, may cause harmful interference to radio communications. However, there is no guarantee that interference will not occur in a particular installation. If this equipment does cause harmful interference to radio or television reception, which can be determined by turning the equipment off and on, the user is encouraged to try to correct the interference by one or more of the following measures:

- Reorient or relocate the receiving antenna.
- Increase the separation between the equipment and receiver.
- Connect the equipment into an outlet on a circuit different from that to which the receiver is connected.
- Consult the dealer or an experienced radio/TV technician for help.
- This equipment complies with FCC radiation exposure limits set forth for an uncontrolled environment. This equipment should be installed and operated with minimum distance 20cm between the radiator & your body.