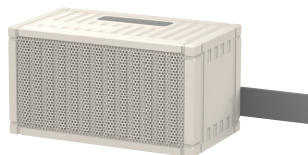


50MM

正面
50MM



BT-X1蓝牙音响说明书

使用产品前请仔细阅读说明书并妥善保管

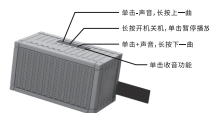
多谢选购本公司产品, 请在使用本产品前仔细阅读说明书内容, 并妥善保管本手册以备查阅。

功能特点:

1. 支持蓝牙音乐播放、蓝牙通话
2. TWS串联对播功能
3. 声音清晰、低音浑厚
4. 内置大容量聚合物锂电池
5. 低电压智能检测并提醒充电
6. 节能环保功能(无连接5分钟后自动关机)

技术参数:

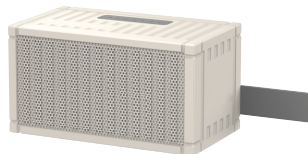
产品型号: BT-X1
电源: DC 5V/1A
电池容量: 1200mAh
传输距离: ≥10米
喇叭规格: 52mm 40SW
工艺制造: ABS
频率范围: 100Hz-10KH
混响模式: 内置回音效果
蓝牙版本: 5.0
峰值功率: 5W



功能说明:

- 开机: 长按“开关”键3秒开机, 此时工作指示灯蓝灯快速闪烁。
- 按键: -: 单击减声音, 长按上一曲。+: 单击加声音, 长按下一曲。m: 单击收音功能。
- 蓝牙连接: 打开手机蓝牙功能, 搜索蓝牙名“BT-X1”, 当连接成功后, 蓝色指示灯常亮, 打开手机播放音乐, 此时工作指示灯蓝灯慢闪。
- 播放/暂停: 在音乐播放状态下, 按一下“开关”键音乐暂停; 再按一下恢复播放。
- 通话功能: 在蓝牙连接状态下如有电话呼入, 按一下本机的“开关”键即可接听来电, 在通话过程中, 再按一下“开关”键可挂断电话。
- TWS串联对播功能: 两台同型号的产品同时开机后, 可自动配对并同时播放音乐(或者双击其中一台的开关键, 听到响声后即可自动配对)。
- 关机: 长按“开关”键3秒关机, 此时工作指示灯熄灭。
- 充电功能: 本机充电电压为 DC - 5V / 1A, 充电时红色指示灯常亮, 充满电后蓝灯常亮。
- 低电压自动检测功能: 本机有低电压自动检测功能, 当电压低于警戒线时会提醒充电。

背面



BT-X1 Bluetooth audio manual

Please read the instruction carefully and keep it properly before using the product

Thank you for purchasing our products. Please read it carefully before using it. Please keep this manual for reference.

Functional features:

1. Wireless music playback, Wireless calling.
2. TWS series box function
3. With clear sound and deep bass
4. Built-in large capacity polymer aluminum battery
5. Low voltage intelligent detection and charging reminder
6. Energy-saving and environmental protection function (automatic shutdown after 5 minutes without connection)

Technical parameters:

Product model: BT-X1
Power Supply: DC 5V/1A
Battery capacity: 1200mAh
Transmission distance: ≥10 meters
Horn specification: 52mm 40SW
Process manufacturing: ABS
Frequency range: 100Hz-10KH
Reverberation mode: Built-in echo effect
Bluetooth version: 5.0
Peak power: 5W



Function description:

- Start up: long press the "switch" button to start up for 3 seconds, and the blue light of the work indicator flashes quickly.
- Key: -: Click to reduce the sound and hold down the previous track. +: Click Add sound and hold down A song. m: Click the radio function.
- Wireless connection: turn on the phone's Wireless connection and search for the Wireless name "BT-X1" when connected After success, the blue light is always on, turn on the phone to play music, at this time the working light The blue light flickered slowly.
- Play/pause: when the music is playing, press the "on" button to pause the music and press one again Let's resume playing.
- Call function: if there is an incoming phone in the state of Wireless connection, press the "switch" of the machine. Key to answer the call, during the call, and then press the "switch" key to hang up the call.
- TWS series box function: two products of the same model can be automatically paired after starting up at the same time Play the music at the same time(or double-click the on key on one of them and hear the beep Automatic pairing.
- Shutdown: long press the "switch" button to shut down for 3 seconds, and the blue light will go out.
- Charging function: the charging voltage of the machine is dc-5v / 1A, and the red indicator light is usually used when charging Bright, blue light is always on after full charge.
- Low voltage automatic detection function: this machine has low voltage automatic detection function, when the voltage is lower than The warning line will remind you to charge.

FCC Caution:

This device complies with part 15 of the FCC Rules. Operation is subject to the following two conditions: (1) This device may not cause harmful interference, and (2) this device must accept any interference received, including interference that may cause undesired operation. Any changes or modifications not expressly approved by the party responsible for compliance could void the user's authority to operate the equipment.

NOTE: This equipment has been tested and found to comply with the limits for a Class B digital device, pursuant to Part 15 of the FCC Rules. These limits are designed to provide reasonable protection against harmful interference in a residential installation. This equipment generates, uses and can radiate radio frequency energy and, if not installed and used in accordance with the instructions, may cause harmful interference to radio communications. However, there is no guarantee that interference will not occur in a particular installation. If this equipment does cause harmful interference to radio or television reception,

which can be determined by turning the equipment off and on, the user is encouraged to try to correct the interference by one or more of the following measures:

- Reorient or relocate the receiving antenna.
- Increase the separation between the equipment and receiver.
- Connect the equipment into an outlet on a circuit different from that to which the receiver is connected.
- Consult the dealer or an experienced radio/TV technician for help.

The device has been evaluated to meet general RF exposure requirement. The device can be used in portable exposure condition without restriction.