

Mini30 Smart Curtain Kit User Manual

Please read this manual carefully before using the product!

Edition:1.0

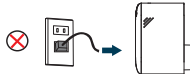
Cautions



No entry into water.



Do not disassemble.



Do not plug in before completing installation.



After installation, do not forcefully pull the curtain.



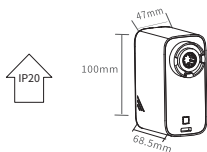
Do not strike, collide and fall.



Use after firmly installing.

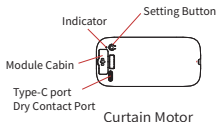
Functions

Soft start(**Cancelable**)+stop when blocking + electric stroke +slow start and stop + overtime protection + remote control + reset + reverse setting +speed regulation +Dry contact(**optional**) + Tuya/Smartlife control(**optional**)



Rated voltage: AC100-240V 50/60Hz
Working temp: -5°C~45°C
Rated Power: 28W
Rated torque: 1.8N·m
Noise: <35dB
Rated speed: 9.4 cm/S
Rated revolution : 62 r/min
Overtime protection: 3min
Protection grade: IP20
Insulation class: E
Remote: 433.92Mhz
Wi-Fi/Zigbee: 2.4GHz
APP: Tuya smart/Smartlife

Profile & Wiring



AC Power Cable

Curtain Motor

Module plug-in design



Standard interface and specifications.



Easy to switch to other modules.



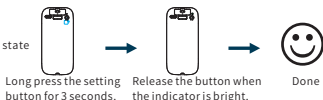
Hot-swap and Fast plug-in.




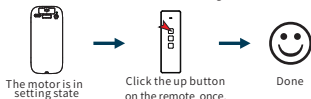
Secondary development and customization.

Settings

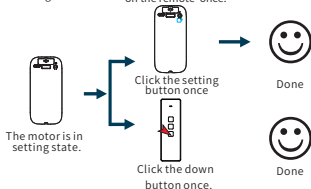
Enter the setting state





The setting state goes out within 10 seconds if there is no other operation !

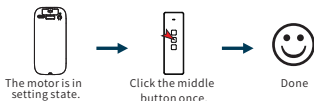


Reverse Settings



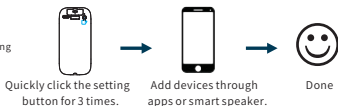

● It is effective only when the remote in use has been learned!
● The working direction of all the controls will be reversed after setting!

Soft Start

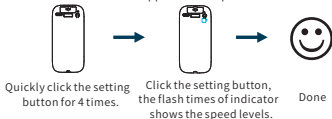




It is effective only when the remote in use has been learned!

Motor Networking



Speed Setting




● The indicator goes out in 6 seconds automatically if there are no more operations.
● 3 levels are settable.
● Default speed level is 2.

Reset (Clear Code)



Smartlife (Wi-Fi)

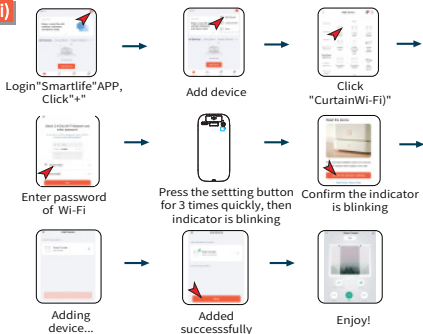


Optional function

Control by Google assistant or Amazon Alexa after bounding the ID with Google or Alexa.



Scan and get Smartlife



Smartlife (Zigbee)



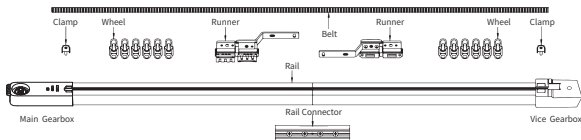
Optional function

● Make sure the Zigbee gateway has added in the APP.

● Control by Google assistant or Amazon Alexa after bounding the ID with google or Alexa.

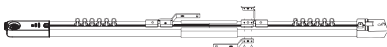


Rail exploded view

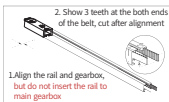


Rail assembling

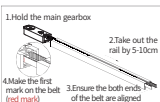
Cutting dimension of rail=Total length-Main gearbox 145mm-Vice gearbox 71mm



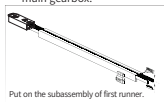
1. Pass the belt through main gearbox.



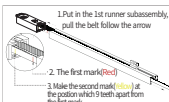
2. Show 3 teeth at the both ends of the belt, cut after alignment
1. Align the rail and gearbox, but do not insert the rail to main gearbox



1. Hold the main gearbox
2. Take out the rail by 5-10cm
3. Ensure the both ends of the belt are aligned
4. Make the first mark on the belt (red mark)

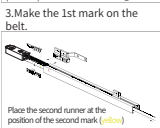


4. Place the first runner and buckle. (Install runner buckle against opposite end of marked belt, disassemble the runner into two parts, install metal part first.)

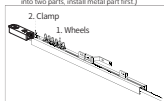


2. Cut the belt.

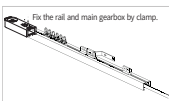
1. Put in the 1st runner subassembly, pull the belt follow the arrow
2. The first mark (Red)
3. Make the second mark (yellow) at the position which 9 teeth apart from the first mark.



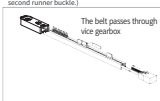
3. Make the 1st mark on the belt.
6. Place the second runner. (Align the first runner buckle with the yellow line, leaving a 3-teeth gap from the second runner buckle.)



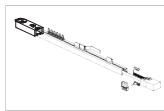
7. Place the wheels and clamp.



5. Make the second mark.
8. Fix the main gearbox.



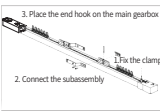
9. Place the vice gearbox.



10. Put on the subassembly of the first runner and buckle.



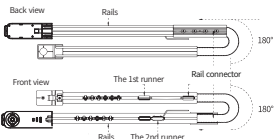
11. Place the wheels and clamp.



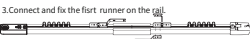
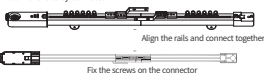
12. Fix the first runner and complete the assembling.

Guidance for pre-assembly rail

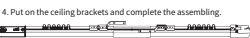
1. Open the box



2. Join the rails by connector.



3. Connect and fix the first runner on the rail.



4. Put on the ceiling brackets and complete the assembling.

For further support: support@minicurtain.com

FCC Statement

This device complies with part 15 of the FCC rules. Operation is subject to the following two conditions: (1) this device may not cause harmful interference, and (2) this device must accept any interference received, including interference that may cause undesired operation.

Changes or modifications not expressly approved by the party responsible for compliance could void the user's authority to operate the equipment.

NOTE: This equipment has been tested and found to comply with the limits for a Class B digital device, pursuant to part 15 of the FCC Rules. These limits are designed to provide reasonable protection against harmful interference in a residential installation. This equipment generates uses and can radiate radio frequency energy and, if not installed and used in accordance with the instructions, may cause harmful interference to radio communications. However, there is no guarantee that interference will not occur in a particular installation. If this equipment does cause harmful interference to radio or television reception, which can be determined by turning the equipment off and on, the user is encouraged to try to correct the interference by one or more of the following measures:

- Reorient or relocate the receiving antenna.
- Increase the separation between the equipment and receiver.
- Connect the equipment into an outlet on a circuit different from that to which the receiver is connected.
- Consult the dealer or an experienced radio/TV technician for help.

The device has been evaluated to meet general RF exposure requirement. The device can be used in mobile exposure condition without restriction.

To maintain compliance with FCC' s RF Exposure guidelines, This equipment should be installed and operated with minimum distance between 20cm the radiator your body: Use only the supplied antenna.