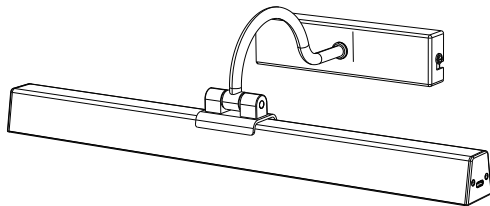


LED Light User Manual



CAUTION:

Changes or modifications to this unit not expressly approved by the party responsible for compliance could void the user's authority to operate the equipment.

CAUTION:

This device complies with part 15 of the FCC Rules. Operation is subject to the following two conditions: (1) This device may not cause harmful interference, and (2) this device must accept any interference received, including interference that may cause undesired operation.

FCC Statement:

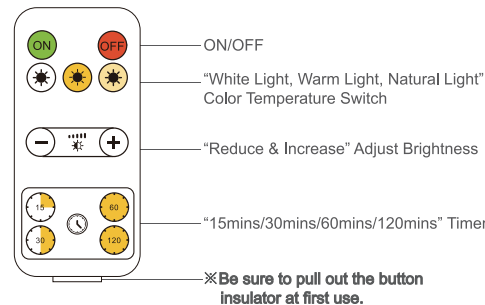
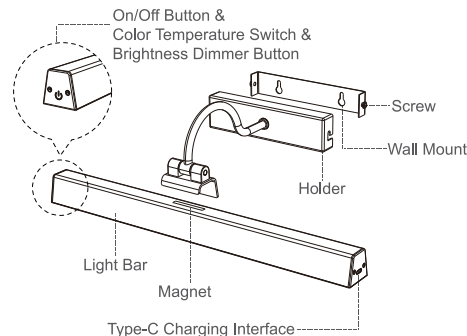
This equipment has been tested and found to comply with the limits for a Class B digital device, pursuant to part 15 of the FCC Rules. These limits are designed to provide reasonable protection against harmful interference in a residential installation. This equipment generates, uses and can radiate radio frequency energy and, if not installed and used in accordance with the instructions, may cause harmful interference to radio communications. However, there is no guarantee that interference will not occur in a particular installation. If this equipment does cause harmful interference to radio or television reception, which can be determined by turning the equipment off and on, the user is encouraged to try to correct the interference by one or more of the following measures:

- Reorient or relocate the receiving antenna.
- Increase the separation between the equipment and receiver.
- Connect the equipment into an outlet on a circuit different from that to which the receiver is connected.
- Consult the dealer or an experienced radio/TV technician for help.

What You Get

Light Bar	1
Remote Control	1
Holder	1
Wall Mount	1
Charging Cable	1
User Manual	1
Drywall Anchors and Screws Kits	3

At a Glance



Specifications

Power Rating	5W
Voltage	DC 5V
Color Temperature	3000K/4500K/6000K
Lumen	320lm
Color Rendering Index	≥95
Light Source	LED
Battery Capacity	5000mAh
Working Time	High brightness-11hous; Low brightness-80 hours;
Remote Control Distance	<5m

Functional Description

Brightness Adjustment

- 1 Light Bar Control Panel: Long touch key "☉" for brightness stepless adjustment from 10% to 100%, the brightness of each color temperature is adjustable.
- 2 Remote Control: Press key "+" or "-" for 10 levels brightness adjustment, the brightness of each color temperature is adjustable.

Color Temperature Adjustment

- 1 Light Bar Control Panel: Short touch key "☉" for 3 levels of color temperature adjustment (6000K White light, 3000K Warm light and 4500K Natural light).
- 2 Remote Control: Press color temperature buttons to change lighting color.

Timing Function

- 1 Press the corresponding timer button, the light will automatically turn off after 15mins/30mins/60mins/120mins.

Memory Funtcion

- 1 When the light is turned on again, the default brightness is the level before turning off, each color temperature can be individually memorized brightness.

Remote Control

- 1 The effective remote control distance is 3-5 meters, when using the remote control need to point to the product and ensure that there is no obstruction.
- 2 When the lamps are used in close proximity, a remote control is able to control 3 to 6 lights at the same time.

Adapter Requirements

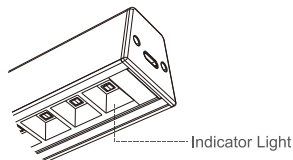
Only Charging

- 1 The product has built-in fast charging module, if you use 5V2A adapter, the charging time is about 4.5 hours; while using 5V1A adapter, the charging time will be more than 4.5 hours.
- 2 If using more than 5V adapter or power supply equipment to power this product, it may cause damage and potential safety hazard.

Charging While Using the Light

- 1 Please use 5V2A adapter when you need to charge while using the lighting, otherwise the adapter will be damaged by overload.
- 2 Charging time will be extended by lighting up the light while charging.

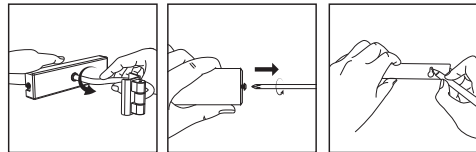
Power Display



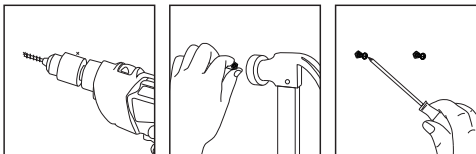
- 1 Charging state, the indicator light shows red.
- 2 When the battery is fully charged, the indicator light will turn green.

Installing the Light

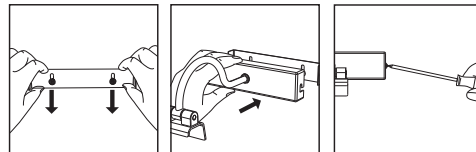
- 1 Rotate the bracket and adjust it to a horizontal position so that the magnet can hold the light bar. Unscrew the screws, remove the pegboard, fix the pegboard in the position where it needs to be mounted and mark the position of the holes on the wall with a pen.



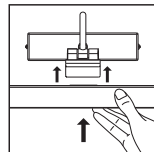
- 2 Use a drill to make holes in the positioned locations, plug the drywall anchors and screw the screws into them. The screws should not be tightened too much, you need to leave some space to be able to hang the wall mount.



- 3 Snap the wall mount onto the screws and tighten the screws and secure it; Fix the base on the wall mount, adjust its horizontal position by moving the base up and down and finally tighten the screws.



- 4 Suction the light bar to the bracket.



Troubleshooting

1 Cannot Charge

- The indicator light will be red during charging state, if the indicator does not light up, please check whether the power supply and charging cable are normally energized.
- 2 The remote control is not sensitive or does not work
 - When using the product for the first time, please remove the insulating paper behind the remote control.
 - The remote control signal is infrared and the effective distance is 3-5 meters, please point at the product and make sure there are no obstructions when using it; when the battery power of the remote control or the light is low, the sensitivity of the remote control will be weakened, please charge the light in time or replace the battery of the remote control.

Cautions

- 1 The remote control will consume power by itself, if you do not use the light for a long time, please cut off the power and save it after fully charged and it is recommended to charge the lamp at least once in a month.
- 2 When the light runs out of power during use, please charge the product in time to avoid battery damage.

CAUTION: Changes or modifications to this unit not expressly approved by the party responsible for compliance could void the user's authority to operate the equipment.

CAUTION: This device complies with part 15 of the FCC Rules. Operation is subject to the following two conditions: (1) This device may not cause harmful interference, and (2) this device must accept any interference received, including interference that may cause undesired operation.

FCC Statement: This equipment has been tested and found to comply with the limits for a Class B digital device, pursuant to part 15 of the FCC Rules. These limits are designed to provide reasonable protection against harmful interference in a residential installation. This equipment generates, uses and can radiate radio frequency energy and, if not installed and used in accordance with the instructions, may cause harmful interference

to radio communications. However, there is no guarantee that interference will not occur in a particular installation. If this equipment does cause harmful interference to radio or television reception, which can be determined by turning the equipment off and on, the user is encouraged to try to correct the interference by one or more of the following measures:

- Reorient or relocate the receiving antenna.
- Increase the separation between the equipment and receiver.
- Connect the equipment into an outlet on a circuit different from that to which the receiver is connected.
- Consult the dealer or an experienced radio/TV technician for help.