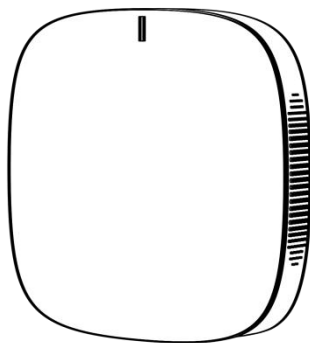


QUICK GUIDE



Mini N1

TABLE OF CONTENTS

WHAT'S INCLUDED	3
PRODUCT OVERVIEW	4
INITIAL SETUP	5
REGISTER AND LOG IN	6
SETTING UP	7
ADD NEW DEVICES TO EXISTING MINI NVR	9
MOUNTING	14
NOTICE	17

WHAT'S INCLUDED



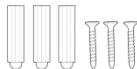
Mini White



Power Adapter



USB Cable



Mounting Screws
and Anchors



Magnet



Network Cable



Metal Mounting
Plate



External Antenna

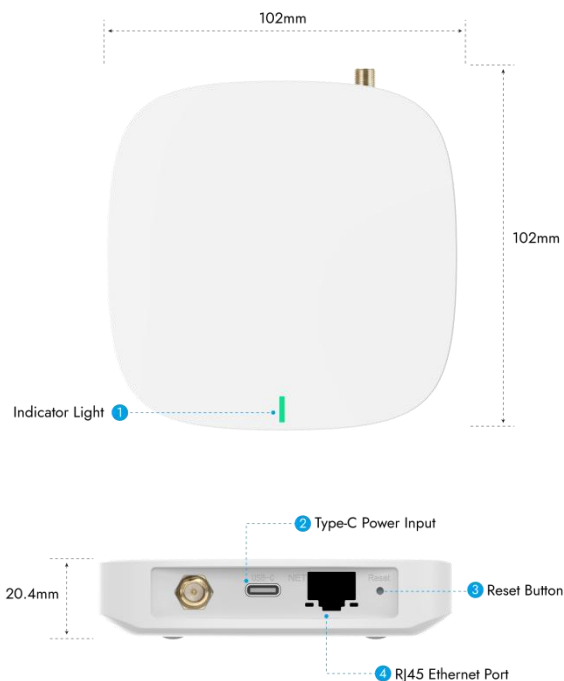


3M Stickers



Quick Guide

PRODUCT OVERVIEW



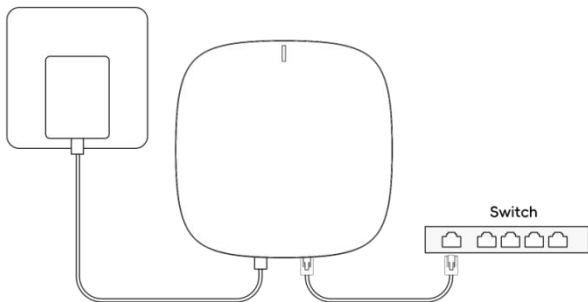
INITIAL SETUP

Step 1:

Remove the power adapter and USB cable from the package, then connect the MINI NVR to a power source.

Step 2:

Use the provided Ethernet cable to connect one end to the NVR and the other end to the RJ45 port on your router.



REGISTER AND LOG IN

Step1:

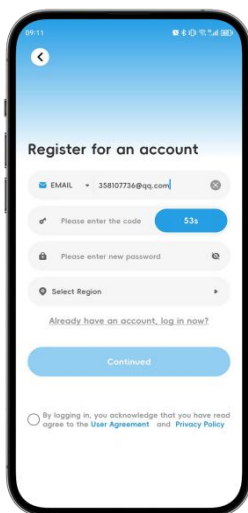
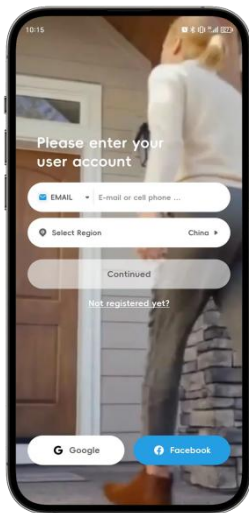
Search for "BSS Smart" on App Store or Google Play.
Download and install the App on your phone.



BSS Smart

Step2:

Register and log in to the App.

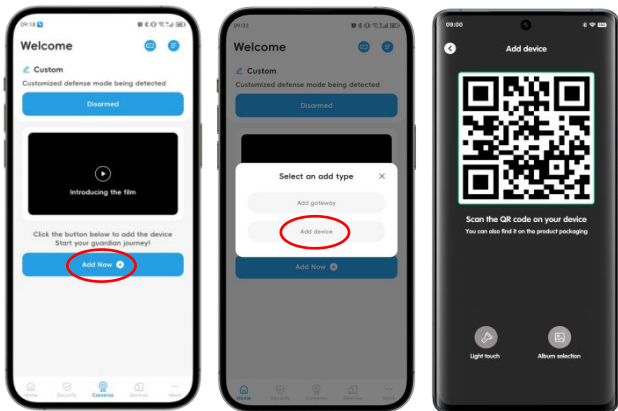


SETTING UP

The cameras in the N1 Kit are pre-paired with the MINI NVR. Simply add the MINI NVR to start the setup.

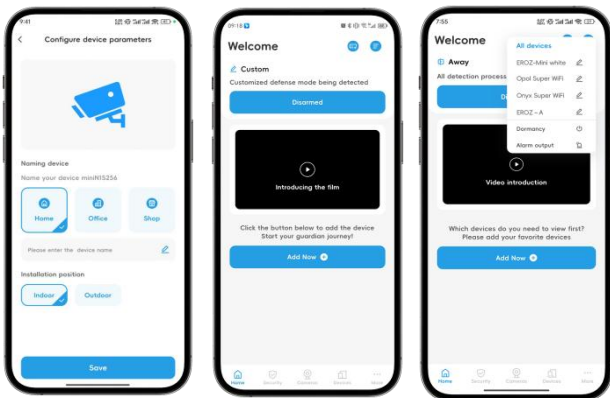
Step1:

- ◆ Ensure the MINI is powered on and the network cable is properly connected. Open the app, tap the **"Cameras"** button at the bottom to access the **"Cameras"** interface, then tap **"Add Now"**.
- ◆ Select the device type and tap **"Add NVR"**.
- ◆ Grant permission for the phone camera, and scan the QR code labeled on the MINI NVR.



Step2:


- ◆ Choose the device installation location and tap "Save". Once the device is successfully added, you will be directed to the "Home" interface.
- ◆ Tap the "Device View" button in the upper-right corner.
- ◆ Confirm that the MINI NVR has been successfully added.

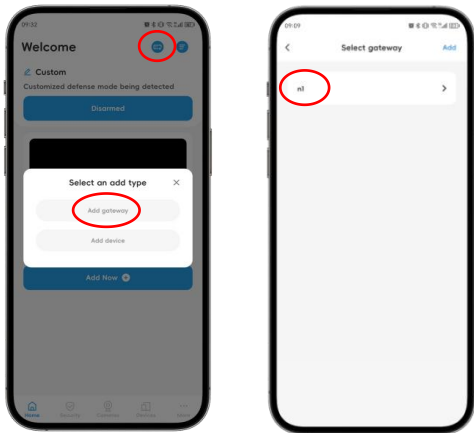


ADD NEW DEVICES TO EXISTING MINI NVR

If you purchased a device separately and wish to add it to an existing MINI NVR, follow these steps:

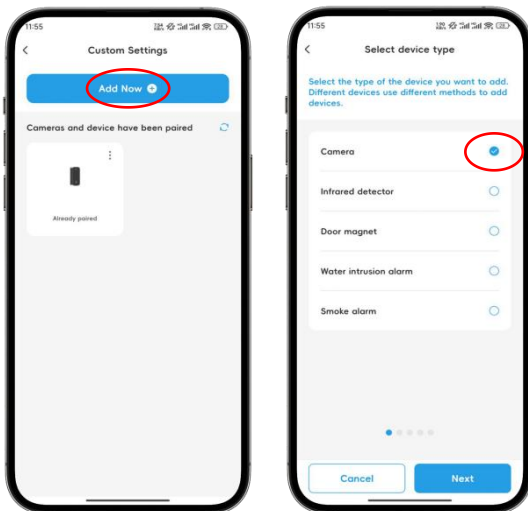
Step1:

- ◆ Tap the “” button in the upper-right corner, then select “**Add NVR**” .
- ◆ In the “**Select NVR**” interface, choose the added NVR.



Step2:

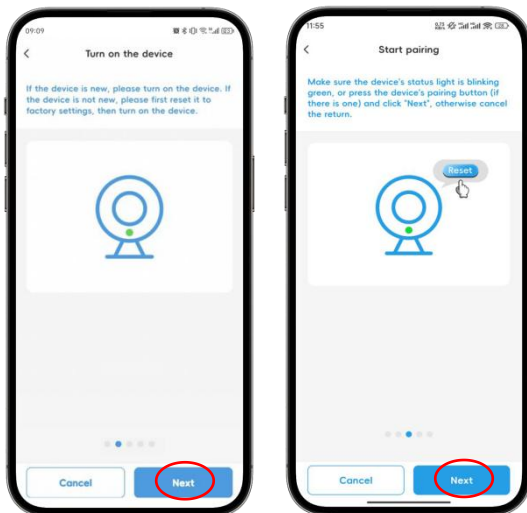
- ◆ Enter the "**Custom Settings**" interface, and tap "**Add Now**".
- ◆ Select the device type you want to pair and tap "**Next**" to enter the "**Turn on the device**" interface.



Step3:

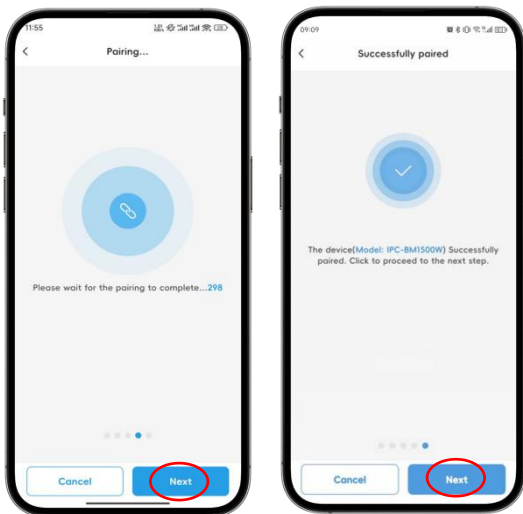
Ensure the device is powered on before pairing.

- ◆ Enter the **"Turn on the device"** interface, and tap **"Next"**.
- ◆ Tap **"Next"** again to begin the device pairing process.



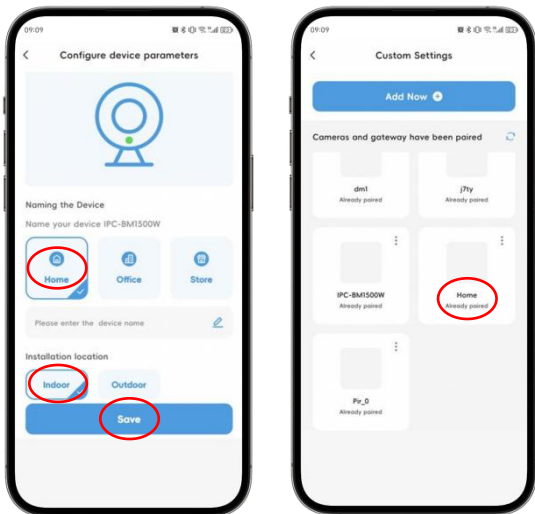
Step4:

- ◆ Please wait for the pairing to complete.
- ◆ Once the device is successfully added, tap "**Next**" to proceed.



Step5:

- ◆ You will be directed to the **"Configure device parameters"** interface. Select the device installation location, name the device, and tap **"Save"** to complete the pairing process.
- ◆ The added devices will now appear on the **"Custom Settings"** interface.



MOUNTING

Step 1: Select Installation Location

Choose a position near the center of the room to ensure optimal Wi-Fi signal coverage. Additionally, select a location that provides easy access to power outlets and Ethernet cables for NVR installation.

Installation Methods:

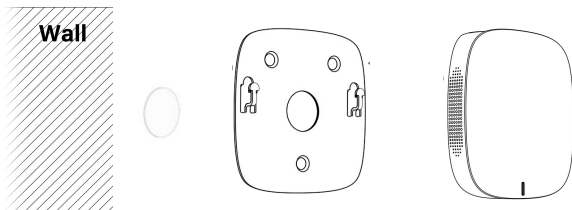
Method 1: Desktop Placement

Place the NVR directly on a stable, flat surface for easy access and setup.



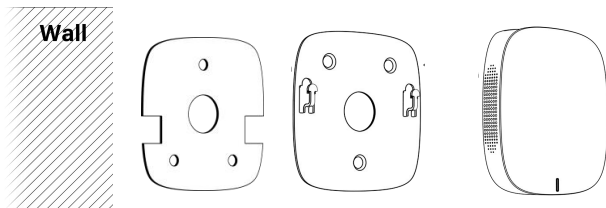
Method 2: Magnetic Adsorption

For iron-based smooth surfaces, use the included magnets to attach the mounting bracket, then mount the NVR onto the bracket.



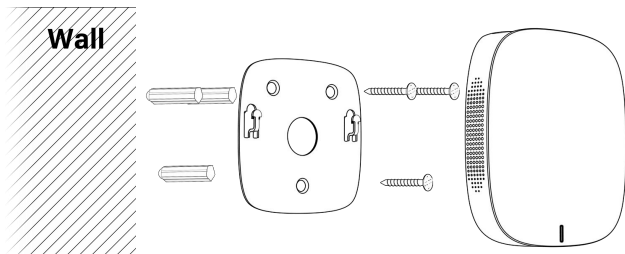
Method 3: 3M Adhesive

Attach the mounting bracket to the desired location by using the provided 3M adhesive strips, then mount the NVR onto the bracket.



Method 4: Screw Installation

Secure the mounting bracket to the desired surface using screws from the accessory kit, then mount the NVR onto the bracket.



NOTICE

- ◆ **Operating Environment:** Suggested temperature: -10°C to +45°C (14°F to 113°F), humidity ≤ 95% (no condensation).
- ◆ **Power Port:** Ensure the power port is not exposed to water or moisture.
- ◆ **Installation:** Avoid placing the device near water sources, fire/heat sources, or areas prone to WiFi signal interference to prevent performance degradation.
- ◆ **Indicator Status Definitions:**
 - **In Operation:** Green light is steady (always on).
 - **Pairing:** Green light is flashing.
 - **Not Connected to the Network:**
Orange light is steady (always on).
 - **Device Connection Failed or Interrupted:**
Orange light is flashing.
 - **Abnormal Operation:**
Red light is steady (always on).

- **Alarm Event:** Red light is flashing.

◆ **Specifications:**

- SATA: Up to 1TB SSD SATA can be built-in.
- Dimensions: 102mm x 102mm x 20.4mm
(4.02 x 4.02 x 0.8 inches).
- Net Weight : 100g (0.22 lb).
- Gross Weight: 380g (0.84 lb).
- Operating Temperature: -10°C to +45°C
(14°F to 113°F).
- Operating Humidity: 10% to 90%.

NOTE: This equipment has been tested and found to comply with the limits for a Class B digital device, pursuant to part 15 of the FCC Rules. These limits are designed to provide reasonable protection against harmful interference in a residential installation. This equipment generates, uses and can radiate radio frequency energy and, if not installed and used in accordance with the instructions, may cause harmful interference to radio communications. However, there is no guarantee that interference will not occur in a particular installation. If this equipment does cause harmful interference to radio or television reception, which can be determined by turning the equipment off and on, the user is encouraged to try to correct the interference by one or more of the following measures:

- Reorient or relocate the receiving antenna.
- Increase the separation between the equipment and receiver.
- Connect the equipment into an outlet on a circuit different from that to which the receiver is connected.
- Consult the dealer or an experienced radio/TV technician for help.

Changes or modifications not expressly approved by the party responsible for compliance could void the user's authority to operate the equipment.

This device complies with Part 15 of the FCC Rules. Operation is subject to the following two conditions:

(1) this device may not cause harmful interference, and (2) this device must accept any interference received, including interference that may cause undesired operation.

RF Exposure Warning Statements:

This equipment complies with FCC radiation exposure limits set forth for an uncontrolled environment. This equipment shall be installed and operated with minimum distance 20cm between the radiator & body.