

FCC warning:

Any Changes or modifications not expressly approved by the party responsible for compliance could void the user's authority to operate the equipment.

Note: This equipment has been tested and found to comply with the limits for a Class B digital device, pursuant to part 15 of the FCC Rules. These limits are designed to provide reasonable protection against harmful interference in a residential installation. This equipment generates uses and can radiate radio frequency energy and, if not installed and used in accordance with the instructions, may cause harmful interference to radio communications. However, there is no guarantee that interference will not occur in a particular installation. If this equipment does cause harmful interference to radio or television reception, which can be determined by turning the equipment off and on, the user is encouraged to try to correct the interference by one or more of the following measures:

- Reorient or relocate the receiving antenna,
- Increase the separation between the equipment and receiver.
- Connect the equipment into an outlet on a circuit different from that to which the receiver is connected.
- Consult the dealer or an experienced radio/ TV technician for help.

The device has been evaluated to meet general RF exposure requirement. The device can be used in portable exposure condition without restriction.

This device complies with part 15 of the FCC Rules. Operation is subject to the following two conditions:

(1) This device may not cause harmful interference, and (2) this device must accept any interference received, including interference that may cause undesired operation.

IC warning:

- English:

This device contains licence-exempt transmitter(s)/receiver(s) that comply with Innovation, Science and Economic Development Canada's licence-exempt RSS(s).

Operation is subject to the following two conditions:

(1) This device may not cause interference, and (2) This device must accept any interference, including

interference that may cause undesired operation of the device.

- French

L'émetteur/récepteur exempt de licence contenu dans le présent appareil est conforme aux CNR d'Innovation, Sciences et Développement économique Canada applicables aux appareils radio exempts de licence. L'exploitation est autorisée aux deux conditions suivantes

- 1) L'appareil ne doit pas produire de brouillage;
- 2) L'appareil doit accepter tout brouillage radioélectrique subi, même si le brouillage est susceptible

d'en compromettre le fonctionnement.

The device has been evaluated to meet general RF exposure requirement. The device can be used in portable exposure condition without restriction

L'appareil a été évalué pour répondre aux exigences générales d'exposition aux RF. L'appareil peut être utilisé sans restriction dans des conditions d'exposition portables.

Warning

DO NOT:

- Microwave,freeze,or boil.
- Use with carbonated or pulpy beverages.
- Use cleaners containing bleach,chlorine,abrasives.
- Continue to use if product is damaged.
- Overfill,Fill liquids below the threads to avoid accidental spilling.
- Force the Lid open with tools of any kind.
- Use with dry ice,explosion can occur.

WaterH warranty excludes damages caused by negligence, accident, abuse, alteration or modification.

IMPORTANT:

This product is not suitable or intended for use by children. This product contains small parts and may otherwise be hazardous to small children, especially children under 3 years old. Keep product and any dangerous equipment, including those using batteries, out of the reach of small children!

WaterH. All rights reserved.
Designed in Canada. Manufactured in China.
Headquarters in Toronto, Ontario.

Hydrate to Help Others



WaterH is committed to helping people worldwide hydrate easier and safer. That is why a portion of our proceeds will go directly to our water charity partner - Water.org.

When you support WaterH, you help those in need gain access to safe drinking water.

Tell the World!

We're proud of our product and to be part of your journey towards achieving hydration wellness! Tag or mention us on Instagram and we'll post it!

@enjoywaterh #DrinkConfidently

Customer Service

Have a specific question?
Reach out to us directly at service@waterh.com

FAQ

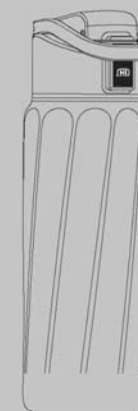
Got questions? We have answers.
Visit our FAQ at www.waterh.com/faq

www.waterh.com

WATER H

SERIES 3

User Manual



Conquer Hydration

Auto Accurate Tracking

No need to guess or log manual entries. The sensor inside WaterH automatically tracks your exact level of hydration.

360° LED Hydration Reminder

Subtle reminder so you stay hydrated all day. Customize reminder preference and frequency in the app.

Intelligent display

When drinking water, it can immediately display the amount of drinking water and the degree of completion of drinking water goals. No need to check APP data all the time

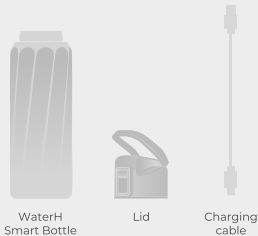
Motivational Quote

Smart bottle screen and WaterH APP displays motivational messages to encourage users to drink more water

* Days may vary depending on your drinking habits.

1. Getting Started

In Your Package



Step 1 - Charging

Take the Series 3 bottle and connect it to the TYPE C charging cable. Then plug the TYPE C into any TYPE C wall charger until fully charged.

Step 2 - Cleaning

Wash lid and body thoroughly before first use.

Step 3 - Enjoy

Fill the bottle with water and enjoy

2. The Mobile APP

Hydration intake is precisely tracked for you in the app

- No need to manually log water consumption or make your own calculations.
- No more kicking yourself for forgetting to log an entry and lose track.

• No more guessing whether you've had enough water.

For a full WaterH experience, scan the QR code and download the WaterH app via the App Store or Google Play Store.



Step 1 - Create Account

In the WaterH app, register for an account.

Step 2 - Bring Your Phone Near Your WaterH Bottle

Click the button in the upper right corner of the WaterH app.

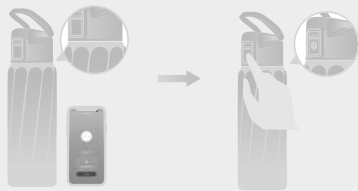


Step 3 - Pair Device

Click "Connect" in the WaterH app to begin pairing. WaterH bottle will display a solid blue LED light.

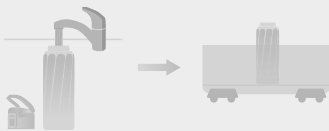
Step 4 - Complete Setup

Touch using your finger, the touch screen on the WaterH lid. Confirm successful pairing by checking your WaterH app for a display message "Connect Successful".

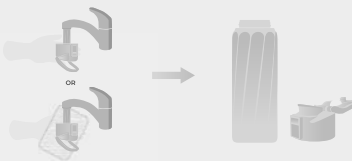


3. Care Instructions

- 1.To prevent buildup or residue,thoroughly dry prior to use or storage. Store with cap removed.
- 2.The stainless steel body is dishwasher safe



- 3.The lids is hand wash or use a damp cloth
- 4.Rinse lid and stainless steel body after each use with the lid in the open position



4. Display & Grow

You're officially all set!

Display Modes



Battery

123.4
OZ

Tracks water intake



Daily goal



OTA



Lock the button

Light Modes



Hydration Reminder
Breathing blue light



Ready to be Paired
Steady blue light



Low Battery
Need to charge

*Water consumption data is automatically synced from your WaterH bottle to the WaterH app when devices are in close proximity (16 feet/ 5 meters) of each other.