

Wireless Compression Boots

MODEL NO. S9082



User Manual

Please read the instructions carefully before use and keep it well for further reference.

Contents

Safety Precautions	1-2
FAQs	2-4
Specifications	5-5
Product Description	6-7
Operating Instructions	7-10
Troubleshooting	11-11
Notes after Use	12-12
Cleaning	13-13
Storage & Maintenance	13-13
Disposal	13-13
Package includes	14-14

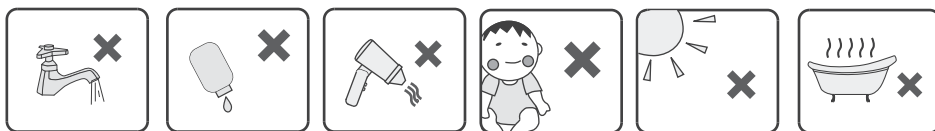
Safety Precautions

Please read the following safety precautions carefully to ensure safe and correct use.

Warnings

1. If you experience severe pain, any unusual symptoms, or want to remove the sleeves in an emergency during use:
 - Press the power button to stop the device;
 - Remove the sleeves and consult your doctor.
2. Consult your doctor before using this device if:
 - a. Using pacemaker or other medical devices which are susceptible to electrical interference;
 - b. Suffering from malignant tumors;
 - c. Suffering from cardiac diseases;
 - d. Having serious peripheral neuropathy dysfunction or sensory disturbance caused by diabetes;
 - e. Being unsuitable to do the massage because of traumas or bone fractures on the body;
3. Keep it out of the reach of infants, children, and people without the ability to use it independently.

4. Don't use another charger but the original one.
5. Don't scratch, damage, process, excessively band, pull or twist the power cord of charger. Otherwise, it may cause fire or electric shock.
6. It is not allowed to use when the charger dysfunctions or the plug is loose.
7. Don't plug or unplug the charger with wet hands.
8. Don't put the controller in the quilt or use the machine in high temperature condition.
9. It is forbidden to remodel, disassemble or repair the product without permission.



Cautions

1. Don't use it in the bathroom or other humid places.
2. Unplug the charger when you are not using it.
3. Don't walk around when you are using this item or wearing the sleeves.
4. Do not leave the system, power supply, or any accessories where they could be damaged by children, pet, pests, or liquids.

FAQS

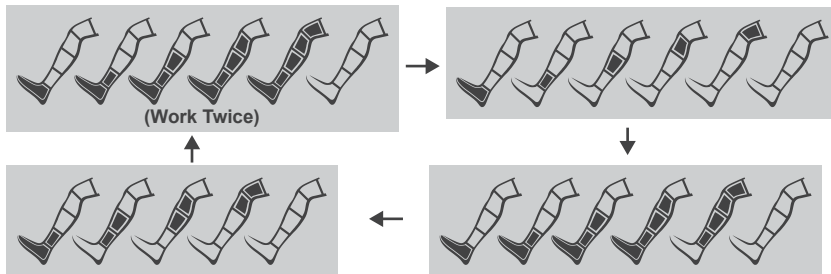
Q1: How does this product massage?

A1: This is an air compression device with 5 overlapped chambers (foot, lower calf, upper calf, and thigh) that are inflated and deflated using a sophisticated sequence to simulate hand kneading and stroking. It maximizes blood flow throughout the body, reduces pain and soreness in the treated areas and improves circulation.

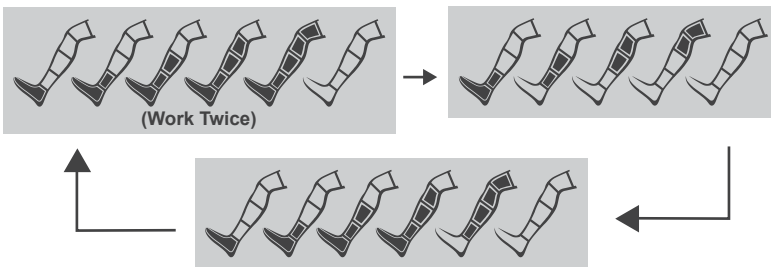
Q2: How many massage modes, and what's the difference?

A2: There are 3 massage modes:

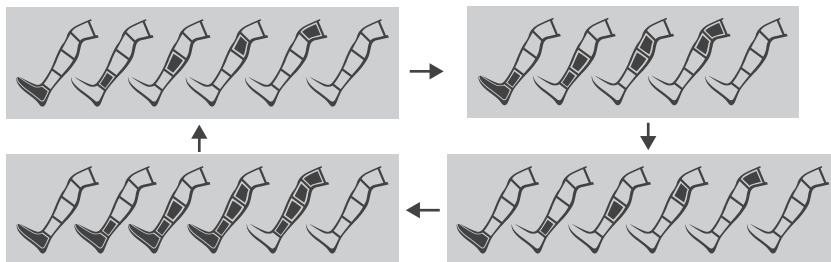
Mode 1: Combination Mode



Mode 2: Circulation Mode



Mode 3: Sequence Mode



Q3: Does the power have to be plugged into an electrical socket when in use?

A3: No, the controller has a rechargeable battery that you could use wherever you like.

A fully charged battery can last up to 2.5 hours (depending on mode and intensity).

Q4: What should I do if I feel the massage strength is too weak or too strong?

A4: There are 11 levels of massage strength available, please select the one that is appropriate for you. If you still feel it is too strong at the lowest setting, please stop using the device, we suggest consulting your doctor before next use.

Q5: How long should I use it?

A5: Recommend Use Time:1-2 times a day, no more than 60 minutes at a time. But you can restart it if you feel too tired and want it massage longer to work on the soreness.

Q6: How can two leg sleeve works synchronously ?

A6: After turn on the power button of both controller and bluetooth are connected (bluetooth marking will show on both controllers), two leg sleeve will work synchronously. You could operate one controller, the other controller will work in the same mode & same intensity & same timer.

You also could use one leg sleeve if you only turn on one controller. To gain better relief, it is normally advisable to use both of two leg sleeves at the same time.

Q7: Why does the controller make sound?

A7: The sound comes from the working air pump in the controller, providing air continuously to the airbags in the sleeves, that's normal.

Q8: When should I use this product?

A8: This device pushes the blood to flow and effectively relieves muscle soreness and fatigue; Because it is rechargeable and portable, you can use it anywhere anytime you like. Ideal for pre-workout warming up and post-workout rehabilitation, as well as when returning home from a long day at work.

Q9: What is the function of "Air Release" button ?

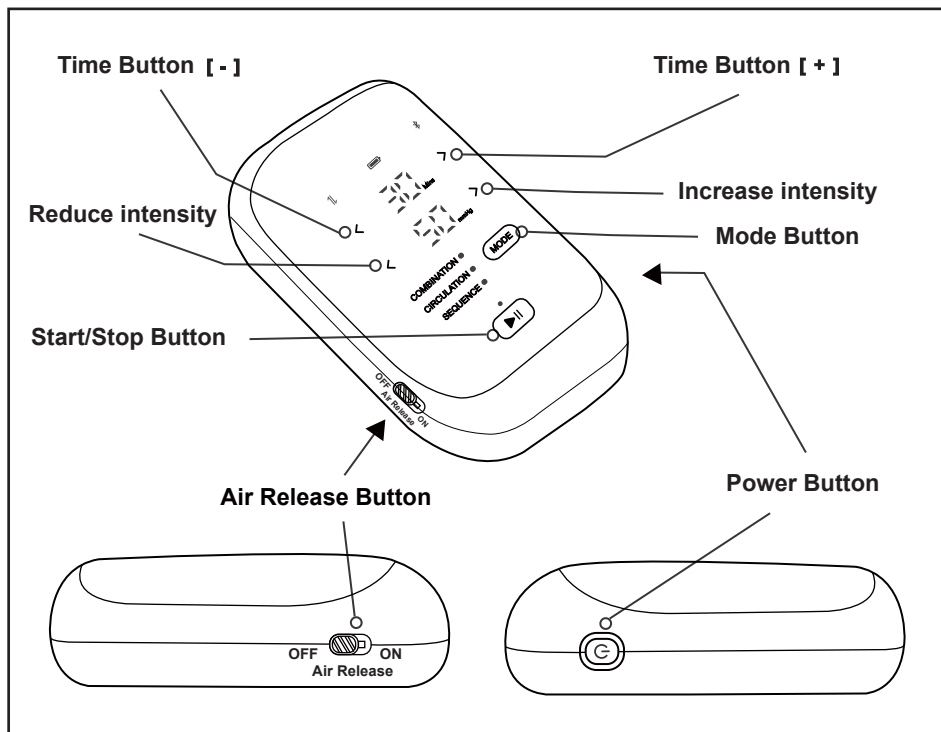
A9: The default position of "Air Release" button is at "OFF" position.

When you feel the intensity is too strong to make you uncomfortable during use, please push "Air Release" button to "ON" position to release the air.

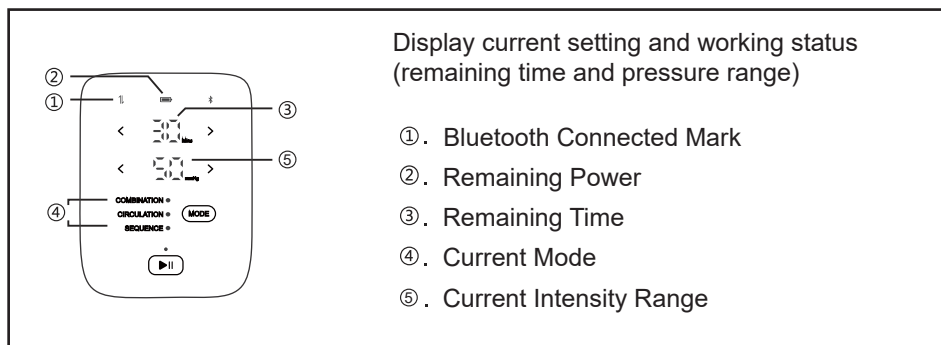
Specifications

Product Name	Wireless Compression Boots
Model	S9082
Charger	AC 100~240V 50/60Hz,DC5V/3A
Rated Power	15W
Battery Capacity	7.4V 2600mAh
Charging Time	About 2H
Using Time with One Charging	2.5H
Material	Sleeves : Durable Nylon; Controller : Fireproof ABS; Air Hoses : Silicone
Compression Modes	3 Modes: Sequence/Circulation /Combination
Intensity Levels / Pressure Range	11 Levels: LOW-50~70mmHg; MID-80~110mmHg; HIGH-120~150mmHg
Timer	10 Levels Optional(15Mins~60Mins)
Weight (with all accesories)	3.0 KGS
Sleeve size (S)	Inseam length: 80 cm. Maximum thigh circumference: 72 cm. Maximum foot circumference: 42.5 cm.
Sleeve size(M)	Inseam length: 86 cm. Maximum thigh circumference: 75 cm. Maximum foot circumference: 46 cm.
Sleeve size(L)	Inseam length: 90 cm. Maximum thigh circumference: 82 cm. Maximum foot circumference: 47.5 cm.
Operating Conditions	Temperature: +5℃ to 35℃; Humidity: 5% to 80% non-condensing; Atmospheric Pressure: 70 kPa to 106 kPa;
Storage Conditions	Temperature: -20℃ to 55℃; Humidity: 5% to 90% non-condensing; Atmospheric Pressure: 70 kPa to 106 kPa; Keep dry and avoid direct sunlight exposure.

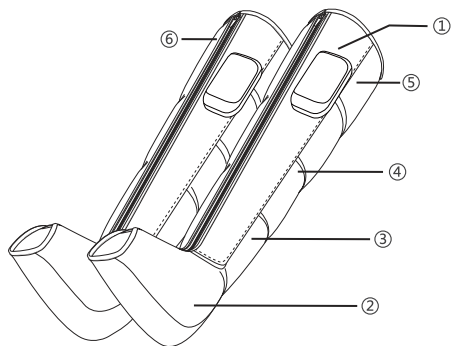
Controller



Display Screen



■ Massage Sleeve



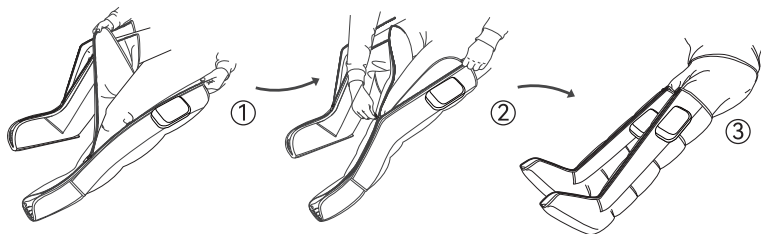
- ①. Controller
- ②. Foot Air Chamber
- ③. Lower Calf Chamber
- ④. Upper Calf Chamber
- ⑤. Thigh Chamber
- ⑥. Zipper


■ Operating Instructions

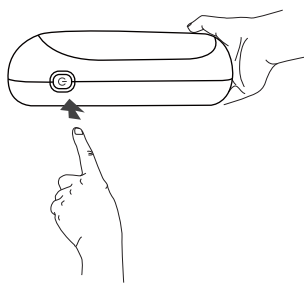
Please read safety precautions carefully before using the product. In order to get better massage, please use it according to the instruction.


1. Put the sleeves on your legs properly. There is no left-right difference between the sleeves.

*** Please make sure the zipper is zip up completely before using,**
don't use this system with the zipper partially or totally unzipped.





3. Find a comfortable sitting, reclined, or lying down position. Press the power button "  " for 3 seconds, until you hear an audible " Di ", the device turns on. It will start massage with the default setting.



4. Press mode button"  " to change the massage mode. 3 modes optional,see the difference in FAQS A2 session.



5. To adjust pressure intensity, press the pressure button"   ", there are 11 Levels available.
LOW-50~70mmHg; MID-80~110mmHg; HIGH-120~150mmHg.

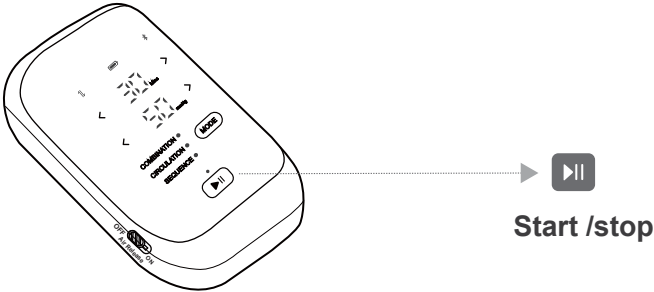


6. Press the time button "< >" to choose treatment time, 10-time interval options available (15-60 minutes). Default setting is 30 mins, each press will add or subtract 5 minutes.



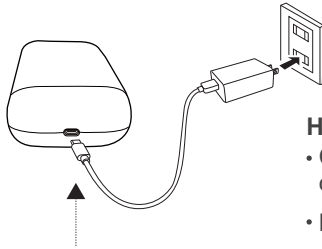
Tips: When need to press the Start / Stop Button ?

You need to press the "▶||" in the following situation .
Anytime you want to pause, press "▶||" .



■ About Charging

Fully charge the battery for up to 2 hours before using it for the first time.



How to charge the battery?

- Connect the attached charger to the type-c charging port on the base of the controller.
- Plug the charger into a wall outlet.

Type-C Charging Port

The Battery Indicator LEDs on the controller screen indicate the current battery level.

The battery indicator keeps blinking white when the device is charging.

The battery indicator stays white when the battery is fully charged.

- The indicator stays white when the battery level exceeds 50%.
- The indicator stays orange when the battery level is below 50%.
- The indicator stays red when the battery level is below 20%.
- The indicator keeps blinking red when the battery level is below 10%.

Note:

Please use the attached charger inside our package, do not use any other power adapter.

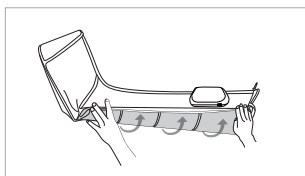
Troubleshooting

Problems	Possible Causes	Solutions
Doesn't work and screen is off.	Power is not turned on	Press the power button to turn the controller on
	Battery runs out of power	Please fully charge the battery
The screen is on but the sleeves doesn't work.	Press the Start / Pause button to pause during use	Press the Start / Pause button to start
	The sleeves have been damaged	Check if the sleeves have an air leak, if there is, please contact us.
Break off during operation or stop pumping.	Battery runs out of power	Please fully charge the battery
	The treatment session time is up	The device will shut off automatically when the pre-set timing is up, press the power button to start a new session if needed.

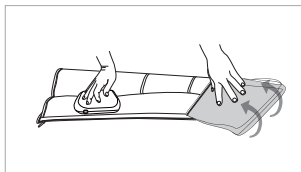
Notes After Use

1. After using this device, please turn off the control unit by pressing the power button.
2. Take off the sleeves and pack all the accessories into the storage bag after the boots completely deflate.

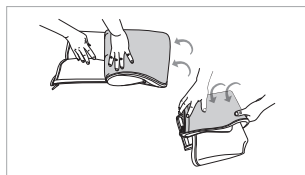
How to fold the sleeves?



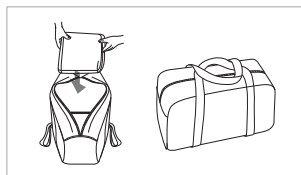
① Fold the sleeve in half



② Fold the sleeve up from the heel area



③ Fold upward about 3 times



④ Place the folded sleeve into the storage bag

I Cleaning

Make sure to cut off the power before you clean the device.

1. If dirty, please wipe the controller, sleeves with a damp, clean cloth.
2. Dry thoroughly with a clean cloth.
3. Don't use gasoline, alcohol, diluent, and other irritating liquid to wipe the machine in case it causes malfunction or the components are damaged or discolored.
4. Don't allow foreign matters to enter the hoses.
5. Don't dry clean.

I Storage & Maintenance

1. Don't disassemble the device by yourself. it has no user-serviceable part. If you have any problems during using this product, please contact us.
2. Keep it out of the reach of infants, children and people without the ability to use it independently.
3. Don't place it in high temperature and humidity condition.
4. Avoid direct sunlight.
5. Avoid needles puncture the sleeves.
6. Don't place heavy stuff on it.
7. Keep the open ports of the controller, hose interconnect, and power in let free of debris.
8. Do not allow lint or dust accumulates, wipe down the system with a dry cloth before use.

I Disposal

Please adhere to the local regulations when you dispose of the wasted.

Package Includes

- 2 x Massage Sleeves With Controller
- 1 x Charger(DC 5V 3A)
- 1 x Type-C Cable
- 1 x User Manual
- 1 x Portable Carrying Bag

RF exposure statement

This equipment complies with the FCC radiation exposure limits set forth for an uncontrolled environment. This transmitter must not be co-located or operating in conjunction with any other antenna or transmitter.

FCC Warning

This device complies with Part 15 of the FCC Rules. Operation is subject to the following two conditions:

(1) This device may not cause harmful interference, and (2) this device must accept any interference received, including interference that may cause undesired operation.

Note: This equipment has been tested and found to comply with the limits for a Class B digital device, pursuant to part 15 of the FCC Rules. These limits are designed to provide reasonable protection against harmful interference in a residential installation. This equipment generates, uses and can radiate radio frequency energy and, if not installed and used in accordance with the instructions, may cause harmful interference to radio communications. However, there is no guarantee that interference will not occur in a particular installation. If this equipment does cause harmful interference to radio or television reception, which can be determined by turning the equipment off and on, the user is encouraged to try to correct the interference by one or more of the following measures:

- Reorient or relocate the receiving antenna.
- Increase the separation between the equipment and receiver.
- Connect the equipment into an outlet on a circuit different from that to which the receiver is connected.
- Consult the dealer or an experienced radio/TV technician for help.

NOTE 2: Any changes or modifications to this unit not expressly approved by the party responsible for compliance could void the user's authority to operate the equipment.

