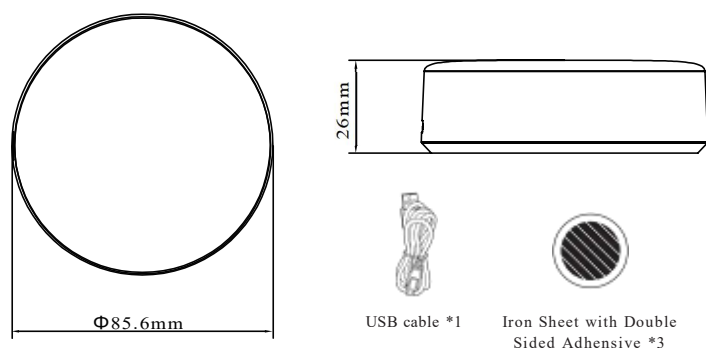


Dimensions & Accessories



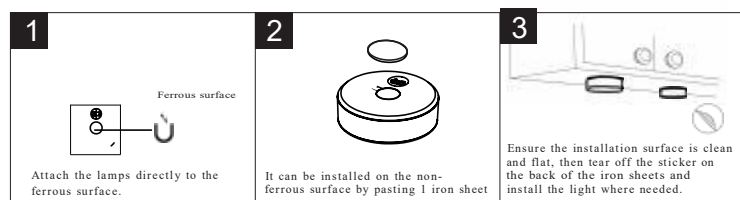
Specifications

Model	UB06RB
Battery	3.7V400mA
Power	2W
Lumen	130lm max
Color	White
Color Temp.	3000K/4000K/6000K+RGB
Beam Angle	110°
DIM	Dimmable
USB Charging	Type-C
CRI	>80Ra
Lifespan	30000 hours

Installation

WARNING!

- DO NOT soak the light in water or short-circuit it.
- STOP USING if it is severely swollen or water-soaked.
- DO NOT place the product into fire, open flame or hot surface as it may cause combustion or explosion.



STORAGE AND DISPOSAL

Storage

The product must be stored in a dry and clean environment. Do not strain the product mechanically during storage.

- After a damp or soiling storage the product may only be installed After checking its condition by an approved electrician.

Disposal

Electrical and electronic equipment, accessories and packaging must be recycled in an environmentally compatible manner.

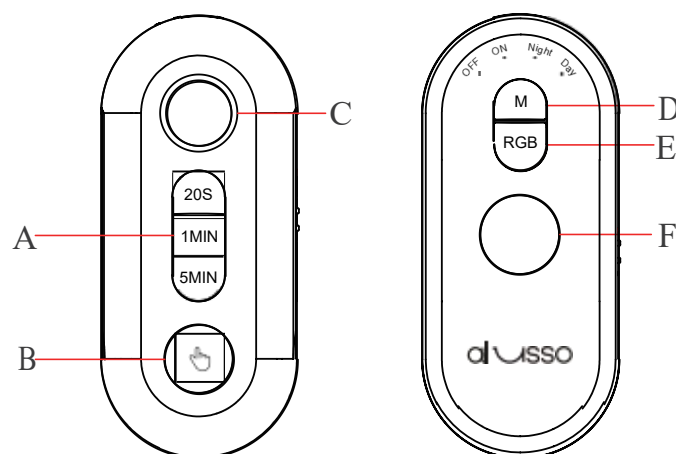
- Do not dispose of electrical and electronic equipment as domestic waste.



mm Made in China

Manufactured by:
NINGBO SILIANG LIGHTING TECHNOLOGY CO.,LTD
#138,South RD.of Jishi,Haishu,Ningbo,315171,China

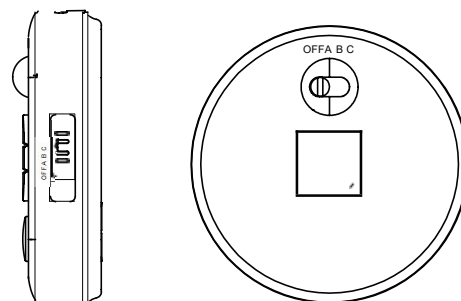
Operation Guide



Letter	Name
A	Time Button · 20S/1MIN/5MIN-Choose the duration time you want. Only work in AUTO Mode
B	CCT/Brightness Button · Short press to switch the color temperature of 3000K/4000K/6000K. · Long press for stepless dimming (10%-100%).
C	PIR Motion Sensor
D	Mode Button · Short press to choose the mode you want OFF -Turn off the light. ON -The light will always stay on. AUTO (Day) mode -Automatically lights up in both daytime and dark environment, automatically turns off after about 20S/1min/5min if no motions detected (use remote controller to choose the mode and set the duration time). AUTO (Night) mode -Only automatically lights up in the dark environment, automatically turns off after about 20S/1min/5min if no motion is detected (use remote controller to set the duration time).
E	RGB Button · 7 colors light constitutes 9 lighting mode: Short Press the button to choose light color, the sequence is RED-YELLOW-LIGHT GREEN-GREEN-CYAN-BLUE-PURPLE-7 COLOR BREATHING GRADIENT-7 COLOR FLASHING

Group Control

Slide to the same letter means the fixtures are made in the same group. Slide remote control button to the same letter, for example A, then you are able to control that group of lights at the same time.



Warranty

Scan the QR codes and be our member, You'll get:

1. Get 30% OFF for first order

Message us the keyword [code] and get your special discount!

2. Extend warranty for 1 year

Replacement warranty is promised during the warranty period. Please contact support@alussolighting.com to apply for Replacement Warranty, and the information below is required:

Email subject: Replacement Warranty

Details of Defective item:Purchase platform + order number + product photos (incl. lamp printing)



Alusso APP



A+ Family



Instagram



Facebook

FCC Statement

This equipment has been tested and found to comply with the limits for a Class B digital device, pursuant to part 15 of the FCC Rules.

These limits are designed to provide reasonable protection against harmful interference in a residential installation. This equipment generates, uses and can radiate radio frequency energy and, if not installed and used in accordance with the instructions, may cause harmful interference to radio communications. However, there is no guarantee that interference will not occur in a particular installation. If this equipment does cause harmful interference to radio or television reception, which can be determined by turning the equipment off and on, the user is encouraged to try to correct the interference by one or more of the following measures:

- Reorient or relocate the receiving antenna.
- Increase the separation between the equipment and receiver.
- Connect the equipment into an outlet on a circuit different from that to which the receiver is connected.
- Consult the dealer or an experienced radio/TV technician for help.

Caution: Any changes or modifications to this device not explicitly approved by manufacturer could void your authority to operate this equipment.

This device complies with part 15 of the FCC Rules. Operation is subject to the following two conditions: (1) This device may not cause harmful interference, and (2) this device must accept any interference received, including interference that may cause undesired operation.

RF Exposure Information

The device has been evaluated to meet general RF exposure requirement.

The device can be used in portable exposure condition, compliance with exposure requirements.