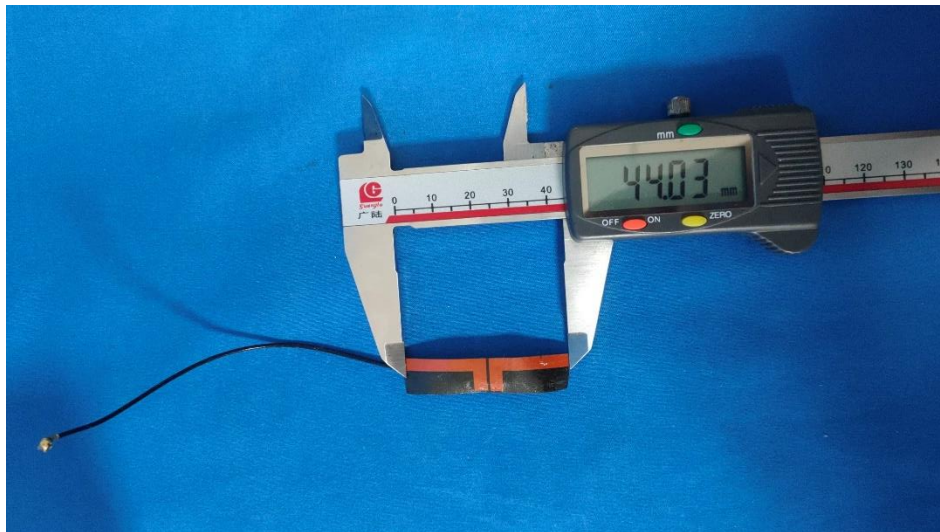
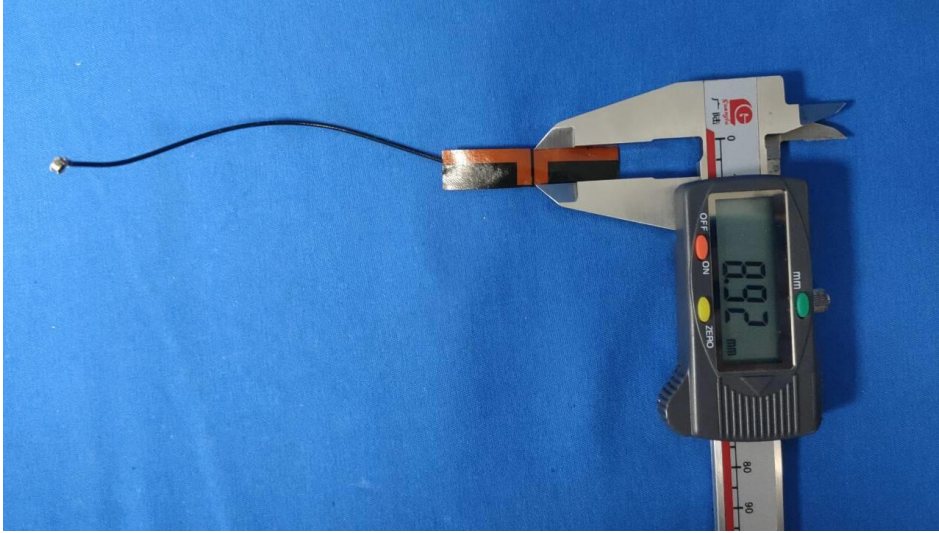


1. Antenna Description:

Antenna type	PIFA Antenna
Model	MaxiMiner Paw Edition
Frequency range	2400-2500MHz
Manufacturer	Maxi Innovation Limited
Address	RM 06, 13A/F SOUTH TOWER WOLD FINANCE CTR HARBOUR CITY 17 CONTON RD TST HONG KONG, China
ANT Peak Gain	1.13 dBi

2. Antenna Photo:





3. Test Equipment & Conditions

3.1 Test instrument

VSWR is tested using Agilent E5071B connected to a hand mechanism, and the status is free space.

3.2 Test environment and methods

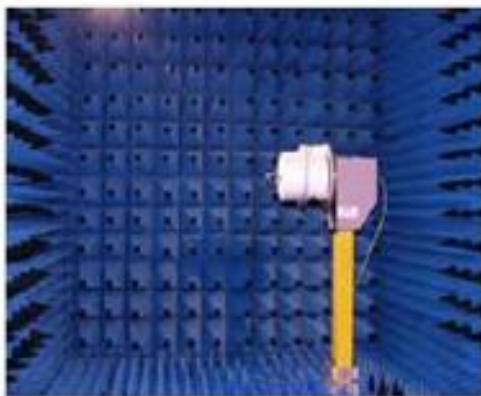
Dark room specifications: ETS-743

TD-SCDMA test equipment: StarPoint SP6010/Agilent 8960

LTE-TDD/FDD-SCDMA test equipment: StarPoint SP8011/CMW500

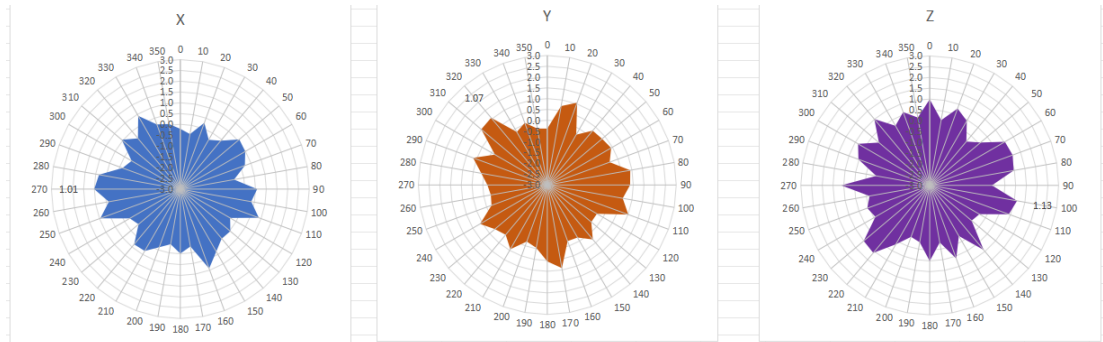
WCDMA/GSM/CDMA test equipment: Agilent 8960

Passive efficiency testing equipment: Agilent Technologies E5071B

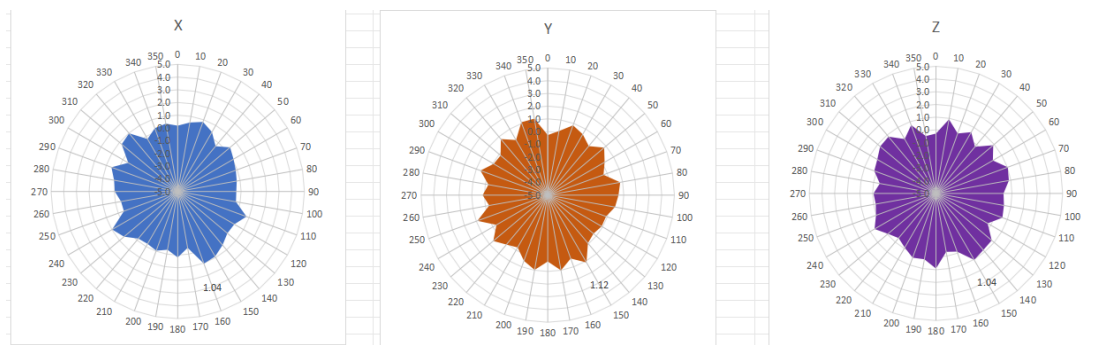


4 . Antenna Radiation Pattern

2400MHz



2450MHz



2500MHz

