

USER MANUAL

SMART SCENT DIFFUSER

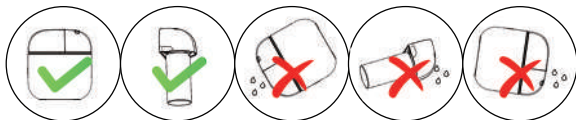
Please read this manual completely before using this product



SAFETY USE

- 1, Using the fragrance oils provided by us. Do not add water or alcohol.
- 2, Do not operate the device without scent oil for extended periods.
- 3, Don't fill liquid inside the device during transportation.
- 4, Don't put any obstructions in front of the mist outlet
- 5, Must tighten the bottle
- 6, Do not disassemble or modify the internal components of the device .
- 7, Do not use overloaded power main and sockets.
- 8, Do not use damaged power wires or plugs.
- 9, Keep away device from children & pets.
- 10, Do not immerse the device in water or expose it to water sprays.
- 11, Keep the device away from flammable or explosive materials.
- 12, Always keep the device upright during when the oils are in the device bottle.

PRECAUTIONS

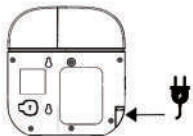
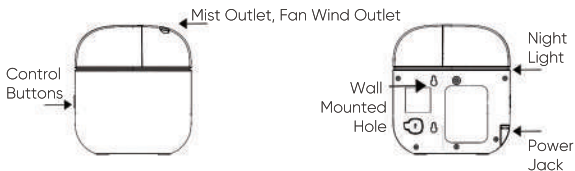


PARAMETERS

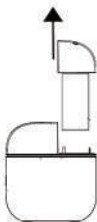
Material	Plastic PP
Dimensions	165*72*183 mm
Net Weight	0.65 ±0.1kg
Input Voltage	110- 240 AC
Output Voltage	12V DC 1A
Power	5.6 ± 1 W
Capacity	180ml (max. put 150ml oils)
Noise Level	38 ± 2 DBA
Coverage	Maximum 1000 cubic Meters
Oil Consumption	Maximum 2 ± 0.1 ml
Installation Way	Desktop / Wall mounted

Remark: the oil consumption is only for reference, cause we test with the highest scent intensity setting, use our own oils, room is 30 degree, 45% air humidity.

OPERATION INSTRUCTIONS



1 Plug in the power plug that we provide



2 Pull out the essential oil bottle upwards, rotate the bottle, pour in the essential oil, and then screw the bottle back tightly.



3 If need to make it wall mounted, then check if the wall is smooth, stick the wall-mounting plate on it and squeeze out air bubbles. Hang the device after 24 hours. If the wall isn't smooth, stick the provided positioning paper on wall, drill two 4.5mm-diameter holes, remove the paper. **Then, insert green rubber pellets into the holes and drive screws into the pellets. Hang the device with the screws.**

BLUETOOTH CONTROL INSTRUCTIONS

- 1 Download the "SCENTLIFE" (pic 1) APP in Google Play or APPLE STORE.
- 2 Allow all the permissions and choose your country
- 3 Connect the machine power supply .
- 4 Click Bluetooth (pic 3), input password 6666, choose the machine coming out (pic 4).
- 5 Scan the QR CODE sticker that's attached on machine, to choose the machine model (pic 5), or directly choose the model



pic 1



pic 3

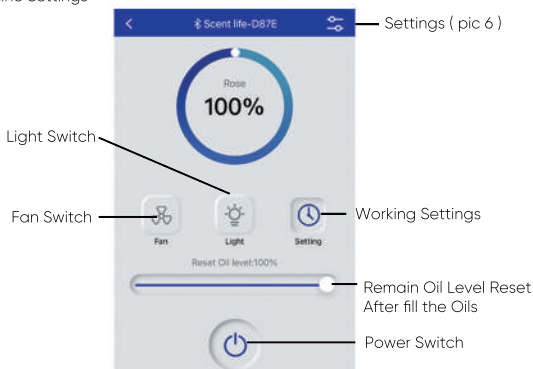


pic 4



pic 5

5 Machine Settings



Modify Machine Name to Application , or lovely name. Like " Living Room" "Pro"

Modify Machine Model to

Modify Scent Flavor



(pic 6)

6 Working Settings

Working mode switch

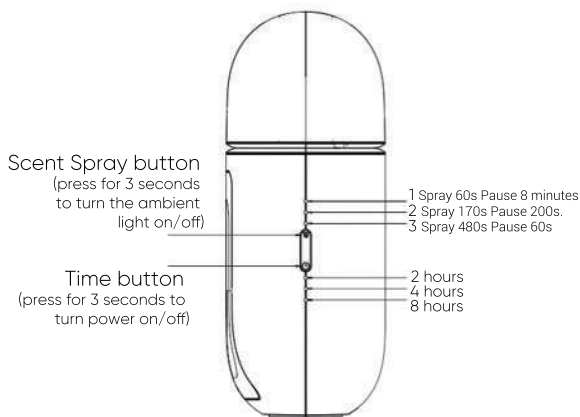
Working days selection

Slide up and down to adjust the working time

Slide left and right to adjust the spray time and the non-stray time, until to find the scent intensity is just right !

- Make sure to start work is earlier than the end time;
- The working time should not exceed 24 hours; if it exceeds, need to set Mode Two from 0:01.

MANUAL CONTROL INSTRUCTIONS



STEP 1 After connect the adater, machine is on.

STEP 2 Press the SCENT BUTTON to choose the scent intensity level 1/2/3 to let machine start.

STEP 3 Press the Timer BUTTON to choose the working 2/4/8hours. After working 2/4/8 hour, machine will stop working.

STEP 4 Long press SCENT & TIMER buttons to be back to Factory settings (scent level 1, works 2 hours)

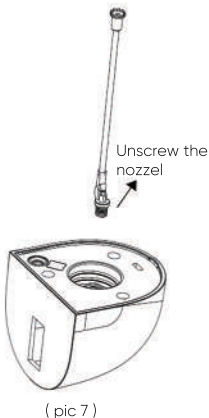
MAINTENANCE AND CLEANING

In below 3 cases , need to clean the device.

- * If don't use for a long time, please clean the machine after final use.
- * Every two months clean one time.
- * Before change to another scented oil flavor, clean it first

Cleaning steps as below:

- 1, Put the alcohol into the empty bottle
- 2, Unscrew out the nozzle (pic 7), use water to clean the nozzle hole (pic 8)



- 3, Assemble back the nozzle
- 4, Connect power ,set the strongest intensity, turn on the device for 5 mins
- 5, Turn off it and finally pour away the alcohol.

FCC WARNING

This device complies with part 15 of the FCC Rules. Operation is subject to the following two conditions: (1) this device may not cause harmful interference, and (2) this device must accept any interference received, including interference that may cause undesired operation.

Any changes or modifications not expressly approved by the party responsible for compliance could void the user's authority to operate the equipment.

NOTE: This equipment has been tested and found to comply with the limits for a Class B digital device, pursuant to Part 15 of the FCC Rules. These limits are designed to provide reasonable protection against harmful interference in a residential installation. This equipment generates, uses and can radiate radio frequency energy and, if not installed and used in accordance with the instructions, may cause harmful interference to radio communications. However, there is no guarantee that interference will not occur in a particular installation.

If this equipment does cause harmful interference to radio or television reception, which can be determined by turning the equipment off and on, the user is encouraged to try to correct the interference by one or more of the following measures:

- Reorient or relocate the receiving antenna.
- Increase the separation between the equipment and receiver.
- Connect the equipment into an outlet on a circuit different from that to which the receiver is connected.
- Consult the dealer or an experienced radio/TV technician for help.

To maintain compliance with FCC's RF Exposure guidelines, This equipment should be installed and operated with minimum distance between 20cm the radiator your body: Use only the supplied antenna.