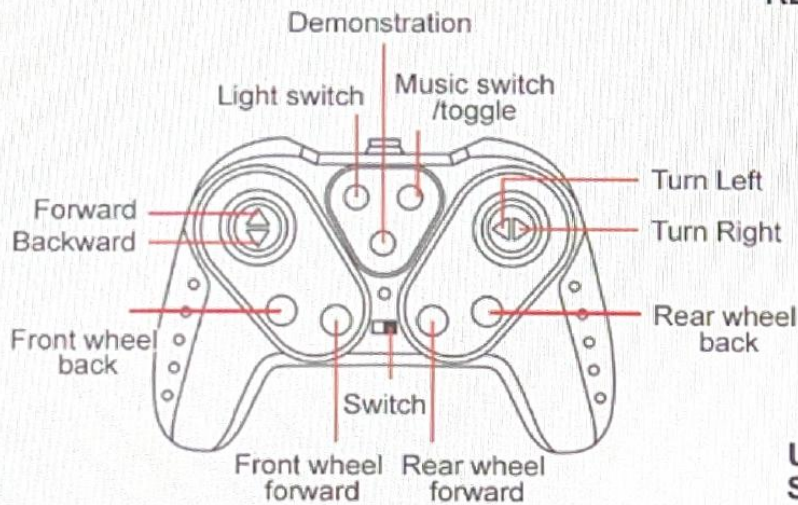
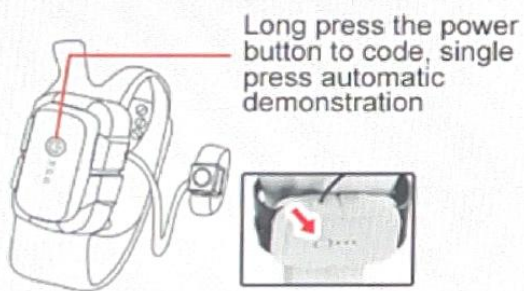


REMOTE CONTROL



**USE 2X1.5V“AA”
SIZE BATTERIES
(NOT INCLUDED)**

WATCH REMOTE CONTROL



Long press the power button to code, single press automatic demonstration

Finger keys forward, front wheel back
Finger keys back, front wheel forward
Finger key left, back wheel forward
Finger keys to the right, back wheel forward
Press the finger key light on/off



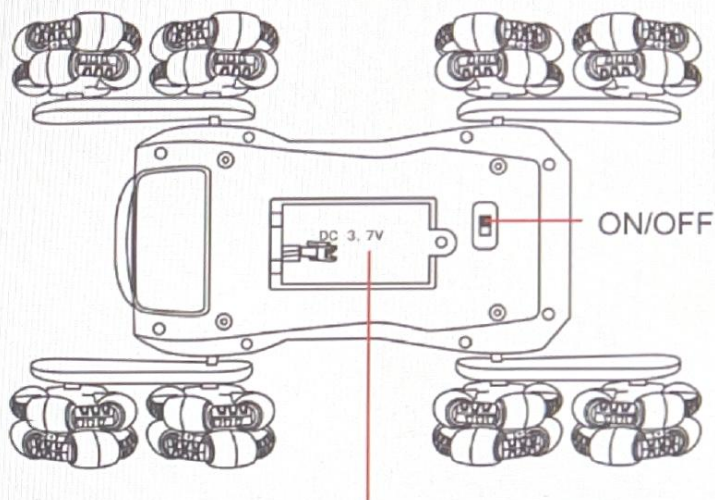
**USE 2X1.5V“AAA” SIZE
BATTERIES (NOT INCLUDED)**



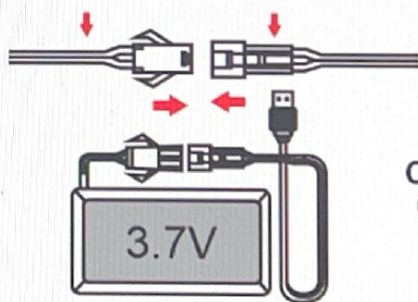
Watch forward tilt
- Stunt dog forward
Watch back tilt
- Stunt dog back



Watch left. - Stunt dog left
Watch right. - Stunt dog right



**USE 3.7 V RECHARGEABLE
BATTERY (INCLUDED)**



**CONNECT THE BATTERY
CABLE TO THE USB CABLE**
(Connect the battery in the correct
way, and the charging time
is about 3 hours)

FCC Statement

This equipment has been tested and found to comply with the limits for a Class B digital device, pursuant to Part 15 of the FCC Rules. These limits are designed to provide reasonable protection against harmful interference in a residential installation. This equipment generates and can radiate radio frequency energy and, if not installed and used in accordance with the instructions, may cause harmful interference to radio communications. However, there is no guarantee that interference will not occur in a particular installation. If this equipment does cause harmful interference to radio or television reception, which can be determined by turning the equipment off and on, the user is encouraged to try to correct the interference by one or more of the following measures:

- Reorient or relocate the receiving antenna.
- Increase the separation between the equipment and receiver.
- Connect the equipment into an outlet on a circuit different from that to which the receiver is connected.
- Consult the dealer or an experienced radio/TV technician for help.

This device complies with part 15 of the FCC Rules. Operation is subject to the following two conditions: (1) This device may not cause harmful interference, and (2) this device must accept any interference received, including interference that may cause undesired operation.

Changes or modifications not expressly approved by the party responsible for compliance could void the user's authority to operate the equipment.

The device has been evaluated to meet general RF exposure requirement. The device can be used in portable exposure condition without restriction.