



# Smart Voice Panel

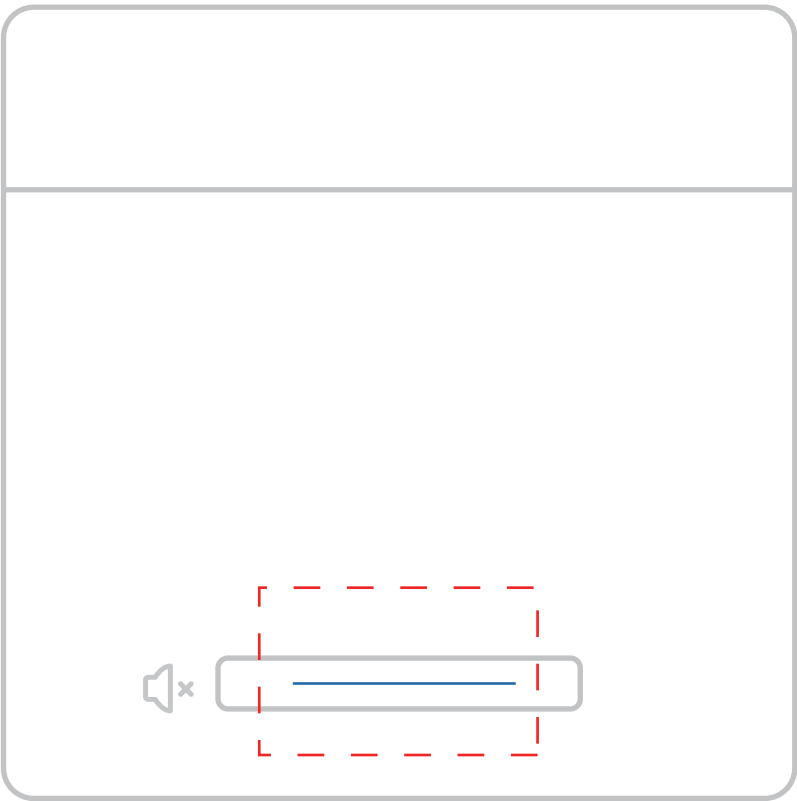
User Manual

# Specifications

Product Name:	Smart Voice Panel
Model:	BLM-OV1
Networking Mode:	BLE Mesh 5.0
Mesh Forwarding:	Supported
WIFI Standard:	2.4GHz 802.11b/g/n
Communication Distance:	< 20m (affected by environment)
Working Voltage:	100-240V~, 50/60Hz
Rated Power:	2W
Product Size:	86X86X39mm
Package Size:	92X92X46mm
Product Weight:	145g
Package Weight:	170g
Working Environment:	0-40℃ 10%-90%RH (non-condensing)
Colors:	Black, White, Gray
Installation:	86-type wall-mounted
IR Remote Distance:	<10m (environment-dependent)
Supported IR Devices:	AC, TV, STB, IPTV, Projector
IR Learning Support:	TV, STB, IPTV, Projector
Welcome Message Length:	300 characters
Supported Languages:	English, Arabic, Thai, Japanese, Indonesian, Spanish, Korean, Vietnamese, Russian, Chinese, Cantonese

# Product Debugging

## 1.Indicator Light Status



White light fast breathing:  
BLE Mesh Provision mode

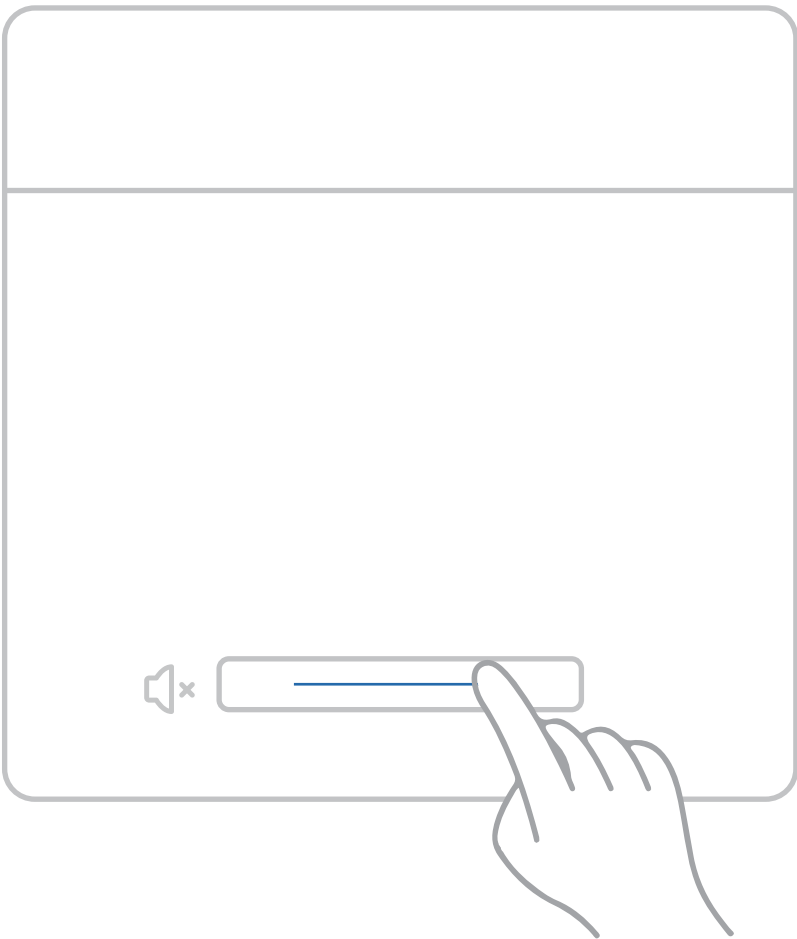
Blue light slow breathing:  
Non-mute wake-up state

Red light on:  
Mute wake-up state

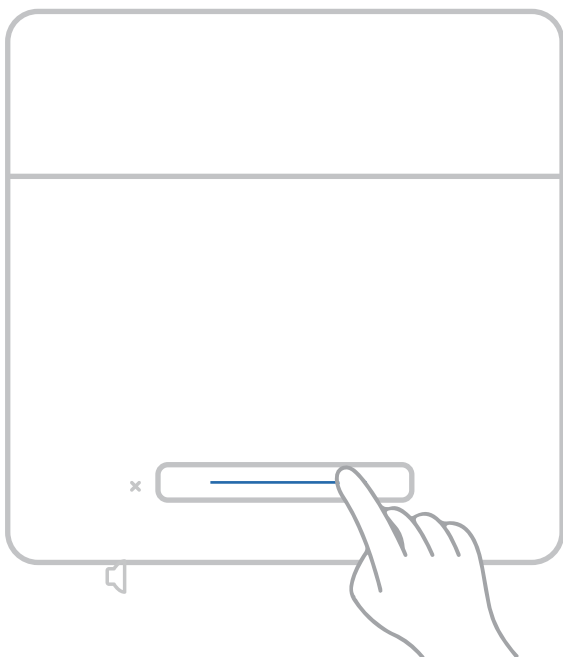
Light colorful changing:  
Firmware updating

## 2.Device Provision

Method 1: Within 2 minutes of power-on, wake up the device by voice and say "network pairing" to enter BLE Mesh provision mode.  
Method 2: Long-press the middle bottom button for over 4 seconds within 2 minutes of power-on to enter BLE Mesh provision mode.



### 3.Factory Reset



Follow step 2 to enter BLE Mesh Provision mode, then long-press 4 seconds for factory reset.

## 4.Wake up words selecting

Before using the device, please use the correct wake-up word to wake up the device. The wake-up word can be selected in the device details in the app's template settings. If the wake-up word is wrong, the device will not respond. If the voice control has been configured and the current wake-up word is unknown, you can press and hold for more than 4 seconds within 2 minutes after powering on to enter the provision mode. After device is provisioned, you can check the wake-up word in the device details page.

←

Edit device

Enable Card Insertion Reporting

Use this if the room has no smart card device.

When enabled, the gateway will simulate a card insertion event upon powering up (only one gateway can be activated).

Power-On Announcement

Plays a welcome message when the device is powered on.

Card Insertion Announcement

Plays a welcome message when a card is inserted into the smart card device.

Wake-up Word

Voice version: English General V5

HELLO-JENNY

YUMM

ALEXA

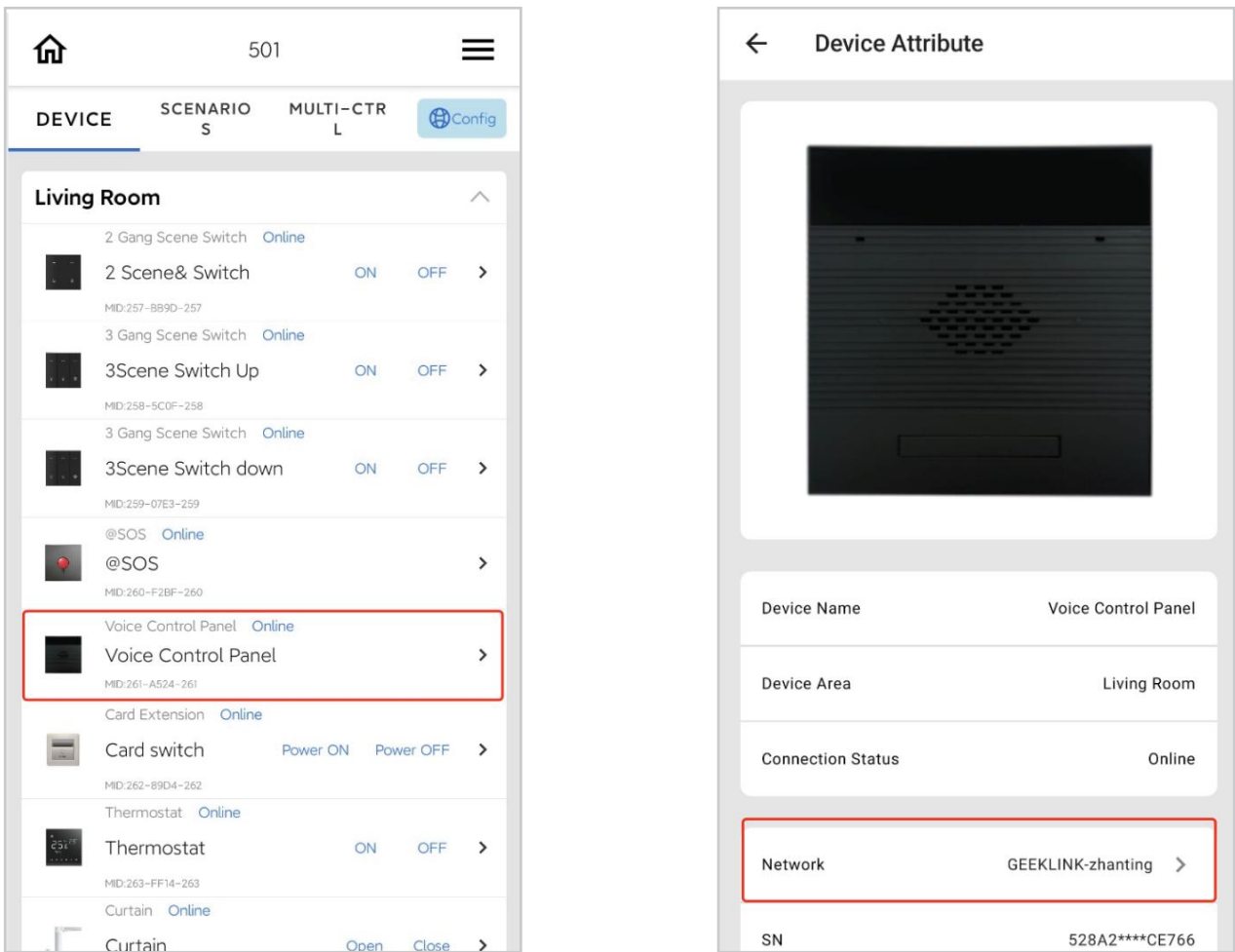
HELLO-NANA

HELLO-EWA

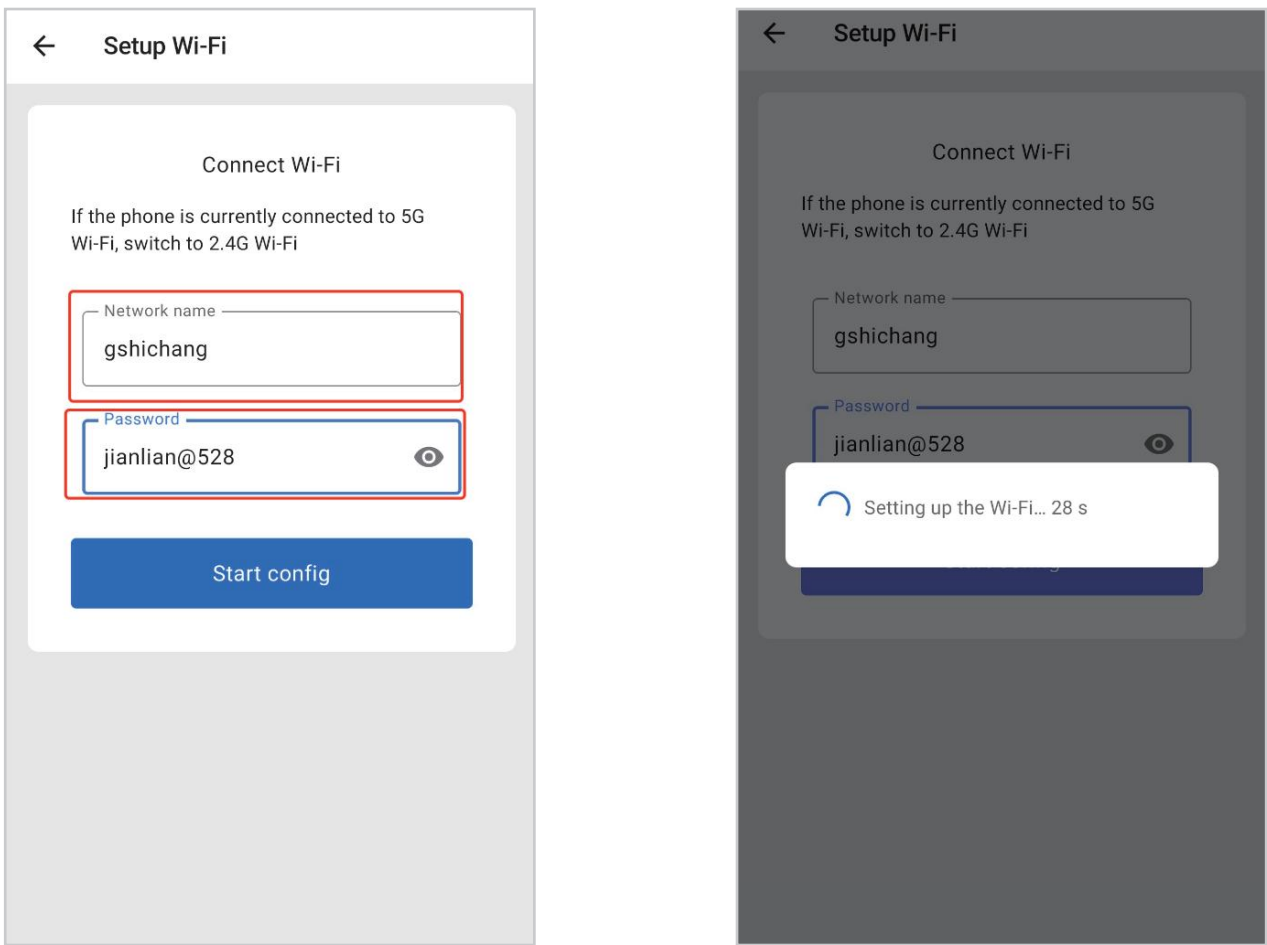
## 5. Network Settings

(1) In the APP's device page, when the device shows "Online", tap the device to enter the device details page. Select the network (shows "Unset" if not configured, or the network name if set).

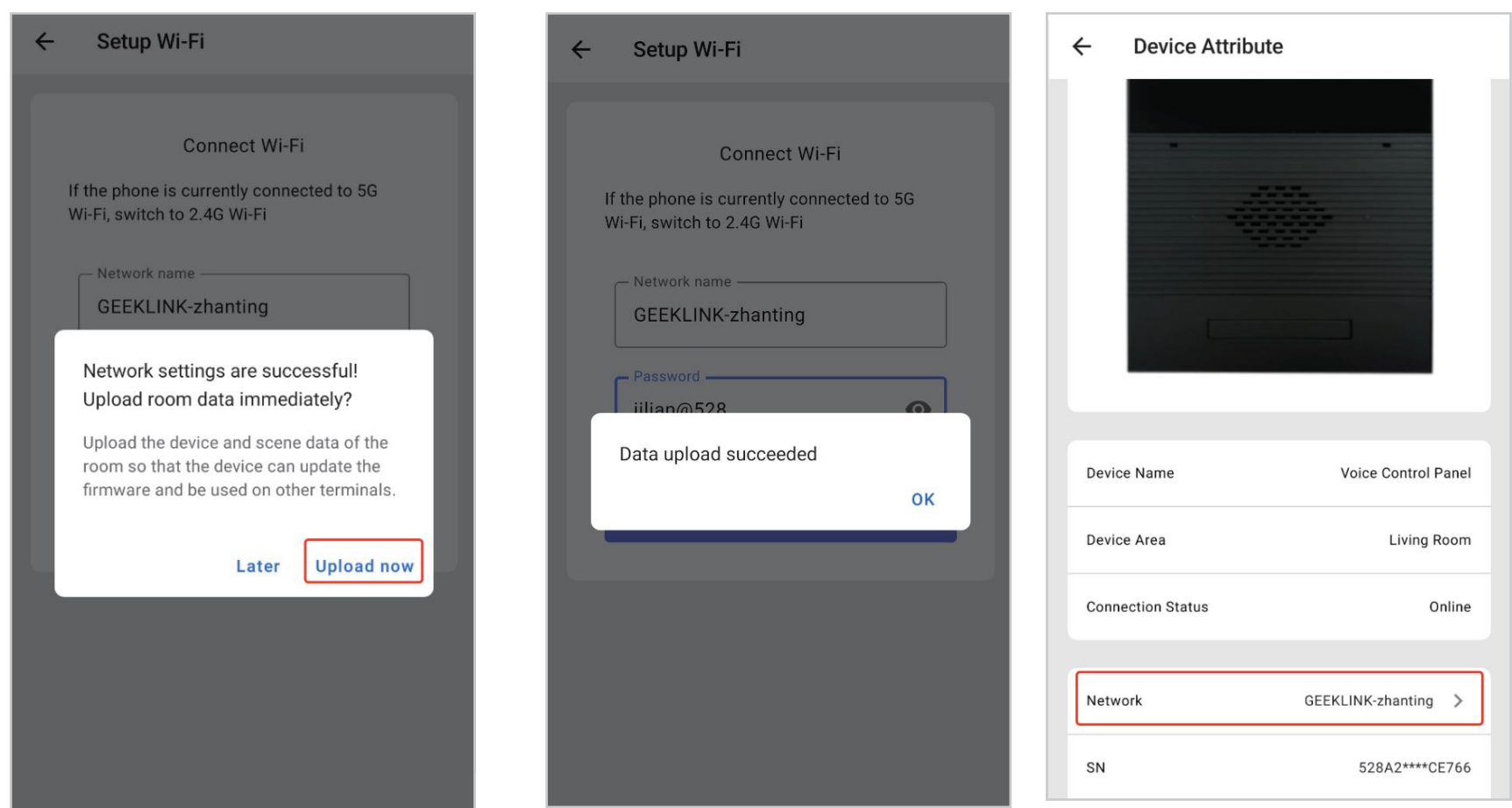
Note: The phone must connect to a 2.4G Hz Wi-Fi network in advance (5G not supported).



(2) On the Wi-Fi settings page, enter the Wi-Fi name and password, then tap "Start Configuration". The device will set the network and count down.

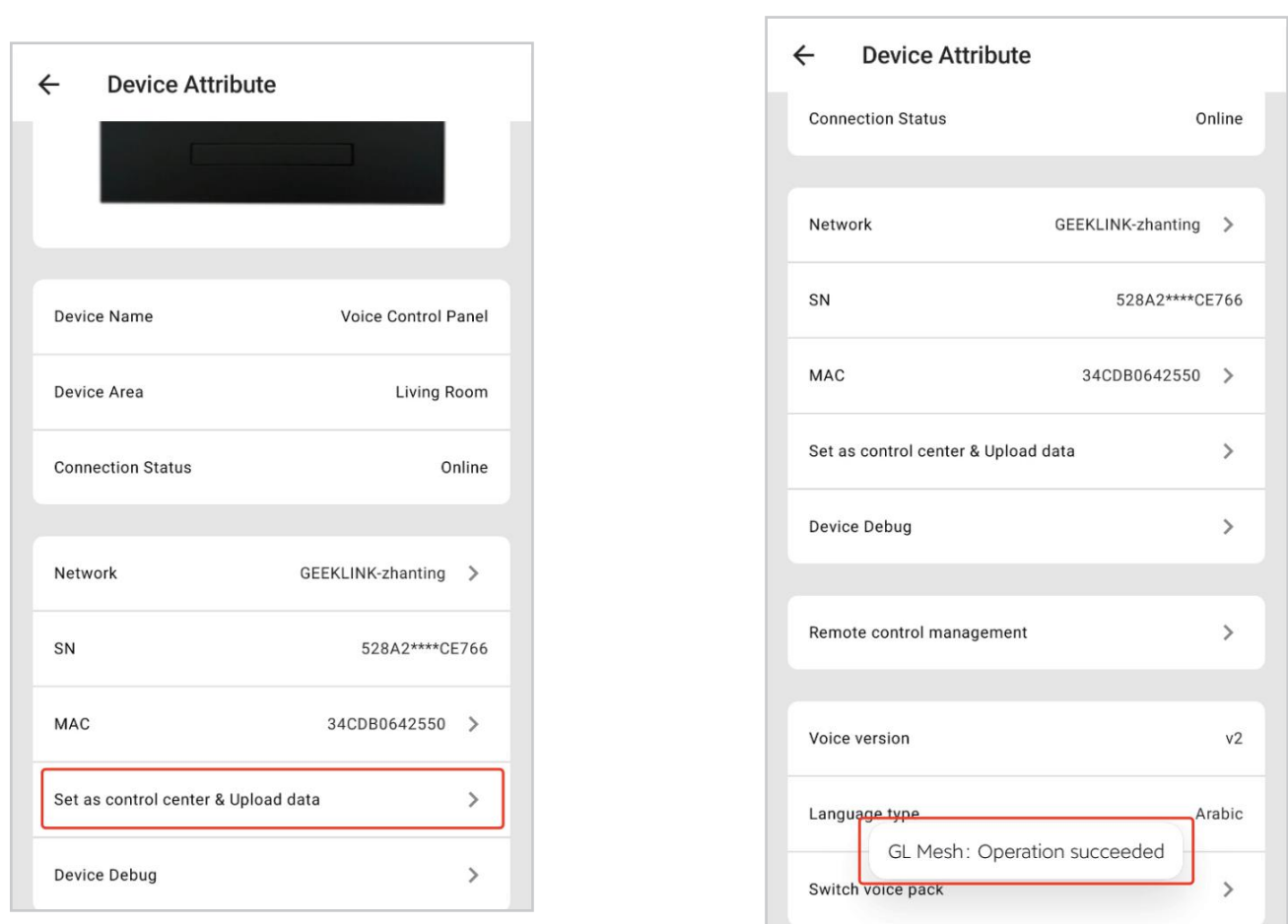


(3) After successful configuration, a pop-up will appear. Tap "Upload Now", and after confirming data upload, tap "OK". The network name will show in the device details page.



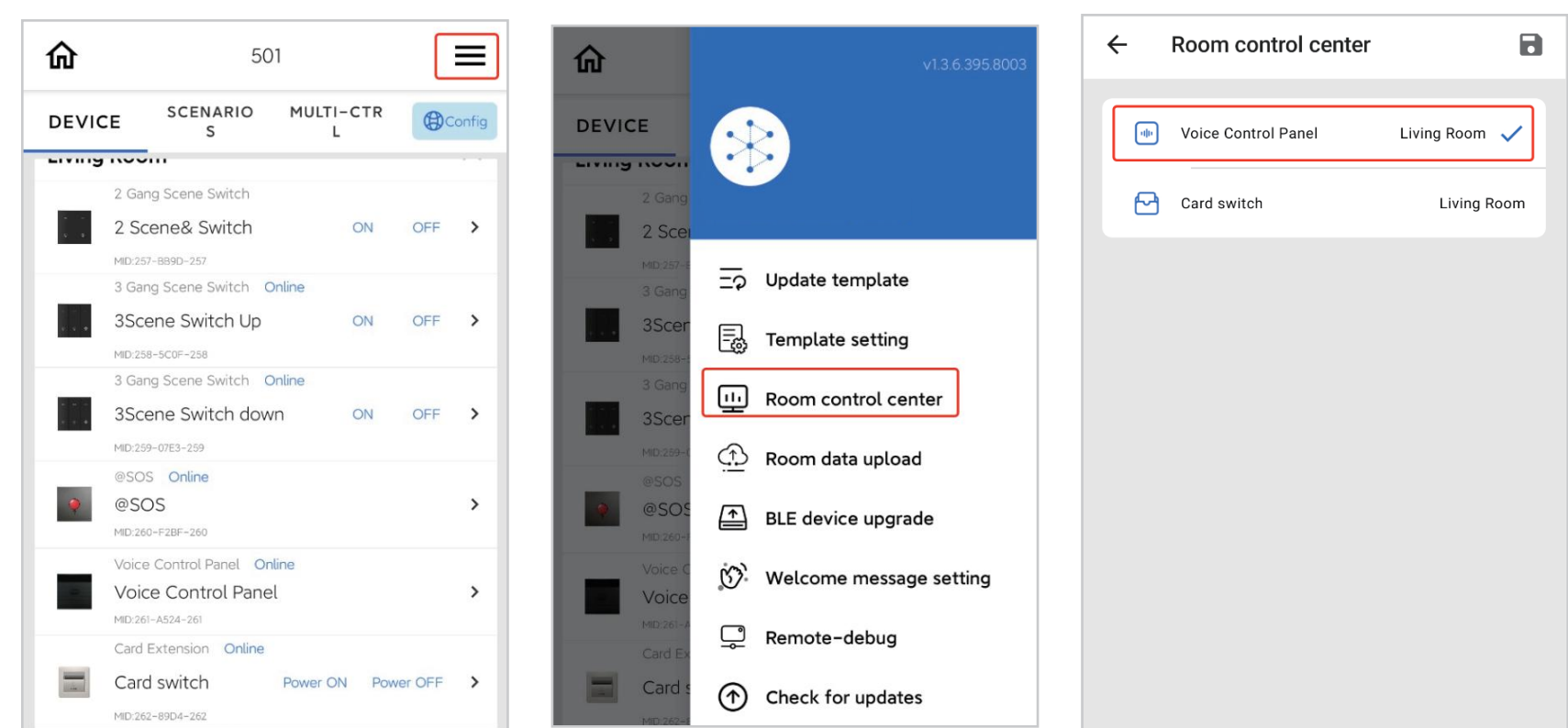
## 6. Central Control Setup

After the gateway host is networked, set the central control in the device properties page by tapping "Set as Central Control and Upload Data". Wait for the success prompt.



## 7. Central Control Check

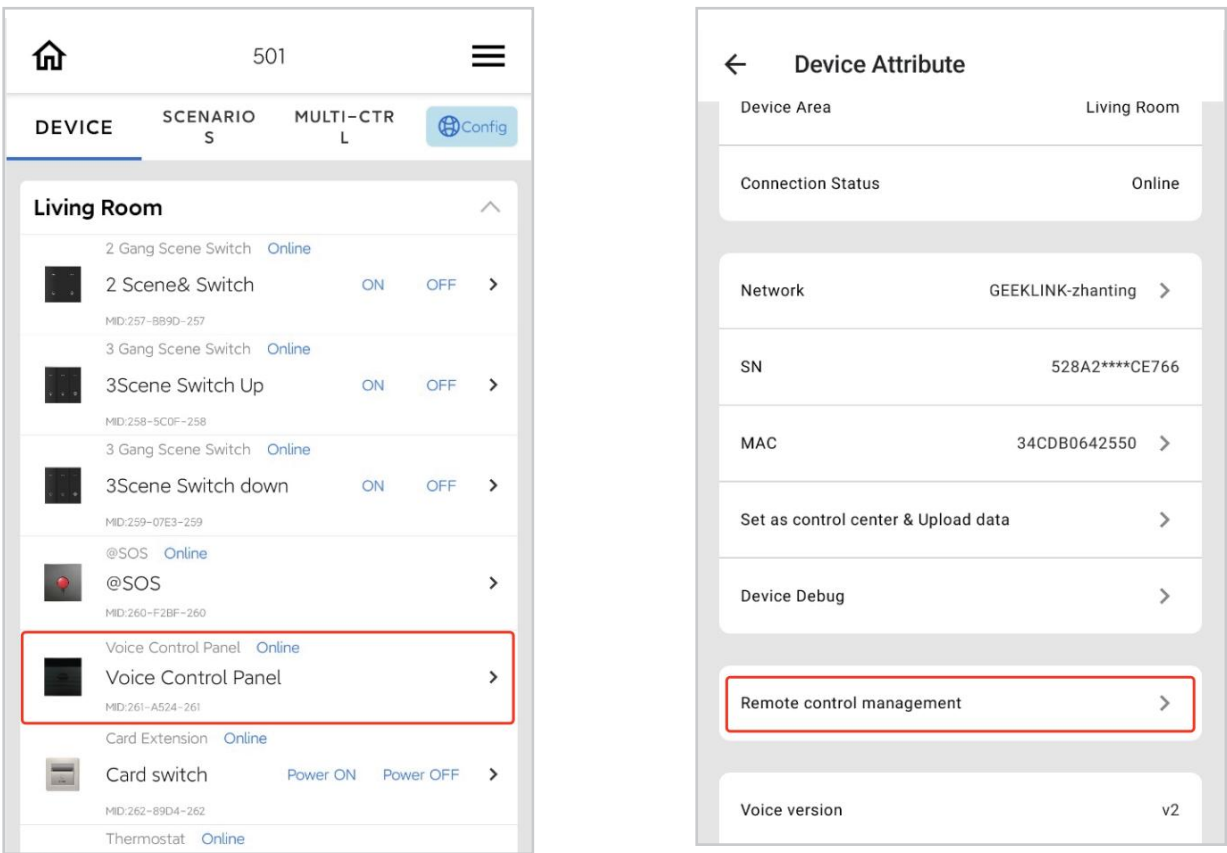
In the APP's device page, tap Settings (top right), then select "Room Control Center". Ensure the option is checked to confirm central control setup.



## 8. Infrared Remote Control Settings

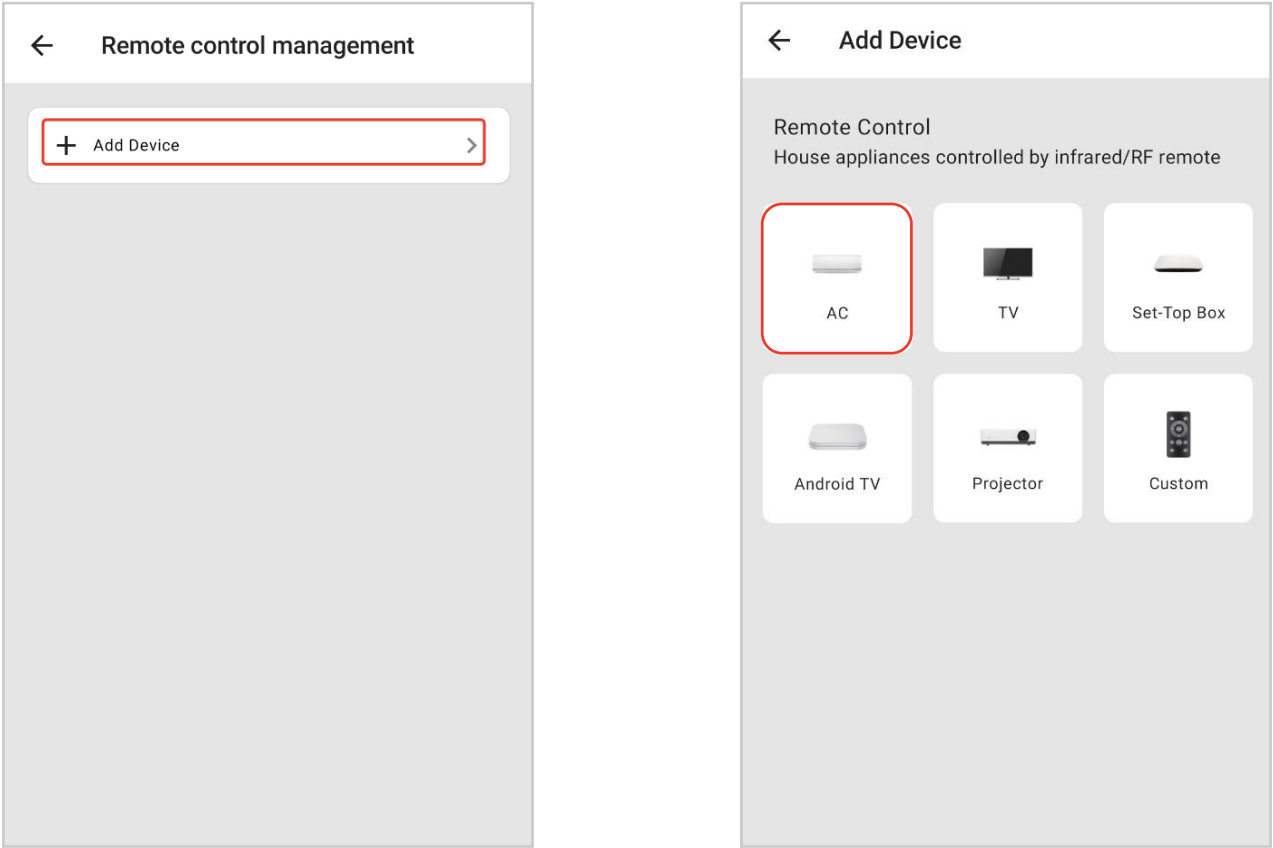
### IR Remote Addition - Cloud Code Library

(1) Go to the device properties page, tap "Remote Control Management".

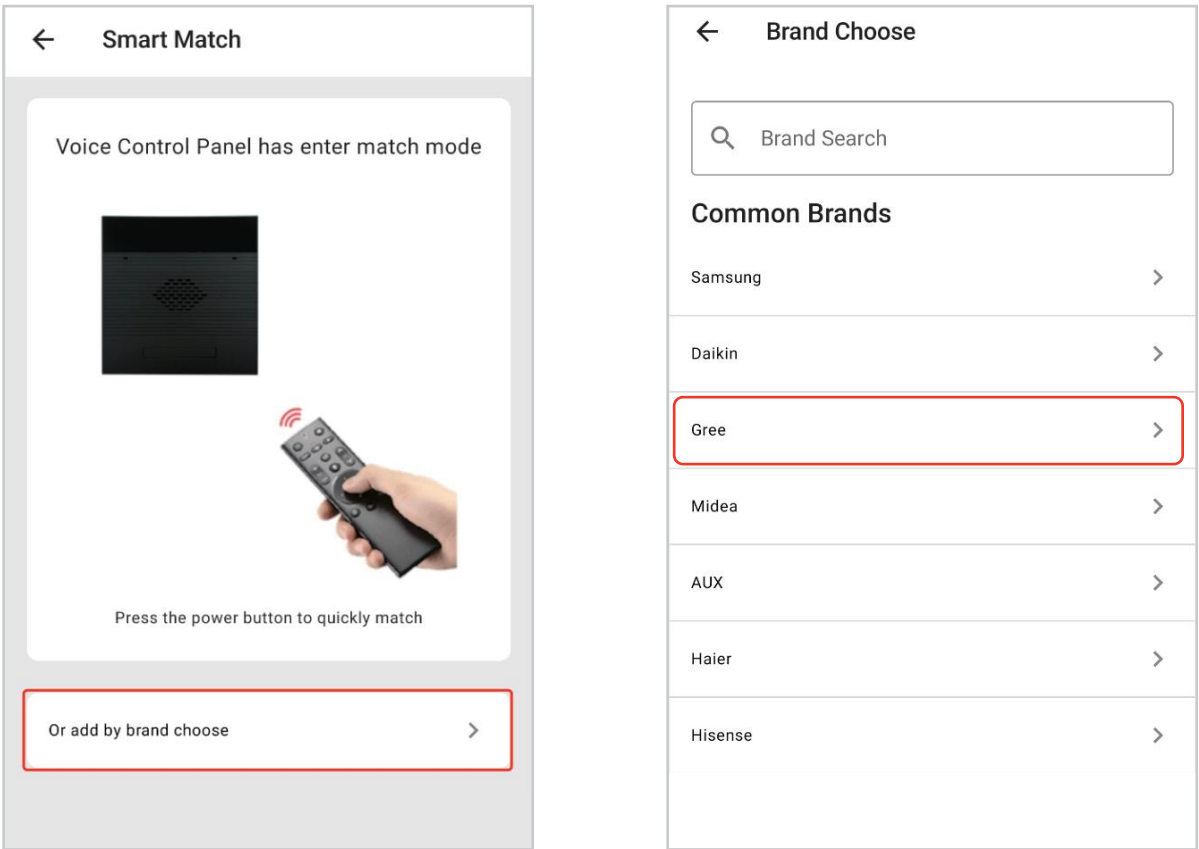




(2) Select "Add Device", then choose the corresponding IR device (e.g., Air Conditioner).

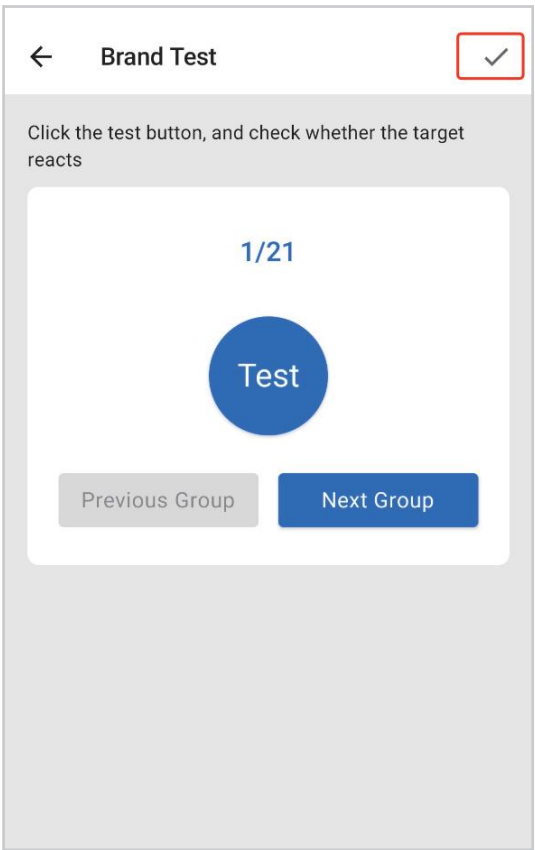


(3)In the smart matching page, you can press the ir remote on/off button for remote matching, or select "add by brand choose" to choose the brand (e.g., Gree).

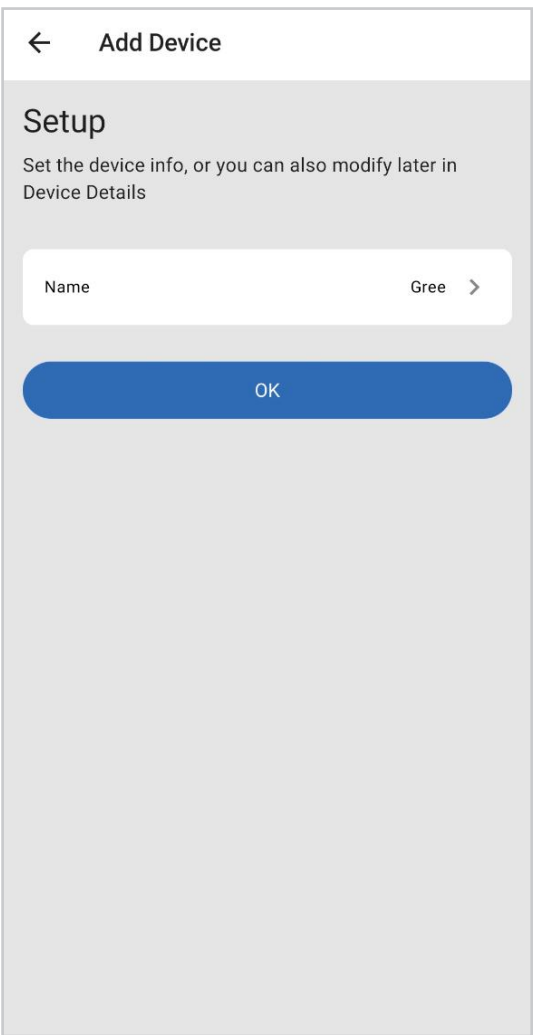




(4) In the brand test page, aim the device at the AC receiver, tap "Test" button. If the AC beeps, tap ✓ to add; else, tap "Next Group" until matched.

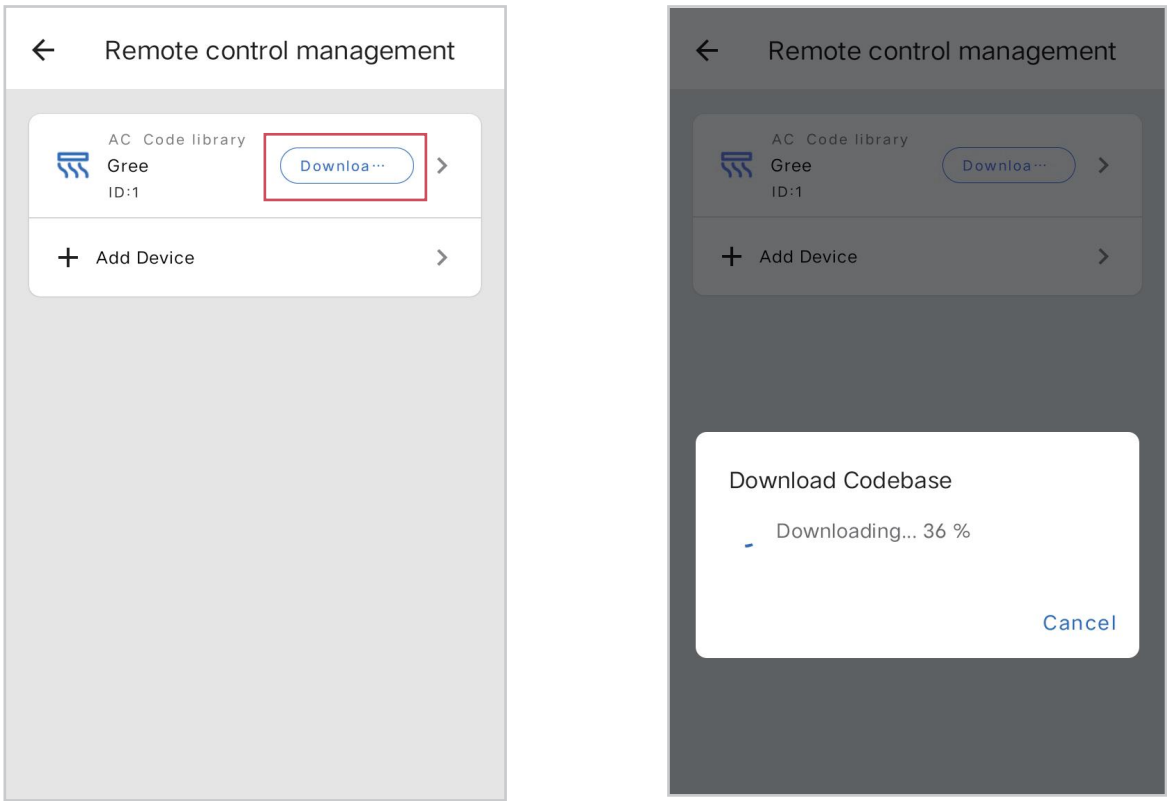


(5) Modify the name (optional) and confirm. The added ir remote will show in Remote Control Management page.



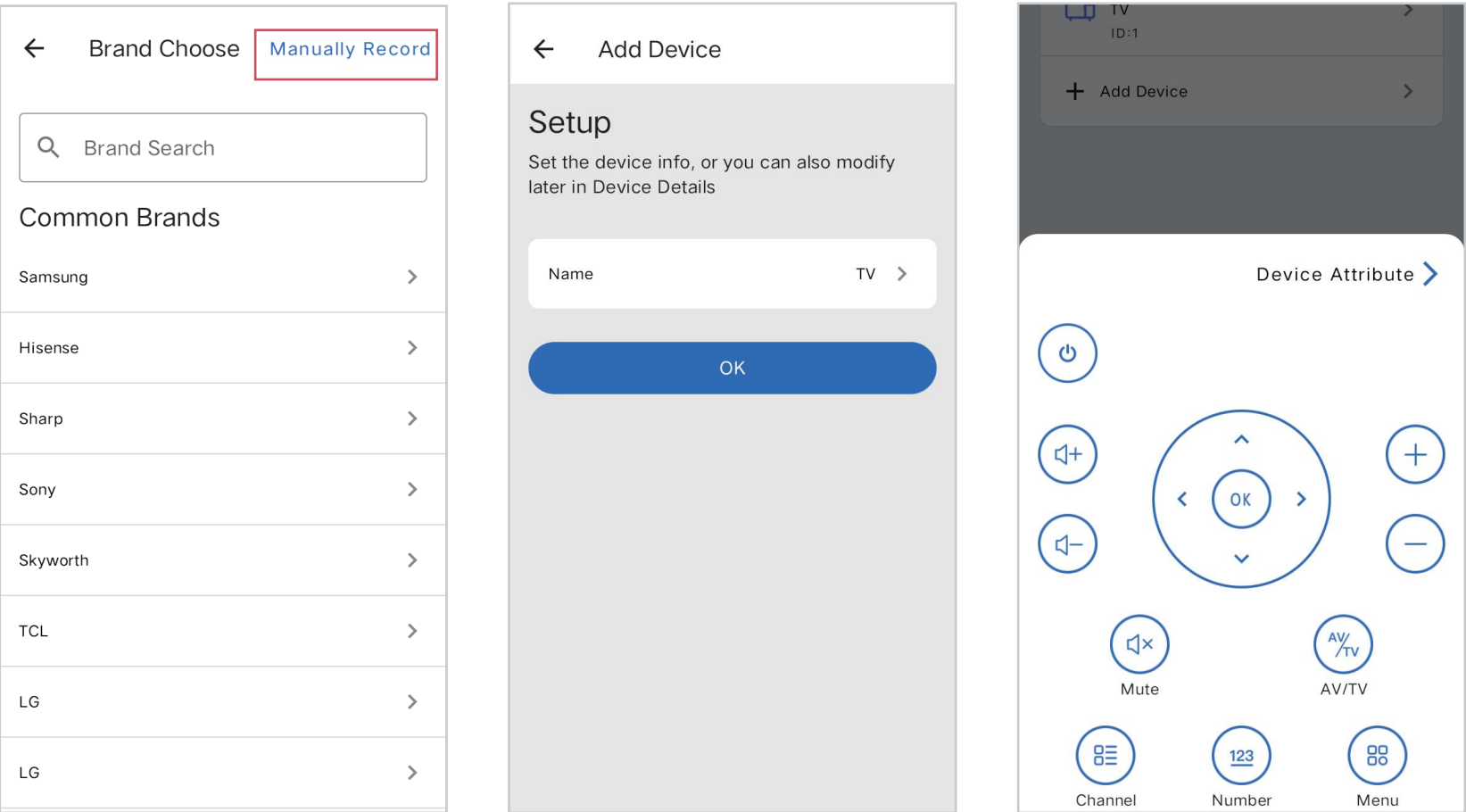
## IR Code Download

The data in the cloud code library can be downloaded to the device, so that it is not necessary to rely on the network when controlling. On the “Remote Control Management” page, click "Download Remote Codes" to start the download.



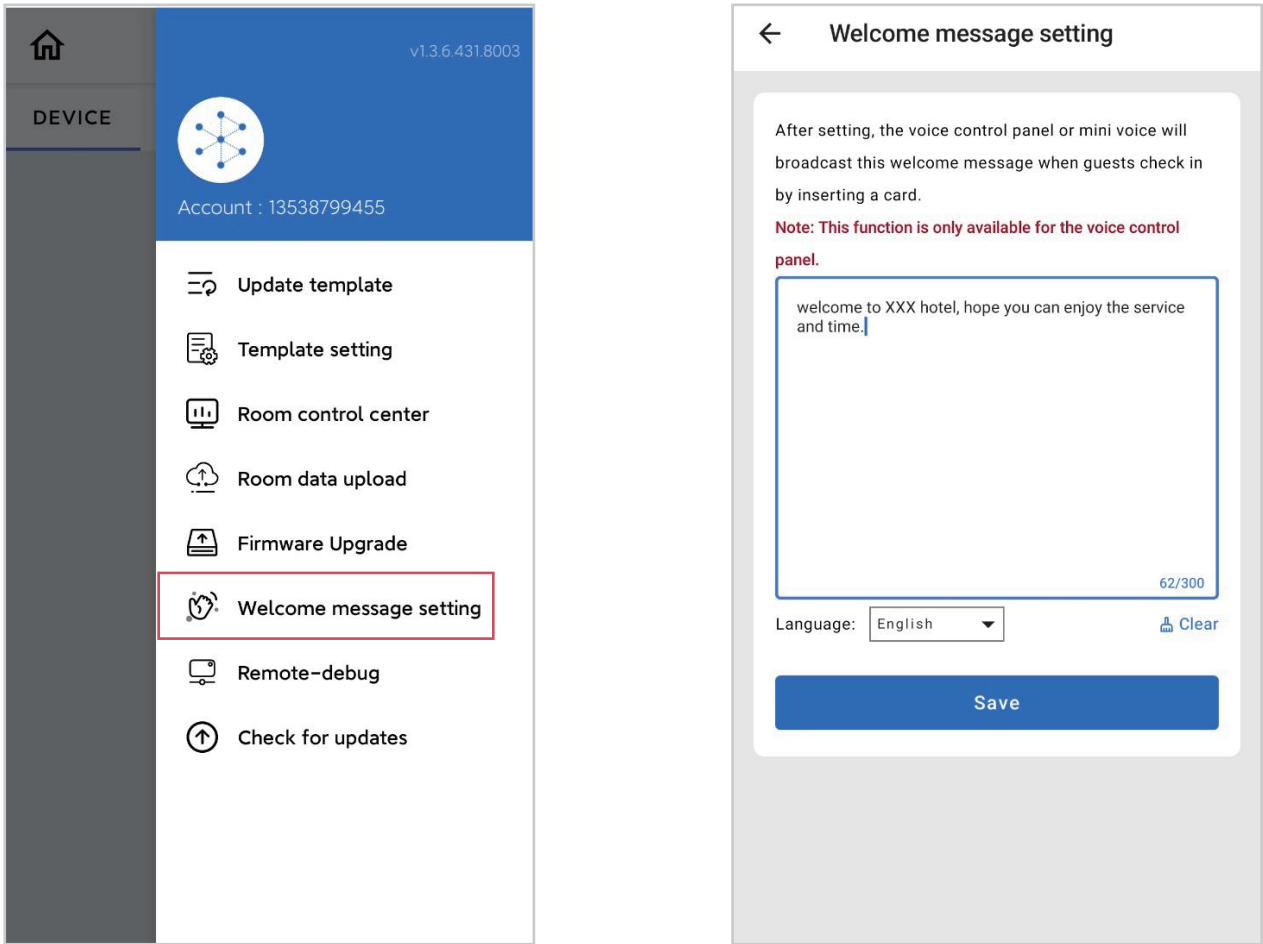
## IR Remote Addition - Learning Mode

For devices not available in the ir cloud code library, you can add remote control through the ir remote learning method. On the “Brand Choose” page, click "Manually Record" in the top - right corner, set the remote control name. After that, the remote control will be displayed on the “Remote Control Management” page. Click on the remote control to show the control interface, and click the button to control. If the button has not been learned, it will prompt you to use the remote control for learning. Once the learning is completed, you can control it.



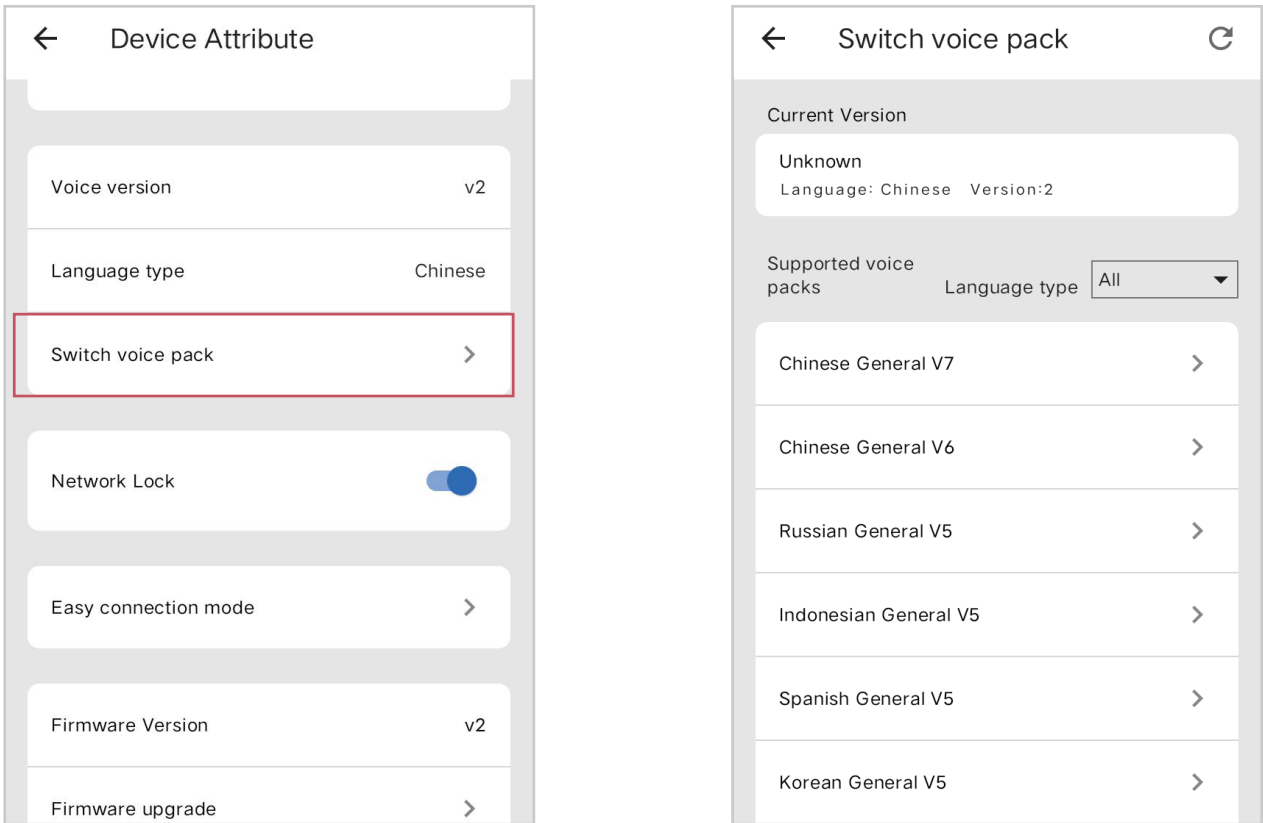
## 9.Welcome Message Setting

Customize welcome messages (e.g., brand greetings, festival wishes). The system will automatically broadcast when guests check in, enhancing the stay experience.Click the menu button in the top - right corner on the device page, and select "Welcome message setting" to make the settings.



## 10.Voice Pack Switching

Through the switching of voice packs, the upgrade of voice commands and the switching between different languages can be achieved. On the "Device Attribute" page, selecting "Switch voice pack" allows you to enter and select different voice packs for flashing.



# FCC Caution:

This device complies with part 15 of the FCC Rules. Operation is subject to the following two conditions: (1) This device may not cause harmful interference, and (2) this device must accept any interference received, including interference that may cause undesired operation. Any changes or modifications not expressly approved by the party responsible for compliance could void the user's authority to operate the equipment.

**NOTE:** This equipment has been tested and found to comply with the limits for a Class B digital device, pursuant to Part 15 of the FCC Rules . These limits are designed to provide reasonable protection against harmful interference in a residential installation. This equipment generates, uses and can radiate radio frequency energy and, if not installed and used in accordance with the instructions, may cause harmful interference to radio communications. However, there is no guarantee that interference will not occur in a particular installation. If this equipment does cause harmful interference to radio or television reception, which can be determined by turning the equipment off and on, the user is encouraged to try to correct the interference by one or more of the following measures:

- Reorient or relocate the receiving antenna.
- Increase the separation between the equipment and receiver.
- Connect the equipment into an outlet on a circuit different from that to which the receiver is connected.
- Consult the dealer or an experienced radio/TV technician for help.

The device has been evaluated to meet general RF exposure requirement. The device can be used in portable exposure condition without restriction.