



Smart Key-Card Power Switch

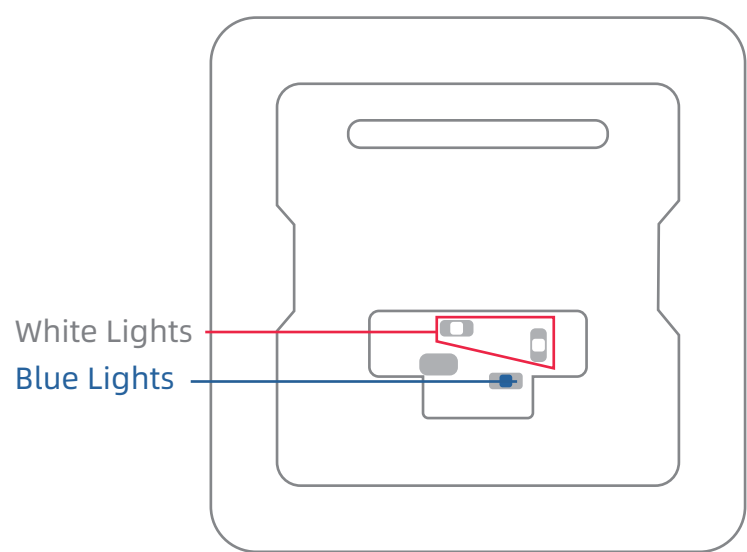
User Manual

Specifications

Product Name:	Smart Key-Card Power Switch
Product Model:	BLM-CK
Networking Mode:	BLE Mesh 5.0
Mesh Forwarding:	Supported
WIFI Standard:	2.4GHz 802.11b/g/n
Communication Distance:	< 20m (affected by environment)
Working Voltage:	100-240V~, 50/60Hz
Rated Current:	40A (resistive load)
Product Size:	86X86X47mm
Product Weight:	156g
Working Environment:	0-40°C 10%-90%RH (non-condensing)
Product Colors:	Gold , Black, Gray
Installation Method:	86-type in-wall installation
Wiring Method :	Connect live/neutral wires and output control wires according to back labels
High-frequency Cards:	13.56MHz ISO 14443A
Low-frequency Cards:	125kHz
Trigger Time after Insertion:	Within 1 second
Power-off Time after Removal:	38 seconds

Product Debugging

1.Indicator Light Status



White & Blue Lights

Blue light flashing: BLE Mesh provision mode

Blue light off : BLE Mesh provision successful

White light flashing: WiFi connecting (no card inserted)

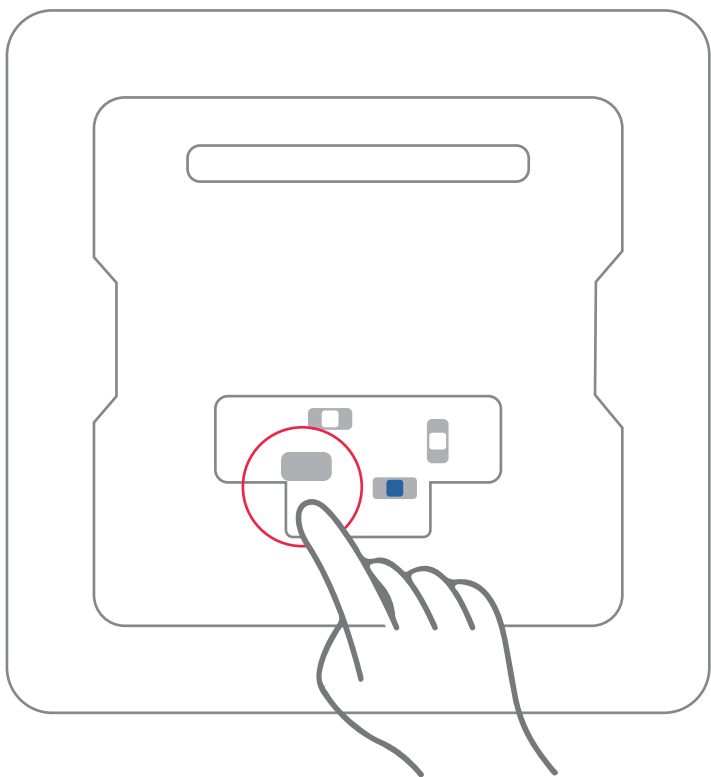
White light on: WiFi connected (no card inserted)

White light off : Card inserted

2.Device Provision

Double-click the button within 5 minutes of power-on.

When the blue indicator flashes, it enters BLE Mesh provision mode.



3.Device Linkage Functions

With dry contact door magnet:

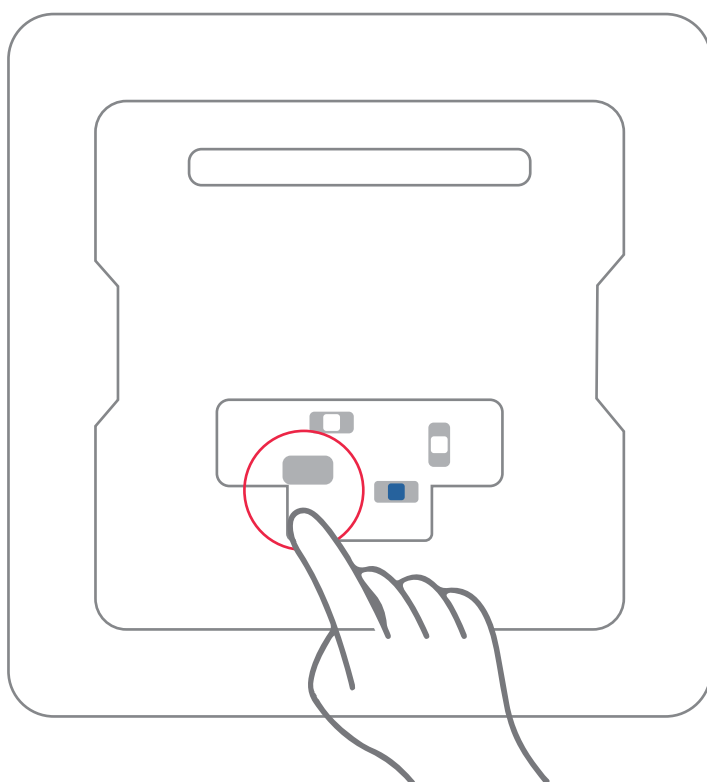
Enables light-on without card when door opens. The door magnet triggers temporary power supply to light fixtures. If a card is inserted, power stays on; if not, the system turns off the light and cuts power after 15 seconds. A voice device (if equipped) will broadcast a welcome message upon successful card insertion.

With dry contact motion sensor:

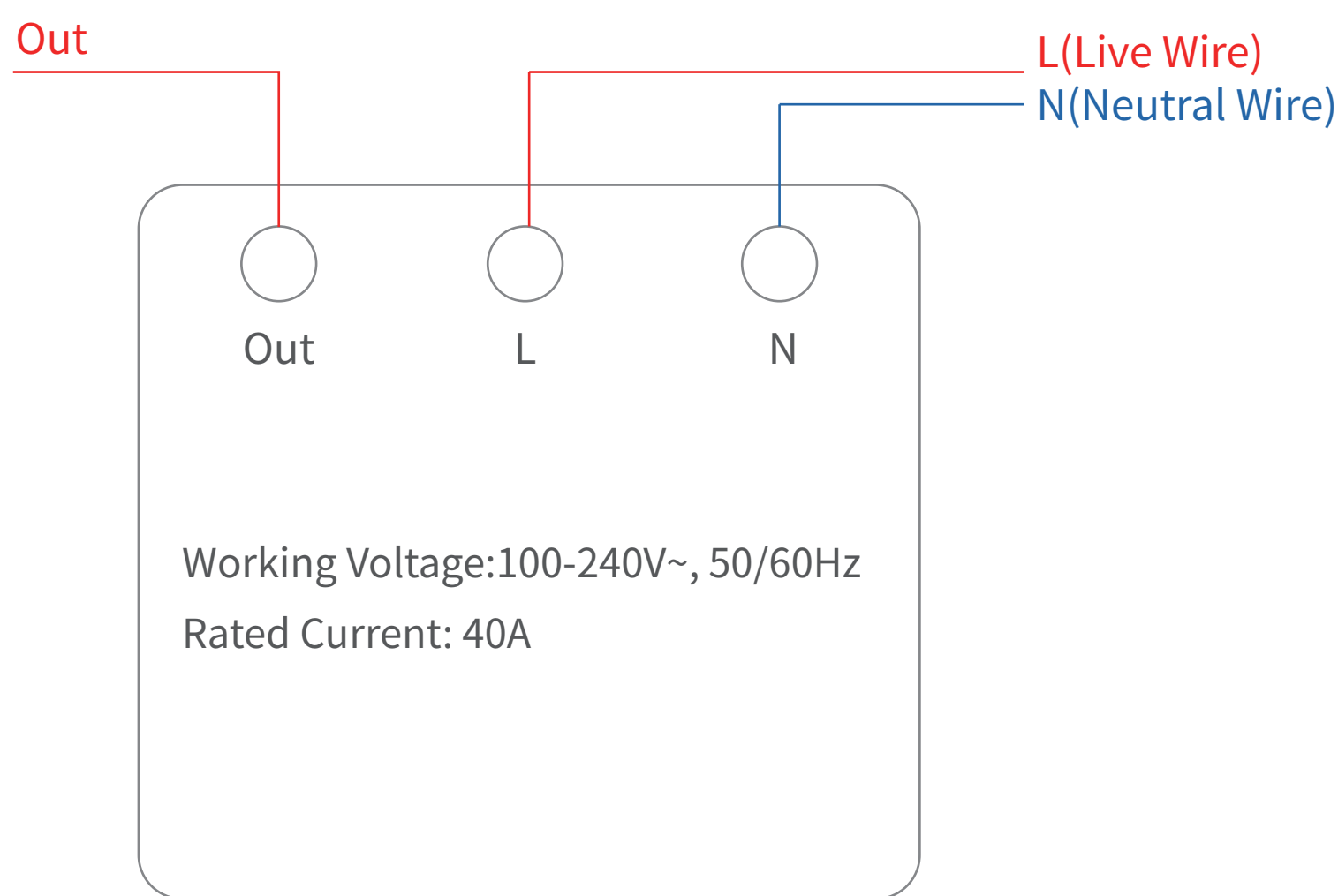
Enables light-on without card when motion is detected. When motion is detected, power is activated, the light turns on, and a welcome message is broadcast. When no motion is detected, power is cut off.

4.Factory Reset

Follow step 2 to enter BLE Mesh Provision mode, then long-press until the device restarts for factory reset. (Factory reset requires no configuration lock; if locked, unlock via the app first.)



Wiring Instructions



FCC Caution:

This device complies with part 15 of the FCC Rules. Operation is subject to the following two conditions: (1) This device may not cause harmful interference, and (2) this device must accept any interference received, including interference that may cause undesired operation. Any changes or modifications not expressly approved by the party responsible for compliance could void the user's authority to operate the equipment.

NOTE: This equipment has been tested and found to comply with the limits for a Class B digital device, pursuant to Part 15 of the FCC Rules . These limits are designed to provide reasonable protection against harmful interference in a residential installation. This equipment generates, uses and can radiate radio frequency energy and, if not installed and used in accordance with the instructions, may cause harmful interference to radio communications. However, there is no guarantee that interference will not occur in a particular installation. If this equipment does cause harmful interference to radio or television reception, which can be determined by turning the equipment off and on, the user is encouraged to try to correct the interference by one or more of the following measures:

- Reorient or relocate the receiving antenna.
- Increase the separation between the equipment and receiver.
- Connect the equipment into an outlet on a circuit different from that to which the receiver is connected.
- Consult the dealer or an experienced radio/TV technician for help.

The device has been evaluated to meet general RF exposure requirement. The device can be used in portable exposure condition without restriction.