

设计说明

材质: 105g铜版纸 (单色印刷)

尺寸: 105x148MM(折页)

FCC Caution:

This device complies with part 15 of the FCC Rules. Operation is subject to the following two conditions: (1) This device may not cause harmful interference, and (2) this device must accept any interference received, including interference that may cause undesired operation.

Any changes or modifications not expressly approved by the party responsible for compliance could void the user's authority to operate the equipment.

NOTE: This equipment has been tested and found to comply with the limits for a Class B digital device, pursuant to Part 15 of the FCC Rules. These limits are designed to provide reasonable protection against harmful interference in a residential installation. This equipment generates, uses and can radiate radio frequency energy and, if not installed and used in accordance with the instructions, may cause harmful interference to radio communications. However, there is no guarantee that interference will not occur in a particular installation.If this equipment does cause harmful interference to radio or television reception,

which can be determined by turning the equipment off and on, the user is encouraged to try to correct the interference by one or more of the following measures:

- Reorient or relocate the receiving antenna.
- Increase the separation between the equipment and receiver.
- Connect the equipment into an outlet on a circuit different from that to which the receiver is connected.
- Consult the dealer or an experienced radio/TV technician for help.

The device has been evaluated to meet general RF exposure requirement. The device can be used in portable exposure condition without restriction.

TONTRU

T101

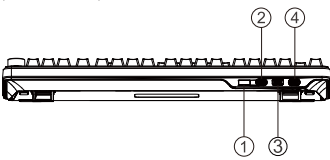
Mechanical Keyboard

«« User Manual »»

English

Basic parameters

Product model: T101
Bluetooth name: TONTRU Keyboard 3.0/TONT
RU Keyboard 5.0
Battery parameters: 3.7V 8000mAH (does
not support fast charging! Please connect to a
computer for charging)
Input: DC 5V±1A
Connection modes: wired connection,
Bluetooth connection (5.0), 2.4G connection
Wireless version: 2.4G BLE 5.0
Wireless connection distance: 10 meters (in
unobstructed open environments)
Charging port: Type-C
Support system: Windows- MacOS
Product size: 410mm * 144mm * 42mm
Manual measurement of relevant parameters.
In case of any discrepancies, the actual
product shall prevail



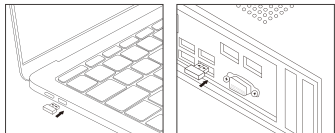
1.2.4G receiver placement hole

2.2.4G/USB/BT

3. Type-C interface

4.WIN/MAC

2.4G connection



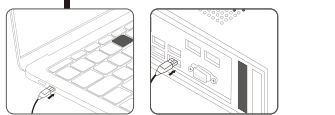
After switching to 2.4G mode,long press FN+R
and hold the combi-nation key for 3 seconds
to enter 2.4G pairing mode. After successful
pairing, the mode light will turn off. After 2
minutes of inactivity, the pairing device will
not be found ,the keyboard will enter sleep
mode.Press any key to wake up (for after-sales
second-ary pairing)

Bluetooth connectivity



After switching to Bluetooth mode,long press
FN+Q/W/E to enter Bluetooth pairing mode,
corresponding to Bluetooth channels 1/2/3,
with blue/yellow/white indicator lights. Short
press to switch channels. If the connection is
not successful, there will be no operation for
2 minutes before the keyboard enters sleep
mode. Press any key to wake up.

Wired connection



Turn the switch to the wired mode and insert
the USB data cable to establish a wired
connection.

Power saving sleep state

After 2 minutes of inactivity on the keyboard,
the backlight will turn off. Press any key to
wake up (the driver can adjust the sleep
time)

Deep sleep state

Keyboard inactivity for 30 minutes. The
keyboard enters deep sleep mode. Bluetooth
is disconnected, press any key to wake up
the back and Bluetooth is reconnected.

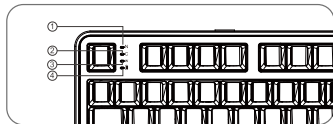
Product indicator light

1. NUM indicator light
Press the NUM key indicator light to turn on
the numeric keypad area function, then
press the NUM key indicator light to turn
off the numeric keypad function.

2. Caps lock indicator light
Press the Caps lock key to turn on the
uppercase indicator light, then press the
Capslock key to turn off the indicator light
and return to lowercase.

3. WIN key indicator light
Press the FN+WIN button and the indicator
light will remain on, indicating that the win is
locked. Press the unlock button again to
restore normal operation. (with memory
function, the MAC system does not support
the WIN lock key function)

4. Charging indicator light
The red light flashes slowly at low voltage,
stays on during charging, and turns off when
fully charged.Power indicator: Display in
primary key area 1-0



Multimedia combination key (WIN)

Combination button	function
Fn+Esc	Long press for 3 seconds to restore factory settings
Fn+F1	Screen brightness-
Fn+F2	Screen brightness+
FN+F3	Task View
FN+F4	Application switching
FN+F5	Emoji
FN+F6	Screenshot
FN+F7	Previous song
FN+F8	Play/Pause
FN+F9	Next song
FN+F10	Search
FN+F11	Input method switching
FN+F12	Return to desktop

Multimedia combination key (MAC)

Combination button	function
Fn+Esc	Long press for 3 seconds to restore factory settings
F1	Screen brightness-
F2	Screen brightness+
F3	Task Center
F4	Application switching
F5	Emoji
F6	Screenshot
F7	Previous song
F8	Play/Pause
F9	Next song
F10	Search
F11	Input method switching
F12	Return to desktop

Multimedia combination key (WIN/MAC)

Combination button	function
Fn+BackSpace	Check battery level
Fn+	Main backlight effect switching
Fn+Enter	Main backlight color switching
Fn+X	Keyboard light switch
Fn+↑	Main backlight brightness+
Fn+↓	Main backlight brightness-
Fn+←	Main backlight speed-
Fn+→	Main backlight speed+
FN+11	Enter custom game mode

List of Items

- A. Type-C connection cable
- B. 2.4G receive
- C. Instruction manual
- D. Three axes
- E. Dust cover
- F. Pulling shaft and key puller